



DRIPLESS[®]
YELLOW. IT WORKS

DRIPLESS, Inc.
1.800.960.1773 tel
1.707.568.5081 tel
1.707.568.5085 fax
www.dripless.com

PRODUCT CATALOG

INDEX



Ergo Tech Series -	Page 3
Consumer Grade -	Page 6
Contractor Grade -	Page 7
High Ratio/Performance Tools -	Page 8
Bulk Load/Sausage Pack Tools -	Page 9
Dual Component Tools -	Page 10
Accessories and Sundry Items -	Page 12
Terms and Specifications -	Page 15



ERGONOMIC TECHNOLOGY SERIES INTRODUCTION

Engineered for lightweight durability and ergonomically designed to reduce jobsite fatigue.



ERGO TECH SERIES FEATURES

- Models for every job
- Drip/Dripless option
- Super strong rod and drive mechanism for long life
- Engineered ergonomic triggers
- Rotating barrel
- Rugged composite construction
- Sharp precision cutter
- Extra long clean out

**Tough,
Durable and
Rugged.**

**We put our
guns to the test !**



YELLOW. IT WORKS.

ERGONOMIC TECHNOLOGY SERIES MODELS



ETS1000, 10 oz. **Consumer Grade** - 12:1 ratio

Full time dripless feature
Compact grip for the slightly smaller hand.
[upc: 7 64509 01110 2](#)



ETS 2000, 10 oz. **Professional Grade** - 12:1 ratio

40% lighter than comparable models
Rotating barrel
Full time dripless feature
High quality peened rod
Powder metal drive dog
[upc: 7 64509 01002 0](#)



ETS 3000, 10 oz. **Industrial Grade** - 18:1 ratio

Drip/No Drip option
Rotating barrel
High quality peened rod
Powder metal drive dog
[upc: 7 64509 01003 7](#)



ETS 5000, 29 oz. **Industrial Grade** - 18:1 ratio

Drip/No Drip option
Rotating barrel
High quality peened rod
Powder metal drive dog
[upc: 7 64509 01005 1](#)



ETS6000, 10 or 20 oz. **Professional Grade Sausage Pack Caulker** - 18:1 ratio

2 1/8" diameter rotating barrel
Easy release front cap, Drip/No Drip option
Adaptable to standard 10 oz cartridge
Comes with 6 nozzels in 2 sizes
High ratio applicator suitable for high viscosity products
[upc: 7 64509 01006 8](#)

YELLOW. IT WORKS.

SPECIAL FEATURES

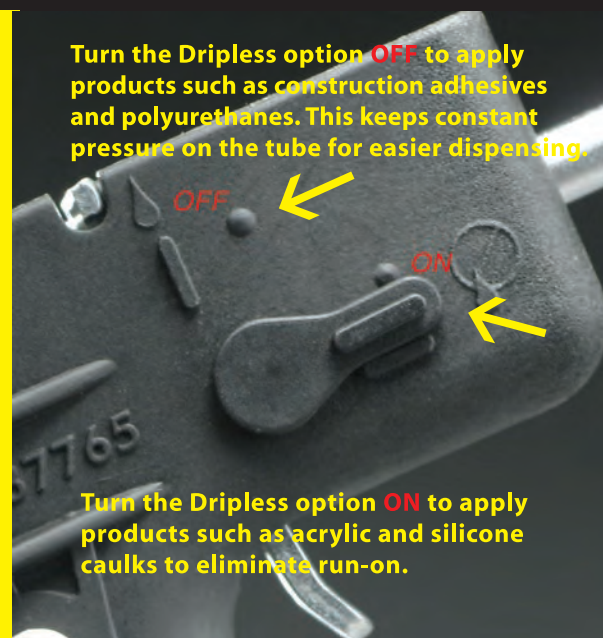
Designed for the professional, ERGO/TECH guns address weight, balance and hand fatigue while applying caulk and sealants.



WHEN TO USE THE DRIP/NO DRIP OPTION SWITCH

Turn the Dripless option **OFF** to apply products such as construction adhesives and polyurethanes. This keeps constant pressure on the tube for easier dispensing.

Turn the Dripless option **ON** to apply products such as acrylic and silicone caulks to eliminate run-on.



YELLOW. IT WORKS.

CONSUMER GRADE

Occasional to light daily recommended usage.
Not recommended for highly viscous products.



C100, 10 oz. Economy Round-Rod
5:1 ratio
Ladder Hook,
[upc: 7 64509 01100 3](#)



C150, 10 oz. Economy Round-Rod
5:1 ratio
Ladder Hook,
Seal Punch
Cutter
[upc: 7 64509 01150 8](#)



CR175, 10 oz. Economy Ratchet Drive
6:1 ratio
Ladder Hook,
Seal Punch
Cutter
[upc: 7 64509 01175 1](#)



ETS1000, 10 oz. Consumer Grade
12:1 ratio
Compact Grip for the slightly
smaller hand.
[upc: 7 64509 01110 2](#)

CONTRACTOR GRADE

Professional quality designed for daily use,
suitable for most caulks and sealants



CR200, 10 oz. Contractor-Grade Cradle Ratchet Rod
CR400, 29 oz. Contractor-Grade Cradle Ratchet Rod
10:1 ratio

Full time dripless feature
Lightweight redesigned body
Sharp blade cutter
Ladder Hook
Seal Punch and Cutter

upc: 7 64509 01220 8 (CR200)

upc: 7 64509 01420 2 (CR400)



CH200, 10 oz. Contractor-Grade Cradle Hex-Rod
10:1 ratio

Cradle Hex-Rod
Contractor's #1 Choice
Ladder Hook
Seal Punch and Cutter

upc: 7 64509 01200 0



SH200, 10 oz. Contractor-Grade Skeleton Frame Hex-Rod
10:1 ratio

Open Frame Hex-Rod
Cut away front cap for easy loading
Compact design for the tool box
Ladder Hook, Seal Punch and Cutter

upc: 7 64509 01210 9



SH111, 10 oz. Contractor-Grade Enhanced Power Skeleton Frame
12:1 ratio

Enhanced Power Open Frame Hex-Rod
Ladder Hook, Seal Punch and Cutter

upc: 7 64509 01215 4

HIGH RATIO/HIGH PERFORMANCE

Industrial quality recommended for heavy-duty use

Powerfully built in 10 oz. and quart size for high viscosity products



SI300, 10 oz. Industrial High Performance
SI500, 29 oz. Industrial High Performance

16:1 ratio

Rotating Barrel

Drip/No Drip Option for bead control

Ladder Hook, Seal Punch

and Extra-Sharp Cutter

upc: 7 64509 01300 7 (SI300)

upc: 7 64509 01450 6 (SI500)



HR300, 10 oz. High Ratio Specialty

26:1 ratio,

360 degrees rotary type carriage

Double steel gripper plates

5.5mm travel distance

Adjustable screw to cut thrust gaps

Built in puncture tool

Metal push disc

upc: 7 64509 02300 6



HR900, 29 oz. High Ratio Specialty

26:1 ratio,

360 degrees rotary type carriage

Double steel gripper plates

5.5mm travel distance

Adjustable screw to cut thrust gaps

Built in puncture tool

Metal push disc

upc: 7 64509 02990 9

YELLOW. IT WORKS.

BULK LOADER/SAUSAGE TOOL

Heavy-duty, high ratio tools for thick product application.
Bulk loaders and sausage pack tools built to last with top quality construction.



PS600 20 oz. Sausage Pack Caulker

2 1/8" diameter anodized aluminum barrel
Neoprene Plunger, Contoured Handle
and Trigger Mechanism
Comes with 6 - NO8 nozzles (2 sizes)
(replacement nozzles available)
[upc: 7 64509 01600 8](#)



BL6500 15 oz. Ergonomic Bulk Load Dispenser **BL7500 30 oz. Ergonomic Bulk Load Dispenser**

18:1 ratio
Double seal system achieves maximum fill
Easy on/off front cap design
Load/Dispense switch
Comes with 6 nozzles (2 sizes)
Works with 5 gallon follow plate, item #FP5
[upc: 7 64509 06501 3 \(BL6500\)](#)
[upc: 7 64509 07501 2 \(BL7500\)](#)



ETS6000 10 or 20 oz. Sausage Pack Caulker

18:1 ratio
2 1/8" diameter rotating barrel
Specially hardened rod
Quick release caps
Comes with 6 disposable nozzles
Drip/No Drip option

*Professional quality recommended for
heavy-duty usage.*

*Higher ratio for reduced hand fatigue;
suitable for higher viscosity products.*

[upc: 7 64509 01006 8](#)

DUAL COMPONENT

Super tough construction for long life in multi-component application situations.
Popular configurations for many specialty products.



DC 200, 6.5 oz. Dual Component 1:1 or 2:1
26:1 ratio
5.5 mm travel distance
Aluminum handle
Composite push disc
Top-bottom rods design
Two steel gripper plates
Adjustable screw to cut thrust gaps
upc: 7 64509 02200 9



DC 600 22 oz. Dual Component 1:1 or 2:1
26:1 ratio
3.5 mm travel distance
Aluminum handle
Metal push disc
Two steel gripper plates
Adjustable screw to cut thrust gaps.
upc: 7 64509 02600 7



DC 900 28 oz and 30 oz Dual Component
26:1 ratio
2:1 or 10:1 capacity 30 oz
3.5 mm travel distance
Aluminum handle
Metal push disc
Two steel gripper plates
Adjustable screw to cut thrust gaps.
upc: 7 64509 02900 8

DUAL COMPONENT



DC 1500 Dual Component

50 oz. Capacity

26:1 ratio

Aluminum trigger, metal cage and handle

Double steel gripper plates

3.5 mm travel distance

Adjustable screw to cut thrust gaps

Aluminum push disc

upc: 7 64509 02150 7



DC 200L Multi Component

1:1, 2:1 or 10 oz. single cartridge

10 oz. Capacity

26:1 ratio

Double steel gripper plates

5.5mm travel distance

Adjustable screw to cut thrust gaps

Patented holder for top rod

Plastic push disc

Built in puncture tool

Adjustable plastic cartridge grips on cage

upc: 7 64509 02100 2

THE PAINT DAWG FAMILY

Multiliner Paint Buckets in three convenient sizes

Scoot over Rover,
there's another "man's best friend" on the job site

the paint dawg



With **24** polyethylene liners (.7 ml) pre-packed inside every bucket. The liners are form fitting and peel out one after another providing a **clean bucket in seconds.**

Three sizes: 5 Quart, 2 Gallon and 5 Gallon.
Can be used with spray equipment, eliminates clean up.
Bucket Cap preserves paint up to 10 days.

QUICK and EASY, saves time and money while going Green.

pour



work



separate



lift out



preserve



Meets EPA guidelines for safe paint disposal.

YELLOW. IT WORKS.

ACCESSORIES



Paintdawg Buckets in 3 convenient sizes

PD-50: The Big Dawg
5 gallon multi-liner bucket
upc: 7 64509 01550 6

PD-20: The Paint Dawg
2 gallon multi-liner bucket
upc: 7 64509 01020 4

PD-01: The Paint Pup
5 quart multi-liner bucket
upc: 7 64509 01001 3



Bucket Grid

Simply turn 90 degrees for either a 5 gallon or 2 gallon bucket

It's EZ Fit: Simply turn 90 degrees to snap onto either a 5 gallon or 2 gallon bucket

It's EZ Roll: Beveled edges eliminate your roller catching on the grid's bottom edge

It's EZ Clean: The polypropylene material resists paint sticking.

upc: 7 64509 01310 6



Giant Utility Spatula, GPS90

14" handle
6" x 4.5" paddle
for use with
5 and 55 gallon
containers

upc: 7 64509 01550 6

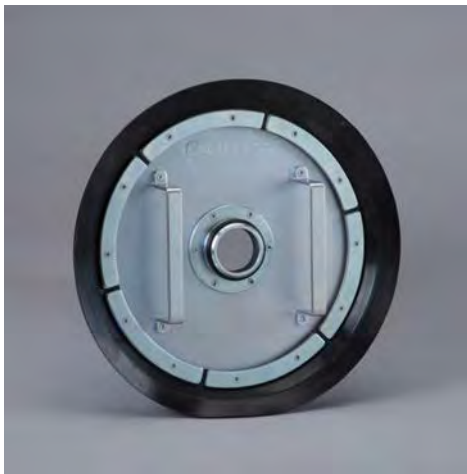


Mini-Spatula, MPS95

4" x 2.5" paddle
fits on the end of any
standard size paint
stick. Use with all
gallon, quart and
pint size containers

upc: 7 64509 01095 2

NOZZLES AND REPLACEMENT PARTS



**Follow Plate for:
BL6500
and
BL7500**

FP-5 upc: 7 64509 05000 2

Designed to simplify loading the BL6500 and BL7500 from a 5 gallon bucket. Sturdy edge minimizes left-over waste. Built-in handles make removal quick and easy. Smooth surfaces for easy clean up - no rivets to trap material. Made of steel for strength and long life.



**Nozzles for
sausage and bulk load tools**

N09-L upc: 7 64509 06002 5

N09-LW upc: 7 64509 06003 2

N08 upc: 7 64509 01060 0

YELLOW. IT WORKS.

DRIPLESS, INC.

QUALITY. INNOVATION. SERVICE.

TERMS AND CONDITIONS

Prices are subject to change without notice.

Standard drop ship prepaid with minimum order of three cases. Orders outside the continental U.S. and under minimum will be quoted FOB. Contact your sales representative for details.

Dripless, Inc. stands behind its product and shipping logistics but damage and shortages sometimes occur. Please report any discrepancies as soon as possible.

For damage over reasonable amounts (more than 2%) please submit a detailed report, with pictures if possible especially for freight shipped by common carrier.

Delinquent bills may be subject to a 1.5% monthly finance charge.

There is a restocking fee of 15%. Freight on returned product will be paid by the customer. Refunds will be made on returns in original condition only.

Dripless, Inc. is open to any feedback which will help us better serve our customers.

SPECIFICATIONS

SIZE	ITEM#	UPC	COUNT	CASE UPC	ITEM#	UPC	COUNT	CASE UPC
10oz	C100	7 64509 01100 3	12	1 07 64509 01100 0	10 oz C050	7 64509 01050 1	12	1 07 64509 01050 8
10 oz	C150	7 64509 01150 8	12	1 07 64509 01150 5	10 oz R1101	7 64509 01101 0	12	1 07 64509 01101 7
10 oz	CR175	7 64509 01175 1	12	1 07 64509 01175 8	PD01	7 64509 01001 3	20	3 07 64509 01001 4
10 oz	CH200	7 64509 01200 0	12	1 07 64509 01200 7	PD20	7 64509 01020 4	20	3 07 64509 01020 5
10 oz	CR200	7 64509 01220 8	12	1 07 64509 01220 5	PD50	7 64509 01550 6	10	3 07 64509 01550 3
29 oz	CR400	7 64509 01420 2	12	1 07 64509 01420 9	MPS95	7 64509 01095 2	50	1 07 64509 01095 9
10 oz	SH200	7 64509 01210 9	12	1 07 64509 01210 6	GPS90	7 64509 01090 7	12	1 07 64509 01090 4
10 oz	SH111	7 64509 01215 4	12	1 07 64509 01215 1	PG52	764509013106	12	1 076450901310 3
10 oz	SI300	7 64509 01300 7	6	1 07 64509 01300 4	FP5	7 64509 05000 2	1	
29 oz	SI500	7 64509 01450 6	6	1 07 64509 01450 6				
10 oz	ETS1000	7 64509 01110 2	12	1 07 64509 01110 9				
10 oz	ETS2000	7 64509 01002 0	6	1 07 64509 01002 7				
10 oz	ETS3000	7 64509 01003 7	6	1 07 64509 01003 4				
29 oz	ETS5000	7 64509 01005 1	6	1 07 64509 01005 8				
sausage	PS600	7 64509 01600 8	1	1 07 64509 01600 2				
sausage	ETS6000	7 64509 01006 8	6	1 07 64509 01006 5				
15 oz	BL6500	7 64509 06501 3	1	1 07 64509 06501 7				
30 oz	BL7500	7 64509 07501 2	1	1 07 64509 07501 6				
29 oz	HR900	7 64509 02990 9	6	1 07 64509 02990 6				
10 oz	HR300	7 64509 02300 6	12	1 07 64509 02300 3				
200 ml	D200	7 64509 02200 9	1	1 07 64509 02200 6				
600 ml	D600	7 64509 02600 7	1	1 07 64509 02600 4				
900 ml	D900	7 64509 02900 8	1	1 07 64509 02900 5				
1500 ml	D1500	7 64509 02150 7	1	1 07 64509 02150 4				
300 ml	D200L	7 64509 02100 2	1	1 07 64509 02100 9				

ITEM#	UPC	CASE PACK
N09-L Nozzle	7 64509 06002 5	6
N09-LW Nozzle	7 64509 06003 2	6
N08 Nozzle	7 64509 01060 0	6
Front cap ring for ETS6000	7 64509 06001 8	1
Rear cap ring for ETS6000, BL	7 64509 06004 9	1
Front/rear cap ring for PS600	7 64509 01061 7	1
Front cap ring for BL6500/7500	7 64509 06006 3	1
BL6500/BL7500 chinking plate	7 64509 06015 5	1
BL6500/BL7500 seal assembly kit	7 64509 06020 9	1
PS600/ETS6000 pusher plate	7 64509 06025 4	1

DRIPLESS, INC.

QUALITY.

INNOVATION.

SERVICE.

At Dripless, Inc our mission is making quality tools that are strong, reliable, useful, and long lasting.

We start with quality engineering and manufacturing, follow up with constant innovation, and seal the deal with over-the-top customer service.

We take our time.

We listen to our customers.

From the re-designed standard metal caulk guns, through our state-of-the-art

ETS composite models

to the new line of

exclusive industrial tools, you cannot

find a better product on the shelf.

FLAT OUT
the best tool
you'll ever own.

Fully guaranteed
or your money back.....Well, most of the time.

Dripless, Inc. / Santa Rosa, CA / www.dripless.com / 707-568-5081



If it's not yellow, it's not Dripless