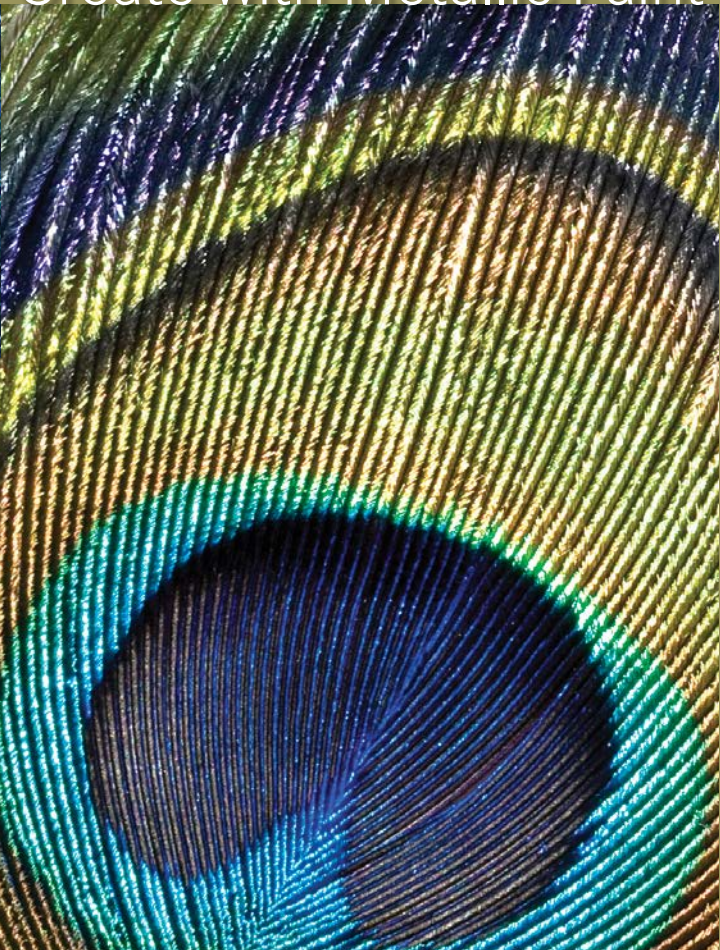




shimmer
Create with Metallic Paint



Metallic Paint
COLLECTION™

The Color Palette is only Limited by Your Imagination



Finding a color that suits your project has never been easier. A wide variety of standard pre-mixed colors are available as well as our exclusive custom color matching service to the trade.

All standard metallic colors are inter-mixable for creating one-of-a-kind custom colors and allowing for on-site color modification.

PERFECT FOR:

Hospitality • Commercial/Retail • Residential
Corporate Offices • Casinos • Theme Parks

The First Choice in Water Base Metallic Paint

When it comes to choosing a metallic paint for a do-it-yourself project, high-end decorative finish or large architectural specification, Modern Masters Metallic Paint Collection™ has you covered! Our focus on metallic finishes and unique chemistry has made us the world leader in water base metallic paints. Our Metallic Paint Collection products are available in over 4,000 paint retailers in 25 countries around the world. To find a dealer nearest you and to obtain product information and specifications, go to modernmasters.com

Leadership in Energy and Environmental Design (LEED®)

Buildings fundamentally impact people's lives and the health of the planet. Since the LEED Green Building Rating System for New Construction was first published in 1999, it has been helping professionals across the country to improve the quality of our buildings and their impact on the environment.

Metallic Paint Collection™

LEED® EQ Credit 4.2 - Low-emitting non-flat paints



Unique, Water Base, Non-Tarnishing Colors

Real metal particles, pearlescent pigments and traditional color pigments are uniquely combined to create a palette of beautiful, non-tarnishing, shimmering colors. If an oxidized metal finish is desired, use *Metal Effects*.



Extender for Rolling (ME651)

When added to Metallic Paint Collection paints, extends the open time or 'wet-edge' of the paint. This added open time allows for 'back-rolling' as a last step to properly orient the metallic particles and eliminate seams. Can also be used to transform Metallic Paint

Collection Paints into translucent glazes for decorative paint applications. Available in 4 ounce, pint and gallon sizes.



MasterClear® Protective Clear Topcoats

This interior/exterior topcoat, available in Satin and Semi-Gloss sheens, is a water base, one part, self-crosslinking, aliphatic polyurethane/acrylic, non-yellowing

topcoat. Formulated to create the best possible protection for Metallic Paint Collection paints without affecting the metallic shimmer. Not intended for use with Matte Metallic Paints. Available in quart and gallon sizes.



Matte Metallic Paint

Water Base, Non-Tarnishing, Interior Only

Matte Metallic Paints are formulated with the same shimmering particles and ease of application as our standard Metallic Paint

Collection with a new twist, no sheen! They are beautiful on their own, however when used together with their higher sheen counterparts to create a finish, the results are phenomenal. Available in 15 of the most popular metallic paint colors. For interior use only.



9" Metallic Paint Roller (ME652)

This roller is specially designed for the application of the Metallic Paint Collection paints. The roller's unique, high-quality, European fabric and beveled ends work to create a uniform silk-like finish.



Sea Sponge Roller (SS1030)

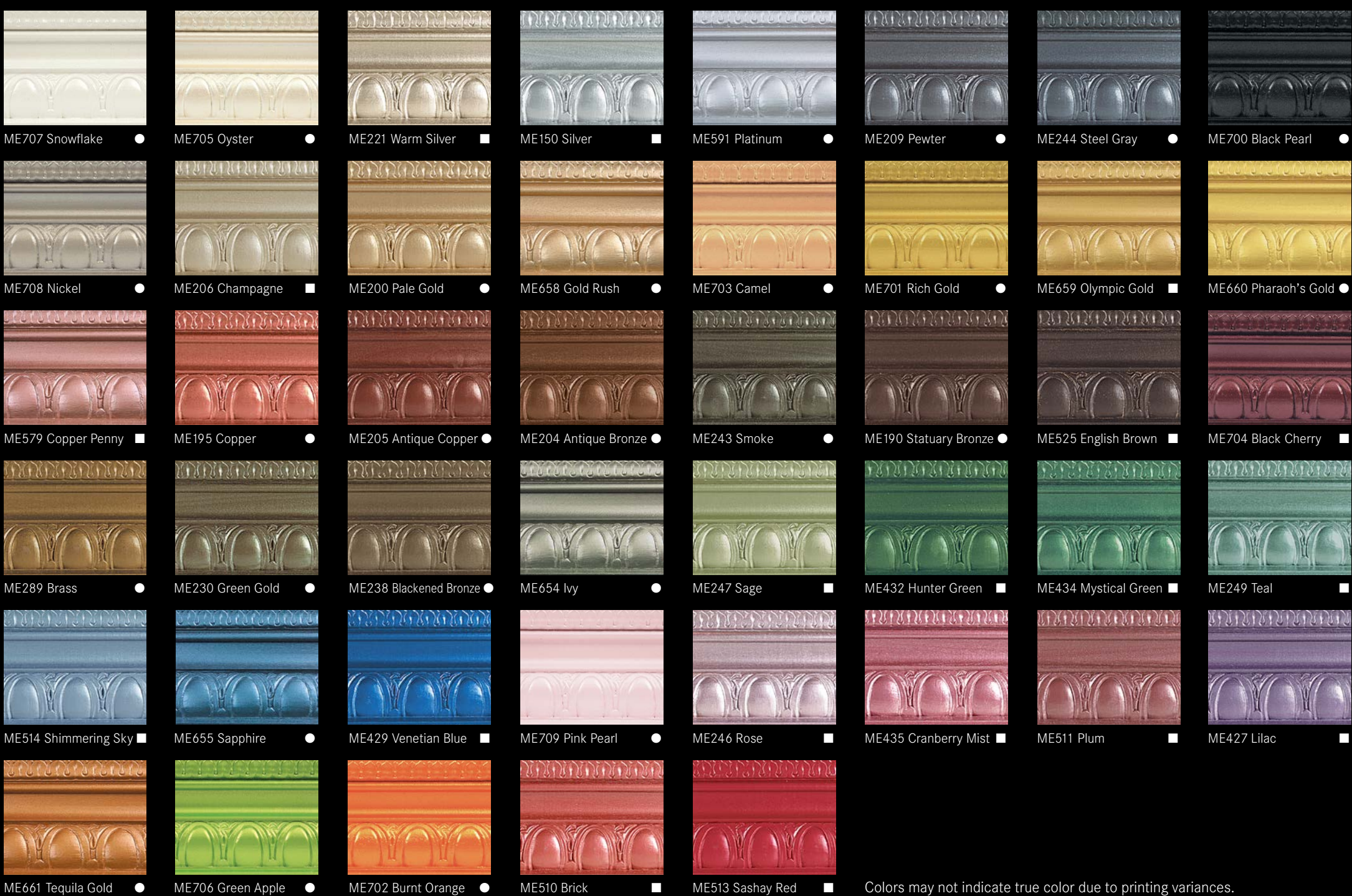
This 6" natural sea sponge roller creates a simple and quick decorative finish.



Metallic Paint Collection Color Card

To fully appreciate the full range of metallic colors you need to view the actual product. It's easy to order a Metallic Paint Collection Color Card, just call 1-800-942-3166 or go to modernmasters.com.

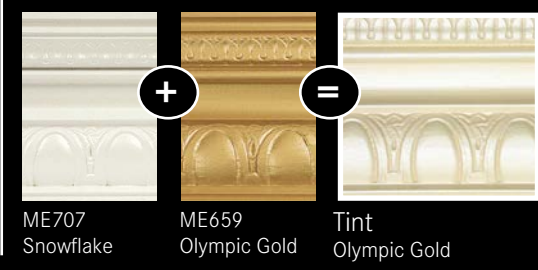
Standard Pre-Mixed Water Base Metallic Colors



Colors may not indicate true color due to printing variances.

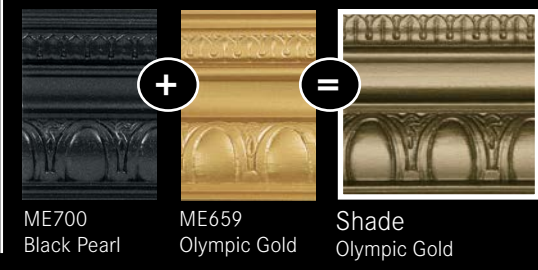
Tints

Tints can be made by mixing 90% of Snowflake (ME707) + 10% of any standard pre-mixed metallic color.

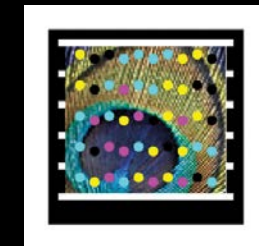


Shades

Shades can be made by mixing 50% of Black Pearl (ME700) + 50% of any standard pre-mixed metallic color.



All standard metallic colors are inter-mixable allowing for on-site color modification and creating one-of-a-kind custom colors. A tint or shade color can be ordered pre-mixed with a minimum order of 5 gallons.



View the Metallic Paint Collection How-To Video

Get the free mobile app at <http://gettag.mobi>

Standard Pre-Mixed Water Base Matte Metallic Colors



Sheers



Coverage Characteristics

Colors in the Metallic Paint Collection contain three levels of coverage/hide: Opaque, Semi-Opaque and Sheer. Opaque colors have excellent hide; two coats are recommended for best results. Semi-Opaque colors have good hide; three coats are recommended for best results. Sheer colors are translucent overcoats that give luster to traditional paints, other Metallic Paint colors or faux and broken color finishes. Check the label on the container for the coverage level. Metallic Paint covers approximately 320-400 sq. ft./gallon. Available in 6 ounce, quart and gallon sizes.

- Opaque - 2 coats for coverage
- Semi-opaque - 3 coats for coverage
- ◆ Sheer - translucent overcoat



The Alternative to Ordinary



Visit modernmasters.com
for more information on our Metallic Paints,
Architectural Textures, Theme Paint,
Blacklight Paints, Glazes, Varnishes and Crackles.

For information on Modern Masters Training Centers
and how to purchase products, call (800) 942-3166
or visit modernmasters.com



9380 San Fernando Rd. Sun Valley, CA 91352 USA
(800) 942-3166 • (818) 683-0201

modernmasters.com

An **RPM** Company

© 2013, Modern Masters Inc.

We are committed to using Eco Friendly processes.
This brochure is printed on recycled paper with environmentally safe inks.