

2015

# TOOL CATALOG



- |                |                         |              |
|----------------|-------------------------|--------------|
| • Bridgton     | 116 Portland Road       | 647-8333     |
| • Brunswick    | 158 Church Road         | 725-5547     |
| • Damariscotta | 326 Main Street         | 563-3181     |
| • Kennebunk    | 95 York Street          | 985-6565     |
| • North Conway | 2451 White Mountain Hwy | 603-356-6689 |
| • Windham      | 403 Roosevelt Trail     | 892-6711     |
| • Yarmouth     | 258 Main Street         | 846-5555     |

For more information & pricing on in-stock items, visit [HancockLumber.com/ShopNow](http://HancockLumber.com/ShopNow)



# Get to the **POINT.**

# 80% Smaller Nose\*



**BOSTITCH introduces a line of finish nailers with Smart Point™ technology, providing precision and accuracy.**

Smart Point™ nailers feature smaller noses\* and eliminate the need to compress the contact trip to actuate the tools, reducing work surface damage and the risk of pushing the material out of position.



**18 GA Brad Nailer**  
BTFP12233



**16 GA Finish Nailer**  
BTFP71917



**15 GA "FN" Style Finish Nailer**  
BTFP72156  
or  
**15 GA "DA" Style Finish Nailer**  
BTFP72155

Visit us online for  
more information:



[WWW.BOSTITCH.COM/SMART-POINT-NAILERS](http://WWW.BOSTITCH.COM/SMART-POINT-NAILERS)



**DESIGNED FOR THE PROFESSIONAL  
BUILT TO LAST™**

# **BOSTITCH®**

# Index

<b>Pneumatic Tools</b>	<b>Pg</b>	<b>Table Saws</b>	<b>37</b>
Framing	1	Table Saw Comparison Chart	38
Roofing & Siding	3	Table Saw Accesories	38
Construction Staplers	4	Miter Saws	39
Specialty Tools	4	Miter Saw Comparison Chart	40
Finish Nailers	6	Miter Saw Accessories	40
Compressors	8	Band Saw	41
Combo Kits	9	Scroll Saw	41
		Cut Out Tools	41
<b>Power Tools</b>		Tile Saw	41
Circular Saws	10	Chop Saw	41
Circular Saw Comparison Chart	12	Cement Shears	42
Pro's Choice Blades	12	Metal Shears	42
Jig Saws	13	PVC Shears	42
Jig Saw Accessories	14		
Recip Saws	14	<b>Hand Tools</b>	<b>42</b>
Recip Saw Accessories	17		
Corded Drills	17	<b>Mark &amp; Measure</b>	<b>43</b>
Corded Impact Wrenches	18		
Corded Hammer Drills	19	<b>Jobsite Clean Up</b>	<b>44</b>
Right Angle Drills	20		
Corded Drywall Screwdrivers	20	<b>Pressure Washers</b>	<b>45</b>
Screwdrivers/Collated Screwdrivers	21	Pressure Washer Accessories	45
Cordless Drills	21		
Cordless Hammer Drills	24	<b>Generators</b>	<b>46</b>
Cordless Impact Drivers	26		
Cordless Impact Wrenches	27	<b>Safety</b>	
Cordless Screwdrivers	28	Ear Protection	46
Rotary Tools	28	Head Protection	46
Cordless Right Angle Drill	28	Eye Protection	46
Cordless Tool Combo Kits	29	Fall Protection	47
Oscillating Multi Tools	30	Respirators	47
Routers	31	Knee Pads	47
Router Kits	31		
Trim Routers	31	<b>Ladders</b>	
Hand Planers	32	Fiberglass Step Ladders	48
Planers	32	Fiberglass & Alum Extension Ladders	48
Plate Joiners	32		
Sanders/Polishers	32	<b>Storage</b>	
Spindle Sander	32	Organizers	48
Angle Grinders	33	Hard-Sided Storage	49
Bench Grinder	34	Soft-Sided Storage	49
Benchtop Sanders	34	Dewalt TSTAK System (Stackable)	49
Disc Sanders	34	Dewalt TOUGH System (Stackable)	50
Belt Sanders	34	Tool Hooks	50
Finish Sanders	35	Aprons & Belts	50
Random Orbit Sanders	35		

**BOSTITCH**



## F28WW WIRE COLLATED FRAMING NAILER

• Tool Weight :7.6 lbs • Fastener range: 2" to 3 1/2" 28° wire collated stick framing nails, from .113" to .131" in diameter • **Sku:**3551547



**BOSTITCH**

## LPF28WW BOSTITCH LOW PROFILE FRAMING NAILER

• Tool Weight : 7.6 lbs • Fastener range: 2" to 3 1/4" 28° wire collated stick framing nails, from .113" to .131" in diameter • **Sku:**3554198



**HITACHI**

## NR90AF 28-DEGREE WIRE-WELD FRAMING NAILER

• Tool Weight : 7.3 lbs • Powerful performance driving 2" to 3-1/2" fasteners into engineered lumber • **Sku:**1454307



**BOSTITCH**



## GF28WW CORDLESS WIRE WELD FRAMING NAILER

• Tool Weight: 8.3 lbs. • Drives 28° wire-weld nails, full range 2" to 3-1/2" fasteners • **Sku:**3553558

**Includes:** battery, battery charger, safety glasses and carrying case



## F-350S POWERMASTER PLUS FRAMING NAILER

• Tool Weight: 8.4 lbs • Nail range: 30° angle from 2" to 3 1/2" in length, .113" to .131" shank diameters • **Sku:**1172867

**BOSTITCH**



## F33PT PAPER COLLATED FRAMING SYSTEM

• Tool Weight: 7.9lbs • **Sku:**3551539

**HITACHI**



## NR90ADPR 3-1/2" CLIPPED HEAD FRAMING STRIP NAILER W/DEPTH ADJ - PAPER COLLATION

• Tool Weight: 7 lbs • Fastener length: 2" to 3-1/2" • **Sku:**1448030

**Paslode**



## 902600 CF-325 LI-ION CORDLESS FRAMING NAILER

• Tool Weight: 7.25 lbs • Fastener range: 30-degree paper tape collated framing nails from 2" to 3 1/4" in length, .113" to .131" shank diameters • **Sku:**0180009

**Includes:** Includes: battery, battery charger, safety glasses and carrying case



**BOSTITCH**



## LPF33PT BOS 33 DEG LOW PROFILE FRAMING NAILER

• Tool Weight: 7.6 lbs • Fastener range: 2" to 3-1/4" • **Sku:**3554074

**DrWALT**



## DCN692M1 20V MAX BRUSHLESS FRAMING NAILER KIT W BATTERY AND CHARGER

• Tool Weight: 9.1 lbs • Paper tape collated framing nails from 2" to 3-1/2", .113" to .131" diameter • **Sku:**5133041

**DrWALT**



## DCN692B 20V MAX BRUSHLESS FRAMING NAILER - BARE TOOL

• Tool Weight: 7.7 lbs • Paper tape collated framing nails from 2" to 3-1/2", .113" to .131" diameter • **Sku:**5133033

**BOSTITCH**



## F21PL PLASTIC COLLATED FRAMING SYSTEM

• Tool Weight: 8.1 lbs • Metal connector nails: plastic collated 1-1/2" and 2-1/2" (.131" to .148" diameter) • Framing nails: 2" to 3 1/2" 21° • Plastic collated stick framing nails (.113" to .162" diameter) • **Sku:**3551521

**HITACHI**



## NR90AEP 3-1/2" ROUND HEAD FRAMING NAILER

• Tool Weight: 7.5 lbs • Superior power, drives 2" to 3-1/2" fasteners into engineered lumber • **Sku:**1424033

**HITACHI**



## NR83A3S STICK NAILER 3-1/4" FULL HEAD (NO DEPTH ADJUSTER)

• Tool Weight: 7.9 lbs • Fires plastic-coated, full-round head nails from 2" to 3-1/4" • **Sku:**1421131



HITACHI



**NR83A3 3-1/4" FH FRAMING STRIP NAILER W/DEPTH ADJ - PLASTIC COLLATION**

• Tool Weight: 7.9 lbs • Fastener length: 2" to 3-1/4" • Sku:1448048

BOSTITCH



**LPF21PL LOW PROFILE PLASTIC COLLATED FRAMING NAILER**

• Tool Weight: 7.6 lbs • 840 in lbs of power drives 3-1/4" x .120 nails into lvl beam at 100 PSI • Sku:3553965

HITACHI



**NR65AKS STRAP-TITE 2-1/2" STRIP NAILER W/SHORT MAGAZINE - PAPER COLLATION**

• Tool Weight: 5.7 lbs • Fastener length: 1-1/2" to 2-1/2" metal connector nails • Sku:1420976

BOSTITCH



**MCN250 2-1/2" METAL CONNECTOR NAILER STRAPSHOT**

• Tool Weight: 6.0 lbs • Drives 1-1/2" and 2-1/2" STRAPSHOT™ fasteners as well as other paper tape collated metal connector nails • Sku:3551881

BOSTITCH



Best Seller

**MCN150 1-1/2" METAL CONNECTOR NAILER**

• Tool Weight: 4.6 lbs • Drives 1-1/2" paper tape collated metal connector nails (.131" to .148" diameter) • Sku:3551369



BOSTITCH



**MCN250S STRAPSHOT METAL CONNECTOR NAILER**

• Tool Weight: 5.5 lbs • Drives 1-1/2" and 2-1/2" STRAPSHOT™ fasteners as well as other paper tape collated metal connector nails • Sku:3553256

BOSTITCH



**N89C-1 INDUSTRIAL HI POWER COIL FRAMING NAILER**

• Tool Weight: 8.0 lbs • Fastener range: 15-degree coil framing nails from 1-1/2" to 3-1/4" • Sku:3551300

BOSTITCH



**N80CB-1 UTILITY COIL NAILER**

• Tool Weight: 8.4 lbs • Fastener range: 15-degree coil framing nails from 1-1/2" to 3 1/2" • Sku:3550028

HITACHI



**NV83A4 3-1/4" COIL NAILER**

• Tool Weight: 8.2 lbs • 2" to 3-1/4" nail length, .099-.131 shank size • Sku:1421239

BOSTITCH



**PN50 MINI IMPACT NAILER**

• Tool Weight: 1.0 lb • Drives bulk finish, framing & timber nails • Sku:3553272

SENCO



**PC1195 MINI PALM HAND NAILER**

• Tool weight: 1 lb • Drives 2" to 3-1/2" bulk nails • Sku:7045808

BOSTITCH



**PN100K PALM NAILER KIT**

• Tool Weight: 2.9 lbs • Drives bulk finish, framing & timber nails • Sku:3550362

**Includes:** Impact nailer with standard nose, finish nail nose, large bore nose, leather comfort glove, nose wrench, hex wrench, tool lubricant and spare o-rings.

**BOSTITCH**



**RN46-1 COIL ROOFING NAILER**  
 • Tool Weight: 4.9 lbs • Fastener range: 3/4" - 1-3/4" 15-degree coil roofing nails  
 • Sku:3550150

**HITACHI**



**NV45AB2 COIL ROOFING NAILER**  
 • Tool Weight: 5.5 lbs • Fastener Length: 7/8" to 1-3/4" • Sku:1421042

**Paslode**



**502575 CS150 CAP STAPLER**  
 • Tool Weight: 4.8 lbs • Fastener range: 3/4" to 1-1/2", 18ga, 3/8" crown staples  
 • Sku:1182153

**BOSTITCH**



**438S2R-1 INDUSTRIAL JAM-FREE ROOFING STAPLER**  
 • Tool Weight: 4.7 lbs • Fastener range: 1/2" to 1-1/2" Wide Crown (1") Staples  
 • Sku:3550231

**BOSTITCH**



**N75C-1 COIL SHEATHING NAILER**  
 • Tool weight: 5.2 lbs • Fastener range: 1-1/2" to 3" 15-degree coil framing and plastic inserted siding nails  
 • Sku:3551342

**HITACHI**



**NV75AG 1-3/4" - 3" MULTI PURPOSE NAILER**  
 • Tool Weight: 5.5 lbs • Fastener Length: 1-3/4" to 3" • Sku:1421051

**HITACHI**



**NV65AH COIL SIDING NAILER**  
 • Tool Weight: 4.6 lbs • Fastener length: 1-1/2" to 2-1/2" • Drives wire and plastic sheet collated nails for added flexibility • Sku:1420330

**BOSTITCH**



**N66C-1 COIL SIDING NAILER (INCLUDES GLOVE)**  
 • Tool weight: 4.7 lbs • Fastener range: 1-1/4" to 2-1/2" 15 degree coil siding and plastic inserted siding nails  
 • Sku:3552616

**Makita**



**AN611 2-1/2" COIL SIDING NAILER**  
 • Tool weight: 6.1 lbs • Fastener length: 1-1/4" to 2-1/2", .080" to .099" diameter  
 • Sku:1070011

**BOSTITCH**



**N66BC-1 CAP NAILER**  
 • Tool Weight: 5.8 lbs • Fastener range: 1-1/4" to 2-1/2" 15 degree coil siding and plastic inserted siding nails, and plastic caps • Sku:3551351

**BOSTITCH**



**SL1838BC BOSTITCH CAP STAPLER**  
 • Tool weight: 3.9lbs • Fastener range: 1" to 1-1/2", 5/16" crown staples & caps  
 • Sku:3553779

# Pneumatic Tools, Construction Staplers

**BOSTITCH**



**650S4-1 CONSTRUCTION STAPLER - MEDIUM CROWN 16 GA**

• Tool weight: 4.5 lbs • Fastener range: 1" to 2", 1/2" Crown Staples  
• Sku:6467822

**Paslode**



**501230 S200-S16 PASLODE 1/2" CROWN 16 GA FINISH STAPLER 3/4"-2"**

• Tool Weight: 4.9 lbs • Drives 3/4" to 2" standard (1/2") crown staples  
• Sku:1176366

**SENCO**



**3L0003N (SNS41) STAPLER 7/16" CROWN 1" TO 2" CONTACT ACTUATION**

• Tool weight: 4.6 lbs • Fastener range: 1" to 2", type 'N' Staples • Sku:6519822

**BOSTITCH**



**450S2-1 LATHING STAPLER - WIDE CROWN 16 GA**

• Tool weight: 4.5 lbs • Fastener range: 1" to 2", 1" Crown Staples  
• Sku:6467865

**HITACHI**



**N5008AC2 2" 16GA STANDARD 7/16" CROWN CONSTRUCTION STAPLER**

• Tool Weight: 4.4 lbs • Fastener Length: 1 to 2" • Sku:1448005

**HITACHI**



**N3804AB3 1-1/2" 18GA NARROW 1/4" CROWN STAPLER**

• Tool Weight: 2.3 lbs • Fastener length: 1/2" to 1-1/2" • Sku:1448021

**HITACHI**



**N5024A2 2" 16GA WIDE 1" CROWN STAPLER**

• Tool Weight: 4.7 lbs • Fastener length: 1" to 2" • Sku:1448013

**Arrow**



**PT50 PNEUMATIC T50 STAPLE GUN**

• Tool Weight: 2.9 lbs • Fastener length: Arrow T50® staples from 1/4" to 9/16" in length • Sku:6540171

# Pneumatic Tools, Specialty Tools

**Tiger Claw**



**F-5899-IGUN TIGER CLAW PNEUMATIC GUN**

• Tool weight: 9.0 lbs • Pneumatic gun for Tiger Claw fasteners, TC-G 150, CONCEALoc, Phantom by Tiger Claw  
• Sku:6533051

**Includes:** gun, case, hosefitting, safety glasses, installation video & instructions

**BOSTITCH**



**LHF2025K 20GA LAMINATE FLOORING STAPLER 1/4"-1/2"**

• Tool weight: 2.9 lbs • Fastener range: 1" 20ga '97' series staples  
• Sku:6467784

**BOSTITCH**



**MIIIFN FLOORING NAILER**

• Tool weight: 11.2 lbs • Fastener range: 1-1/2" to 2" 16ga 'L' shaped flooring cleats • Sku:6467741

**Includes:** nailer, graphite mallet, pre-finished flooring adapter foot

**BOSTITCH**



**MFN-201 MANUAL FLOORING NAILER**

• Tool weight: 8.6 lbs • Fastener range: 1-1/2" to 2" 16ga 'L' shaped flooring cleats • Sku:3553175

**Includes:** flooring nailer, mallet, flooring adaptors (for 1/2" & #38; 5/8" flooring), carrying case and hex wrenches

**ITW**



**650704 FLOOR MASTER 200-C FLOORING CLEAT NAILER**

• Tool weight: 10.5 lbs • Fastener range: 1-1/2" to 2", 16 gauge 'L' cleat flooring nails • Sku:1178628

**Includes:** mallet, adaptor for 1/2" flooring applications, and case

**DEWALT**



**DWFP12569 DEWALT 2-IN-1 PNEUMATIC FLOORING NAILER/STAPLER**

• Tool Weight: 10.85 lbs • Drives 1-1/2" to 2" staples and cleats • Sku:5132690

**BOSTITCH**



**MIIIFS FLOOR STAPLER**

• Tool weight: 11.2 lbs • Fastener Range: 1-1/2" to 2" 15.5ga BCS flooring staples • Sku:3557570

**Includes:** stapler, graphite mallet, pre-finished flooring adapter foot

**BOSTITCH**



**EHF1838K 18GA ENGINEERED HARDWOOD FLOORING STAPLER 1/2" - 5/8"**

• Tool weight: 3.47 lbs • Fastener range: 1" to 1-1/2" 18ga 'SX' series staples • Sku:7273665





# WORLD'S LARGEST 18V™ LITHIUM-ION LINE-UP\* | 100 TOOLS\*\* ONE BATTERY

\*18v slide-style battery \*\*In 2015



## LEADING THE CHARGE TIME MORE TIME WORKING, LESS TIME CHARGING

**NEW** BL1850 18V LXT® Lithium-Ion 5.0Ah Battery

	MAKITA®	COMPETITOR 1	COMPETITOR 2
5.0Ah	BL1850 45 min	1 HOUR 30 MIN	UNKNOWN
4.0Ah	BL1840 40 min	1 HOUR 10 MIN	1 HOUR 30 MIN
3.0Ah	BL1830 30 min	1 HOUR	1 HOUR
2.0Ah	BL1820 25 min	35 MIN	45 min

**NEW** 18V LITHIUM-ION DUAL PORT CHARGER  
DC18RD



CHARGES 2 BATTERIES  
AT THE SAME TIME



**BOSTITCH**



**Best Seller**



**N62FNK-2 INDUSTRIAL OIL-FREE 15GA ANGLED FINISH NAILER KIT**

• Tool weight: 3.8lbs • Fastener range: 1-1/4" to 2-1/2" 'FN' style 15ga Angled Finish Nails • Sku:3550761  
**Includes:** finish nailer, 1,000 2" nails, carrying case, hex wrenches and four profile tips

**SENCO**



**8F0001N FINISHPRO 23 S XP 1-3/8" 23 GAUGE HEADLESS PINNER**

• Tool weight: 2.5 lbs • Fastener range: 1/2" to 1-3/8" '23ga micro pins  
 • Sku:6540155

**BOSTITCH**



**BTFP72155 BOSTITCH SMART-POINT 15GA DA FINISH NAILER KIT**

• Tool weight: 4.22 lbs. • Fastener range: 15ga angled finish nails (DA style) from 1-1/4" to 2-1/2"  
 • Sku:3554465

**BOSTITCH**



**DA1564K 15GA DA FINISH NAILER**

• Tool weight: 4.12lbs • Fastener range: 1-1/4" to 2-1/2" 'DA' style 15ga angled finish nails • Sku:3553973  
**Includes:** tool, carry case, fasteners, 2 standard no-mar tips, 4 profile no-mar tips, hose connection, and steel belt hook

**BOSTITCH**



**GFN1564K 15 GA ANGLED CORDLESS FINISH NAILER**

• Tool weight: 4.0 lbs. • Fastener range: 1-1/4" to 2-1/2" 'FN' style 15ga Angled Finish Nails • Sku:3553540  
**Includes:** battery wall charger, battery car charger, and carrying case

**SENCO**



**5N0001N F15 FUSION 15GA ANGLED FINISH NAILER**

• Tool weight: 5.2 lbs • Drives 15 gauge 1-1/4" to 2-1/2" finish nails  
 • Sku:6473067

**Paslode**



**500910 T250A-F16 16 GA PNEUMATIC ANGLED FINISH NAILER**

• Tool weight: 3.8 lbs • Powerful performer drives 1-1/4" to 2-1/2" nails into the hardest woods • Sku:1173669

**Paslode**



**902400 IM250A LI 16GA ANGLED LITHIUM-ION TRIM**

• Tool weight: 4.5lbs • Powerful, drives 3/4" to 2-1/2" nails into the hardest woods • Sku:1175131

**BOSTITCH**



**FN1664K 16GA FINISH NAILER KIT**

• Tool weight: 3.9lbs • Fastener range: 1" to 2-1/2" 16ga straight finish nails • Sku:3553141  
**Includes:** nailer, 1/4" swivel fitting, 1000 2" finish nails, 4 profile tips, carrying case, hex wrenches & belt hook

**HITACHI**



**NT65M2S 2-1/2" 16GA FINISH NAILER W/BLOW NOZZLE**

• Tool weight: 3.7 lbs • Fastener length: 1" up to 2-1/2" • Sku:1435680

**Paslode**



**501680 T250S-F16 16GA STRAIGHT FINISH NAILER**

• Tool weight: 3.9 lbs • Powerful performer drives 3/4" to 2-1/2" nails into the hardest woods • Sku:1172239

**PORTER-CABLE**



**FN250C 2-1/2" 16 GA FIN NLR**

• Tool weight: 3.8 lbs • Fastener range: 1" to 2-1/2" 16ga straight finish nails  
 • Sku:1170431

**Paslode**



**902000 IM250II PASLODE 16GA IMPULSE FINISH NAILER**

• Tool weight: 4.9 lbs • Drives 3/4" to 2-1/2" nails into the hardest woods • Sku:1172280

**BOSTITCH**



**GFN1664K 16GA STRAIGHT CORDLESS FINISH NAILER**

• Tool weight: 4.2 lbs • Fastener range: 1" to 2-1/2" 16ga straight finish nails • Sku:3553531  
**Includes:** battery wall charger, battery car charger, and carrying case

**DEWALT**



**DC618K DEWALT 18V XRP 1-1/4" - 2-1/2" CRDLS 16 GA 20 DEG ANGLED FINISH NAIL**

• Tool weight: 8.5 lbs • Fastener length: 1-1/4" to 2-1/2" • Sku:5123381

**BOSTITCH**



**BT1855K 18GA BRAD NAILER  
2-1/8"**

• Tool weight: 2.7lbs • Fastener range: 5/8" to 2-1/8" 18ga brad nails  
• Sku:3553159  
**Includes:** 1/4" swivel fitting, (1,000) 2" brads, carrying case, hex wrench, and belt hook

**Paslode**



**500959 T200-F18 18GA BRAD NAILER 2" CAPACITY**

• Tool weight: 2.1 lbs • Powerful, drives nails from 5/8" to 2" • Sku:1172255

**HITACHI**



**NT50AE2 18 GA FINISH NAILER  
3/4" TO 2"**

• Tool weight: 2.2 lbs • Fastener length: 5/8" to 2" 18-gauge fasteners  
• Sku:1420321

**SENCO**



**760102N FINISH PRO 25XP 5/8"-2-1/8" 18 GA BRAD TOOL 2 YR WARR.**

• Tool weight: 2.7 lbs • Fastener range: 5/8" to 2-1/8" 18ga brad nails  
• Sku:6500846

**SENCO**



**1U0021N (FIP18MG) 2-1/8" 18GA BRAD NAILER**

• Tool weight: 2.48 lbs • Fastener range: 5/8" to 2-1/8" 18ga brad nails  
• Sku:6533582

**Paslode**



**901000 IM200-F18 PASLODE CORDLESS 18GA BRAD NAILER IMPULSE**

• Tool weight: 4.9 lbs • Drives 18ga 5/8" to 2" length brad nails • Sku:1172221

**BOSTITCH**



**GBT1850K 18GA CORDLESS BRAD NAILER**

• Tool Weight: 4.0 lbs. • Fastener range: 5/8" to 2" 18ga brad nails  
• Sku:3553566  
**Includes:** battery wall charger, battery car charger, and carrying case

**DEWALT**



**DC608K DEWALT 18 GAUGE 2" CORDLESS BRAD NAILER**

• Tool weight: 7.4 lbs • Fastener length: 5/8" to 2" • Sku:1070096

**BOSTITCH**



**HP118K 23 GAUGE HEADLESS PINNER KIT**

• Tool weight: 2.3 lbs • Fastener range: 1/2" to 1-3/16" 23ga pins • Sku:3551393  
**Includes:** pin nailer, 1/4" air fitting, 500 each of 1/2" pins, 3/4" pins, 1" pins, and case

**HITACHI**



**NP35A 1-3/8" 23GA MICRO PINNER**

• Tool weight: 2.0 lbs • Fastener length: 5/8", 3/4", 1", 1-3/16" and 1-3/8" fastener lengths for use on a wide variety of projects • Sku:1447874

**SENCO**



**8L0001N FINISHPRO 23LXP 23 GAUGE 2" MICRO PINNER**

• Tool weight: 2.7 lbs • Fastener range: 1/2" to 2" 23ga pin nails  
• Sku:6517528

**PORTER-CABLE**



**PIN100 1/2"-1" PIN NAILER**

• Tool weight: 2.0 lbs • Fastener range: 1/2" to 1" 23ga pin nails • Sku:1170406

**BOSTITCH**



**651S5 7/16" CONSTRUCTION STAPLER**

• Tool weight: 4.2 lbs • Fasteners: 16ga, 7/16" crown, 1" to 2" length  
• Sku:3553833  
**Includes:** Vinyl siding adapter

**PORTER-CABLE**



**NS150C 1-1/2" NARROW CROWN STAPLER KIT**

• Tool weight: 2.65 lbs • Fastener range: 1/2" to 1-1/2" 18ga 1/4" crown staples  
• Sku:1170422

**SENCO**



**1W0021N (SLS18MG) 1/4" CROWN 18 GA FINISH STAPLER 1/2" - 1-1/2"**

• Tool Weight: 2.5 lbs • Fastener range: 3/8" to 1-5/8", type 'L' finish staples • Sku:6501605



# Pneumatic Tools, Finish Nailers

**BOSTITCH**



Best Seller

## SX1838K 18GA SX STAPLER 1-1/2"

• Tool weight: 3.0 lbs • Fastener range: 1/2" to 1-1/2" 18ga 'SX' series staples  
 • Sku:3553167  
**Includes:** 1/4" swivel fitting, (1,000) 1" finish staples, carrying case, hex wrench, and belt hook



**FPC**



## 9600 PNEUMATIC FINE WIRE STAPLER (1/4" TO 9/16" #4 STAPLES)

• Tool weight: 1.95 lbs • Fastener range: 1/4" thru 9/16", T50® type staples  
 • Sku:6450008

**BOSTITCH**



## SB-2IN1 BRAD / STAPLER COMBO TOOL

• Tool weight: 2.6 lbs • Fastener range: 5/8" to 1-5/8" 18ga brad nails & 1/2" to 1-1/2" 18ga 'SX' series staples  
 • Sku:3552641  
**Includes:** nailer, 1/4" air fitting, 1,000 2" brad nails, 1,000 1" staples, carrying case, hex wrench, no-mar tip & oil

**BOSTITCH**



## BTFP72156 BOSTITCH SMART-POINT 15GA FN FINISH NAILER KIT

• Tool weight: 4.32 lbs. • Fastener range: 15ga angled finish nails (FN style) from 1-1/4" to 2-1/2" • Sku:3554473

**HITACHI**



## NT65MA4 15 GA ANGLED FINISH NAILER

• Tool Weight: 4.4 lbs • Fastener length: 1-1/4" to 2-1/2" • Sku:1420950

**SENCO**



## 4G0001N FINISHPRO 42XP 15GA ANGLED FINISH NAILER

• Tool weight: 4.7 lbs • Fastener range: 1-1/4" to 2-1/2" 'DA' style 15ga angled finish nails • Sku:6523307

**BOSTITCH**



## BTFP12233 BOSTITCH SMART-POINT 18GA BRAD NAILER KIT 2-1/8"

• Tool weight: 3.1 lbs. • Fastener range: 18ga brad nails from 5/8" to 2-1/8" • Sku:3554449

# Pneumatic Tools, Compressors

**BOSTITCH**



Best Seller

## BTFP02011 6.0G 150PSI PRO GRADE PANCAKE COMPRESSOR

• Tool weight: 32lbs • Tank size: 6.5 gal  
 • Sku:3553493



**SENCO**



## PC1010 1HP ELECTRIC OIL-LESS MINI COMPRESSOR

• Tool weight: 20 lbs • Tank size: 1 gal  
 • Sku:7269196

**BOSTITCH**



## BTF01012 BOSTITCH TRIM AIR COMPRESSOR

• Tool weight: 32lbs • Tank size: 6 gal  
 • Sku:3553787

**DEWALT**



## E810-4V EMGLO HD 4GAL OIL-LUBE STACKED TANK AIR COMPRESSOR

• Tool weight: 78.8 lbs • Tank size: 4 gal  
 • Sku:5130395

**PORTER-CABLE**



## C2002 150 PSI 6 GAL OIL-FREE PANCAKE COMPRESSOR

• Tool weight: 29 lbs • Tank size: 4 gal  
 • Sku:1178784

**HITACHI**



## EC12 2 HP TWIN TANK COMPRESSOR 4.3 GALLON

• Tool weight: 60 lbs • Tank size: 2 gal  
 • Sku:1420861

**SENCO**



## PC0968 1.5HP 2.5 GALLON OIL-LESS COMPRESSOR

• Tool weight: 38 lbs • Tank size: 2.5 gal  
 • Sku:7043562

# Pneumatic Tools, Compressors

**DEWALT**



**D55140 DEWALT HEAVY DUTY 1 GALLON 135 PSI MAX TRIM COMPRESSOR**

• Tool weight: 24 lbs • Tank size: 1 gal  
• Sku:5130441

**Makita**



**MAC2400 2.5HP 4.2 GAL TWIN STACK OIL-LUBRICATED COMPRESSOR**

• Tool weight: 77 lbs • Tank size: 4.2 gal  
• Sku:1004620

**Makita**



**MAC5200 3.0HP 5.2 GAL OIL-LUBRICATED COMPRESSOR**

• Tool weight: 88 lbs • Tank size: 5.2 gal  
• Sku:1004638

**DEWALT**



**EM810-4M EMGLO HD 4GAL DOLLY STYLE STACKED TANK AIR COMPRESSOR**

• Tool weight: 95 lbs • Tank size: 4 gal  
• Sku:5132177

**DEWALT**



**D55153 DEWALT 2HP ELECTRIC 4 GAL TWIN STACK COMPRESSOR**

• Tool weight: 56.5 lbs • Tank size: 4gal twin stack tank • Sku:5151317

**DEWALT**



**D55154 DEWALT HD 1.1HP CONTINUOUS 4GAL ELEC WHEELED DOLLY-STYLE AIR COMPRESSOR**

• Tool weight: 87 lbs • Tank size: 4 gal  
• Sku:5130522

**Makita**



**MAC700 2.0HP 2.6 GAL OIL-LUBRICATED COMPRESSOR**

• Tool weight: 52 lbs • Tank size: 2.6 gal  
• Sku:1004611

**SENCO**



**PC1130 1.5 HP ELECTRIC COMPRESSOR**

• Tool weight: 39 lbs • Tank size: 2.5 gal • Sku:6523285

**DEWALT**



**D55146 DEWALT 1.6HP CONTINUOUS 200PSI 4.5GAL COMPRESSOR**

• Tool weight: 83 lbs • Tank size: 4.5 gal  
• Sku:3554147

**DEWALT**



**D55168 DEWALT 1.6HP CONTINUOUS 200PSI 15GAL WHEELED WORKSHOP COMPRESSOR**

• Tool weight: 92 lbs • Tank size: 15 gal  
• Sku:3554082

**DEWALT**



**D55151 DEWALT HEAVY-DUTY 1.1HP CONTINUOUS 4 GAL ELEC HAND CARRY COMPRESSOR**

• Tool weight: 53.32 lbs • Tank size: 4gal twin stack tank • Sku:5131341

**ROLAIR**



**JC10 2.5 GAL 1HP OIL-LESS AIR COMPRESSOR**

• Tool weight: 39 lbs • Tank size: 2.5gal  
• Sku:1185926

# Pneumatic Tools, Combo Kits

**PORTER-CABLE**



**PCFP12234 FINISH NAILER / BRAD NAILER / STAPLER COMPRESSOR COMBO KIT**

Sku:1184121

**Includes:** 6 gal compressor, 16ga straight finish nailer, 18ga brad nailer, 3/8" crown stapler, 14" x 25' fittings, 2" 16ga finish nails, 1-1/4" 18ga brad nails, 3/8" x 3/8" crown staples & belt hook

**BOSTITCH**



**BTFP72646 3 TOOL COMPRESSOR COMBO KIT**

Sku:3552462

**Includes:** Compressor, 18ga 2" brad nailer, 3/8" crown stapler, 16ga 2-1/2" straight finish nailer, 1/4" x 25' heavy-duty airline with fittings, and sample fasteners

**SENCO**



**PC0947 COMPRESSOR / NAILER FINISH PRO 18 COMBO KIT**

Sku:7262957

**Includes:** FinishPro 18 brad nailer, PC1010 1 gal compressor, 1/4" x 25' coil hose, tool oil, all necessary fittings, safety glasses, manuals, and a variety pack of 18ga brad nails



**Makita**



**5007F 15 AMP 7-1/4" CIRCULAR SAW**

• Tool weight: 11.1 lbs • Motor size: 15AMP • Sku:6998925  
**Includes:** 24T carbide-tipped blade (D-24826), hex wrench 6 (783204-6)

**SKIL**



**5480 SKIL 7-1/4" CIRCULAR SAW 2.3 HP 13 AMP KIT (5400 12A TOOL ONLY, 5485-01)**

• Tool weight: 12 lbs • Motor size: 13AMP • Sku:9915095  
**Includes:** 5480 circular saw, 18-tooth carbide blade, and blade wrench

**HITACHI**



**C7SB2 7-1/4" 15 AMP CIRCULAR SAW W/CASE**

• Tool weight: 10.1 lbs • Motor size: 15AMP • Sku:1420771  
**Includes:** plastic case, wrench, and 24T carbide tipped saw blade

**DEWALT**



**DWE575 7-1/4" LIGHTWEIGHT CIRCULAR SAW**

• Tool weight: 8.8 lbs • Motor size: 15AMP • Sku:5132622  
**Includes:** A carbide-tipped blade and a blade wrench

**SKORPHEIL**



**RK3440K VERSACUT MINI CIRCULAR SAW**

• Tool weight: 6.9lbs • Motor size: 4AMP • Sku:7104553  
**Includes:** 3 blades for a variety of materials

**Makita**



**6390-21 7-1/4" TILT-LOK CIRCULAR SAW 8 POSITION HANDLE 15 AMP W/CASE**

• Tool weight: 10.4 lbs • Motor size: 15AMP • Sku:1120301  
**Includes:** (1) 6390-21 tilt-lok 7-1/4 in. circular saw, (1) blade wrench, (1) carrying case, (1) circular saw blade

**Makita**



**5007MG 7-1/4" MAGNESIUM CIRCULAR SAW**

• Tool weight: 10.1 lbs • Motor size: 15AMP • Sku:6110011  
**Includes:** premium 7-1/4" carbide-tipped framing blade that cuts 50% faster and lasts 2x longer

**Makita**



**5740NB 10.5 AMP 7-1/4" CIRCULAR SAW**

• Tool weight: 8 lbs • Motor size: 10.5AMP • Sku:1001493  
**Includes:** thin kerf premium carbide tipped "Mak Blade"

**SKORPHEIL**



**GCS100 7-1/4" CIRCULAR SAW**

• Tool weight: 11.5 lbs • Motor size: 10 AMP • Sku:7113978  
**Includes:** 7-1/4" x 24T carbide tipped blade, rip guide, and blade wrench

**BOSCH**



**CS5 BLADE LEFT BOSCH 7-1/4" CIRCULAR SAW 15 AMP**

• Tool weight: 16.25 lbs • Motor size: 15AMP • Sku:9916598

**SKIL**



**SHD77M SKIL 15 AMP WORM DRIVE SAW - SAW HOOK, ALUM FOOT, ANTI-SNAG LOWER GUARD**

• Tool weight: 15.3 lbs • Motor size: 15AMP • Sku:9914323

**BLACK & DECKER**



**CS1014 7-1/4" 12AMP CIRCULAR SAW**

• Tool weight: 10.6 lbs • Motor size: 12AMP • Sku:5148537

**SKORPHEIL**



**RC3439 12.0AMP 7-1/4" CIRCULAR SAW**

• Tool weight: 10.6lbs • Motor size: 12AMP • Sku:7101309

# Power Tools, Circular Saws

**BOSCH**



## CS10 BOSCH 7-1/4" CIRCULAR SAW (CS10-B W/BAG)

• Tool weight: 10.2 lbs • Motor size: 15AMP • Sku:6537197

**Makita**



## 5008MGA 8-1/4" MAGNESIUM CIRCULAR SAW W/ELECTRIC BRAKE

• Tool weight: 11.4 lbs • Motor size: 15AMP • Sku:1004409  
**Includes:** 7-1/4" x 24T carbide tipped blade (D-21521), blade wrench (783204-6), rip fence (164095-8)

**DEWALT**



## DWE575SB 7-1/4" NEXT GEN LIGHTWEIGHT CIRCULAR SAW W/BRAKE

• Tool weight: 14lbs • Motor size: 15AMP • Sku:5132681

**HITACHI**



## C7BMR 7-1/4" PRO-GRADE CIRCULAR SAW WITH IDI TECHNOLOGY

• Tool weight: 10.5 lbs • Motor size: 15AMP • Sku:1433016

**PORTER-CABLE**



## PC15TCSM 15 AMP 7-1/4" HEAVY DUTY CIRCULAR SAW

• Tool weight: 9.5 lbs • Motor size: 15AMP • Sku:1183630

**SKIL**



## MAG77LT ULTRALIGHT WORM DRIVE SAW

• Tool weight: 11.6 lbs • Motor size: 15AMP • Sku:9916741  
**Includes:** 7-1/4" x 24-tooth carbide blade, blade wrench

**HITACHI**



## C7ST 7-1/4" CIRCULAR SAW

• Tool weight: 9.4lbs • Motor size: 15AMP • Sku:1447777

**SKIL**



## SHD77-02 SKIL 15 AMP WORM DRIVE SAW - SAW HOOK, STEEL FOOT, ANTI-SNAG LOWER GUARD

• Tool weight: 17.3 lbs • Motor size: 15AMP • Sku:9914242

**DEWALT**



## DW364K DEWALT 7-1/4" REAR PIVOT CIRCULAR SAW KIT W/ELECT BRAKE (DW364)

• Tool Weight: 12 lbs • Motor Size: 15AMP • Sku:1315005  
**Includes:** Carrying case

**DEWALT**



## DWS535 DEWALT 7-1/4" HYPOID FRAMER'S CIRCULAR SAW HIGH TORQUE

• Tool Weight: 13 lbs • Motor Size: 15AMP • Sku:5131120

**SKIL**



## MAG77LT ULTRALIGHT WORM DRIVE SAW

• Tool Weight: 11.6 lbs • Motor Size: 15AMP • Sku:9916741  
**Includes:** 24-tooth carbide blade, blade wrench

**DEWALT**



## DC390B DEWALT 6-1/2" (165MM) 18V CORDLESS CIRCULAR SAW

• Tool Weight: 6.3 lbs • Battery Size: 18V NiCad • Sku:5131740  
**Includes:** Carbide tipped blade and blade wrench (batteries and charger SOLD SEPARATELY)

**DEWALT**



## DC390K DEWALT 18V 6-1/2" CIRCULAR SAW KIT (DW939K)

• Tool weight: 15.9 lbs • Battery size: 18V NiCad • Sku:5148421  
**Includes:** Carbide tipped blade and blade wrench, (1) 18V battery, 1-hour charger & kit box

**DEWALT**



## DCS391M1 20V MAX LITHIUM ION CIRCULAR SAW KIT (DCS391L1 LI-ION 3.0AH)

• Tool weight: 16lbs • Battery size: 20V Li-Ion • Sku:5132304  
**Includes:** (1) DCB204: 20V MAX\* XR Premium Li-Ion battery (4.0 Ah), fast charger, 6-1/2" carbide-tipped blade, and kit box

**Makita**



## 2730-21 M18 FUEL 6" CIRCULAR SAW KIT

• Tool weight: 8lbs • Battery size:18V Li-Ion • Sku:1129945  
**Includes:** (1) M18 FUEL™ 6-1/2" circular saw (2730-20), (1) M18™ REDLITHIUM™ XC 4.0 extended capacity battery pack (48-11-1840), (1) M18™ & M12™ multi-voltage charger (48-59-1812), (1) blade, blade wrench, and contractor bag

**DEWALT**



## SPT67WL-22 SIDEWINDER 7-1/4" CIRCULAR SAW W/DIABLO BLADE

• Tool Weight: 8.6 lbs • Motor Size: 15AMP • Sku:9916997



## CIRCULAR SAW Comparison Chart

Brand	Item #	Blade Size	Amp	No-load Speed	Max Cut @ 90°	Max Cut @ 45°
	<b>5007F</b> (6998925)	7-1/4"	15 Amp	5,800 RPM	2-3/8"	1-3/4"
	<b>5480</b> (9915095)	7-1/4"	13 Amp	5,300 RPM	2-7/16"	1-15/16"
	<b>C7SB2</b> (1420771)	7-1/4"	15 Amp	5,800 RPM	2-3/8"	1-27/32"
	<b>DWE575</b> (5132622)	7-1/4"	15 Amp	5,200 RPM	2-9/16"	1-7/8"
	<b>DWE575</b> (7104553)	3-3/8"	4 Amp	3,500 RPM	1-1/8"	N/A
	<b>RK3440K</b> (1120301)	7-1/4"	15 Amp	5,800 RPM	2-7/16"	1-13/16"
	<b>5007MG</b> (6110011)	7-1/4"	15 Amp	5,800 RPM	2-1/2"	1-3/4"
	<b>5740NB</b> (1001493)	7-1/4"	10.5 Amp	4,700 RPM	2-1/2"	1-5/8"
	<b>C7ST</b> (1447777)	7-1/4"	15 Amp	6,000 RPM	2-7/16"	1-7/8"
	<b>CS10</b> (6537197)	7-1/4"	15 Amp	5,600 RPM	2-7/16"	1-7/8"
	<b>DWE575SB</b> (5132681)	7-1/4"	15 Amp	5,200 RPM	2-9/16"	1-15/16"
	<b>5008MGA</b> (1004409)	8-1/4"	15 Amp	5,200 RPM	3"	2-1/4"

### Pro's Choice Blades

**IRWIN**



**24030 7-1/4" 24T CARBIDE MARATHON FRAMING/RIPPING CIRCULAR SAW BLADE**  
Sku:0756130

**f Freud**



**D0724A DIABLO BLADE 7-1/4" X 24T FRAMING**  
Sku:1354230

**f Freud**



**D0740A DIABLO BLADE 7 -1/4"X 40T FINISH**  
Sku:1354248

**BOSCH**



**JS470E BOSCH TOP HANDLE JIGSAW W/CASE**

• Tool Weight: 10.4 lbs • Motor Size: 7 AMP • Sku:9913009

**DEWALT**



**DW317K DEWALT VS ORBITAL ACTION JIG SAW KIT**

• Tool Weight: 6 lbs • Motor Size: 5.5 AMP • Sku:1314980

**BOSCH**



**JS470EB BOSCH BARREL GRIP JIGSAW KIT**

• Tool Weight: 10 lbs • Motor Size: 7 AMP • Sku:6537189

**BLACK & DECKER**



**JS515 4.5 AMP VAR SPEED JIGSAW KIT W/ QKCLMP & STLN CHNL**

• Tool Weight: 4.7 lbs • Motor Size: 4.5 AMP • Sku:5148791

**Makita**



**4329K JIG SAW 500-3 100SPM VAR SPD ORBITAL CASE**

• Tool Weight: 4.2 lbs • Motor Size: 3.9 AMP • Sku:1004395  
Includes: Jig Saw Blade (792529-7), Hex Wrench 3 (783201-2), Tool Case (824572-9)

**SKIL**



**4395-01 5.5 AMP SKIL VAR SPEED ORBITAL JIGSAW KIT**

• Tool Weight: 5 lbs • Motor Size: 5.5 AMP • Sku:9912509

**DEWALT**



**DC330K DEWALT HEAVY-DUTY 18V CORDLESS VARIABLE SPEED JIG SAW KIT**

• Tool weight: 7.5 lbs • Sku:5140153  
Includes: (1) 18V XRP™ battery, 1 hour charger, jig saw blades, and kit box

**BLACK & DECKER**



**RC3748 5AMP VARIABLE SPEED JIGSAW**

• Tool Weight: 6.4lbs • Sku:7101325

**SKIL**



**4290-02 SKIL VARIABLE SPEED JIGSAW**

• Tool Weight: 5.5 lbs • Sku:9915150

**BLACK & DECKER**



**JS660 4.5AMP VS SMART SELECT JIGSAW**

• Tool Weight: 6 lbs • Sku:5129877

**PORTER-CABLE**



**PC600JS 6AMP ORBITAL JIGSAW**

• Tool Weight: 5.4 lbs • Sku:1183664

**BLACK & DECKER**



**JS700K 1 COMBINATION JIG SAW KIT**

• Tool Weight: 8.9 lbs • Sku:5123798

**Makita**



**4350FCT TOP HANDLE JIGSAW KIT W/ LIGHT (4340FCT)**

• Tool Weight: 5.5 lbs • Sku:6455051  
Includes: Anti-Splintering Insert (415524-7), non-marring base cover (417852-6), hex wrench 4 (783202-0), tool case (824809-4), (2) blade (B10), (2) blade (BR13), (2) blade (B22)

**DEWALT**



**DW331K DEWALT ORBITAL ACTION JIG SAW KIT W/ KEYLESS BLADE CHANGE**

• Tool Weight: 10 lbs • Sku:5131103



# Power Tools, Jig Saw Accessories

**IRWIN**



**3072001 6 PC ASST JIG SAW BLADE T-SHANK SET**  
 Sku:6527094

**IRWIN**



**3071001 6 PC ASST JIG SAW BLADE U-SHANK SET**  
 Sku:6527086

**LENOX**



**20764-C543SA 5PC JIG SAW BLADE SET**  
 Sku:1061143

**LENOX**



**20606-U743JA 7 PC JIG SAW BLADE SET U-SHANK**  
 • Sku:1060392

## Power Tools, Recip Saws

**Milwaukee**



**6509-31 12 AMP SAWZALL RECIP SAW**  
 • Tool weight: 11.9 lbs • Sku:1137832

**DEWALT**



**DW304PK DEWALT 10AMP 4 POSITION HEAVY DUTY KEYLESS RECIPROCATING SAW**  
 • Tool weight: 7 lbs • Sku:1314971

**PORTER-CABLE**



**9748 11.5AMP VS DUAL ACTION QUIK-CHANGE RECIP TIGER SAW**  
 • Tool weight: 9.3 lbs • Sku:1277014

**Skil**



**JR3050T RECIPROCATING SAW (JR3000VX1 W/M FORCE GLOVES)**  
 • Tool weight: 7.1 lbs • Sku:6111114  
**Includes:** tool case (824734-9), blade (723054-A), blade (723066-A)

**Milwaukee**



**6538-21 15AMP SUPER SAWZALL**  
 • Tool weight: 9.8 lbs • Sku:1123017  
**Includes:** (1) 6538-21 15-amp super sawzall reciprocating saw, (1) carrying case

**BOSCH**



**1640VS BOSCH FINE CUT POWER HANDSAW(SAW ONLY)**  
 • Tool weight: 5.2 lbs • Sku:9913297

**Milwaukee**



**6523-21 11 AMP ORBITAL SUPER SAWZALL KIT (6521-21)**  
 • Tool weight: 14.9 lbs • Sku:1120883

**Milwaukee**



**6536-21 ORBITAL SUPER SAWZALL**  
 • Tool weight: 9.8 lbs • Sku:1121081  
**Includes:** saw and case

**PORTER-CABLE**



**PC85TRSOK 8.5AMP ORBITAL RECIPROCATING SAW**  
 • Tool weight: 7.4 lbs • Sku:1183320

# HERE'S SOME STRAIGHT TALK: THIS CURVED BLADE LASTS 2X LONGER



**NEW**

Curved blade with optimized cutting angle puts more teeth in the cut.



FOR UP TO  
**2X**  
LIFE<sup>™</sup>  
VS. STANDARD  
STRAIGHT  
LENOX RECIPS

Introducing the new LENOX Gold Power Arc curved reciprocating saw blades. The Power Arc's revolutionary curved design positions the teeth to cut more efficiently, so it lasts twice as long in nail embedded wood. Longer blade life maximizes productivity and means fewer trips to the tool bag. Prepare for your expectations about recip to be thrown a curve.

# LENOX<sup>®</sup>



LENOXTOOLS.COM

CUSTOMER SUPPORT: 800-628-8810 | TECHNICAL SUPPORT: 800-642-0010



# Power Tools, Recip Saws

HITACHI



**CR13V2 10AMP RECIPROCATING SAW**

• Tool weight: 7.3 lbs • Sku:1420348

SKIL



**9225-01 SKIL ORBITAL RECIPROCATING SAW**

• Tool weight: 13 lbs • Sku:9915168

DEWALT



**DW310K DEWALT 12 AMP RECIPROCATING SAW W/KIT BOX**

• Tool weight: 8.6 lbs • Sku:5131081

DEWALT



**DWE357 10AMP COMPACT RECIPROCATING SAW**

• Tool weight: 9.5 lbs • Sku:5132614

BOSCH



**RS428 BOSCH 14 AMP RECIPROCATING SAW 1-1/8" STROKE LENGTH**

• Tool weight: 12.1 lbs • Sku:9916504  
**Includes:** 14 AMP 1-1/8" reciprocating saw, RS428 wood cutting blade

MILWAUKEE



**2420-21 M12 HACKZALL RECIPROCATING SAW KIT (MINI SAWZALL)**

• Tool weight: 2.6 lbs • Sku:1123173  
**Includes:** (1) M12 red lithium battery, (2) Hackzall TM blades, (1) M12 charger, and (1) contractor bag

DEWALT



**DCS380P1 20V MAX LITHIUM ION RECIPROCATING SAW KIT (DCS380L1 LI-ION 3.0AH)**

• Tool weight: 12.5 lbs • Sku:5132291  
**Includes:** DCS380 reciprocating saw, (1) DCB204: 20-volt max XR premium li-ion battery (4.0 Ah), fast charger, kit box

DEWALT



**DC385K DEWALT HEAVY DUTY 18V CORDLESS RECIPROCATING SAW KIT**

• Tool weight: 8.2 lbs • Sku:5148561  
**Includes:** (1) 18V XRP™ battery, 1 hour charger and kit box

Makita



**JR3070CT 15 AMP AVT RECIP SAW**

• Tool weight: 9.7 lbs • Sku:7573456  
**Includes:** 1 ea. blade (723054-A, 723066-A), metal tool case

BLACK & DECKER



**RS500K 7.5 AMP RECIP SAW KIT**

• Tool weight: 6.8 lbs • Sku:5130115

BOSCH



**RS325 BOSCH 1-1/4" 12 AMP RECIP SAW**

• Tool weight: 11.4 lbs • Sku:9912614

SKIL



**RC3645K 8.0AMP VARIABLE SPEED RECIPROCATING SAW KIT**

• Tool weight: 7.7 lbs • Sku:7101317  
**Includes:** (1) 9-1/4" x 6 TPI blade, (1) 6" x 10 TPI blade, (1) 6" x 18 TPI blade, and a durable carrying case

DEWALT



**DC385B DEWALT 18V CORDLESS RECIPROCATING SAW (TOOL ONLY)**

• Tool weight: 5.8 lbs • Sku:5131677  
**Includes:** BARE TOOL ONLY, (batteries, charger, and case SOLD SEPARATELY)

MILWAUKEE



**2720-21 M18 FUEL SAWZALL KIT**

• Tool weight: 8.9 lbs • Sku:1129872  
**Includes:** charger, blade, and carrying case

SKIL



**GRS550 RECIPROCATING SAW**

• Tool weight: 7.0 lbs • Motor: 5.5 AMP  
 • Stroke length: 7/8" • Speed: 0-2500 SPM • Sku:7114052  
**Includes:** (1) wood cutting blade, (1) metal cutting blade, allen wrench

# Power Tools, Recip Saw Accessories

**IRWIN**



**4935496 11PC RECIPROCATING BLADE SET W/ BAG**

• Sku:6150233

**f Freud**



**DS0014S 14PC DIABLO STEEL & DEMO SET**

• Sku:1359240

**f Freud**



**DS0006S 6PC DIABLO STEEL & DEMO SET**

• Sku:1359231

## Power Tools, Corded Drills

**BLACK & DECKER**



**DR260B 5.2 AMP KEYLESS CHUCK DRILL**

• Tool weight: 2.5 lbs • Motor: 5.2AMP • Chuck size: 3/8" • Speed: 1500 RPM • Sku:5146321

**BLACK & DECKER**



**DWD110K DEWALT 3/8" 7 AMP HEAVY DUTY VSR DRILL KIT W/KEYLESS CHUCK**

• Tool weight: 4.1 lbs • Motor: 7 AMP • Chuck size: 3/8" • Speed 0-2,500 RPM • Sku:1307045

**Milwaukee**



**0240-20 3/8" CORDED DRILL 2800RPM**

• Tool weight: 4.3 lbs • Motor: 8 AMP • Chuck size: 3/8" • Speed: 2800 RPM • Sku:1125621

**DEWALT**



**DWD112 DEWALT 3/8" VSR DRILL KEYLESS CHUCK**

• Tool weight: 4.1 lbs • Motor: 7 AMP • Chuck size: 3/8" • Speed: 2500 RPM • Sku:5148723

**DEWALT**



**DW235G DEWALT 1/2" 0-850 RPM VSR DRILL W/ GROUNDED PLUG**

• Tool weight: 4.2 lbs • Motor: 7.8 AMP • Chuck size: 1/2" • Speed: 850 RPM • Sku:5131073

**BLACK & DECKER**



**RC3031K 4.5AMP 3/8" VSR DRILL**

• Tool weight: 3.3 lbs • Motor: 4.5 AMP • Chuck size: 3/8" • Speed: 0-2,800 RPM • Sku:7101295

**DEWALT**



**DW130V DEWALT 1/2" 0-550RPM VSR SPADE HANDLE DRILL W/VS**

• Tool weight: 7.5 lbs • Motor: 9 AMP • Chuck size: 1/2" • Speed: 0-550 RPM • Sku:1319027

**ALLTRAC**



**841408 KAWASAKI 3/8" VSR DRILL**

• Tool weight: 2.8 lbs • Motor: 3.2 AMP • Chuck size: 3/8" • Speed: 2700 RPM • Sku:5010080

**Milwaukee**



**0234-6 1/2" MAGNUM HOLE SHOOTER SPEED CONTROL DRILL**

• Tool weight: 6 lbs • Motor: 5.5 AMP • Chuck size: 1/2" • Speed: 0-850 RPM • Sku:1124099

**Milwaukee**



**0299-20 1/2" MAGNUM DRILL**

• Tool weight: 5.4 lbs • Motor: 8 AMP • Chuck size: 1/2" • Speed: 0-850 RPM • Sku:1121332



# Power Tools, Corded Drills

**DEWALT**



**DW245 DEWALT 1/2" 0-600 RPM VSR DRILL**

- Tool weight: 4.4 LBS. • Motor: 7.8 AMP
- Chuck size: 1/2" • Speed: 600 RPM
- Sku:1314947

**Makita**



**DS4011 1/2" SPADE HANDLE DRILL**

- Tool weight: 6.3 LBS. • Motor: 8.5 AMP
- Chuck size: 1/2" • Speed: 600 RPM
- Sku:1005707

**BOSCH**



**1013VSR BOSCH 1/2" 0-850 RPM HIGH SPEED DRILL 6.5A W/ CHUCK KEY W/CASE**

- Tool weight: 6 LBS. • Motor: 6.5 AMP
- Chuck size: 1/2" • Speed: 0-850 RPM
- Sku:6537154

**Makita**



**DP4002 1/2" DRILL (VARIABLE SPEED, RVSBL)**

- Tool weight: 4.9 LBS. • Motor: 7 AMP
- Chuck size: 1/2" • Speed: 600 RPM
- Sku:6455174

**PORTER-CABLE**



**PC700D 7AMP 1/2" DRILL**

- Tool weight: 4.8 lbs • Motor: 7 AMP
- Chuck size: 1/2" • Speed: 0-800 RPM
- Sku:1183672

**HITACHI**



**D13VF 1/2" DRILL 0-850 RPM 9AMP**

- Tool weight: 4.6 lbs • Motor: 9 AMP
- Chuck size: 1/2" • Speed: 850 RPM
- Sku:1447891

**SENCO**



**6Y0012N T032001 CORDED SCREWDRIVING**

- Tool weight: 5.5 lbs • Motor: 6.5 AMP
- Chuck size: 5/8" • Speed: 2,500 RPM
- Sku:6501966

**Makita**



**6302H 1/2"VSR PISTOL DRILL 6.5AMP 0-550 RPM W/METAL GEAR HOUSING**

- Tool weight: 4.8 lbs • Motor: 6.5 AMP
- Chuck size: 1/2" • Speed: 0-550 RPM
- Sku:6111084

**BLACK & DECKER**



**DR560 1/2" VSR DRILL HIGH TORQUE 7 AMP**

- Tool weight: 3 lbs • Motor: 7 AMP
- Chuck size: 1/2" • Speed: 800 RPM
- Sku:5149070

**PORTER-CABLE**



**PC600D 6AMP 3/8" VSR DRILL**

- Tool weight: 3.2 lbs • Motor: 6 AMP
- Chuck size: 3/8" • Speed: 0-2,500 RPM • Sku:1183656

**Makita**



**6408K 3/8" CORDED DRILL KIT**

- Tool weight: 3.1 lbs • Motor: 4.9 AMP
- Chuck size: 3/8" • Speed: 0-2,500 RPM • Sku:6110061

**PORTER-CABLE**



**GD38B 3/8" VSR ELECTRIC DRILL**

- Tool weight: 3.6 lbs • Motor: 4.2 AMP
- Chuck size: 3/8" • Speed: 0-3000 RPM
- Sku:7113943

# Power Tools, Corded Impact Wrenches

**DEWALT**



**DW292 DEWALT 1/2" HEAVY DUTY IMPACT WRENCH W/DETENT PIN ANVIL**

- Tool weight: 7 lbs • Motor size: 7.5 AMP • Chuck size: 1/2" • Speed: 2,100 RPM, 2,700 IPM
- Sku:1307070

**PORTER-CABLE**



**PCE201 4.3AMP 1/4" HEX IMPACT DRIVER**

- Tool weight: 3.3 lbs • Motor size: 4.3 AMP • Chuck size: 1/4" • Speed: 2,900 RPM / 3,500 IPM • Sku:1185373

**PORTER-CABLE**



**GIW3075K 1/2" IMPACT WRENCH KIT**

- Tool weight: 7 lbs • Motor size: 7.5 AMP • Chuck size: 1/2" • Speed: 2,100 RPM / 2,700 IPM • Sku:7113927

# Power Tools, Corded Hammer Drills

**DEWALT**



**DW505 DEWALT 1/2" VSR HAMMERDRILL 7.2AMPS**  
 • Tool weight: 4.8 lbs • Motor size: 7.8 AMP • Chuck size: 1/2" • Speed: 0-1,100 / 0-2,700 RPM; 0-19,000 / 0-46,000 BPM • Sku:5131138

**BOSCH**



**HD19-2 BOSCH 1/2" DUAL-TORQUE VSR HAMMER DRILL KIT**  
 • Tool weight: 13.9 lbs • Motor size: 8.5 AMP • Chuck size: 1/2" • Speed: 0-17,000 / 0-51,000 BPM; 0-1,000 / 0-3,000 RPM • Sku:6537201

**DEWALT**



**DWD520K DEWALT 10AMP 1/2" HAMMER DRILL KIT**  
 • Tool weight: 6 lbs • Motor size: 10 AMP • Chuck size: 1/2" • Speed: 0 -1,200 / 0-3,500 RPM; 0-56,000 BPM • Sku:1315030

**BOSCH**



**11316EVS BOSCH SDS-MAX DEMOLITION HAMMER**  
 • Tool weight: 22.5 lbs • Motor size: 14 AMP • Bit Type: SDS-Max • Speed: 900 to 1,890 BPM • Sku:9914986

**HITACHI**



**DH38YE2 1-1/2" SPLINE SHANK ROTARY HAMMER**  
 • Tool weight: 14.1 lbs • Motor size: 8 AMP • Bit type: Spline • Speed: 510 RPM; 2,800 BPM • Sku:1429922

**BOSCH**



**RH540M 1-9/16" SDS-MAX COMBINATION HAMMER**  
 • Tool weight: 13.2 lbs • Motor size: 10 AMP • Bit type: SDS-Max • Speed: 400 RPM; 3,000 BPM • Sku:9916610

**BLACK+DECKER**



**DR670 1 6.5AMP 1/2" VSR 2-SPEED HAMMER DRILL**  
 • Tool weight: 4.4 lbs • Motor size: 6 AMP • Chuck size: 1/2" • Speed: 2,800 RPM; 48,000 BPM • Sku:5141672

**BOSCH**



**11264EVS BOSCH 1-5/8" SDS MAX COMBO ROTARY HAMMER W/ELEC VSR**  
 • Tool weight: 25.5 lbs • Motor size: 13 AMP • Bit type: SDS-Max • Speed: 170 to 340 RPM; 1,700 to 2,900 BPM • Sku:9912304

**HITACHI**



**DV20VB2 1/2" HAMMER DRILL VSR 2-MODE**  
 • Tool weight: 4.9 lbs • Motor: 8.3 AMP • Chuck size: 1/2" • Speed: 0-1,000 / 3,000 RPM • Sku:1447866

**BOSCH**



**RH328VCQ BOSCH 1-1/8" SDS-PLUS ROTARY HAMMER DRILL**  
 • Tool weight: 14 lbs • Motor size: 8 AMP • Bit type: SDS-Plus & 1/2" Standard chuck • Speed: 0 to 900 RPM; 0 to 4,000 BPM • Sku:9914056

**BOSCH**



**11247 BOSCH 1-9/16" SPLINE COMBINATION ROTARY HAMMER TOOL**  
 • Tool weight: 19.5 lbs • Motor size: 10 AMP • Bit type: Spline • Speed: 400 RPM; 3,000 BPM • Sku:9911341

**HITACHI**



**DV16VSS 5/8" HAMMER DRILL 5.4AMP VSR 2-MODE**  
 • Tool weight: 3.3 lbs • Motor: 5.4 AMP • Chuck size: 1/4" • Speed: 0-2,900 RPM • Sku:1447785

**BOSCH**



**11255VSR BOSCH 1" SDS-PLUS BULLDOG EXTREME ROTARY HAMMER**  
 • Tool weight: 6.7 lbs • Motor size: 7.5 AMP • Bit type: SDS-Plus • Speed: 0-1,300 RPM, 0-5,800 BPM • Sku:9912096

**Greenlee**



**GHD1260B 1/2" HAMMER DRILL**  
 • Tool weight: 5 lbs • Motor size: 6 AMP • Speed: 3,300 RPM, 43,500 BPM • Sku:7113951

**Milwaukee**



**5378-21 1/2" HAMMER DRILL W/CASE**  
 • Tool weight: 12 lbs • Motor size: 7.5 AMP • Chuck size: 1/2" • Speed: 0-1,350 RPM, 0-40,000 BPM • Sku:1136445

**PORTER-CABLE**



**PC70THD 1/2" HAMMER DRILL**  
 • Tool weight: 5.1 lbs • Motor size: 7 AMP • Chuck size: 1/2" • Speed: 0-1,100, 0-3,100 RPM; 52,700 BPM • Sku:1179756



## Power Tools, Right Angle Drills

Milwaukee



### 3107-6 1/2" VSR RIGHT ANGLE DRILL KIT (3107-1)

• Tool weight: 16.5 lbs • Motor size: 7AMP • Chuck size: 1/2" • Speed: 0 to 335 / 0 to 750 RPM • Sku:1129937

Makita



### DA3010F 3/8" ANGLE DRILL W/LED LIGHT

• Tool weight: 3.1 lbs • Motor size: 4 AMP • Chuck size: 3/8" • Speed: 0 to 2,400 RPM • Sku:1008102

DEWALT



### DW120K DEWALT 1/2" 400/900 RPM REV. RIGHT ANGLE DRILL KIT

• Tool weight: 9.8 lbs • Motor size: 7 AMP • Chuck size: 1/2" • Speed: 900 RPM • Sku:1314955

Milwaukee



### 1680-21 1/2" SUPER HAWG HD CLOSE QTR DRILL W/CASE

• Tool weight: 14.7 lbs • Motor size: 13 AMP • Chuck size: 1/2" • Speed: 1,750 RPM • Sku:1120638

Milwaukee



### 0370-20 3/8" 0-1300 CLOSE QUARTER DRILL

• Tool weight: 3.9 lbs • Motor size: 3.5 AMP • Chuck size: 3/8" • Speed: 1,300 RPM • Sku:1120603

BOSCH



### 1132VSR BOSCH 3/8" RIGHT ANGLE DRILL WITH DIAL SPEED CONTROL

• Tool weight: 4.5 lbs • Motor size: 3.8 AMP • Chuck size: 3/8" • Speed: 1,100 RPM • Sku:9912738

DEWALT



### GCQD38A 3/8" CLOSE-QUARTER DRILL

• Tool weight: 3.2 lbs • Motor size: 3.5 AMP • Chuck size: 3/8" • Speed: 0-1600 RPM • Sku:7113935

## Power Tools, Corded Drywall Screwdrivers

DEWALT



### DW255 DEWALT 6.0 AMP HEAVY DUTY DRYWALL SCREWDRIVER 0-5300RPM

• Tool weight: 2.9 lbs • Motor size: 6 AMP • Speed: 5,300 RPM • Sku:1314963

DEWALT



### DW268 DEWALT VERSA-CLUTCH SCREWDRIVER

• Tool weight: 3.7 lbs • Motor size: 6.5 AMP • Speed: 2,500 RPM • Sku:1307053

DEWALT



### DW272 DEWALT VSR DRYWALL SCREWDRIVER - 6.3 AMP 0-4000RPM

• Tool weight: 4.2 lbs • Motor size: 6.3 AMP • Speed: 4,000 RPM • Sku:5130166

Milwaukee



### 6742-20 DRYWALL SCREW-SHOOTER VSR

• Tool weight: 3.5 lbs • Motor size: 6.5 AMP • Speed: 0 to 4,000 RPM • Sku:1136402

DEWALT



### DW252 DEWALT HEAVY DUTY VSR DRYWALL SCREWDRIVER

• Tool weight: 4.2 lbs • Motor size: 6 AMP • Speed: 4,000 RPM • Sku:1176102

BOSCH



### SG450 BOSCH MAGNESIUM DRYWALL SCREWGUN

• Tool weight: 4.6 lbs • Motor size: 7 AMP • Speed: 0 to 4,500 RPM • Sku:6450032

# Power Tools, Screwdrivers/Collated Screwdrivers



## DW257 DEWALT HEAVY DUTY DECK SCREWDRIVER W/QUIET CLUTCH

• Tool weight: 3.5 lbs • Motor size: 6.2 AMP • Speed: 2,500 RPM • Sku:1315056



## PRO300SM35K QUIK DRIVE DECKING SYSTEM KIT W/ MAKITA 3500 RPM SCREWDRIVER MOTOR

• Tool weight: 15.3 lbs • Motor size: 6.0 AMP • Speed: 3,500 RPM • Sku:7048611



## SD-20-P13KDE PAM AUTO FEED SCREW SYSTEM 2500RPM

• Tool weight: 6.5 AMP • Speed: 2,500 RPM • Sku:7115041



## SD-20-P13KUE PAM UNIVERSAL AUTO FEED SCREW SYSTEM 2500RPM

• Tool weight: 6.5 AMP • Speed: 2,500 RPM • Sku:7115032



## 6W0011N DS440AC 3" CORDED ATTACHMENT W/4000 RPM SCREWDRIVER

• Tool weight: 6.5 lbs • Motor size: 6.4 AMP • Speed: 0-4000 RPM • Sku:6540147



## 6Y0012N DS325AC CORDED SCREWDRIVING

• Tool weight: 5.5 lbs • Motor size: 6.5 AMP • Speed: 2,500 RPM • Sku:6501966



## 7T0001N DS235AC 5/8" - 3" CORDED COLLATED AUTO-FEED SCREWDRIVER

• Tool weight: 4.7 lbs • Motor size: 120V • Speed: 0-5,000 RPM • Sku:6540139



## 7W0001N DS215 2" 18V LI-ION 5000 RPM AUTO-FEED SCREWDRIVER

• Tool weight: 4.9 lbs • Motor size: 18V AMP • Speed: 0-5,000 RPM • Sku:6540121

# Power Tools, Cordless Drills

BLACK & DECKER



## GCO18SFB 18V COMPACT CRDLS DRILL W/STUD SENSOR & BAG

• Tool weight: 4.5 lbs • Battery size: 18V • Chuck size: 3/8" • Speed: 0-750 RPM • Sku:7273461



DEWALT



## DC720KA DEWALT 18V CORDLESS COMPACT DRILL/DRIVER

• Tool weight: 4.8 lbs • Battery size: 18V • Chuck size: 1/2" • Speed: 0 to 500 / 0 to 1700 RPM • Sku:5130433



BLACK & DECKER



## LDX172C BLACK & DECKER 7.2V LITHIUM DRILL/DRIVER

• Tool weight: 2.77 lbs • Battery size: 7.2V • Chuck size: 3/8" • Speed: 550 RPM • Sku:5132703



PORTER-CABLE



## PCC606LA PC 20V LIT DRILL/DRIVER

• Tool weight: 5 lbs • Battery size: 20V • Chuck size: 1/2" • Speed: 0 to 400 / 0 to 1,600 RPM • Sku:1185489







**DC750KA DEWALT 9.6V COMPACT 3/8" CORDLESS DRILL KIT**  
 • Tool weight: 3.4 lbs • Battery size: 9.6V  
 • Chuck size: 3/8" • Speed: 0 to 300 / 0 to 1,100 RPM • **Sku:5149487**



**PCL120DDC-2 PORTER CABLE 12V MAX COMPACT LITHIUM 3/8" DRILL / DRIVER**  
 • Tool weight: 2.4 lbs • Battery size: 12V  
 • Chuck size: 3/8" • Speed: 0 to 315 / 0 to 1,200 RPM • **Sku:1182722**



**DC759KA DEWALT 18V 1/2" COMPACT CORDLESS DRILL/DRIVER**  
 • Tool weight: 5.2 lbs • Battery size: 18V  
 • Chuck size: 1/2" • Speed: 0 to 450 / 0 to 1,500 RPM • **Sku:5131201**



**DCD790D2 20V MAX COMPACT BL DRILL / DRIVER KIT**  
 • Tool weight: 3.5 lbs • Battery size: 20V • Chuck size: 1/2" • Speed: 0 to 600 / 0 to 2,000 RPM • **Sku:5133009**



**DCD760KL DEWALT 1/2" (13MM) 18V CORDLESS COMPACT LI-ION DRILL/DRIVER KIT**  
 • Tool weight: 4 lbs • Battery size: 18V  
 • Chuck size: 1/2" • Speed: 0 to 500 / 0 to 1,700 RPM • **Sku:5131791**



**DCD785C2 20V MAX LI-ION COMPACT HAMMERDRILL / DRIVER KIT 1.5AH**  
 • Tool weight: 3.5 lbs • Battery size: 20V  
 • Chuck size: 1/2" • Speed: 0-600 / 0 to 2000 RPM • **Sku:5132215**



**2407-22 M12 3/8" DRILL/DRIVER KIT**  
 • Tool weight: 2.5 lbs • Battery size: 12V  
 • Chuck size: 3/8" • Speed: 0 to 400 / 0 to 1,500 RPM • **Sku:1123297**



**PCL180CDK-2 18V LITHIUM DRILL/DRIVER**  
 • Tool weight: 3.8 lbs • Battery size: 18V • Chuck size: 1/2" • Speed: 0 to 350 / 0 to 1,500 RPM • **Sku:1179705**



**LXPH01 18V LXT LITHIUM-ION CORDLESS 1/2" HAMMER DRIVER-DRILL KIT**  
 • Tool weight: 4 lbs • Battery size: 18V  
 • Chuck size: 1/2" • Speed: 0 to 400 / 0 to 1,500 RPM • **Sku:1006479**



**DCF610S2 DEWALT 1/4" 12V MAX CORDLESS SCREWDRIVER KIT**  
 • Tool weight: 2.2 lbs • Battery size: 12V  
 • Chuck size: 1/4" • Speed: 0 to 1,050 RPM • **Sku:5131804**



**PS21-2A BOSCH 12V MAX POCKET DRIVER W/2 BATTERIES**  
 • Tool weight: 1.12 lbs • Battery size: 12V • Chuck size: 1/4" • Speed: 0 to 350 / 0 to 1,300 RPM • **Sku:9916288**



**2606-22CT M18 1/2" COMPACT DRILL/DRIVER KIT**  
 • Tool weight: 9.4 lbs • Battery size: 18V • Chuck size: 1/2" • Speed: 0 to 1,800 RPM • **Sku:1129775**



**SS2800 SHOPSERIES 18V LITHIUM DRILL W/ONE BATTERY**  
 • Tool weight: 4 lbs • Battery size: 18V  
 • Chuck size: 3/8" • Speed: 0 to 1,200 RPM • **Sku:7106084**



**2415-21 M12 CORDLESS RIGHT ANGLE DRILL / DRIVER KIT**  
 • Tool weight: 2.4 lbs • Battery size: 12V  
 • Chuck size: 3/8" • Speed: 0 to 800 RPM • **Sku:1123602**



**DS18DSAL 18V 1/2" DRILL / DRIVER**  
 • Tool weight: 3.3 lbs • Battery size: 18V  
 • Chuck size: 1/2" • Speed: 0 to 1,500 RPM • **Sku:1443186**



**GCD18BK 18V VSR DRILL/DRIVER KIT**  
 • Tool weight: 3.4 lbs • Battery size: 18V  
 • Chuck size: 3/8" • Speed: 0-550 RPM • **Sku:7113901**

DEWALT



**RC2804K2 18V 3/8" CORDLESS DRILL/DRIVER KIT (2) BATTERIES**  
 • Tool weight: 8 lbs • Battery size: 18V  
 • Chuck size: 3/8" • Speed: 0-600 RPM  
 • Sku:7101279

DEWALT



**DCD710S2 DEWALT 3/8" 12V MAX CORDLESS DRILL / DRIVER KIT**  
 • Tool weight: 2.4 lbs • Battery size: 12V  
 • Chuck size: 3/8" • Speed: 1,500 RPM  
 • Sku:5131839

PORTER-CABLE



**PC180DK-2 18V NICAD DRILL**  
 • Tool weight: 5.1 lbs • Battery size: 18V  
 • Chuck size: 1/2" • Speed: 1,400 RPM  
 • Sku:1179691

DEWALT



**DCD980M2 20V MAX LITHIUM ION PREMIUM 3SP DRILL/ DRIVER KIT**  
 • Tool weight: 11.6 lbs. • Batter size: 20V • Chuck size: 1/2" • Speed: 0 to 575 / 0 to 1,350 / 0 to 2,000 RPM  
 • Sku:5132223

BOSCH



**PS31-2AL BOSCH 12V MAX CORDLESS LITHIUM-ION 3/8" DRILL DRIVER W/L-BOXX**  
 • Tool weight: 2.14 lbs • Battery size: 12V • Chuck size: 3/8" • Speed: 0 to 1,300 RPM • Sku:9916296

BLACK & DECKER



**PD600 6V ALL IN 1 DRILL/DRIVER PIVOT PLUS**  
 • Tool weight: 2.8 lbs • Battery size: 6V  
 • Chuck size: 1/4" • Speed: 600 RPM  
 • Sku:7272901

MAKITA



**840051 KAWASAKI 19.2V CORDLESS DRILL / DRIVER**  
 • Tool weight: 7.15 lbs • Battery size: 19.2V • Chuck size: 3/8" • Speed: 1,100 RPM • Sku:5010101

DEWALT



**DC742KA DEWALT COMPACT 3/8" (10MM) 12V CORDLESS DRILL/DRIVER KIT**  
 • Tool weight: 3.8 lbs • Battery size: 12V • Chuck size: 3/8" • Speed: 0 to 400 / 0 to 1450 RPM • Sku:5130450

MILWAUKEE



**2603-22 M18 FUEL 1/2" COMPACT DRILL KIT W/XC BATTERIES**  
 • Tool weight: 4.9 lbs • Battery size: 18V  
 • Chuck size: 1/2" • Speed: 0 to 550 / 0 to 1,850 RPM • Sku:1128311

MILWAUKEE



**2403-22 M12 FUEL 1/2" DRILL/ DRIVER KIT**  
 • Tool weight: 1.6 lbs • Battery size: 12V  
 • Chuck size: 1/2" • Speed: 0 to 450 / 0 to 1,700 RPM • Sku:1129791

BOSCH



**DDH181-01 18V BRUTE TOUGH DRILL DRIVER W/2 3.0AH HC BATTERIES**  
 • Tool weight: 4.7 lbs • Battery size: 18V  
 • Chuck size: 1/2" • Speed: 0 to 380 / 0 to 1,600 • Sku:9915532

DEWALT



**DCD910KX DEWALT 12V XRP DRILL/DRIVER KIT**  
 • Tool weight: 5.2 lbs • Battery size: 12V • Chuck size: 1/2" • Speed: 0 to 425 / 0 to 1,200 / 0 to 1,800 RPM • Sku:1309013

MILWAUKEE



**2603-22CT M18 FUEL 1/2" COMPACT DRILL KIT**  
 • Tool weight: 4.4 lbs • Battery size: 18V  
 • Chuck size: 1/2" • Speed: 0 to 550 / 0 to 1,850 RPM • Sku:1128302

DEWALT



**DC730KA DEWALT COMPACT 1/2" (13MM) 14.4V CORDLESS DRILL/DRIVER KIT**  
 • Tool weight: 4.3 lbs • Battery size: 14.4V • Chuck size: 1/2" • Speed: 0 to 400 / 0 to 1,450 RPM • Sku:5130468

DEWALT



**DCD940KX DEWALT 18V CORDLESS XRP DRILL / DRIVER KIT**  
 • Tool weight: 6.25 lbs • Battery size: 18V  
 • Chuck Size: 1/2" • Speed: 0 to 400 / 0 to 1,500 RPM • Sku:5130379

BLACK & DECKER



**SS12C 12V SMART SELECT DRILL**  
 • Tool weight: 5 lbs • Battery size: 12V  
 • Chuck size: 3/8" • Speed: 0 to 400 / 0 to 1,200 RPM • Sku:5124069



# Power Tools, Cordless Hammer Drills

DEWALT



**DCD780C2 20V MAX LI-ION COMPACT DRILL / DRIVER KIT 1.5AH**  
 • Tool weight: 3.4 lbs • Battery size: 20V • Chuck size: 1/2" • Speed: 0 to 600 / 0 to 2,000 RPM • Sku:5132207

DEWALT



**DCD950KX DEWALT 18V XRP MID HANDLE HAMMERDRILL/ DRIVER KIT**  
 • Tool weight: 6.2 lbs • Battery size: 18V • Chuck size: 1/2" • Speed: 0 to 500 / 0 to 1,250 / 0 to 2,000 RPM • Sku:5151295

DEWALT



**DCD985M2 20V MAX LITHIUM ION PREMIUM 3SP HAMMER-DRILL KIT**  
 • Tool weight: 5.2 lbs • Battery size: 20V • Chuck size: 1/2" • Speed: 0 to 575 / 0 to 1,350 / 0 to 2,000 RPM • Sku:5132231

DEWALT



**DCD950B DEWALT 1/2" (13MM) 18V XRP HAMMERDRILL/ DRILL/DRIVER (TOOL ONLY)**  
 • Tool weight: 3.9 lbs (tool only) • Battery size: 18V • Chuck size: 1/2" • Speed: 0 to 500 / 0 to 1,250 / 0 to 2,000 RPM • Sku:5131669

DEWALT



**DC725KA DEWALT COMPACT 1/2" (13MM) 18V CORDLESS HAMMERDRILL KIT**  
 • Tool weight: 4.9 lbs • Battery size: 18V • Chuck size: 1/2" • Speed: 0 to 500 / 0 to 1,700 RPM • Sku:5130611

BOSCH



**DDS181-02L 18V COMPACT TOUGH 1/2" DRILL/DRIVER**  
 • Tool weight: 12 lbs • Battery size: 18V • Chuck size: 1/2" • Speed: 0 to 1,700 RPM • Sku:9916717

MILWAUKEE



**2604-22CT M18 FUEL 1/2" COMPACT HAMMER DRILL KIT**  
 • Tool weight: 10.8 lbs • Battery size: 18V • Chuck size: 1/2" • Speed: 0 to 550 / 0 to 1,850 RPM • Sku:1128337

MILWAUKEE



**2604-22 M18 FUEL 1/2" COMPACT HAMMER DRILL KIT W/XC BATTERIES**  
 • Tool weight: 13.1 lbs • Battery size: 18V • Chuck size: 1/2" • Speed: 0 to 1,850 RPM • Sku:1128329

DEWALT



**DCD795D2 20V MAX COMPACT BL HAMMER DRILL KIT**  
 • Tool weight: 8.9 lbs • Battery size: 20V • Chuck size: 1/2" • Speed: 0 to 2,000 RPM • Sku:5133017

MILWAUKEE



**2797-22 M18 FUEL HAMMER DRILL W/IMPACT DRIVER**  
 • Tool weight: 17.9 lbs • Battery size: 18V • Sku:1131168  
**Includes:** (1) 2604-20 hammer drill, chuck size: 1/2", speed: 0-1850RPM; (1) 2653-20 impact driver, chuck size: 1/4", speed: 0-2900RPM; (2) M18 battery pack; (1) M18 charger; (1) belt clip, carrying case, and side handle

MILWAUKEE



**2697-22 M18 HAMMER DRILL W/IMPACT DRIVER**  
**Sku:1131176**  
**Includes:** (1) 2607-20 hammer drill, tool weight: 3 lbs, battery size: 18V, chuck size: 1/2", speed: 0-400/0-1,000RPM; (1) 2656-20 impact driver, tool weight: 3.1 lbs, battery size: 18V, chuck size: 1/4", speed: 0-2750RPM; (2) battery pack; (1) charger; (1) contractor bag

MILWAUKEE



**2404-22 M12 FUEL 1/2" HAMMER DRILL/DRIVER KIT**  
 • Tool weight: 2.6 lbs. • Battery size: 12V • Chuck size: 1/2" • Speed: 0 to 1,700 RPM • Sku:1129961

# Milwaukee®

THE WORLD LEADER  
IN CORDLESS INNOVATION

**M12**

SYSTEM

**M18**

SYSTEM

**M28**

SYSTEM



OVER 120 JOBSITE SOLUTIONS



**DrWALT**



Pro's  
Choice



**DC825KA DEWALT HEAVY-DUTY 1/4" (6.4MM) 18V IMPACT DRIVER KIT**

• Tool weight: 5 lbs • Battery size: 18V  
• Chuck size: 1/4" • Speed: 0 to 2,400 RPM • Sku:5130590

**Milwaukee**



**2653-22 M18 FUEL 1/4" HEX IMPACT DRIVER KIT W/XC BATTERIES**

• Tool weight: 3.6 lbs • Battery size: 18V  
• Chuck size: 1/4" • Speed: 0 to 2,900 RPM • Sku:1128639

**Milwaukee**



**2657-22 M18 2-SPEED 1/4" HEX IMPACT DRIVER KIT**

• Tool weight: 3.8 lbs • Battery size: 18V  
• Chuck size: 1/4" • Speed: 0 to 2,750 RPM • Sku:1129759

**DrWALT**



**DCF885M2 20V MAX LITHIUM ION 1/4" IMPACT DRIVER KIT**

• Tool weight: 8.8 lbs • Battery size: 20V  
• Chuck size: 1/4" • Speed: 0 to 2,800 RPM • Sku:5132258

**BOSCH**



**25618-02 BOSCH IMPACT DRIVER KIT**

• Tool weight: 9.9 lbs • Battery size: 18V  
• Chuck size: 1/4" • Speed: 0 to 3,200 RPM • Sku:9915991

**BOSCH**



**PS41-2A BOSCH 12V MAX IMPACT DRIVER**

• Tool weight: 5.9 lbs • Battery size: 12V  
• Chuck size: N/A • Speed: 0 to 2,600 RPM • Sku:9916300

**DrWALT**



**DC825B DEWALT 1/4" (6.4MM) 18V CORDLESS IMPACT DRIVER (TOOL ONLY)**

• Tool weight: 2.2 lbs • Battery size: 18V • Chuck size: 1/4" • Speed: 0 to 2,400 RPM • Sku:5131634

**DrWALT**



**DCF885C2 20V MAX LITHIUM ION 1/4" IMPACT DRIVER KIT 1.5AH**

• Tool weight: 7.3 lbs • Battery size: 20V  
• Chuck size: 1/4" • Speed: 0 to 2,800 RPM • Sku:5132240

**DrWALT**



**DCF815S2 DEWALT 1/4" 12V MAX CORDLESS IMPACT DRIVER KIT**

• Tool weight: 2 lbs • Battery size: 12V  
• Chuck size: 1/4" • Speed: 0 to 2,450 RPM • Sku:5131812

**Milwaukee**



**2462-22 M12 1/4" HEX IMPACT DRIVER KIT - MINI IMPACT**

• Tool weight: 2.3 lbs • Battery size: 12V  
• Chuck size: 1/4" • Speed: 0 to 2,500 RPM • Sku:1123181

**Makita**



**DT01W 12V CORDLESS IMPACT DRIVER KIT**

• Tool weight: 2 lbs • Battery size: 12V  
• Chuck size: 1/4" • Speed: 0 to 2,400 RPM • Sku:1004590

**DrWALT**



**DCF886D2 20V MAX XR LITHIUM ION BRUSHLESS 1/4" IMPACT DRIVER KIT**

• Tool weight: 8.2 lbs • Battery size: 20V  
• Chuck size: 1/4" • Speed: 0 to 2,800 RPM • Sku:5133092

**Milwaukee**



**2451-22 M12 3/8" SQUARE DRIVE IMPACT KIT**

• Tool weight: 2.3 lbs • Battery size: 12V  
• Chuck size: 3/8" • Speed: 0 to 2,200 RPM • Sku:1123319

**Milwaukee**



**2653-22CT M18 FUEL 1/4" HEX IMPACT DRIVER KIT**

• Tool weight: 3 lbs • Battery size: 18V  
• Chuck size: 1/4" • Speed: 0 to 2,900 RPM • Sku:1128621

**Milwaukee**



**2657-22CT M18 2 SPEED 1/4" HEX IMPACT CP KIT**

• Tool weight: 3.1 lbs • Battery size: 18V • Chuck size: 1/4" • Speed: 0 to 2,750 RPM • Sku:1128612

## Power Tools, Cordless Impact Drivers

**DEWALT**



**DCF895M2 20V MAX XR LITHIUM ION BRUSHLESS 3SP 1/4" IMPACT DRIVER**

• Tool weight: 8.7 lbs • Battery size: 20V  
• Chuck size: 1/4" • Speed: 0 to 2,850 RPM • Sku:5132568

**PORTER-CABLE**



**PC180IDK-2 18V IMPACT DRIVER - NiCd**

• Tool weight: 8 lbs • Battery size: 18V  
• Chuck size: 1/2" • Speed: 0 to 350 / 0 to 1,400 RPM • Sku:1182455

**HITACHI**



**WH18DSAL 18V IMPACT DRIVER 1.5AH SLIDE LI-ION 1280IN/LBS TORQUE 2/BATTERIES**

• Tool weight: 3.3 lbs • Battery size: 18V  
• Chuck size: 1/4" • Speed: 0 to 2,600 RPM • Sku:1443178

**MILWAUKEE**



**2453-22 M12 FUEL 1/4" HEX IMPACT DRIVER KIT**

• Tool weight: 2.2 lbs • Battery size: 12V  
• Chuck size: 1/4" • Speed: 0 to 2,650 RPM • Sku:1129724

**PORTER-CABLE**



**GCID18K 18V IMPACT DRIVER KIT**

• Tool weight: 4 lbs • Battery size: 18V  
• Chuck size: 1/4" • Speed: 0 to 2100 RPM • Sku:7113919

## Power Tools, Cordless Impact Wrenches

**DEWALT**



**DW059K-2 DEWALT HEAVY-DUTY 1/2" 18V CORDLESS HIGH TORQUE IMPACT WRENCH KIT 2 BATTERIES**

• Tool weight: 7.5 lbs • Battery size: 18V  
• Chuck size: 1/2" • Speed: 0 to 1,650 RPM / 0 to 2,600 IPM • Sku:5141206

**DEWALT**



**DC820KA DEWALT HEAVY-DUTY 1/2" (13MM) 18V IMPACT WRENCH KIT**

• Tool weight: 4.6 lbs • Battery size: 18V  
• Chuck size: 1/2" • Speed: 0 to 2,400 RPM / 0 to 2,700 IPM • Sku:5130581

**DEWALT**



**DC823B DEWALT 3/8" (9.5MM) 18V CORDLESS IMPACT WRENCH (TOOL ONLY)**

• Tool weight: 2.1 lbs • Battery size: 18V  
• Chuck size: 3/8" • Speed: 0 to 2,400 RPM / 0 to 2,700 IPM • Sku:5131715

**MILWAUKEE**



**2762-22 M18 FUEL 1/2" HIGH TORQUE IMPACT WRENCH W/PIN DETENT KIT**

• Tool weight: 15 lbs • Battery size: 18V  
• Chuck size: 1/2" • Speed: 0 to 1,700 RPM / 0 to 2,300 IPM • Sku:1131206





# Power Tools, Cordless Screwdrivers

BLACK & DECKER



## LI2000 3 POSITION RECHARGABLE SCREWDRIVER

- Tool weight: 5.2 lbs • Battery size: 3.6V
- Chuck size: N/A • Speed: N/A
- Sku:5151279

SKIL



## 2350-01 3.6V LI-ION CORDLESS 2 IN 1 SCREWDRIVER / LED FLASHLIGHT

- Tool weight: 1.3 lbs • Battery size: 3.6V
- Chuck size: 1/4" • Speed: 0 to 180 RPM • Sku:9912126

BLACK & DECKER



## LI4000 SMART SELECT LI SCREWDRIVER W/SCREW HOLDER

- Tool weight: 2.3 lbs • Battery size: 3.6V • Chuck size: 1/4" • Speed: 0 to 180 RPM • Sku:7271450

BLACK & DECKER



## DW920K-2 DEWALT 7.2V CORDLESS 2 POSITION SCREWDRIVER KIT 2-BATTERIES

- Tool weight: 7.1 lbs • Battery size: 7.2V • Chuck size: 1/4" • Speed: 0 to 500 RPM • Sku:6496598

WORX



## WX254L WORX SEMI-AUTOMATIC 12PC SCREWDRIVER

- Tool weight: 2.3 lbs • Battery size: 4V
- Chuck size: 1/4" • Speed: 0 to 230 RPM • Sku:7106921

BLACK & DECKER



## PD600 6V ALL IN 1 DRILL/DRIVER PIVOT PLUS

- Tool weight: 2.8 lbs • Battery size: 6V
- Chuck size: 1/4" • Speed: 600 RPM
- Sku:7272901

GENCO



## GLSD72A 37.2V LITHIUM-ION SCREWDRIVER

- Tool weight: 1 lbs • Battery size: 7.2V
- Chuck size: 1/4" • Speed: 200/400 RPM • Sku:7113960

ILM



## 2401-22 M12 1/4" HEX SCREWDRIVER KIT

- Tool weight: 2.2 lbs • Battery size: 12V
- Chuck size: 1/4" • Speed: 0 to 500 RPM • Sku:1121987

# Power Tools, Rotary Tools

DREMEL



## 3000-1/24 DREMEL 3000 ROTARY TOOL 2 ATTACHMENTS/28 ACCESS (3962, -02, 300-1/24)

- Tool weight: 3.2 • Motor size: 120V
- Speed: 32,000 RPM • Sku:1171747

DREMEL



## 100-N/7 DREMEL SINGLE SPEED ROTARY TOOL (100-N/10)

- Tool weight: 1.6 • Motor size: 1.5 AMP
- Speed: 35,000 RPM • Sku:1014366

DREMEL



## 400-2/30 DREMEL 400 SERIES XPR ROTARY TOOL KIT (400-3/51, 2/51)

- Tool weight: 4.5 • Motor size: 1.6 AMP
- Speed: 35,000 RPM • Sku:7221649

# Power Tools, Cordless Right Angle Drill

DREMEL



## 7700-1/15 DREMEL 7.2V MULTI PRO 2 SPEED CORDLESS TOOL KIT (7700, -01, -02)

- Tool weight: 1.9 • Motor size: 7.2V
- Speed: 20,000 RPM • Sku:0551546

DREMEL



## 4200-6/40 QUICK CHANGE ROTARY TOOL

- Tool weight: 5.6 • Motor size: 1.6 AMP
- Speed: 5,000 to 35,000 RPM
- Sku:7220286

DEWALT



## DCD740C1 20V MAX LI-ION COMPACT RIGHT ANGLE DRILL KIT 1.5AH

- Tool weight: 8.3 lbs • Battery size: 20V
- Chuck size: 3/8" • Speed: 0 to 2,000 RPM • Sku:5132193

# Power Tools, Cordless Tool Combo Kits

**Makita**



## LXT601 6PC LITHIUM-ION 18V COMBO KIT

**Sku:**1003666

**Includes:** LXPH01, BJR182, BSS611, LXDT04, BGA452, BML185 and 2 ea. 18V batteries

**HITACHI**



## DS14DV3 14 VOLT 3/8" DRIVER/DRILL KIT

• Tool weight: 4 lbs • Battery size: 14.4V  
• Chuck size: 3/8" • Speed: 0 to 400 / 0 to 1,200 RPM • **Sku:**1420429

**HITACHI**



## DS18DV3 18 VOLT 1/2" DRIVER/DRILL KIT (DS18DVB)

• Tool weight: 4.4 lbs • Battery size: 18V  
• Chuck size: 1/2" • Speed: 0 to 400 or 0 to 1,200 RPM • **Sku:**1420437

**Makita**



## LCT200W 18V COMPACT LITHIUM 2PC COMBO KIT (BDF452, BTD142, BAG)

**Sku:**1004361

**Includes:** driver-drill, impact driver and 2 ea. compact 18V batteries

**DEWALT**



## DCK280C2 20V MAX LI-ION COMPACT DRILL & IMPACT COMBO KIT 1.5AH

**Sku:**5132380

**Includes:** DCD780 1/2" drill/driver, DCF885 1/4" impact driver, (2) 20V MAX\* lithium ion 1.5 Ah battery packs, fast charger, (2) belt hooks, contractor bag

**DEWALT**



## DCK211S2 DEWALT 12V MAX CORDLESS DRILL / IMPACT DRIVER COMBO KIT

**Sku:**5131855

**Includes:** DCD710 3/8" drill/driver, DCF815 1/4" impact driver, (2) 12V MAX\* Li-Ion batteries, fast charger, (2) belt hooks, contractor bag

**DEWALT**



## DCK290L2 20V MAX 3.0 AH CORDLESS HAMMERDRILL / IMPACT DRIVER COMBO KIT

**Sku:**5132584

**Includes:** DCD985 1/2" Hammerdrill, DCF885 1/4" impact driver, (2) 20V MAX\* lithium ion 3.0 Ah battery packs, fast charger, 360° side handle, belt hook, contractor bag

**PORTER-CABLE**



## PCL212IDC-2 12V MAX COMPACT LITHIUM 2-TOOL KIT DRILL / IMPACT

**Sku:**1182731

**Includes:** PCL120DD drill/driver, PCL120ID hex impact driver, (2) PCL12BLX 12V lithium ion batteries, (1) PCL12C 12V 30 min. charger, (2) belt hooks, (1) PH #2 screwdriving bit, (1) double-ended screwdriving bit, (1) storage bag

**DEWALT**



## DCK491L2 20V MAX LI-ION 4-TOOL COMBO KIT (HD, REC, CIRC & LIGHT) 3.0AH

**Sku:**5132401

**Includes:** DCD985 1/2" hammerdrill, DCS381 reciprocating saw, DCS393 6 1/2" circular saw, DCL040 LED work light, (2) 20V MAX\* lithium ion 3.0 Ah battery packs, fast charger, 360° side handle, carbide tipped bade, contractor bag

**DEWALT**



## DCK590L2 20V MAX LI-ION 5-TOOL COMBO KIT 3.0AH

**Sku:**5132410

**Includes:** DCD985 1/2" hammerdrill, DCS381 reciprocating saw, DCF885 1/4" impact driver, DCS393 6 1/2" circular saw, DCL040 LED work light, (2) 20V MAX\* lithium ion 3.0 Ah battery packs, fast charger, 360° side handle, belt hook, carbide tipped blade, contractor bag

**DEWALT**



## DCK655X DEWALT 18V 6 TOOL KIT W/BAG

**Sku:**7223757

**Includes:** DCD950 18V XRP™ 1/2" hammerdrill, DC390 18V 6 1/2" circular saw, DC385 18V reciprocating saw, DC825 18V 1/4" impact driver, DC411 18V cut-off tool, DW919 18V flexible floodlight, (2) 18V XRP™ batteries, 1 hour charger, 360° side handle, carbide tipped blade, type 1 guard and wheel, wrench, backing flange, 2-position side handle, contractor bag

**DEWALT**



## DCK292L2 20V MAX LI-ION HAMMER DRILL & RECIP COMBO KIT 3.0AH

**Sku:**5132398

**Includes:** DCD985 1/2" hammerdrill, DCS380 reciprocating saw, (2) 20V MAX\* lithium ion 3.0 Ah battery packs, fast charger, 360° side handle, contractor bag



# Power Tools, Cordless Tool Combo Kits



## 2691-22 M18 CORDLESS COMBO KIT DRILL/IMPACT

Sku:1131192

**Includes:** (1) M18™ compact 1/2" drill driver (2606-20), (1) M18™ 1/4" hex impact driver (2656-20), (2) M18™ REDLITHIUM™ compact battery (48-11-1815), (1) M18™ & M12™ multi-voltage charger (48-59-1812), (1) contractor bag



## 2696-24 M18 CORDLESS 4-TOOL COMBO KIT

Sku:1131184

**Includes:** (1) M18™ compact 1/2" hammer drill/driver (2607-20), (1) M18™ SAWZALL® recip saw (2620-20), (1) M18™ 1/4" hex impact driver (2656-20), (1) M18™ LED work light (2735-20), (2) M18™ REDLITHIUM™ XC extended capacity battery (48-11-1828), (1) M18™ & M12™ multi-voltage charger (48-59-1812), (1) contractor bag



## CLPK232-181 18V 2-TOOL KIT W/COMPACT TOUGH DRILL & IMPACT DRIVER

• Tool weight: 11.4 lbs • Battery size: 18V • Chuck size: 1/2"  
• Sku:9916385



## DCK211S2 DEWALT 12V MAX CORDLESS DRILL / IMPACT DRIVER COMBO KIT

• Tool weight: 7.8 lbs • Battery size: 12V  
• Chuck size: 3/8" • Speed: 0-2450 RPM  
• Sku:5131855

# Power Tools, Oscillating Multi Tools



## RK5141K ROCKWELL 3.0A UNIVERSAL SONICRAFTER W/ HYPER-LOCK KIT

• Tool weight: 3.3 • Motor size: 3 AMP • Speed: 20,000 OPM • Sku:7106068



## FMM350Q START (R) MULTI-MASTER QUICK-IN TOOL W/BAG & ACC. (FMM250 START, START+)

• Tool weight: 6.7 • Motor size: 3 AMP • Speed: 11,000 to 21,000 OPM  
• Sku:4070844



## FMM350Q TOP KIT (PLUS MULTI-MASTER TOP PLUS KIT)

• Tool weight: 12 • Motor size: 3 AMP  
• Sku:4071182



## PCE605K 3AMP CORDED OSCILLATING MULTI-TOOL KIT W/ 31 ACCESSORIES (PC250MTK 2.5AMP)

• Tool weight: 6.6 • Motor size: 3 AMP  
• Sku:1183699



## SS5120 SHOPSERIES 2.3A UNIVERSAL SONICRAFTER KIT

• Tool weight: 2.9 • Motor size: 2.3 AMP  
• Sku:7106076



## MM30-01 DREMEL 2.5AMP MULTI-MAX OSCILLATING TOOL KIT (6300-01,-05,MM20-01,-03)

• Tool weight: 5.5 • Motor size: 2.5 AMP • Speed: 23,000 OPM  
• Sku:9915788



## MX30EC-21 QUICK CHANGE MULTI-X OSCILLATING TOOL KIT (MX25EC-21)

• Tool weight: 6.7 • Motor size: 3 AMP  
• Speed: 10,000 to 21,000 OPM  
• Sku:9916369



## DWE315K OSCILLATING MULTI-TOOL KIT

• Tool weight: 7.3 • Motor size: 3 AMP  
• Speed: 22,000 OPM • Sku:5133114



## MX30EK-33 QUICK CHANGE MULTI-X OSCILLATING TOOL KIT (MX25EK-33)

• Tool weight: 6.7 • Motor size: 3 AMP  
• Speed: 10,000 to 21,000 OPM  
• Sku:9916377



## RK5131K ROCKWELL 3.5A 4DEG SONICRAFTER F30 - 32 PC KIT

• Tool weight: 3.6 • Motor size: 2.5 AMP  
• Speed: 20,000 OPM  
• Sku:7106050

## Power Tools, Oscillating Multi Tools

**BOSCH**



### PS50-2A BOSCH 12V LITHEON MULTI-X STANDARD KIT

- Tool weight: 8.6 • Motor size: 12V
- Speed: 5,000 to 20,000 OPM
- Sku:9915559

**MILWAUKEE**



### 2426-22 M12 MULTI-TOOL KIT INCLUDES 2 BATTERIES, CHARGER & CASE

- Tool weight: 5.6 • Motor size: 12V
- Speed: 20,000 OPM • Sku:1125958

**PORTER-CABLE**



### GMT25T VS 2.5A OSCILLATING TOOL W/QUICK CHANGE

- Tool weight: 3.2 lbs • Motor size: 2.5 AMP • Speed: 15,000-22,000 OPM
- Sku:7114061

## Power Tools, Routers

**PORTER-CABLE**



### 690LR 1-3/4 HP LEVER RELEASE ROUTER 11 AMP (690LRP ANNIVERSARY EDITION)

- Tool weight: 8 • Motor size: 11 AMP
- Speed: 27,500 RPM • Sku:1171691

**BLACK & DECKER**



### RP250 2 HP VARIABLE SPEED PLUNGE ROUTER

- Tool weight: 10.9 • Motor size: 10 AMP
- Speed: 8,000 to 27,000 RPM
- Sku:5130271

**BOSCH**



### 1617EVS BOSCH 2.25 HP FIXED BASE ROUTER VARIABLE SPEED H. D. MAGNESIUM BASE

- Tool weight: 10.2 • Motor size: 12 AMP • Speed: 8,000 to 25,000 RPM
- Sku:9913092

**BOSCH**



### MRF23EVS 2.3HP ELECTRONIC VS FIXED-BASE ROUTER W/ TRIGGER CONTROL

- Tool weight: 12.25 • Motor size: 15 AMP • Speed: 10,000 to 25,000 RPM
- Sku:9916521

**DEWALT**



### DWP611 1.25HP MAX TORQUE VARIABLE SPEED COMPACT ROUTER

- Tool weight: 4.1 • Motor size: 7 AMP
- Speed: 16,000 to 27,000 RPM
- Sku:5132011

**BOSCH**



### MRP23EVS 2.3HP ELECTRONIC VS PLUNGE-BASE ROUTER W/TRIGGER CONTROL

- Tool weight: 16 • Motor size: 15 AMP
- Speed: 10,000 to 25,000 RPM
- Sku:9916539

**BOSCH**



### 1617EVSPK BOSCH 2.25HP ELECTRONIC VS PLUNGE & FIXED-BASE ROUTER KIT

- Tool weight: 19.5 • Motor size: 12 AMP • Speed: 8,000 to 25,000 RPM
- Sku:6537227

**DEWALT**



### DWP611PK 1.25HP MAX TORQUE VARIABLE SPEED COMPACT ROUTER FIXED/PLUNGE COMBO KIT

- Tool weight: 10 • Motor size: 7 AMP
- Speed: 16,000 to 27,000 RPM
- Sku:5132029

## Power Tools, Router Kits

## Power Tools, Trim Router

**BOSCH**



### PR20EVSK BOSCH ELECTRONIC VARIABLE SPEED PALM ROUTER KIT

- Tool weight: 3.3 • Motor size: 5.6 AMP
- Speed: 15,000 to 35,000 • Sku:9912100



**PORTER-CABLE**



### PCE6430 LAMINATE TRIM ROUTER

- Tool weight: 5 • Motor size: 4.5 AMP
- Speed: 31,000 RPM • Sku:1170368



## Power Tools, Hand Planers

Makita



Pro's  
Choice

### KP0800K 3-1/4" PLANER KIT W/CASE

- Tool weight: 5.7 • Motor size: 6.5 AMP
- Cut Size: 3-1/4" • Sku:6111009



BOSCH



### 1594K BOSCH 3-1/4" X 3/32" PLANER KIT W/BEVEL GUIDE

- Tool weight: 13.8 • Motor size: 6 AMP • Cut size: 3-1/4" • Sku:6521975

DEWALT



### D26677K DEWALT 3-1/4" PORTABLE HAND PLANER KIT

- Tool weight: 10 • Motor size: 5.5 AMP • Cut size: 3-1/4" • Sku:5131944

PORTER-CABLE



### PC60THPK 6.0AMP HAND PLANER

- Tool weight: 13.2 • Motor size: 6 AMP
- Cut size: 3-1/4" • Sku:1183303

PORTER-CABLE



### 557 DELUXE PLATE JOINER KIT

- Tool weight: 7.5 • Motor size: 7.5 AMP
- Cut size: 3-3/8" • Sku:1171666

## Power Tools, Planers

DEWALT



### DW734 DEWALT 12 1/2" PORTABLE THICKNESS PLANER W/ 3 KNIFE CUTTER HEAD

- Tool weight: 80 • Motor size: 15 AMP
- Cut size: 12-1/2" • Sku:5148618

DEWALT



### DW735 DEWALT 13" PORTABLE THICKNESS PLANER W/3 KNIFE CUTTER HEAD-S SPD

- Tool weight: 91.8 • Motor size: 15 AMP
- Cut size: 13" • Sku:5130174

DEWALT



### DW682K DEWALT PLATE JOINER KIT

- Tool weight: 6.6 • Motor size: 6.5 AMP
- Sku:1308793

## Power Tools, Sander/Polishers

Makita



### 9227C 7" ELECTRIC SANDER - POLISHER

- Tool weight: 6.6 • Motor size: 10 AMP
- Pad size: 7" • Sku:6455093

Makita



### 9227CX3 7" POLISHER / SANDER 10AMP 600-3000 RPM W/PAD

- Tool weight: 6.8 • Motor size: 10 AMP
- Pad size: 7" • Sku:1004425

THE HOME DEPOT



### RK9011 OSCILLATING SPINDLE SANDER

- Motor size: 3.5AMP • Sku:7100485

## Power Tools, Spindle Sander



Pro's Choice

## 1375A BOSCH 4-1/2" SMALL ANGLE GRINDER 6 AMPS

- Tool weight: 5.4 • Motor size: 6 AMP
- Wheel size: 4-1/2" • Sku:7266995



Pro's Choice

## GA4530 4-1/2" ANGLE GRINDER

- Tool weight: 4 • Motor size: 6 AMP
- Wheel size: 4-1/2" • Sku:6111106



## DWE4011 DEWALT 4-1/2" SMALL ANGLE GRINDER W/ONE-TOUCH GUARD

- Tool weight: 5.6 • Motor size: 7 AMP
- Wheel size: 4-1/2" • Sku:0773778



## 9557PB 4-1/2" ANGLE GRINDER

- Tool weight: 4.5 • Motor size: 7.5 AMP
- Wheel size: 4-1/2" • Sku:1004646



## PC60TAG 6.0 AMP SMALL ANGLE GRINDER

- Tool weight: 4.1 • Motor size: 6 AMP
- Wheel size: 4-1/2" • Sku:1182706



## AG40-85P 4-1/2" ANGLE GRINDER W/NO-LOCK-ON PADDLE SWITCH

- Tool weight: 6.3 • Motor size: 8.5 AMP
- Wheel size: 4-1/2" • Sku:9910000



## D28402 DEWALT 4-1/2" (115MM) SMALL ANGLE GRINDER

- Tool weight: 6.2 • Motor size: 10 AMP
- Wheel size: 4-1/2" • Sku:1314165



## D28402K DEWALT 4-1/2" 10,000 RPM MINI-GRINDER (D28402, DW402K)

- Tool weight: 4.6 • Motor size: 10 AMP
- Wheel size: 4-1/2" • Sku:1315013



## G950 8.5AMP 4-1/2" ANGLE GRINDER (G750 4" 5.5AMP, G850 6.5AMP)

- Tool weight: 7 • Motor size: 8.5 AMP
- Wheel size: 4-1/2" • Sku:5131049



## G12SS 4-1/2" DISC GRINDER 5.0 AMP

- Tool weight: 3.1 • Motor size: 5 AMP
- Wheel size: 4-1/2" • Sku:1447882



## 6146-30 4.5" 10A SMALL ANGLE GRINDER - PADDLE W/LOCK-ON

- Tool weight: 8.2 • Motor size: 11 AMP
- Wheel size: 4-1/2" • Sku:1170040



## GA7021 7" ANGLE GRINDER

- Tool weight: 12.2 • Motor size: 15 AMP
- Wheel size: 7" • Sku:1003712



## 7750 5.5AMP 4-1/2" SMALL ANGLE GRINDER

- Tool weight: 4.8 • Motor size: 5.5 AMP
- Wheel size: 4-1/2" • Sku:5141681



## 9296-01 PADDLE SWITCH SKIL 4-1/2" GRINDER, ANGLE

- Tool weight: 6.2 • Motor size: 7.5 AMP
- Wheel size: 4-1/2" • Sku:9916733



## 6130-33 4-1/2" SMALL ANGLE GRINDER

- Tool weight: 3.5 • Motor size: 7 AMP
- Wheel size: 4-1/2" • Sku:1129830



## GAG645 4-1/2" ANGLE GRINDER

- Tool weight: 5.1 lbs • Motor size: 6 AMP
- Wheel size: 4-1/2" • Sku:7113889



## Power Tools, Bench Grinders

BLACK & DECKER



### RK7867 1/2HP 6" BENCH GRINDER

- Motor size: 2 AMP • Wheel size: 6"
- Sku:7100167

BLACK & DECKER



### GBG600L 6" BENCH GRINDER W/ LIGHTS

- Motor size: 120V • Wheel size: 6"
- Sku:7113897

BLACK & DECKER



### RK7866 4.3AMP BELT / DISC SANDER W/ 6" DISC & 36" BELT

- Motor size: 4.3AMP • Sku:7100175

## Power Tools, Disc Sanders

Makita



### GV5010 5" DISC SANDER

- Tool weight: 2.6 • Motor size: 4.2 AMP
- Pad size: 5" • Sku:1082779

DEWALT



### DWE6401DS 5" VSR DISC SANDER W/DUST PORT

- Tool weight: 4.8 • Motor size: 6 AMP
- Pad size: 5" • Sku:5132550

## Power Tools, Belt Sanders

PORTER-CABLE



### 352VS 3"X21" VS BELT SANDER W/ DUST PICK-UP 8 AMP

- Tool weight: 10.8 • Motor size: 8 AMP
- Belt size: 3" x 21" • Sku:1171682

Makita



### 9903 3"X21" BELT SANDER DUSTLESS, AUTO TRACKING

- Tool weight: 9.5 • Motor size: 8.8 AMP
- Belt size: 3" x 21" • Sku:6111157

SKIL



### 7510-02 SKIL 120V 3"X18" BELT SANDER

- Tool weight: 7.5 • Motor size: 6 AMP
- Belt size: 3" x 18" • Sku:9915834

PORTER-CABLE



### 371K 2-1/2" X 14" COMPACT BELT SANDER

- Tool weight: 5 • Motor size: 5 AMP
- Belt size: 2-1/2" x 14"
- Sku:1178601

BLACK & DECKER



### DS321 DRAGSTER BELT SANDER

- Tool weight: 8.3 • Motor size: 7 AMP
- Belt size: 3" x 21" • Sku:7223722

## Power Tools, Finish Sanders

**Makita**



**BO4556K 1/4" FINISH SANDER**

- Tool weight: 2.4 • Motor size: 2 AMP
- Pad size: 1/4 sheet • **Sku:**1001507

**PORTER-CABLE**



**380 1/4 SHEET PALM GRIP FINISHING SANDER KIT**

- Tool weight: 3.6 • Motor size: 2 AMP
- Pad size: 1/4 sheet • **Sku:**1172522

**HITACHI**



**SV12SG 1/4 SHEET ORBITAL FINISHING SANDER**

- Tool weight: 2.4 • Motor size: 1.7 AMP • Pad size: 1/4 sheet
- **Sku:**1447751

**BLACK & DECKER**



**RC4151 2AMP 1/4 SHEET PALM SANDER**

- Tool weight: 3.3 • Motor size: 2 AMP
- Pad size: 1/4 sheet • **Sku:**7101333

**BLACK & DECKER**



**QS900 1/4 SHEET SANDER**

- Tool weight: 2.6 • Motor size: 2 AMP
- Pad size: 1/4 sheet • **Sku:**5141664

**BOSCH**



**1297DK BOSCH 1/4 SHEET SANDER**

- Tool weight: 5.2 • Motor size: 2 AMP
- Pad size: 1/4 sheet • **Sku:**6537235

**MILWAUKEE**



**6020-21 1/4 SHEET PALM SANDER**

- Tool weight: 7.5 • Motor size: 3 AMP
- Pad size: 1/4 sheet • **Sku:**1129813

**DEWALT**



**D26441K DEWALT 1/4 SHEET PALM GRIP SANDER W/DUST EXTRACTION**

- Tool weight: 6.5 • Motor size: 2.4 AMP
- Pad size: 1/4 sheet • **Sku:**1308939

## Power Tools, Random Orbit Sanders

**Makita**



**Best Seller**



**BO5030K 5" RANDOM ORBIT SANDER W/CASE**

- Tool weight: 3.3 • Motor size: 3 AMP
- Pad size: 5" • **Sku:**1002341

**DEWALT**



**Pro's Choice**



**D26451K DEWALT 5" RANDOM ORBIT SANDER KIT**

- Tool weight: 3.4 • Motor size: 3 AMP
- Pad size: 5" • **Sku:**5120195





# Power Tools, Random Orbit Sanders

PORTER-CABLE



## 382 5" RANDOM ORBIT SANDER W/ DUST PICK-UP

• Tool weight: 3.6 • Motor size: 1.9 AMP  
• Pad size: 5" • Sku:1178661

BOSCH



## 3725DEVS BOSCH 5" DUTY RANDOM ORBIT SANDER SUPER

• Tool weight: 6.3 • Motor size: 3.3 AMP  
• Pad size: 5" • Sku:9919651

BOSCH



## ROS20VSK BOSCH 5" VARIABLE SPEED RANDOM ORBIT SANDER KIT

• Tool weight: 7.8 • Motor size: 2.5 AMP  
• Pad size: 5" • Sku:9915206

BOSCH



## ROS10 BOSCH 5" PALM-GRIP RANDOM ORBIT SANDER

• Tool weight: 3.9 • Motor size: 2.5 AMP  
• Pad size: 5" • Sku:9915192

DEWALT



## D26453K DEWALT HEAVY DUTY 5" VS RANDOM ORBIT SANDER KIT

• Tool weight: 3.5 • Motor size: 3 AMP  
• Pad size: 5" • Sku:5141389

BLACK+DECKER



## RO410S 5" RANDOM ORBIT SANDER W/JUG HANDLE AND KIT BOX

• Tool weight: 2.7 • Motor size: 2.4 AMP  
• Pad size: 5" • Sku:5148464

PORTER-CABLE



## 7345 5" VS RANDOM ORBIT SANDER 4.5 AMP 2500-6800 OPM

• Tool weight: 5.5 • Motor size: 4.5 AMP  
• Pad size: 5" • Sku:6459692

Makita



## BO5041K VS D-HNDL RANDOM ORBIT SANDER-POLISHER KIT

• Tool weight: 3.1 • Motor size: 3 AMP  
• Pad size: 5" • Sku:1001671

BOSCH



## 3727DEVS BOSCH 6" RANDOM ORBIT SANDER SUPER DUTY

• Tool weight: 6.3 • Motor size: 3.3 AMP  
• Pad size: 6" • Sku:9919694

Makita



## BO5031K 5" RANDOM ORBIT SANDER VARIABLE SPEED

• Tool weight: 2.9 • Motor size: 3 AMP  
• Pad size: 5" • Sku:1003704

BLACK+DECKER



## MS800B MOUSE SANDER/POLISHER W/ ZONE TOUCH

• Tool weight: 2 • Motor size: .5 AMP  
• Sku:5141036

BLACK+DECKER



## RK4246K 2.8AMP RANDOM ORBITAL SANDER WITH CYCLONIC DUST / AIR SEPARATOR, BMC

• Tool weight: 3.1 • Motor size: 2.8 AMP  
• Pad size: 5" • Sku:7101171

BOSCH



## 1250DEVS BOSCH 6" RANDOM ORBIT SANDER W/ TURBO-ELECTRONIC VS

• Tool weight: 5.3 • Motor size: 6.5 AMP  
• Pad size: 6" • Sku:6537243

HITACHI



## SV13YB 5" RANDOM ORBITAL SANDER SINGLE SPEED

• Tool weight: 3 • Motor size: 2 AMP  
• Pad size: 5" • Sku:1447742

GENESIS



## GPS2303 PALM SANDER 1/4 SHEET

• Tool weight: 3.2 lbs • Motor size: 1.3 AMP  
• Pad size: 4-1/4" • Sku:7114079

GENESIS



## GSP1711 7" VARIABLE SPEED SANDER/POLISHER

• Tool weight: 10 lbs • Motor size: 120V  
• Sku:7114117



**0601B13110 BOSCH 10" PORTABLE TABLE SAW W/TS3000 GRAVITY RISE STAND**  
 • Motor size: 15 AMP • Blade size: 10"  
 • Sku:9914200



**GTS10SB 10" 15 AMP TABLE SAW W/STAND**  
 • Motor size: 15 AMP • Blade size: 10"  
 • Sku:7114044



**DWE7491RS 10" JOBSITE TABLE SAW 32 - 1/2" 82.5CM RIP CAPACITY & ROLLING STAND**  
 • Motor size: 15 AMP • Blade size: 10"  
 • Sku:5133190



**RK7240.1 13AMP 10" PORTABLE TABLE SAW W/LEG STAND**  
 • Motor size: 13 AMP • Blade size: 10"  
 • Sku:7100132



**GTS1031 BOSCH 10" PORTABLE TABLE SAW**  
 • Motor size: 15 AMP • Blade size: 10"  
 • Sku:9916423



**DW745 DEWALT 10" COMPACT JOB SITE TABLE SAW**  
 • Motor size: 15 AMP • Blade size: 10"  
 • Sku:5130387



**2705 10" TABLE SAW**  
 • Motor size: 15 AMP • Blade size: 10"  
 • Sku:1004417



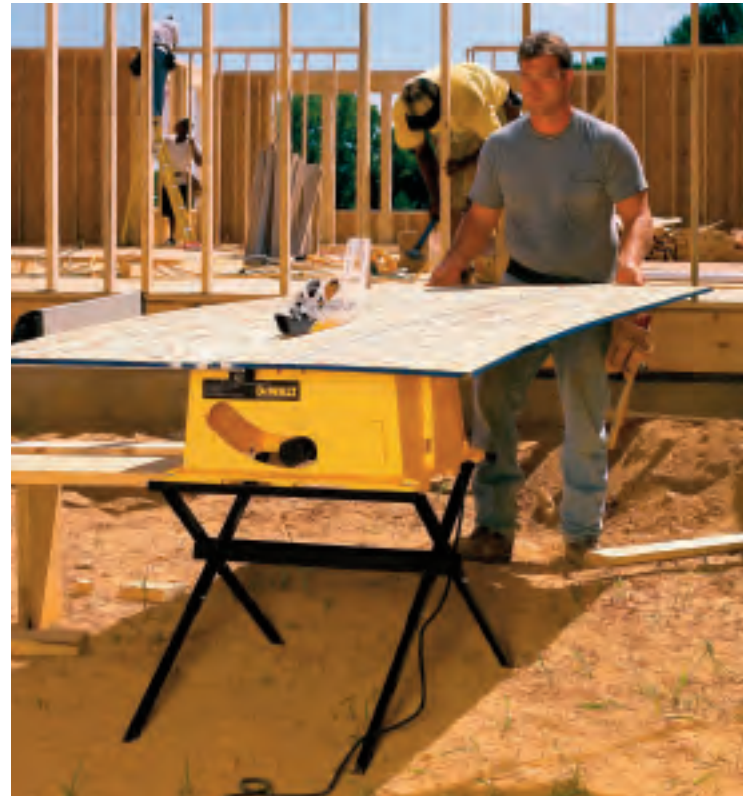
**DWE7490X 10" JOBSITE TABLE SAW W/SCISSOR STAND**  
 • Motor size: 15 AMP • Blade size: 10"  
 • Sku:5133131



**RK7241S 10" TABLE SAW W/ LASER**  
 • Motor size: 15 AMP • Blade size: 10"  
 • Sku:7102739



**DWE7480 10" COMPACT JOBSITE TABLE SAW W/SITE-PRO MODULAR GUARDING SYSTEM**  
 • Motor size: 15 AMP • Blade size: 10"  
 • Sku:5133122





## TABLE SAW Comparison Chart

Brand	Item # Model #	Blade Size	Amp	No-load Speed (RPM)	Table Size	Max Depth of Cut @ 90°	Max Depth of Cut @ 45°	Max Rip Capacity
<b>SKIL</b>	<b>9914200</b> (4100-09)	10"	15 Amp	3,650	21.5"x29.5"	3-1/8"	2-1/2"	25"
<b>ROSCOFF</b>	<b>7100132</b> (RK7240.1)	10"	13 Amp	4,500	26"x16"	3"	2-1/2"	12"
<b>DEWALT</b>	<b>5130387</b> (DW745)	10"	15 Amp	3,850	22.8"x23.5"	3-1/8"	2-1/4"	16"
<b>SKIL</b>	<b>9916423</b> (GTS1031)	10"	15 Amp	5,000	20"x22.5"	3-1/8"	1-1/2"	18"
<b>DEWALT</b>	<b>5133131</b> (DWE7490X)	10"	15 Amp	4,800	26.25"x22"	3-7/8"	2-1/4"	24"
<b>DEWALT</b>	<b>5133122</b> (DWE7480)	10"	15 Amp	4,800	26.5"x 26.75"	3-1/8"	2-1/4"	24-1/2"
<b>DEWALT</b>	<b>5133190</b> (DWE7491RS)	10"	15 Amp	4,800	26-3/8.5" x 21-7/8"	3-1/8"	2-1/2"	32-1/2"
<b>Makita</b>	<b>1004417</b> (2705)	10"	15 Amp	4,800	24-5/8" x 22-1/4"	3-9/16"	2-1/2"	25"
<b>ROSCOFF</b>	<b>7102739</b> (RK7241S)	10"	15 Amp	4,800	28.5"x19"	3-9/16"	2-9/16"	36-3/4"
<b>Greenlee</b>	<b>7114044</b> (GTS10SB)	10"	15 Amp	4,800	24"x20"	3"	2-1/2"	24"

### Power Tools, Table Saw Accessories

**freud**



**D1040X DIABLO 10" X 40T GEN-  
ERAL PURPOSE BLADE**

SKU:1354795

**IRWIN**



**14070 10" 40T MARATHON  
FRAMING/RIPPING CIRCULAR  
SAW BLADE**

SKU:6151647

**freud**



**D1024X DIABLO 10" X 24T  
RIPPING BLADE CARDED**

SKU:6998861

HITACHI



**C8FSE 8-1/2" SLIDING COMPOUND MITER SAW**

• Motor size: 9.2 AMP • Blade size: 8-1/2"  
• Sku:1442040

HITACHI



**C10FCE2 10" COMPOUND MITER SAW**

• Motor size: 15 AMP • Blade size: 10"  
• Sku:1420682

**DEWALT**



**DWS780 DEWALT 12" DUAL BEVEL SLIDING COMPOUND MITER SAW**

• Motor size: 15 AMP • Blade size: 12"  
• Sku:5132185

HITACHI



**C10FSHPS 10" LASER GUIDED SLIDING MITER SAW**

• Motor size: 12 AMP • Blade size: 10"  
• Sku:1420135

**BOSCH**



**GCM12SD BOSCH 12" DUAL BEVEL GLIDE MITER SAW**

• Motor size: 15 AMP • Blade size: 12"  
• Sku:9916318

HITACHI



**C10FSBP4 10" DUAL COMPOUND SLIDE MITER SAW**

• Motor size: 12 AMP • Blade size: 10"  
• Sku:1420313

HITACHI



**C8FSHE 8-1/2" SLIDING COMPOUND MITER SAW W/ LASER AND LIGHT**

• Motor size: 9.2 AMP • Blade size: 8-1/2"  
• Sku:1442066

**Makita**



**LS1016L 10" DUAL COMPOUND SLIDE MITER SAW W/LASER**

• Motor size: 15 AMP • Blade size: 10"  
• Sku:1003518

**DEWALT**



**DW717 DEWALT 10" DOUBLE-BEVEL SLIDING COMPOUND MITER SAW**

• Motor size: 15 AMP • Blade size: 10"  
• Sku:5141371

**DEWALT**



**DW715 DEWALT 12" COMPOUND MITER SAW**

• Motor size: 15 AMP • Blade size: 12"  
• Sku:5140838

HITACHI



**C12RSH 12" SLIDE COMPOUND MITER SAW**

• Motor size: 15 AMP • Blade size: 12"  
• Sku:1421255

**DEWALT**



**DW713 DEWALT 10" (254MM) SINGLE BEVEL MITER SAW**

• Motor size: 15 AMP • Blade size: 12"  
• Sku:6509029

**DEWALT**



**RK7135 14AMP 10" COMPOUND MITER SAW W/EXT SUPPORTS & MATERIAL CLAMP**

• Motor size: 14 AMP • Blade size: 10"  
• Sku:7100116

**DEWALT**



**DW716 DEWALT 12" DBL BEVEL COMPOUND MITER SAW**

• Motor size: 15 AMP • Blade size: 12"  
• Sku:5140897

**BOSCH**



**5312 BOSCH 12" DUAL BEVEL SLIDING MITER SAW**

• Motor size: 15 AMP • Blade size: 12"  
• Sku:6535593

**Makita**



**LS1221 12" COMPOUND MITER SAW 15 AMP**

• Motor size: 15 AMP • Blade size: 12"  
• Sku:1001582

**DEWALT**



**GMS1015LC 10" COMPOUND MITER SAW W/LASER**

• Motor size: 15 AMP • Blade size: 10"  
• Sku:7113986

**DEWALT**



**GMSDR1015LC 10" SLIDING COMPOUND MITER SAW W/LASER**

• Motor size: 15 AMP • Blade size: 10"  
• Sku:7113994



## MITER SAW Comparison Chart

Brand	Item #	Blade Size	Amp	No Load Speed (RPM)	Max Bevel Range	Miter Range
<b>HITACHI</b>	<b>1442040</b> (C8FSE)	8-1/2"	9.2 Amp	5,500 RPM	0-48° (L) 0-5° (R)	0-57° (R) 0-45° (L)
<b>HITACHI</b>	<b>1420682</b> (C10FCE2)	10"	15 Amp	5,000 RPM	0-45° (L)	0-52° (L&R)
<b>DEWALT</b>	<b>5132185</b> (DWS780)	12"	15 Amp	3,800 RPM	0-49° (L&R)	0-60° (R) 0-50° (L)
<b>HITACHI</b>	<b>1420135</b> (C10FSHPS)	10"	12 Amp	3,800 RPM	0-45° (L&R)	0-57° (R) 0-45° (L)
<b>SKIL</b>	<b>9916318</b> (GCM12SD)	12"	15 Amp	3,800 RPM	0-48° (L&R)	0-52° (R) 0-60° (L)
<b>HITACHI</b>	<b>1420313</b> (C10FSBP4)	10"	12 Amp	3,800 RPM	0-45° (L&R)	0-57° (R) 0-45° (L)
<b>Makita</b>	<b>1003518</b> (LS1016L)	10"	15 Amp	3,200 RPM	0-45° (L&R)	0-52° (L) 0-60° (R)
<b>DEWALT</b>	<b>5140838</b> (DW715)	12"	15 Amp	4,000 RPM	0-48° (L) 0-5° (R)	0-50° (L&R)
<b>HITACHI</b>	<b>1442066</b> (C8FSHE)	8-1/2"	9.2 Amp	5,500 RPM	0-48° (L) 0-5° (R)	0-57° (R) 0-45° (L)
<b>DEWALT</b>	<b>6509029</b> (DW713)	12"	15 Amp	5,000 RPM	0-48° (L&R)	0-50° (L&R)

## Power Tools, Miter Saw Accessories

**freud**



**D1040A DIABLO 10" X 40T  
GENERAL PURPOSE/MITER  
BLADE**  
Sku:1354256

**freud**



**D1060X DIABLO 10" X 60T FINE  
FINISH BLADE CARVED**  
Sku:6998941

**freud**



**D1244X DIABLO 12" X 44T  
GENERAL PURPOSE/MITER  
BLADE CARVED**  
Sku:6999026

**freud**



**D1280X DIABLO 12" X 80T FINE  
FINISH BLADE CARVED**  
Sku:6999069

## Power Tools, Band Saw

USE POWER TOOL



### RK7453 2.5AMP 9" BAND SAW W/59-1/2" BLADE & WORK LIGHT

- Motor size: 2.5AMP • Blade size: 59-1/2" • Cut capacity: 3-1/8"
- Sku:7100159

Milwaukee



### 6232-21 10.5 AMP 4-7/8" X 4-7/8" DEEP CUT PORTABLE BAND SAW W/ CASE

- Motor size: 11AMP • Blade size: 44-7/8" • Cut capacity: 5" • Sku:1121804

USE POWER TOOL



### RK7321 BLADERUNNER W/WALL MOUNT

- Motor size: 5.5 AMP • Blade size: t-shank jigsaw blades • Cut capacity: 1-1/2" (wood), 1-1/4" (pvc), 3/8" (aluminum), 1/8" (steel), 3/8" (tile)
- Sku:7102500

USE POWER TOOL



### RK7315 16" VARIABLE SPEED SCROLL SAW

- Motor size: 1.2AMP • Blade size: 5"
- Cut capacity: 16" (throat depth), 2-1/2" (cutting depth) • Sku:7100141

## Power Tools, Cut Out Tools

BOSCH



### SS355-10 ROTO SAW SPIRAL SAW KIT

- Tool weight: 3.1 • Motor size: 5.5 AMP
- Speed: 30,000 RPM • Sku:1371550

BOSCH



### SS560VSC-30 ROTOZIP ROTO-SAW

- Tool weight: 5.1 • Motor size: 120V
- Speed: 30,000 RPM • Sku:1373226

DEWALT



### DW660 DEWALT DRYWALL CUT OUT TOOL

- Tool weight: 3.2 • Motor size: 5 AMP
- Speed: 30,000 RPM • Sku:5151252

BLACK & DECKER



### DC411B DEWALT 4-1/2" (114MM) 18V CORDLESS CUT-OFF TOOL (TOOL ONLY)

- Tool weight: 4.6 • Motor size: 18V
- Speed: 6,500 RPM • Sku:5131731

## Power Tools, Tile Saw

MKO  
MK Diamond Products, Inc.



### 157222 MK170 WET CUTTING TILE SAW

- Motor size: 1/2 HP • Blade size: 7"
- Cut capacity: 2" • Sku:1373137

MKO  
MK Diamond Products, Inc.



### 158252 MK-145 4-1/2" WET CUTTING TILE SAW

- Motor size: 1/2 HP • Blade size: 4.5"
- Cut capacity: 1" • Sku:1373099

MKO  
MK Diamond Products, Inc.



### 160028 MK377 7" WET CUTTING TILE SAW

- Motor size: 1/2 HP • Blade size: 7"
- Cut capacity: 2" • Sku:1397508

## Power Tools, Chop Saw

Makita



### 2414NBX 14" PORTABLE CUT-OFF SAW

- Motor size: 15AMP • Blade size: 14"
- Cut capacity: 4-1/2" • Sku:6110037

HITACHI



### CC14SFS 14" HIGH SPEED CUT-OFF MACHINE

- Motor size: 15AMP • Blade size: 14"
- Cut capacity: 5" • Sku:1447769



## Power Tools, Cement Shears

**DeWALT**



### D28605 DEWALT VARIABLE SPEED 1/2" CEMENT SHEAR

- Tool weight: 4.5 • Motor size: 6.5AMP
- Cut capacity: 1/2" fiber cement board
- Sku:6459650

**PacTool**



### SS404 SNAPPER SHEAR, ELECTRIC 5/16" CAPACITY

- Tool weight: 6 • Motor size: 6.5AMP
- Cut capacity: 5/16" fiber cement board
- Sku:7111711

**PacTool**



### SS204 DIY SIDING SHEAR, ELECTRIC 5/16" CAPACITY

- Tool weight: 1 • Motor size: 4.8AMP
- Cut capacity: 5/16" fiber cement board
- Sku:7111703

## Power Tools, Metal Shears

**PacTool**



### SS201 SHEET METAL SHEAR, ELECTRIC 18 GAUGE

- Tool weight: 5.6 • Motor size: 4.8AMP
- Cut capacity: 18ga sheet metal
- Sku:7111720

**Makita**



### 2470-21 M12 CORDLESS PVC SHEAR KIT

- Tool weight: 4.7 • Motor size: 12V
- Cut capacity: 2" schedule 40 PVC
- Sku:1123611

## Hand Tools

**Estwing**



### E3-20S 20 OZ STRAIGHT CLAW HAMMER W/NYLON-VINYL GRIP

Forged one-piece solid steel construction. **Sku:6120148**

**Estwing**



### E3-16S 16 OZ STRAIGHT CLAW HAMMER W/NYLON-VINYL GRIP

Forged one-piece solid steel construction. **Sku:6120130**

**STANLEY**



### 10-099 RETRACTABLE UTILITY KNIFE

Patented interlocking nose. 3-position blade. Blade storage in handle. **Sku:5050910**

**STANLEY**



### 10-788 CONTRACTOR GRADE QUICK BLADE CHANGE RETRACTABLE UTILITY KNIFE

Blade changes with push of a button. Curved handle for comfort. Integrated string cutter and retractable slide. **Sku:5064295**

**STANLEY**



### 11-921 1992 UTILITY KNIFE BLADE

Engineered for general-purpose cutting. **Sku:5054061**

**STANLEY**



### 11-921A 1992 100 PK UTILITY KNIFE BLADES W/DISPENSER

Engineered for general-purpose cutting. **Sku:5054052**

**STANLEY**



**33-425 1"X25' YELLOW POWER-LOCK TAPE RULE**

7' standout. Blade coated with Mylar® polyester film for added durability. **Sku:5056187**

**STANLEY**



**33-725 25' FATMAX TAPE RULE**

11' standout. Blade coated with Mylar® polyester film for added durability. **Sku:5064171**

**STANLEY**



**OPEN REEL FIBERGLASS LONG TAPE FRACTIONAL/DECIMAL**

High-impact ABS case for rugged conditions. PVS blades allows tape to be wound wet and easily cleaned. **34-790 100' Sku:5027501**  
**34-793 200' Sku:5027519**

**IRWIN**



**64310 100' STRAIT-LINE FAST RETRIEVE CHALK LINE REEL**

For stable anchoring, allows line to snap at various angles. **Sku:6150004**

**STANLEY**



**43-511 MAGNETIC HIGH IMPACT TORPEDO LEVEL**

Bi-material body with rubber ends. Water resistant. **Sku:5055946**

**STANLEY**



**43-524 24" FAT MAX LEVEL**

Single-piece, aluminum box-beam structure increases durability and accuracy. **Sku:5046483**

**STANLEY**



**43-548 48" FAT MAX LEVEL**

Single-piece, aluminum box-beam structure increases durability and accuracy. **Sku:5046599**

**STABILA**



**25100 MAGNETIC DIE CAST TORPEDO LEVEL**

Heavy-duty, die-cast frame. Level accuracy guaranteed for life. **Sku:7039921**

**STABILA**



**37424 2' TYPE 196 BOX FRAME LEVEL**

Crystal clear vials are readable in any direction. **Sku:7263104**

**STABILA**



**37448 4' TYPE 196 BOX FRAME LEVEL**

Crystal clear vials are readable in any direction. **Sku:7263180**

**IRWIN**



**64902 8 OZ RED CHALK**

Weatherproof color leaves lines that remain visible after weeks of wear and tear on the worksite. **Sku:0524328**

**IRWIN**



**64901 8 OZ BLUE CHALK**

For temporary use. Paint over or wash off. **Sku:0524310**

**TAJIMA**



**CR202B-P 100' BLUE CHALK-RITE II GEAR DRIVE ULTRA THIN FAST WIND ALUM SNAP-LINE**

5-gear fast-wind chalk snap line, die-cast aluminum case, 0.5 mm braided nylon/polyester line. **Sku:1390520**

**TAJIMA**



**PLC2-B300 10.5OZ BLUE CHALK-RITE ULTRA-FINE CHALK WITH EASY-FILL NOZZLE**

Micro-fine particle chalk for clean, consistent marking lines. **Sku:1390554**

**TAJIMA**



**PLC2-R300 10.5OZ RED CHALK-RITE ULTRA-FINE CHALK WITH EASY-FILL NOZZLE**

Micro-fine particle chalk for clean, consistent marking lines. **Sku:1390562**

**BOSCH**



**GLM50 BOSCH 165' LASER DISTANCE MEASURER**

Measures distances of up to 165' with up to 1/16" accuracy. Includes carrying case. **Sku:9916806**



B JOHNSON



**J236 36" ALUMINUM STRAIGHT EDGE YARDSTICK**  
Durable 1-1/8" wide extruded aluminum.  
**Sku:**1125796

BORA



**540950 50" BORA CLAMP EDGE**  
Straight-edge tool guide with integrated clamps. **Sku:**7102551

PLS



**PLS-60521 PLS180 TOOL**  
Fast, accurate and portable. 100' working range. Accuracy of 1/8".  
**Sku:**7045026

BOSCH



**GPL3 BOSCH 3-POINT ALIGNMENT SELF LEVELED LASER**  
Plumb and level point projection. Patented diamond-cut beam splitter. Smart pendulum leveling system.  
**Sku:**9916202

## Jobsite Clean Up

shop-vac



**965-06-00 ULTRA PLUS PRO 6GAL WET/DRY VAC 3 PHP W/BONUS KIT**  
Blower Feature, Super Quiet, 6-ft cord.  
**Sku:**1503901  
**Includes:** 1-1/4" Diameter x 8ft Lock-On Hose, (3) 1-1/4" Extension Wands, 10" Wet/Dry Nozzle, Gulper Nozzle, Crevice Tool and Cartridge Filter, Disposable Filter Bag

shop-vac



**955-16-00 16 GAL ULTRA PRO VAC 6 PHP W/2-1/2" ACCESS**  
Blower Feature, Super Quiet, 18-ft cord.  
**Sku:**1507711  
**Includes:** 2-1/2" Diameter x 8' Lock-On Hose, (2) 2-1/2" Extension Wands, 14" Floor Nozzle, 8in Utility Nozzle, Crevice Tool, Concentrator Nozzle, Elbow Grip (Accessories) and Cartridge Filter, Disposable Filter Bag (Filters)

MILWAUKEE



**542015 MAGNET CADDY W/ WHEELS**  
18" contractor grade magnetic sweeper with quick release. **Sku:**1444468

70-RMS



**70-RMS 30" ROLLING MAGNETIC SWEEPER**  
Comes with big 7" diameter wheels and stainless steel magnetic box for easy clean-up. • **Sku:**0773662

70-MS



**70-MS 10" HAND HELD MAGNETIC SWEEPER**  
Powerful magnets, stainless steel box, spring loaded quick release.  
**Sku:**0320463

qual-craft



**2560 SHINGLE REMOVER LONG HANDLE 54"**  
General purpose shingle remover. Pulls up to 160 nails. **Sku:**1175238

qual-craft



**2563 SHINGLE REMOVER SHORT HANDLE 22-1/2"**  
For flashing, siding and tight areas.  
**Sku:**1175009

AMES TRUE TEMPER



**BP8 8 CU FT 2 WHEEL POLY CONTRACTOR WHEELBARROW**  
16" wheel assembly with pneumatic tubed 2-ply tire. **Sku:**1340077

AMES TRUE TEMPER



**M11T22 5-3/4 CU FT STEEL CONTRACTOR WHEELBARROW W/LEG STBLR**  
16" wheel assembly with pneumatic tubed 2-ply tire. **Sku:**4430671

AMES TRUE TEMPER



**MP575T22 6 CU FT BLUE POLY JACKSON WHEELBARROW**  
16" wheel assembly with pneumatic tubed 2-ply tire. **Sku:**1324004

# Pressure Washers

**KARCHER**



**K227 CCK 1600 PSI UNIVERSAL MOTOR ELECTRIC PRESSURE WASHER**

• PSI: 1600 • GMP: 1.5 GPM • Engine Type: Electric • Sku:7112882

**KARCHER**



**K3.350 1800 PSI UNIVERSAL MOTOR ELECTRIC PRESSURE WASHER(-701.0)**

• PSI: 1800 • GMP: 1.5 GPM • Engine Type: Electric • Sku:7112891

**KARCHER**



**G2500DC 2500 PSI 2.4 GPM GAS PRESSURE WASHER**

• PSI: 2500 • GMP: 2.4 GPM • Engine Type: 173CC Karcher • Sku:7112904

**KARCHER**



**G2700DH 2700 PSI 2.4 GPM GAS PRESSURE WASHER HONDA ENGINE**

• PSI: 2700 • GMP: 2.0 GPM • Engine Type: 161CC Honda GCV • Sku:7112912

**MI-T-M**



**CA-2703-1MMH JOB PRO ALUMINUM FRAME 2700PSI PRESSURE WASHER**

• PSI: 2700 • GMP: 2.4 GPM • Engine Type: 196CC Honda OHV • Sku:7660049

**MI-T-M**



**CV-2600-0MMC CHOREMASTER 2600PSI 2.2GPM PRESSURE WASHER (CV2400-0MMC)**

• PSI: 2600 • GMP: 2.2 GPM • Engine Type: 170CC MI-T-M OHV • Sku:7660022

**MI-T-M**



**JCW-3504-2MHB JOB PRO STEEL FRAME 3500PSI PRESSURE WASHER**

• PSI: 3500 • GMP: 3.7 GPM • Engine Type: 389CC Honda OHV • Sku:7660111

**MI-T-M**



**WP-2500-4MHB WORKPRO 2500PSI PRESSURE WASHER**

• PSI: 2500 • GMP: 2.3 GPM • Engine Type: 160CC Honda OHC • Sku:7660031

## Pressure Washers Accessories

**MI-T-M**



**WP-3000-4MHB WORKPRO 3000PSI PRESSURE WASHER**

• PSI: 3000 • GMP: 2.4 GPM • Engine Type: 196CC Honda OHV • Sku:7660120

**MI-T-M**



**851-0095 TRIGGER GUN & WAND ASSEMBLY**

• Sku:7660073

**MI-T-M**



**AW-0851-0338 50' NON-MARKING HOSE**

• Sku:7660065

**MI-T-M**



**AW-4003-0000 4 PACK 3.0 ORIFICE NOZZLES**

• Sku:7660090

**MI-T-M**



**AW-7018-1200 12' TELESCOPING WAND**

• Sku:7660057

**MI-T-M**



**AW-8400-0021 LOW PRESSURE DETERGENT INJECTOR**

• Sku:7660081

**MI-T-M**



**AW-4035-0000 4 PACK 3.5 ORIFICE NOZZLES**

• Sku:7660103

# Generators

GENERAC



**5939 5500W EMERGENCY GENERATOR**  
 • Watts: 550 • Outlets: (4) 5-20R 120 V and (1) L14-30R Twist-Lock 120/240 V • Tank Size: 6.6 GAL • **Sku:**1175190

GENERAC



**5943 7500W EMERGENCY GENERATOR w/ ELECTRIC START**  
 • Watts: 750 • Outlets: (4) 5-20R 120V and (1) L14-30R Twist-Lock 120/240V • Tank Size: 8 GAL • **Sku:**6459544

GENERAC



**LP5500 5500 WATT PORTABLE LP GENERATOR**  
 • Watts: 550 • Outlets: (2) 5-20R 120V and (1) L14-30R Twist-Lock 120/240V • Tank Size: 20lb or 30lb propane tank • Run time: 4.75 hrs (20lb tank), 7 hrs (30lb tank) • **Sku:**1185471

## Safety, Ear Protection

3M



**90541-80025 DIGITAL WORK-TUNES AM/FM HEARING PROTECTOR W/ MP3 ADAPTER**  
 AM/FM radio & hearing protector. Noise reduction rating (NRR) 22 dB. MP3, iPod or scanner compatible. **Sku:**3423425

3M



**90540-00000 BASIC EARMUFF**  
 Noise reduction rating (NRR) 20 dB  
 Multiple wearing positions. **Sku:**3423433

3M



**90560-00001 PROFESSIONAL EARMUFF**  
 For moderately loud conditions. Adjustable to fit children and adults. **Sku:**0398047

3M



**90537-80025T BAND STYLE HEARING PROTECTOR**  
 Highest banded noise reduction rating (NRR) 28 dB. **Sku:**3423476

3M



**90586-00000 REUSABLE CORDED - EAR PLUGS**  
 The #1 reusable earplug in the world with noise reduction rating (NRR) 25 dB. **Sku:**3423441

3M



**91296-00001 XLR8 YELLOW - PIN LOCK HARD HAT**  
 4-point, fully adjustable nylon suspension, pillow-padded sweatband. **Sku:**1250612

3M



**91295-00001 XLR8 WHITE HARD HAT W/ PINLOCK ADJUSTMENT, WHITE**  
 4-point, fully adjustable nylon suspension, pillow-padded sweatband. **Sku:**3423522

## Safety, Eye Protection

3M



**91111-00000 CLEAR EYEGLASS PROTECTOR**  
 Fits over most personal glasses. Built-in side shields for front and side impact protection. **Sku:**0161624

3M



**91251-00000 IMPACT SAFETY GOGGLE**  
 Protects eyes from flying chips and particles. Direct ventilation. **Sku:**0398187

3M



**91252-80024T CHEMICAL SPLASH - IMPACT GOGGLE, CLEAR LENS(91252-80025)**  
 Indirect ventilation prevents splash from reaching eyes. **Sku:**3423298

3M



**TSM216 BLACK FRAME / SMOKE LENS SUNGLASSES - DAKURA POLARIZED**  
 Highly flexible nylon frame. Polarized lenses, fog & scratch resistant. **Sku:**7103701



## Safety, Fall Protection

3M



### 94050-00000 3M ANSI/OSHA COMPLIANCE ROOFER'S FALL PROTECTION KIT

**Includes:** 5 point harness, shock pack, reusable roof anchor, 25' lifeline with mechanical rope grab, storage bucket. **Sku:**1270478

qual-craft



### 00815-QC5 BUCKET OF SAFE-TIE KIT - OSHA APPROVED

**Includes:** Universal harness with 5 points of adjustment, vertical lifeline assembly, 50' rope, shock pack, positioning device with 18" lanyard, (1) HD temper reusable anchor. **Sku:**3520145

## Safety, Respirators

3M



### 8511 RESPIRATOR W/COMFORT VALVE WOODWRKG,SANDING & FIBERGLASS 10/BOX

Patented Cool Flow® exhalation valve for easy breathing and cool, dry comfort. **Sku:**3426505

3M



### 8210+ DUST/MIST RESPIRATOR MASK 20/BOX (8560, 8210 N95)

Lightweight construction, adjustable nose clip. Protection against certain solid and non-oil based aerosol particles. **Sku:**3427170

3M



### PRO SERIES RESPIRATOR ASSEMBLY

Certified for certain organic vapors, dusts, mists and paint sprays. Patented Cool Flow® exhalation valve for easy breathing and cool, dry comfort. **R-7513ES LG Sku:**3425703 **7512PA1-A MED Sku:**3425673

3M



### R5P71 PARTICULATE FILTER FOR R7513ES 10/PK (5P71-6)

Replacement particulate filter. **Sku:**6524885

3M



### 8233 3M N100 DISPOSABLE RESPIRATOR

Full nose/face seal and exhale valve. **Sku:**3425142

3M



### R6311 HALF FACE PIECE PAINT SPRAY / PESTICIDE RESPIRATOR ASSEMBLY - LARGE

**Includes:**  
 (1) each half facepiece 6300  
 (1) pair organic vapor cartridge 6011  
 (2) pair particulate filter 5P71, P95  
 (1) pair filter retainer 501  
**Sku:**3425690

3M



### 6297PA1-A TEKK PROTECTION MOLD & LEAD PARTICLE RESPIRATOR MEDIUM

**Includes:**  
 (1) half face piece respirator 6000  
 (1) pair particulate filter 2097  
**Sku:**3426611

## Safety, Knee Pads

CLC



**V230 PLASTIC CAP KNEE PADS**  
 1/2" thick foam interior for maximum comfort. **Sku:**1102141

CLC



**361 ULTRA-FLEX PRO KNEE PADS**  
 Non-skid professional kneepads. **Sku:**1310941

CLC



**DG5224 DEWALT HEAVY DUTY FLOORING KNEEPADS**  
 Neoprene fabric liner, ballistic poly fabric, textured PVC outer shell. **Sku:**1314815

CLC



**G361 PROFESSIONAL ULTRA-FLEX GEL KNEE PADS**  
 Comfort Zone gel center provides maximum cushioning. **Sku:**6502792

## Ladders, Fiberglass Step Ladders

LOUISVILLE



**FS1508 8' TYPE IA FIBERGLASS STEPLADDER**  
300 lb. duty rating. **Sku:**1473131

LOUISVILLE



**FS1506 6' TYPE IA FIBERGLASS STEPLADDER**  
300 lb. duty rating. **Sku:**1473115

LOUISVILLE



**FS1510 10' TYPE IA FIBERGLASS STEPLADDER**  
300 lb. duty rating. **Sku:**1475401

LOUISVILLE



**FS1512 12' TYPE IA FIBERGLASS STEPLADDER**  
300 lb. duty rating. **Sku:**1475568

## Ladders, Fiberglass & Aluminum Extension Ladders

LOUISVILLE



**AE2832 32' TYPE 1A ALUMINUM EXTENSION LADDER**  
300 lb. duty rating, D-rung two section, full I-beam side rails. **Sku:**1470698

LOUISVILLE



**AE2840 40' TYPE 1A ALUMINUM EXTENSION LADDER**  
300 lb. duty rating, D-rung two section, full I-beam side rails. **Sku:**1470701

LOUISVILLE



**AE2824 24' TYPE 1A ALUMINUM EXTENSION LADDER**  
300 lb. duty rating, D-rung two section, full I-beam side rails. **Sku:**1470671

LOUISVILLE



**FE3228 28' TYPE 1A FIBERGLASS EXTENSION LADDER**  
300lb duty rating, D-shaped rungs, outside slide guides. **Sku:**1475240

LOUISVILLE



**AE2816 16' TYPE 1A ALUMINUM EXTENSION LADDER**  
300 lb. duty rating, D-rung two section, full I-beam side rails. **Sku:**1471546

## Storage, Organizers

STANLEY



**014710R 10 COMPARTMENT PROFESSIONAL ORGANIZER**  
Unique lid design keeps storage cups locked in place. **Sku:**5070058

STANLEY



**014725R 25 COMPARTMENT ORGANIZER**  
Unique lid design keeps storage cups locked in place. **Sku:**5070040

STANLEY



**014461M FATMAX PRO XL ORGANIZER**  
Unique lid design keeps storage cups locked in place. **Sku:**5070066

## Storage, Hard-Sided Storage

**STANLEY**



**019151M 19" SERIES 2000 TOOLBOX WITH TRAY**

Two lid organizers for small parts storage, built-in pad lock eye for small locks. **Sku:5070163**

**STANLEY**



**024013S 24" SERIES 2000 TOOLBOX WITH TRAY**

Two lid organizers for small parts storage, built-in pad lock eye for small locks. **Sku:5070171**

**STANLEY**



**028001L FATMAX 28" STRUCTURAL FOAM TOOLBOX**

Ideal for carrying medium to large items. Patented water seal makes toolbox water resistant. **Sku:5070104**

**STANLEY**



**020300R 20" PROFESSIONAL TOOLBOX**

Full length handle for stability, extra large heavy duty metal latches with pad lockable eyelets. **Sku:5070082**

## Storage, Soft-Sided Storage



**15054 BUCKET BOSS SUPER STACKER**

Great for large parts. Includes a drill bit sizer, pencil holder, and measuring rule. **Sku:1290428**



**1119 TOOL WORKS BUCKET POCKETS BLK/TAN**

Turns standard 5 gallon bucket into a carrier/organizer. 14 double-row pockets inside and 34 triple-row pockets outside. **Sku:1312014**



**1116 TOOL TOTE - STANDARD**

Built of super tough, super light fabric for durability and long wear. **Sku:1344781**

## Storage, Dewalt TSTAK System (Stackable)

**DEWALT**



**DWST24070 DEWALT TOTE W/ REMOVABLE POWER TOOLS CASE**

Top case with integrated carry handle. **Sku:6536395**

**DEWALT**



**DWST17805 DEWALT TSTAK ORGANIZER**

8 removable dividers let you customize the case layout. **Sku:6539688**

**DEWALT**



**DWST17808 DEWALT TSTAK CASE W/LONG HANDLE**

Removable covered cups for organization of small parts & accessories. **Sku:6538461**

**DEWALT**



**DWST17807 DEWALT TSTAK CASE FLAT TOP**

Removable covered cups for organization of small parts & accessories. **Sku:6538444**

**DEWALT**



**DWST17806 DEWALT TSTAK DEEP BOX**

Great for storing larger tools. **Sku:6539696**

**DEWALT**



**DWST17804 DEWALT TSTAK 2 DRAWERS W/DIVIDERS**

Removable covered cups for organization of small parts & accessories. **Sku:6538479**

**DEWALT**



**DWST17889 DEWALT TSTAK CART**

Weight capacity - 220 lbs. Heavy duty wheels roll on difficult surfaces. **Sku:6539700**



## Storage, Dewalt TOUGH System (Stackable)

**DEWALT**



### DWST08201 TOUGH SYSTEM SMALL CASE

Integrated water seal for protection of contents. **Sku:**6537855

**DEWALT**



### DWST08204 X-LARGE CASE TOUGH SYSTEM

Integrated water seal for protection of contents. **Sku:**6537871

**DEWALT**



### DWST08203 TOUGH SYSTEM LARGE CASE

Integrated water seal for protection of contents. **Sku:**6537863

**DEWALT**



### DWST08210 TOUGH SYSTEM DS CARRIER

Metal carrier with adjustable foldable brackets. Central locking mechanism secures the boxes to the frame. **Sku:**6537880

## Storage, Tool Hooks

**qual-craft**  
INDUSTRIES, INC.



### 3630 QUALCRAFT TOOL HOOK - ORIGINAL

Attaches to belt & hold almost any tool. **Sku:**3520331

**qual-craft**  
INDUSTRIES, INC.



### 3633 QUALCRAFT TOOL HOOK - WITH BIT TOTE

Attaches to belt & hold almost any tool. **Sku:**3520358

**qual-craft**  
INDUSTRIES, INC.



### 3631 QUALCRAFT TOOL HOOK - BUNGEE

Attaches to belt & hold almost any tool. **Sku:**3520340

## Storage, Aprons & Belts

**CLC**



### C6 2 POCKET CANVAS WAIST APRON

Durable cotton fabric; machine washable. **Sku:**3648028

**CLC**



### I427X 12 POCKET SUEDE CARPENTER'S APRON

4 large nail and tool pockets, 16 - 30' measuring tape holder, tool and pencil pockets, 2 metal hammer loops. **Sku:**1108735

**CLC**



### I923X 10 POCKET VALUE PLUS SUEDE NAIL & TOOL BAG

4 main nail/tool pockets, 6 smaller pockets, leather hammer loop, metal clip holds measuring tape. Fits belts up to 2-3/4" wide. **Sku:**1319124

**CLC**



### I370X3 8 POCKET PRO/DIY APRON SUEDE

4 large nail and tool pockets, 16 - 30' measuring tape holder, tool & pencil pockets, 2" wide poly web belt with quick-release buckle, leather hammer loops. Heavy duty suede leather. **Sku:**1311018

**CLC**



### 5000L ECONO BACK SUPPORT, LARGE

Elastic back support system with suspenders. **Sku:**1108921

**FastCap**



### SPEEDCLIP BLACK SPEEDCLIP TAPE MEASURE HOLDER W/BUILT IN SHARPENER

Clips over pants or belt, or mounts to a bench. **Sku:**7070209

**CLC**



### C12 5 POCKET CANVAS APRON W/ HAMMER HOLDER

3 tool pockets, 2 larger nail pockets, web hammer loop. Cotton fabric, machine washable. **Sku:**1311026



- Bridgton 116 Portland Road 647-8333
- Brunswick 158 Church Road 725-5547
- Damariscotta 326 Main Street 563-3181
- Kennebunk 95 York Street 985-6565
- North Conway 2451 White Mountain Hwy 603-356-6689
- Windham 403 Roosevelt Trail 892-6711
- Yarmouth 258 Main Street 846-5555

# DEWALT®

**20v MAX\***  
LITHIUM ION

**BRUSHLESS MOTOR**



**XR HIGH CAPACITY BATTERY PACKS**

**XR**  
**EXTREME RUNTIME**

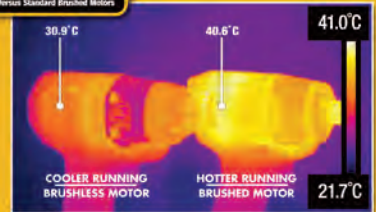


**Brushed Motor**  
Mechanical carbon brush system generates friction, heat buildup and energy loss resulting in less run time.



**Brushless Motor**  
Electronically controls energy transfer efficiently within the tool. This allows the tool to run longer between charges.

**BRUSHLESS MOTORS UP TO 57% MORE RUNTIME**  
Versus Standard Brushed Motors



**Cooler Running. More Efficient. Longer Runtime.**



**GET MORE DONE!**



**GUARANTEED TOUGH.®**

\*Maximum rated battery voltage measured without a load at 20 volts. Nominal voltage is 18V.  
Copyright ©2014 DeWalt. The following are examples of trademarks for which DeWalt® (power tools and accessories, the yellow and black color scheme, the "D" logo) are making part of the array of goods on this sample. The list has configurations, and the array of example images on the surface of the tool. 2014 943 00 0002 and 00000014 0002