

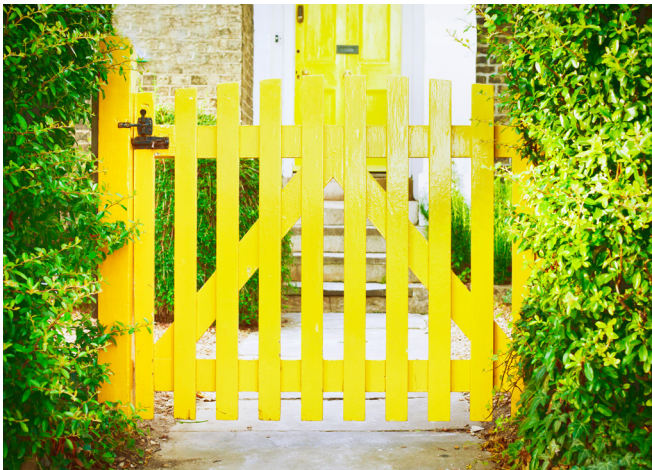
+

## CAL-TINT® 830

### Universal Colorants

CAL-TINT® 830 Colorants are universal colorants designed to have broad compatibility in trade sales, water-based and solvent-based paints. The colorant is packaged in 16 oz. squeeze bottles for on-the-job tinting.

CAL-TINT® 830 Colorants are rigidly controlled and disperse easily and completely in most trade sales paint bases, with few, if any, adjustments in formulation. However, compatibility should be rechecked after any changes in paint base formulation, because this is a key to color fidelity.



- Sash and trim paints
- Wood stains

#### ► Permanence

The pigments used in CAL-TINT® 830 Colorants were selected to provide a wide range of hues, good durability, lightfastness and alkali resistance. However, the lightfastness, alkali resistance, and weathering properties of pigments (particularly organic reds and yellows) depend a great deal on the coatings, substrate and application conditions. For positive verification of lightfastness and durability, we recommend that the colorants be tested under accelerated or actual weathering conditions in the coating system and on the substrates where they will be employed.

#### ► Chemistry and Compatibility

CAL-TINT® 830 Colorants are compatible with latex paint based on:

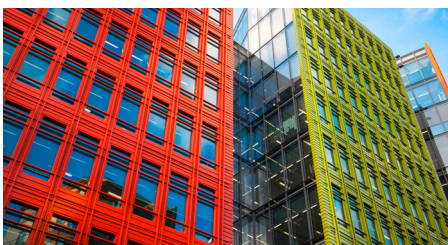
- PVA emulsions
- Acrylic emulsions
- Styrene-butadiene emulsions
- Alkyd modified emulsions
- Other water-based systems

And conventional solvent-type formulations of:

- Flat, semi-gloss and gloss finishes
- Oil-type house paints
- Shake and shingle paints

#### ► High Solar Exposure

When formulating with COLORTREND® Colorants, consideration must be given to special circumstances of use and their effect on colorant durability. Examples of such conditions are: tropical or subtropical climates, deserts, and ocean-front locations. In each of these instances, the solar radiation received is significantly greater than in most other environments. Therefore, the use of organic pigments in these situations should be considered only after careful evaluation of the fastness of the colorant/vehicle combination to ensure it will meet expected performance. The most reliable method of testing is to expose the coating under the expected conditions of use.



Product Code	Description	Lbs/Gal	% Composition by Weight			% Composition by Volume			VOC	
			Pigment Solids	Vehicle Solids	Volatiles	Pigment Solids	Vehicle Solids	Volatiles	Lbs/Gal	g/L*
830-0494	Permanent Red	11.0	1.32	32.5	11.7	55.8	18.6	14.9	5.1	613
830-0802 (1)	Bulletin Red	11.5	1.39	40.6	6.6	52.8	25.0	7.1	5.4	649
830-0979 (1)	Perma Cal Orange	10.8	1.30	31.6	11.1	57.3	16.6	14.3	5.4	650
830-1047	Venetian Red	16.9	2.09	60.3	9.3	30.4	24.1	18.8	4.5	537
830-1109	Burnt Sienna	15.4	1.88	54.9	11.3	33.9	21.3	20.6	4.1	496
830-1313	Burnt Umber	13.9	1.67	55.0	11.9	33.2	28.7	19.5	3.0	359
830-1824	Raw Sienna/ Yellow Oxide	14.9	1.79	52.1	11.9	36.0	32.1	20.1	4.4	523
830-2009	Raw Umber	13.2	1.58	55.5	11.4	33.2	29.9	18.7	3.3	390
830-2024	Exterior Med Yellow	11.8	1.40	47.7	10.6	41.7	31.5	14.6	3.7	449
830-2501	Exterior Light Yellow	11.8	1.37	47.3	6.8	45.9	33.6	9.2	4.5	537
830-2506 (1)	Interior Yellow	12.0	1.40	41.0	8.3	50.7	23.2	11.4	4.9	590
830-4333	Light Green	13.0	1.54	45.3	10.5	44.3	23.0	15.3	4.1	493
830-5515	Phthalo Green	12.1	1.44	46.5	11.2	42.3	26.6	16.3	4.4	533
830-7216	Phthalo Blue	11.5	1.38	35.8	11.8	52.3	19.4	15.8	5.3	630
830-8895 (1)	Violet	11.0	1.30	33.0	18.4	48.6	16.8	24.1	4.4	531
830-9907	Lamp Black	11.5	1.37	44.0	12.6	43.4	28.4	16.9	3.7	439

This information and all further technical advice is based on our present knowledge and experience. However, it implies no liability or other legal responsibility on our part, including with regard to existing third party intellectual property rights, especially patent rights. In particular, no warranty, whether express or implied, or guarantee of product properties in the legal sense is intended or implied. We reserve the right to make any changes according to technological progress or further developments. The customer is not released from the obligation to conduct careful inspection and testing of incoming goods. Performance of the product described herein should be verified by testing, which should be carried out only by qualified experts in the sole responsibility of a customer. Reference to trade names used by other companies is neither a recommendation, nor does it imply that similar products could not be used.



Where Art Meets Technology