



**Putting Quality
and Innovation
in Your Hands.™**



Smarter. Stronger. Better. The Warner Way.™

President's Page

Warner Tool Products have been the preferred and trusted choice of professional trade people and do-it-yourselfers since 1927. At Warner, we put the customer first. Our customers have learned to depend on products that carry the Warner brand. We've earned that trust by keeping our focus on the customer while adding value and innovation to our products.

The people at Warner are always focused on providing our customers with **Smarter** solutions, **Stronger** products, and **Better** service. This is **The Warner Way**.

We are continuously finding new and innovative solutions for our customers that will make their job easier and better. Our customers experience this through our continuous introduction of new products and the ongoing enhancements of our current product offerings. In 2002 we acquired Bull Dog Power Products, a line of lighting products and accessories, to further enhance our product offerings to our customers. With the addition of Bull Dog Power Products, we also changed our company's logo to better represent the total line of Warner products.

In 2004, we added a new line of Paint Pad products and accessories, including pads, rollers, edgers, replacement pads, refills and accessories for the professional and do-it-yourself painter. Most recently in 2007, we added an extensive line of Mini-Roller products and accessories that boast over 80 new SKUs. These tools complement our Paint Pad products while also providing a bridge for building onto our extensive line of hand tools for interior and exterior preparation and application products.

We believe our customers deserve the best. Therefore, we set our quality standards high and assure that every product we produce meets or exceeds those standards.

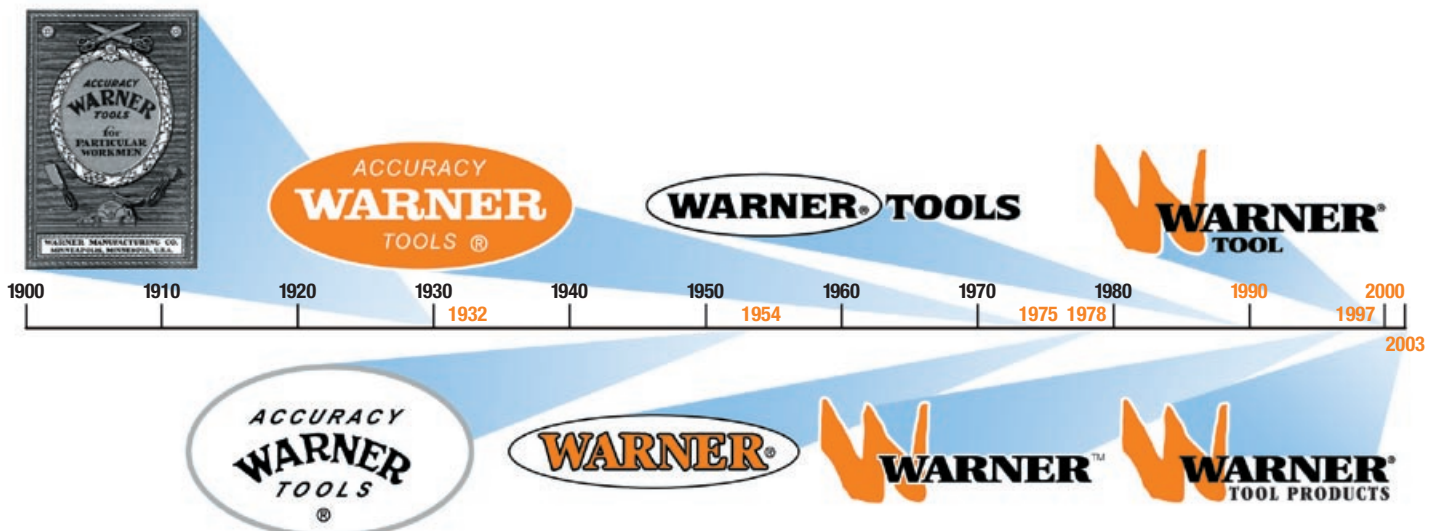
Our customers know that when they purchase a Warner product they are not just purchasing a stand-alone solution; they are purchasing a total commitment from an organization that is committed to providing its customers with a truly satisfying buying experience.

From our first company logo, "Warner Accuracy Tools," over 80 years ago to today's logo, "Warner Tool Products," Warner's commitment to providing outstanding value and service to the customer is unchanging.

Smarter. Stronger. Better. The Warner Way.™

Jerry Ranallo
President

Guy R. Warner
Chairman of the Board



Carbide 100X, EZ-Stride, Letric, ProCut, ProGrip, Rasp N' Knife, Score N' Snap and The Painter's Blade are registered trademarks of Warner Tool Products.

Double Diamond, Easy Reach, EZ-Corner, EZ-Roll, Hammer Cap, Hi-Stride, Paint 'N' Trim, Patch 'N' Trim, PistolGrip, Profab, ProGrip2, Pro-X-Tend, Safety 1st, SideKick Paint Tote, Smoothfoam, Strip 'N' Clean, Ultra-Sorb and Veri-Smooth are trademarks of Warner Tool Products.

Tri-Pad and Wallwik are registered trademarks

Putty Knives and Scrapers

ProGrip2™ 4-7
 ProGrip2™ Stainless Steel 7
 American Pride Series 7
 Mexican Heritage Series 7
 Rosewood Series 8-9
 DIY Series 9
 Plastic Series 9
 Painter's Series 10
 Miscellaneous Knives and Scrapers 10

Paint Scrapers

Carbide 100X® Scrapers 11
 Carbide 100X® Scrapers with Knob 11
 Carbide 100X® – Softgrip Handle 11
 Carbide Scraper with Pivot Handle 11
 Carbide 100X® Replacement Blades 12
 2-Edge Steel Blade Paint Scrapers 12
 4-Edge Steel Blade Paint Scrapers 12
 2- and 4-Edge Replacement Blades 12
 Specialty Scrapers 13
 Specialty Scraper Replacement Blades 13
 Heavy-Duty Scrapers 13
 Threaded Scrapers 13
 Electric Paint Remover 14
 Strip 'N' Clean™ Scrapers 14
 Strip 'N' Clean™ Replacement Blades 14
 Big Blade Scrapers 15
 Big Blade Replacement Blades 15
 Safety 1st™ Scrapers 16
 Premium Safety 1st™ Scrapers 16
 Safety 1st™ Replacement Blades 16
 Razor Scrapers 16
 Razor Blades 16

Snap, Flooring and Folding Knives

10-in-1 Folding Tool 17
 Hawkbill Knives 17
 Snap-Off Blade Knives 17
 Snap-Off Replacement Blades 17

Extension Poles

Pro-X-Tend™ Fiberglass and Aluminum Poles 18
 Steel Poles 18
 Pole Adapters 18

Paint Accessories

Brush and Roller Cleaners 19
 Spray Shields 19
 Paint and Trim Guides 19-20
 Sanders 20
 Pry Bars 20
 Buckets and Openers 20
 Mixers 21
 Miscellaneous 21
 Brushes 21

Mini-Rollers

SmoothFoam™ 22
 Veri-Smooth™ 22-23
 Profab™ 23
 Ultra-Sorb™ 23-24
 EZ-Roll™ 24
 Kits and Frames 25
 Double Diamond™ Roller Frames 25
 Roller Trays and Paint Tote 25
 Paint Can Accessories 25

Paint Pads

Pad Painters 26
 Deck and Stain Pad Painters 26
 Edge and Trim Painters 26
 Rollers 26

Window Tools

Glass Cutter 27
 Window Tools 27

Knives

Utility Knives 28
 Utility Blades 28
 Hopper Gun 28

Taping Knives

ProGrip2™ – Blue Steel 29
 ProGrip2™ – Stainless Steel 29
 Aluminum Backing Plate – Poly Handle 29
 Aluminum Backing Plate – Wood Handle 29
 Molded Backing Plate – Plastic Handle 29
 Curved Blade Knock Down Knives 30
 Knock Down Knives – Long Handle 30
 Knock Down Knives – Short Handle 30
 Miscellaneous Taping Knives 30

Drywall Tools

Trowels 31
 Floats 31
 Applicator Brushes 31
 Smoothers 31
 Hawk 31
 Mud Pans 32
 Saws 32
 Hand Sanders 32
 Pole Sanders 32
 T-Squares and Tapes 33
 Mixers 33
 Miscellaneous 33

Benches and Stilts

EZ-Stride® Step-Up Benches 34
 EZ-Stride® Drywall Bench 34
 EZ-Stride® Aluminum Stilts 35
 EZ-Stride® Magnesium Stilts 35

Tile Tools

Spreaders 36
 Miscellaneous 36

Masonry Tools

Trowels 37
 Pointing Trowels 37
 Groover and Jointing Trowels 37
 Floats 37

Wallcovering Tools

Smoothers 38
 Brushes 38
 Cutters and Snap-Off Blade Knives 38
 Razor Knives 38
 Seam Rollers 39
 Wallcovering Kit 39
 Rulers and Levels 39
 Accessories 40

Assortments and Displays

ProGrip2™ Assortments 41
 DIY Series Assortment 41
 Plastic Series Assortment 41
 Painter's Series Display 41
 Paint Pad Assortments 42
 Paint Applicator Assortments 42-43
 Certified Parts Assortments 44
 Drywall Assortments 44
 Carbide 100X® Assortments 44
 Pro-X-Tend™ Assortments 45
 ProGrip®/ProGrip2™ Displays 45
 Miscellaneous Displays 45
 Kits 45
 Bucket Displays 46
 Display Strips 46
 Bucket Tree Display Products 46

Rental

Wallpaper Steamer 47
 Floor Stripper 47

Index 48-49

Read and follow any safety related information in or on the product and packaging.

ProGrip²™ Patented Color-Coding Handle Technology*

The ProGrip²™ line uses a patented color-coded handle system to identify blade flexibility: Stiff, Flex, Full Flex. Matched color-coded icons on the labels demonstrate usage. This at-a-glance identification helps customers select the right tool for their needs and makes for easier, faster sales for you. The ProGrip²™ line features:

- Ergonomic, color-coded soft grip handles
- Two handle-size options: Standard and XL (on select models)
- Seven blade-flexibility options
- High-quality carbon steel blades
- Full tang
- Hammer Cap™ (on select models)
- Chisel-edge on stiff knives (except #90129)
- Large hang-hole size
- Made in U.S.A.

Red Handle = Stiff

Heavy-duty blades provide maximum strength and have a chisel-edge ground at a 16° angle. It is the optimum angle for fine scraping and shaving with less gouging or chipping. Standard blades are .050" thick and heavy-duty blades are .080" thick. Handles have a ribbed finger grip for better pushing control.

FOR SCRAPING AND REMOVAL



STIFF - STANDARD HANDLE



Item No.	Description	Type of Packaging	Pack Weight	Pack Qty.
90101	1-1/4" Chisel Putty Knife, .080"; Stiff	Labeled	3	5
90107	1-1/4" Putty Knife, Stiff	Labeled	2	5
90109	1-1/2" Putty Knife, Stiff	Labeled	2	5
90111	2" Putty Knife, Stiff	Labeled	2	5



Item No.	Description	Type of Packaging	Pack Weight	Pack Qty.
90115	3" Scraper, Stiff	Labeled	4	5
90119	4" Broad Knife, Stiff	Labeled	2	5
90129	6" Broad Knife, Stiff	Labeled	3	5

STIFF - STANDARD HANDLE - HAMMER CAP™



Item No.	Description	Type of Packaging	Pack Weight	Pack Qty.
90100	1-1/4" Chisel Putty Knife, Hammer Cap™, .080", Stiff	Labeled	3	5
90171	2" Putty Knife, Hammer Cap™, Stiff	Labeled	2	5
90175	3" Scraper, Hammer Cap™, Stiff	Labeled	3	5



Item No.	Description	Type of Packaging	Pack Weight	Pack Qty.
90189	5-in-1 Glazier Knife, .080", Stiff. Scraper, Roller Squeegee, Spreader, Crack Cleaner, Can Opener	Labeled	3	5
90199	6-in-1 Glazier Knife, Hammer Cap™, .080", Stiff. Scraper, Roller Squeegee, Spreader, Crack Cleaner, Can Opener, Nail Setter	Labeled	3	5
90173	8-in-1 Glazier Knife, .060" Hammer Cap™, Stiff. Scraper, Roller Squeegee, Spreader, Crack Cleaner, Can Opener, Utility Knife, Nail Setter, Nail Puller	Labeled	2	5
10173	8-in-1 Glazier Knife, 10/Counter Display, #90173	Boxed		1
10199	6-in-1 Glazier Knife, 10/Counter Display, #90199	Boxed		1



Item No.	Description	Type of Packaging	Pack Weight	Pack Qty.
10309	15-in-1 Painter's Tool, .080"	Labeled	2	5

Blue Handle = Flex

Standard carbon steel blades are hollow-ground to provide consistent flex and proper stiffness for spreading heavy drywall compound. Ideal for first-coat applications. Ergonomic handles are designed to fit the hand more comfortably, for use as a spreading tool and to reduce fatigue. Some models available with an extra-large handle and Hammer Cap™

FOR SPREADING AND APPLYING



FLEX - XL HANDLE - HAMMER CAP™



Item No.	Description	Type of Packaging	Pack Weight	Pack Qty.
90174	3" Putty Knife, XL, Hammer Cap™ Flex	Labeled	2	5
90176	4" Broad Knife, XL, Hammer Cap™ Flex	Labeled	2	5
90177	5" Broad Knife, XL, Hammer Cap™ Flex	Labeled	2	5
90178	6" Broad Knife, XL, Hammer Cap™ Flex	Labeled	3	5

ProGrip²

	STIFF	FLEX	FULL FLEX	FLEX RATED
1 1/4"	90100* 90101 90107	90106	90131	
1 1/2"	90109 90661	90108 90660* 10351	90127	
2"	90111 90171*	90110	90128	
3"	90115 90175* 90662	90114 90123* 90174* XL 90663* XL	90132* 90133	
4"	90119 90667	90118 90124* 90176* XL 90664* XL	90134* 90135	
5"		90120 90125* 90177* XL 90665* XL	90136 90138*	
6"	90129	90122 90126* 90178* XL 90666* XL	90137 90139*	90180* XL 90182* XL 90184* XL 90186* XL
5-in-1	90189			
6-in-1	90199*			
8-in-1	90173*			
	For scraping and removal	For spreading and applying	Applying light-weight materials	Choose the flex you like

*Hammer Cap™

Use 1 1/4"-2" knives to apply spackle, putty and for detail work in smaller areas.

Use 3" knives for patching, touch-up and heavy-duty scraping.

Use 4"-6" knives for taping drywall joints and large surface scraping.

Use a **multi-purpose** tool to scrape, clean and glaze.

FLEX - STANDARD HANDLE



Item No.	Description	Type of Packaging	Pack Weight	Pack Qty.
90106	1-1/4" Putty Knife, Flex	Labeled	2	5
90108	1-1/2" Putty Knife, Flex	Labeled	2	5
10351	1-1/2" Painter's Knife	Labeled	2	5
90110	2" Putty Knife, Flex	Labeled	2	5
90114	3" Putty Knife, Flex	Labeled	3	5



Item No.	Description	Type of Packaging	Pack Weight	Pack Qty.
90118	4" Broad Knife, Flex	Labeled	2	5
90120	5" Broad Knife, Flex	Labeled	2	5
90122	6" Broad Knife, Flex	Labeled	2	5

FLEX - STANDARD HANDLE - HAMMER CAP™



Item No.	Description	Type of Packaging	Pack Weight	Pack Qty.
90123	3" Putty Knife, Hammer Cap™ Flex	Labeled	2	5
90124	4" Broad Knife, Hammer Cap™ Flex	Labeled	2	5
90125	5" Broad Knife, Hammer Cap™ Flex	Labeled	2	5
90126	6" Broad Knife, Hammer Cap™ Flex	Labeled	2	5

Yellow Handle = Full Flex

Full Flex applies to blades that have been hollow-ground thinner for maximum flexibility. They are designed for lighter compounds and higher application rates. Perfect choice for final- or finish-coat applications.

Ergonomic handle is wider and flatter, designed to fit the hand for use as a spreading tool and to reduce fatigue. Design improves blade control.

FOR APPLYING
LIGHTWEIGHT
MATERIALS



FULL FLEX - STANDARD HANDLE



Item No.	Description	Type of Packaging	Pack Weight	Pack Qty.
90131	1-1/4" Putty Knife, Full Flex	Labeled	2	5
90127	1-1/2" Putty Knife, Full Flex	Labeled	2	5
90128	2" Putty Knife, Full Flex	Labeled	2	5
90133	3" Putty Knife, Full Flex	Labeled	2	5



Item No.	Description	Type of Packaging	Pack Weight	Pack Qty.
90135	4" Broad Knife, Full Flex	Labeled	2	5
90136	5" Broad Knife, Full Flex	Labeled	2	5
90137	6" Broad Knife, Full Flex	Labeled	2	5

FULL FLEX - STANDARD HANDLE - HAMMER CAP™



Item No.	Description	Type of Packaging	Pack Weight	Pack Qty.
90132	3" Putty Knife, Hammer Cap™ Full Flex	Labeled	3	5
90134	4" Broad Knife, Hammer Cap™ Full Flex	Labeled	3	5
90138	5" Broad Knife, Hammer Cap™ Full Flex	Labeled	3	5
90139	6" Broad Knife, Hammer Cap™ Full Flex	Labeled	3	5

Orange Handle = Flex Rated

Have you ever watched a contractor go through a rack of knives to test the blade flex? Professionals often test knife after knife looking for that special feel. That's why Warner introduced Flex Rated broad knives. It's an industry first with four standardized flexes, so the contractor can buy the same feel every time. Guaranteed.

Blades on these ProGrip2™ tools are hollow-ground to be progressively more flexible, from #1 to #4. Blades are selected to meet the exact specifications of each flex level, so customers get the same flex every time.

Extra-large, ergonomic handles are wider and flatter. The larger handle size enhances both control and comfort. XL handle size also fits larger hands and reduces fatigue.



FLEX RATED - XL HANDLE - HAMMER CAP™



Item No.	Description	Type of Packaging	Pack Weight	Pack Qty.
90180	6" Broad Knife, XL, Hammer Cap™ Flex Rated #4 (Full Flex)	Labeled	3	5
90182	6" Broad Knife, XL, Hammer Cap™ Flex Rated #3 (Medium Flex)	Labeled	3	5
90184	6" Broad Knife, XL, Hammer Cap™ Flex Rated #2 (Firm Flex)	Labeled	3	5
90186	6" Broad Knife, XL, Hammer Cap™ Flex Rated #1 (Rigid Flex)	Labeled	3	5

Stainless Steel Blades

Same great ProGrip2™ features and color-coded handle system with high-quality stainless steel blades. Available in Stiff and Flex blade and two handle-size options. All have a silver Hammer Cap™ and eye-catching silver label for retail appeal.

STIFF - STANDARD HANDLE - STAINLESS - HAMMER CAP™



Item No.	Description	Type of Packaging	Pack Weight	Pack Qty.
90661	1-1/2" Putty Knife, Stainless Steel, Hammer Cap™ Stiff	Labeled	2	5
90662	3" Scraper, Stainless Steel, Hammer Cap™ Stiff	Labeled	2	5
90667	4" Broad Knife, Stainless Steel, Hammer Cap™ Stiff	Labeled	3	5

FLEX - STANDARD HANDLE - STAINLESS - HAMMER CAP™



Item No.	Description	Type of Packaging	Pack Weight	Pack Qty.
90660	1-1/2" Putty Knife, Stainless Steel, Hammer Cap™ Flex	Labeled	2	5

FLEX - XL HANDLE - STAINLESS - HAMMER CAP™



Item No.	Description	Type of Packaging	Pack Weight	Pack Qty.
90663	3" Putty Knife, Stainless Steel, XL, Hammer Cap™ Flex	Labeled	2	5
90664	4" Broad Knife, Stainless Steel, XL, Hammer Cap™ Flex	Labeled	3	5
90665	5" Broad Knife, Stainless Steel, XL, Hammer Cap™ Flex	Labeled	3	5
90666	6" Broad Knife, Stainless Steel, XL, Hammer Cap™ Flex	Labeled	3	5

American Pride and Mexican Heritage

These flex bladed tools are made with pride to honor American and Mexican craftsmen. Standard handle features a curved handle for spreading control and a ribbed finger grip to help prevent hand slippage. Blades are hollow-ground to provide a consistent flex and proper stiffness for spreading compounds.

AMERICAN PRIDE SERIES



Item No.	Description	Type of Packaging	Pack Weight	Pack Qty.
40124	4" Broad Knife, Hammer Cap™	Labeled	2	5
40125	5" Broad Knife, Hammer Cap™	Labeled	2	5
40126	6" Broad Knife, Hammer Cap™	Labeled	2	5

MEXICAN HERITAGE SERIES



Item No.	Description	Type of Packaging	Pack Weight	Pack Qty.
10144	4" Broad Knife, Hammer Cap™	Labeled	2	5
10145	5" Broad Knife, Hammer Cap™	Labeled	2	5
10146	6" Broad Knife, Hammer Cap™	Labeled	2	5
10189	5-in-1 Glazier Knife	Labeled	2	5

Warner Quality— Craftsmanship You Can Trust

If you're a professional who likes the feel of wood-handled tools but wants the performance of today's technology, the choice is Warner. The Rosewood Series offers the same high-quality blades as the ProGrip® Series, but with hardwood handles. Rosewood-colored handles are laminated and then pressure-treated with resin to be moisture-resistant. Won't swell or crack. Blades are made from .050", .060" and .080" thick carbon steel.

Rosewood Series Features:

- Blades are made of #1074 high carbon-grade steel
- Hollow-ground, heat-treated and annealed for toughness
- Blades polished and buffed to high luster finish for easier application and cleanup
- Full-tang design for maximum strength
- Brass rivets and eyelets mechanically lock handle to tang so it can't come loose
- Chisel-edge on stiff knives

ROSEWOOD SERIES - STIFF

Heavy-duty blades provide maximum strength and have a chisel edge ground at a 16° angle. It is the optimum angle for fine scraping and shaving with less gouging or chipping.



STIFF



Item No.	Description	Type of Packaging	Pack Weight	Pack Qty.
379	5-in-1 Glazier Knife, .080", Stiff	Labeled	3	5
601	1-1/4" Putty Knife, Chisel Ground, .080", Stiff	Labeled	2	5



Item No.	Description	Type of Packaging	Pack Weight	Pack Qty.
607	1-1/4" Putty Knife, Stiff	Labeled	2	5
609	1-1/2" Putty Knife, Stiff	Labeled	2	5
611	2" Putty Knife, Stiff	Labeled	2	5
615	3" Scraper, Stiff	Labeled	3	5

ROSEWOOD SERIES - FLEX

Carbon steel blades of .050" and .060" thickness are hollow-ground to provide a flex with the proper stiffness to handle heavy drywall compounds. Use these for first-coat applications.



FLEX



Item No.	Description	Type of Packaging	Pack Weight	Pack Qty.
606	1-1/4" Putty Knife, Flex	Labeled	2	5
608	1-1/2" Putty Knife, Flex	Labeled	2	5
610	2" Putty Knife, Flex	Labeled	2	5
614	3" Putty Knife, Flex	Labeled	2	5



Item No.	Description	Type of Packaging	Pack Weight	Pack Qty.
618	4" Broad Knife, Flex	Labeled	2	5
620	5" Broad Knife, Flex	Labeled	2	5
622	6" Broad Knife, Flex	Labeled	2	5

ROSEWOOD SERIES - FULL FLEX

Full Flex applies to blades that have been hollow-ground thinner for maximum flexibility. They are designed for lighter compounds and higher application rates. Ideal for finish- or final-coat applications.



FULL FLEX



Item No.	Description	Type of Packaging	Pack Weight	Pack Qty.
604	3/4" Putty Knife, Full Flex	Labeled	2	5
621	1-1/4" Putty Knife, Full Flex	Labeled	2	5
627	1-1/2" Putty Knife, Full Flex	Labeled	2	5
628	2" Putty Knife, Full Flex	Labeled	2	5
633	3" Putty Knife, Full Flex	Labeled	3	5

ROSEWOOD SERIES - FULL FLEX



Item No.	Description	Type of Packaging	Pack Weight	Pack Qty.
635	4" Broad Knife, Full Flex	Labeled	2	5
636	5" Broad Knife, Full Flex	Labeled	2	5
637	6" Broad Knife, Full Flex	Labeled	2	5

DIY Series

Rugged, hardworking line for light-duty construction or home projects. Economical tools feature blades of spring stainless steel for easy spreading and easy cleanup. Rust-resistant, too. New improved handles are polypropylene to resist paint thinners and adhesive solvents during cleanup.

DIY SERIES - STIFF



Item No.	Description	Type of Packaging	Pack Weight	Pack Qty.
180	1-1/4" Putty Knife, Stiff	Labeled	1	10
181	3" Scraper, Stiff	Labeled	1	10
185	5-in-1 Glazier Knife, Stiff	Labeled	1	10

DIY SERIES - FLEX



Item No.	Description	Type of Packaging	Pack Weight	Pack Qty.
182	1-1/4" Putty Knife, Flex	Labeled	1	10
183	3" Putty Knife, Flex	Labeled	1	10

DIY SERIES - FLEX



Item No.	Description	Type of Packaging	Pack Weight	Pack Qty.
184	4" Broad Knife, Flex	Labeled	1	10
186	6" Broad Knife, Flex	Labeled	1	10

Plastic Series

High-value, low-cost spreaders are made of tough polystyrene. Made and priced to be perfect for one-time project use. Features a chisel edge to aid fine spreading or to allow light scraping on soft surfaces.

Plastic tools are perfect for one-time use, such as spreading tar, adhesive, roof caulking, wood putty or other difficult to clean materials.

PLASTIC SERIES - FLEX



Item No.	Description	Type of Packaging	Pack Weight	Pack Qty.
902	1-1/2" Putty Knife, Flex	Labeled	1	20
904	2" Putty Knife, Flex	Labeled	2	20
903	3" Putty Knife, Flex	Labeled	2	20



Item No.	Description	Type of Packaging	Pack Weight	Pack Qty.
905	4" Broad Knife, Flex	Labeled	2	20
901	6" Broad Knife, Flex	Labeled	2	20
8150	3-Pack Plastic Knives (#901, #902, #903)	Labeled	3	15

Painter's Series

Full-tang, precision-ground, mirror finish blade coated to prevent rust. Solvent-proof, durable plastic handle.

PAINTER'S SERIES



Item No.	Description	Type of Packaging	Pack Weight	Pack Qty.
503	3/4" Putty Knife, Chisel Ground, Stiff	Labeled	2	5
504	3/4" Putty Knife, Full Flex	Labeled	2	5
502	1-1/4" Putty Knife, Bent, Stiff	Labeled	2	5

PAINTER'S SERIES - STIFF



Item No.	Description	Type of Packaging	Pack Weight	Pack Qty.
10321	5-in-1 Glazier Knife, Stiff	Labeled	1	5
10323	3" Scraper, Stiff	Labeled	1	5
10327	1-1/2" Putty Knife, Stiff	Labeled	1	5
10328	1-1/4" Chisel Putty Knife, Stiff	Labeled	1	5

PAINTER'S SERIES - FLEX



Item No.	Description	Type of Packaging	Pack Weight	Pack Qty.
10320	1 1/2" Putty Knife, Flex	Labeled	1	5
10322	3" Putty Knife, Flex	Labeled	1	5
10324	4" Broad Knife, Hammer Cap,™ Flex	Labeled	2	5

PAINTER'S SERIES - FLEX



Item No.	Description	Type of Packaging	Pack Weight	Pack Qty.
10325	5" Broad Knife, Hammer Cap,™ Flex	Labeled	2	5
10326	6" Broad Knife, Hammer Cap,™ Flex	Labeled	2	5

Miscellaneous Putty Knives and Scrapers

Tang-driven putty knives feature high-quality carbon steel blades and comfortable wood handles.

Patcher is made of tempered steel and plated for corrosion resistance. Perfect for small areas.

MISCELLANEOUS PUTTY KNIVES AND SCRAPERS



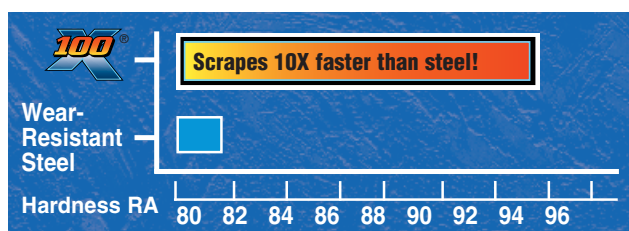
Item No.	Description	Type of Packaging	Pack Weight	Pack Qty.
465	1-1/8" Putty Knife, Tang-Driven, Flex	Labeled	1	10
466	3" Scraper, Tang-Driven, Stiff	Labeled	2	10
442	Patcher, Stiff	Labeled	2	10



100X[®] Paint Scrapers with Carbide Blades

How can a Carbide 100X[®] Blade be 10 times sharper than hardened steel? Simple. Warner uses a special grade of tungsten carbide on 100X[®] Paint Scrapers because it is extremely hard and durable. In fact, the softest grade of tungsten carbide composite starts where steel stops.

Carbide 100X[®] Blades are diamond-ground to produce an edge 10 times sharper than steel! These blades will scrape more paint faster and cleaner than any standard, hardened steel blade! That's the performance that has pushed 100X[®] paint scrapers to the top of the "most wanted" list in the Warner line. Softgrip handles include removable bit.



CARBIDE 100X[®] SCRAPERS



Item No.	Description	Type of Packaging	Pack Weight	Pack Qty.
803	2" Carbide 100X [®] Scraper	Carded	3	5
806	2-3/8" Carbide 100X [®] Scraper	Carded	3	5
808	1" Carbide 100X [®] Scraper	Carded	2	5

CARBIDE 100X[®] SCRAPERS WITH KNOB



Item No.	Description	Type of Packaging	Pack Weight	Pack Qty.
804	2" Carbide 100X [®] Scraper with Knob	Carded	3	5
807	2-3/8" Carbide 100X [®] Scraper with Knob	Carded	3	5

CARBIDE 100X[®] SCRAPERS - SOFTGRIP HANDLE



Item No.	Description	Type of Packaging	Pack Weight	Pack Qty.
10015	5/8" Round Softgrip Carbide 100X [®] Scraper	Labeled	3	5
10016	1" Triangle Softgrip Carbide 100X [®] Scraper	Labeled	3	5
10017	2" Softgrip Carbide 100X [®] Scraper	Labeled	3	5
10019	2-3/8" Softgrip Carbide 100X [®] Scraper	Labeled	3	5



Item No.	Description	Type of Packaging	Pack Weight	Pack Qty.
10018	2" Softgrip Carbide 100X [®] Scraper with Knob	Labeled	3	5
10020	2-3/8" Softgrip Carbide 100X [®] Scraper with Knob	Labeled	3	5

CARBIDE SCRAPER WITH PIVOT HANDLE



Item No.	Description	Type of Packaging	Pack Weight	Pack Qty.
10308	2-3/8" Carbide Scraper with Pivot Handle*	Labeled	2	5

* US Patent Number D555,856S.

CARBIDE 100X® REPLACEMENT BLADES



Item No.	Description	Type of Packaging	Pack Weight	Pack Qty.
824	5/8" Round Blade Carbide 100X®	Carded	1	10
828	1" Triangle Blade Carbide 100X®	Carded	1	10



Item No.	Description	Type of Packaging	Pack Weight	Pack Qty.
813	2" Double-Edge Blade Carbide 100X®	Carded	1	10
819	2" Double-Edge Blade Carbide 100X® Contractor Pack	Bulk	2	10
814	2-3/8" Double-Edge Blade Carbide 100X®	Carded	1	10
816	2-3/8" Double-Edge Blade Carbide 100X® Contractor Pack	Bulk	2	10

Affordable Scrapers and Blades

Good quality at an economical price. Ideal for light-duty, home projects and more. Rugged, comfortable-to-use scrapers have plastic PistolGrip™ handles that arch up for proper leverage. Blades are high-carbon steel, industrial-ground, easy to replace and can be re-sharpened as needed.

Choice of two or four scraping edges depending on blade type. Multiple scraping edges require less sharpening to help get more work done in less time.

2-EDGE STEEL BLADE PAINT SCRAPERS



Item No.	Description	Type of Packaging	Pack Weight	Pack Qty.
742	1" Scraper, 2-Edge Blade	Carded	1	5
740	1-3/4" Scraper, 2-Edge Blade	Carded	1	5
741	2-1/2" Scraper, 2-Edge Blade	Carded	2	5



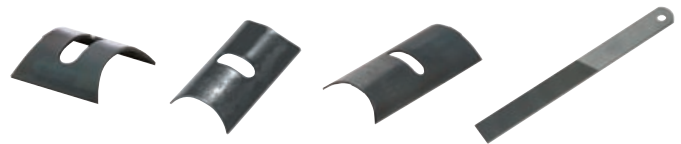
Item No.	Description	Type of Packaging	Pack Weight	Pack Qty.
818	1-3/4" Scraper, Short Handle, 2-Edge Blade	Carded	3	10
821	1-3/4" Scraper, 10-1/2" Metal Handle, 2-Edge Blade	Carded	4	10
822	2-1/2" Scraper, 12" Metal Handle, 2-Edge Blade	Carded	5	10

4-EDGE STEEL BLADE PAINT SCRAPERS



Item No.	Description	Type of Packaging	Pack Weight	Pack Qty.
730	1" Scraper, PistolGrip™, 4-Edge Blade	Carded	1	10
731	1-3/4" Scraper, PistolGrip™, 4-Edge Blade	Carded	1	5
732	2-1/2" Scraper, PistolGrip™, 4-Edge Blade	Carded	1	5
708	1-3/4" Scraper, PistolGrip™ with Knob, 4-Edge Blade	Carded	1	5
709	2-1/2" Scraper, PistolGrip™ with Knob, 4-Edge Blade	Carded	1	5

2- AND 4-EDGE REPLACEMENT BLADES



Item No.	Description	Type of Packaging	Pack Weight	Pack Qty.
810	1" Blades for #742, 2/Card	Carded	1	10
811	1-3/4" Blades for #740, #818 & #821, 2/Card	Carded	1	10
812	2-1/2" Blades for #741, #809 & #822, 2/Card	Carded	1	10
820	Blade Sharpener File	Carded	2	10



Item No.	Description	Type of Packaging	Pack Weight	Pack Qty.
710	1" Blades for #730, 2/Card	Carded	1	10
711	1-3/4" Blades for #708 & #731, 2/Card	Carded	1	10
712	2-1/2" Blades for #709 & #732, 2/Card	Carded	1	10

Specialty Scrapers

Warner molding scrapers are designed for curved surfaces around windows and doors. High-carbon steel blades are industrial-ground for maximum sharpness.

Scraper #805 offers a 5" wide blade—the widest on the market—and a pivoting head so scraping edges can be rotated easily. Comes with two 2-edge blades, as does the #809.

SPECIALTY SCRAPERS



Item No.	Description	Type of Packaging	Pack Weight	Pack Qty.
809	2-1/2" Scraper, Pivot Head, 12" Handle	Carded	6	10
805	5" Scraper, Pivot Head, 12" Wood Handle	Carded	1	5
10100	Utility Scraper with Combo, Radius and Straight Blades	Carded	2.5	5



Item No.	Description	Type of Packaging	Pack Weight	Pack Qty.
393	3" Plastic Refinishing Tool	Labeled	1	10
10108	3-in-1 Stripping Brush	Labeled	2	5

SPECIALTY SCRAPER REPLACEMENT BLADES



Item No.	Description	Type of Packaging	Pack Weight	Pack Qty.
812	2-1/2" Blade for #741, #809 & #822, 2/Card	Carded	1	10
817	5" Blade for #805, 2/Card	Carded	1	10
820	Blade Sharpener File	Carded	2	10



Item No.	Description	Type of Packaging	Pack Weight	Pack Qty.
10105	Replacement Combo Blade for #10100	Carded	1	10
10106	Replacement Radius Blade for #10100	Carded	1	10
10118	Replacement Straight Blade for #10100	Carded	1	10

Heavy-Duty Scrapers for Special Applications

Warner burn-off scrapers feature thick, tempered steel blades with a chisel edge. Bent blades or longer wood handles keep fingers away from hot surfaces or chemicals.

HEAVY-DUTY SCRAPERS



Item No.	Description	Type of Packaging	Pack Weight	Pack Qty.
386	3" Scraper, Bent Burn-Off, 3-3/4" Handle, Stiff	Labeled	2	5
387	3" Scraper, Bent Burn-Off, 6-3/4" Handle, Stiff	Labeled	4	5
388	3" Scraper, Straight Burn-Off, 6-3/4" Handle, Stiff	Labeled	4	5

Threaded Scrapers

Warner threaded scrapers attach to a choice of extension poles for overhead and hard-to-reach scraping jobs. Professional painters, maintenance crews and window cleaners use Warner pole accessories to save time and do a better job.

THREADED SCRAPERS



Item No.	Description	Type of Packaging	Pack Weight	Pack Qty.
397	3" Easy Reach™ Bent Scraper, Threaded Handle, High-Carbon Steel	Carded	3	6
398	3" Easy Reach™ Scraper, Threaded Handle, High-Carbon Steel	Carded	3	6
657	6" Easy Reach™ Bent Scraper, Threaded Handle, High-Carbon Steel, Stiff	Labeled	2	6

Electric Paint Remover

Provides 1,000 watts of concentrated heat in a 6-1/2" x 3-1/2" heating surface to soften nearly 23 square inches of paint at a time. Features open shield door to get under edge of siding, plus a flip-over resting stand, cool plastic handle and three-wire ground cord. 120V, 8.4 Amp. U.L. Listed – CSA in Canada.

ELECTRIC PAINT REMOVER



Item No.	Description	Type of Packaging	Pack Weight	Pack Qty.
382	Electric Paint Remover, 1,000 Watt	Boxed	2	1

Strip 'N' Clean™ Scrapers for the Biggest, Toughest Jobs

Heavy-duty scrapers are made for professionals tackling big scraping jobs—from paint to floor tile. Great for removing adhesives, ceramic wall tile, asphalt tile, carpeting and various industrial applications. Featuring die-cast aluminum scraping heads for maximum blade rigidity and handles of steel or fiberglass with comfortable nonslip grips. The #798 head-only scraper can be used with any standard threaded pole.

STRIP 'N' CLEAN™ SCRAPERS



Item No.	Description	Type of Packaging	Pack Weight	Pack Qty.
790	4" Strip 'N' Clean™ Scraper, 12" Steel Softgrip Handle, Hammer Cap™	Carded	5	4
791	4" Strip 'N' Clean™ Scraper, 18" Steel Handle with Rubber Grip	Carded	8	4
792	4" Strip 'N' Clean™ Scraper, 48" Steel Handle	Carded	15	4



Item No.	Description	Type of Packaging	Pack Weight	Pack Qty.
797	4" Strip 'N' Clean™ Floor Scraper, 54" Fiberglass Handle	Carded	14	4
798	4" Strip 'N' Clean™ Floor Scraper Head, Threaded (Head Only)	Carded	4	5
799	6" Strip 'N' Clean™ Floor Scraper, 54" Steel Handle	Carded	16	4

STRIP 'N' CLEAN™ REPLACEMENT BLADES



Item No.	Description	Type of Packaging	Pack Weight	Pack Qty.
793	4" Strip 'N' Clean™ Blade, Blue Steel, Double-Edge	Carded	2	5
794	6" Strip 'N' Clean™ Blade, Blue Steel, Single-Edge	Carded	3	5
795	8" Strip 'N' Clean™ Blade, Blue Steel, Single-Edge	Carded	4	5

4" and 5" Scrapers

Industrial-ground carbon steel blades and big, beefy scrapers can take on practically any scraping job. Tools are designed to deliver maximum leverage on wall and floor surfaces. Multipurpose scrapers tackle anything from wax buildup to dried adhesives. Scraper #690 is a popular tool used in a wide variety of industries.

Scrapers are packaged with the blunt edge of the blade exposed for safety. Reverse the blade to expose the sharp edge.

BIG BLADE SCRAPERS

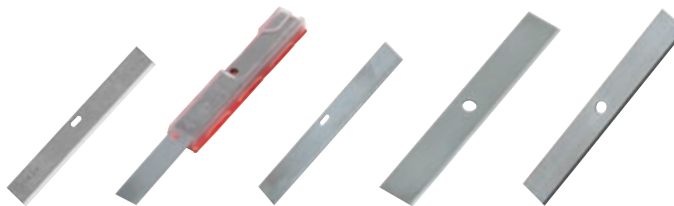


Item No.	Description	Type of Packaging	Pack Weight	Pack Qty.
691	4" Big Blade Scraper, 5" Steel Handle	Carded	4	10
690	4" Big Blade Scraper, 9" Steel Handle	Carded	5	10
693	4" Big Blade Scraper, 48" Steel Handle	Carded	10	5



Item No.	Description	Type of Packaging	Pack Weight	Pack Qty.
590	5" Heavy-Duty Scraper, 12" Steel Handle	Carded	6	5
591	5" Heavy-Duty Scraper, 48" Steel Handle	Carded	10	5

BIG BLADE REPLACEMENT BLADES



Item No.	Description	Type of Packaging	Pack Weight	Pack Qty.
695	4" Big Blade Scraper Blades for #680, #690, #691 & #693, 5/Card	Carded	1	10
698	4" Big Blade Scraper Blade Dispenser for #680, #690, #691 & #693 (Carton of 100 = 10 Cards of 10 Blades)	Boxed	2	10
699	4" Big Blade Scraper Blades for #680, #690, #691 & #693 Carton of 100/Bulk	Boxed	2	1
595	5" Scraper Blades for #590 & #591, 5/Card	Carded	2	10
599	5" Scraper Blades for #590 & #591, 50/Bulk	Boxed	2	1

Glass Scrapers

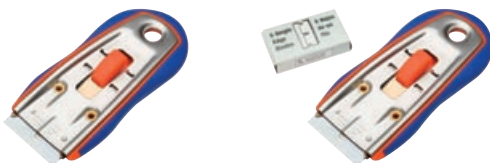
All of the Safety 1st™ scrapers in the Warner line have been designed to minimize risk with quick and convenient blade-changing features. Warner is the only company with all safety-style blade-changing systems. Used for a variety of light-duty scraping jobs, from scraping paint off windows to scraping off decals.

SAFETY 1ST™ SCRAPERS



Item No.	Description	Type of Packaging	Pack Weight	Pack Qty.
100	3-1/2" Safety 1st™ Glass Scraper with 1 Blade	Carded	2	10
356	Safety 1st™ Utility Scraper with 1 Utility Blade	Carded	2	10
105	Safety 1st™ Scraper with 1 Single-Edge Razor Blade	Carded	2	10
103	Safety 1st™ Scraper with 5 Single-Edge Razor Blades	Carded	2	10
130	Safety 1st™ Razor Scraper, 50/Bucket, #105	Bucket	7	1

PREMIUM SAFETY 1ST™ SCRAPERS



Item No.	Description	Type of Packaging	Pack Weight	Pack Qty.
10500	Safety 1st™ Soft-Grip Safety Glass Scraper with 1 Single-Edge Razor Blade	Carded	2	10
10300	Safety 1st™ Soft-Grip Safety Glass Scraper with 5 Single-Edge Razor Blades	Carded	2	10

SAFETY 1ST™ REPLACEMENT BLADES



Item No.	Description	Type of Packaging	Pack Weight	Pack Qty.
99	3-1/2" Safety 1st™ Scraper Blades, 5/Card	Carded	1	10
360	Utility Blades, 5/Card	Carded	1	10
361	Utility Blades, 100 Single-Wrapped	Boxed	1	1

Razor Scrapers and Blades

Single-edge blades are made to Warner's industrial specifications of high-carbon steel, .009" thick. Blades are ground, honed and tempered for durability.

RAZOR SCRAPERS



Item No.	Description	Type of Packaging	Pack Weight	Pack Qty.
114	Plastic Neon Razor Blade Holder and Blade, 1/Card	Carded	1	20
101	Plastic Neon Blade Holder and Blade, 50/Bucket, #114	Bucket	2	1
10266	Blade Holder with Plastic Blade	Carded	2	20
10312	Blade Holder with Plastic Blade, 25/Bucket, #10266 Carded	Bucket	2	1

RAZOR BLADES



Item No.	Description	Type of Packaging	Pack Weight	Pack Qty.
109	Razor Blades, 100 Single-Wrapped	Boxed	1	1
110	Razor Blades, 10/Card	Carded	1	10
10092	Handy Pack, 10 Pk	Box	1	10
112	100 Razor Blades, Bulk in Plastic Container, Pegable	Plastic Tub	8	1



Item No.	Description	Type of Packaging	Pack Weight	Pack Qty.
129	Plastic Dispenser of Single-Edge Blades (10 Blades)	Plastic Dispenser	12	10
113	Dispenser of Razor Blade 5-Packs (10 Packs of 5 = 50 Blades)	Boxed	1	1
108	Display Carton of 5/Pack Razor Blades (20 Packs of 5 = 100 Blades)	Boxed	1	1
102	Bucket of 5/Pack Razor Blades (100 Packs of 5 = 500 Blades)	Bucket	5	1

10-in-1 Folding Tool

It's another Warner innovation—performance that you carry in your pocket. This patented tool features a stainless steel blade in a secure lockback system. It has a reversible thumb knob for one-hand easy opening and a spring-loaded lock for closing.

Nylon handle resists chemicals and solvents and is textured for a nonslip grip. End cap is nickel-plated steel for setting nails or light hammering.

FOLDING TOOL



Item No.	Description	Type of Packaging	Pack Weight	Pack Qty.
689	The Painter's Blade® 10-in-1 Folding Tool	Carded	2	5

Hawkbill Knives

Flooring knives for linoleum and vinyl flooring feature hawkbill blades and turned hardwood handles. Both have high-carbon cutlery steel blades.

HAWKBILL KNIVES



Item No.	Description	Type of Packaging	Pack Weight	Pack Qty.
170	2-1/2" Long-Point Flooring Knife, .075" Thick Blade, Wood Handle	Carded	2	10
370	2-1/2" Blade Flooring Knife, .050" Thick Blade, Wood Handle	Carded	3	10

Snap-Off Blade Knives

Snap-off blade knives offer multiple cutting edges with a locking thumb advance mechanism so a fresh blade is instantly available. Just snap-off the old blade to expose a fresh, sharp edge.

SNAP-OFF BLADE KNIVES

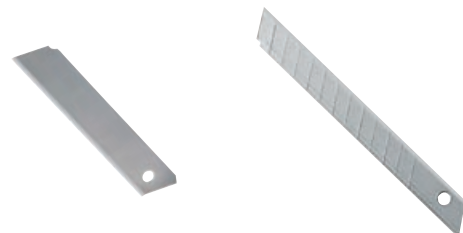


Item No.	Description	Type of Packaging	Pack Weight	Pack Qty.
117	Trigger Action Snap-Off Blade Knife with 1 Blade, 13-Points	Carded	2	10
119	Heavy-Duty Snap-Off Blade Knife with 1 Blade, 8-Points	Carded	3	10
124	Hobby Knife, Snap-Off Blade with 1 Blade, 13-Points	Carded	2	10



Item No.	Description	Type of Packaging	Pack Weight	Pack Qty.
1034	Hobby Knife, Snap-Off Blade, 48/Counter Display, 13-Points	Boxed	1	1
125	Hobby Knife, Snap-Off Blade, 40/Bucket, #124, 13-Points	Bucket	2	1

SNAP-OFF REPLACEMENT BLADES



Item No.	Description	Type of Packaging	Pack Weight	Pack Qty.
120	Heavy-Duty Snap-Off Blade for #119, 5/Card, 8-Points	Carded	1	10
116	13-Point Snap-Off Blade for #124, 5/Card, 13-Points	Carded	1	10



Fiberglass and Aluminum Poles

High-quality Pro-X-Tend™ adjustable extension poles are a combination of fiberglass and aluminum, making them lightweight and incredibly durable. Poles feature standard 3/4" adapter thread and a lever lock to prevent aluminum inner pole from twisting. Two-piece poles extend to double their retracted length.

FIBERGLASS AND ALUMINUM POLES



Item No.	Description	Type of Packaging	Pack Weight	Pack Qty.
90724	2'-4' Pro-X-Tend™ Pole, Fiberglass/Aluminum, Lever Lock	Labeled	8	6
90726	3'-6' Pro-X-Tend™ Pole, Fiberglass/Aluminum, Lever Lock	Labeled	10	6
90728	4'-8' Pro-X-Tend™ Pole, Fiberglass/Aluminum, Lever Lock	Labeled	14	6
90722	6'-12' Pro-X-Tend™ Pole, Fiberglass/Aluminum, Lever Lock	Labeled	19	6
90736	8'-16' Pro-X-Tend™ Pole, Fiberglass/Aluminum, Lever Lock	Labeled	25	6

Steel Poles

Handy extension poles are made of tough steel tubing and are an excellent value. End-cap adapter is nylon and fits standard 3/4" thread accessories. Twist lock secures adjustable poles at any point out to full extension.

STEEL POLES



Item No.	Description	Type of Packaging	Pack Weight	Pack Qty.
145	2-1/2'-5' Steel Pole, Adjustable, Male Thread, Twist Lock	Labeled	9	12
146	4' Steel Pole, Fixed, Male Thread	Labeled	8	12
262	4'-6-1/2' Steel Pole, Adjustable, Male Thread, Twist Lock	Labeled	12	10

Pole Adapters

The Angled and Straight Threaded Adapters have a lightweight, threaded handle with a textured grip. Aluminum bracket securely holds knife to handle. Can be used with Warner Knock Down Knives 10302-10306; Warner Spray Shields 305, 308, 419, 10045, 10049, 10050-10053, 10125 and 10198; and Warner Pro-X-Tend™ Extension Poles 90722, 90724, 90726, 90728 and 90736. The Brush Extension fits all standard brushes and extension poles and is fully adjustable to any position.

POLE ADAPTERS



Item No.	Description	Type of Packaging	Pack Weight	Pack Qty.
10342	Angled Threaded Adapter	Carded	3	4
10343	Straight Threaded Adapter	Carded	3	4
10263	Brush Extension	Carded	4	5

Keeping Things Clean and Neat

Warner provides just what you need for keeping work areas clean and for taking care of brushes and rollers. Brush combs and roller cleaners increase the service life of brushes and rollers and keeps them performing like new.

BRUSH AND ROLLER CLEANERS



Item No.	Description	Type of Packaging	Pack Weight	Pack Qty.
269	Brush Comb and Roller Cleaner	Labeled	2	10
279	Brush and Roller Cleaner	Carded	2	12
380	Brush and Roller Cleaner, Spins Brushes/Rollers Clean	Labeled	8	4

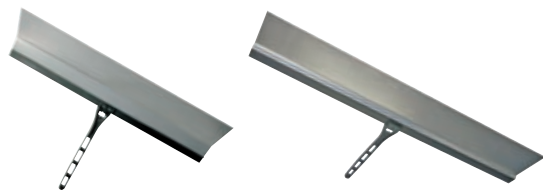
Spray Shields

Spray shields provide protection when painting or finishing. They are lightweight to minimize fatigue and are easy to clean. 18" plastic handles with plastic or aluminum blades.

SPRAY SHIELDS



Item No.	Description	Type of Packaging	Pack Weight	Pack Qty.
10045	24" Aluminum Spray Shield, 18" Plastic Handle	Labeled	8	5
419	36" Aluminum Spray Shield, 18" Plastic Handle	Labeled	3	5
10125	48" Aluminum Spray Shield, 18" Plastic Handle	Labeled	8	5



Item No.	Description	Type of Packaging	Pack Weight	Pack Qty.
10053	36" Bent Aluminum Spray Shield, 18" Plastic Handle	Labeled	8	5
10198	48" Bent Aluminum Spray Shield, Stiff Blade, 18" Plastic Handle	Labeled	14	5



Item No.	Description	Type of Packaging	Pack Weight	Pack Qty.
305	24" Plastic Spray Shield, 18" Plastic Handle	Labeled	5	5
308	36" Plastic Spray Shield, 18" Plastic Handle	Labeled	8	5



Item No.	Description	Type of Packaging	Pack Weight	Pack Qty.
10049	24" Aluminum Spray Shield with Adjustable Handle	Labeled	9	5
10050	36" Aluminum Spray Shield with Adjustable Handle	Labeled	10	5
10051	24" Plastic Spray Shield with Adjustable Handle	Labeled	9	5
10052	36" Plastic Spray Shield with Adjustable Handle	Labeled	10	5



Item No.	Description	Type of Packaging	Pack Weight	Pack Qty.
10187	Plastic Spray Shield Holder	Labeled	3	5
10179	Cardboard for Spray Shield Holder #10187	Labeled	14	50

Paint and Trim Guides

Thin, flat paint guides help give you a perfect edge. They protect molding, trim and non-painted surfaces from spatter and over-painting.

PAINT AND TRIM GUIDES



Item No.	Description	Type of Packaging	Pack Weight	Pack Qty.
428	12" Paint Guide and Wallcovering Tool	Labeled	3	10
433	23" Paint Guide and Wallcovering Tool	Labeled	6	10
431	Triple-Edge Guide, Plastic	Labeled	3	10
435	7-3/4" x 6-1/4" x 9-7/8" Paint 'N' Trim™ Guide, Metal	Labeled	2	10

PAINT AND TRIM GUIDES



Item No.	Description	Type of Packaging	Pack Weight	Pack Qty.
434	10" Paint Guide	Labeled	2	20
432	15" Paint Guide	Labeled	2	20
20147	12" Blue Plastic Paint Guide	Labeled	2	20

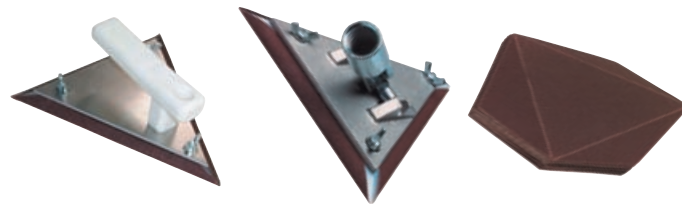
Sanders

Sanding blocks are perfect for quick touch-ups or light-duty projects around the house.

SANDERS



Item No.	Description	Type of Packaging	Pack Weight	Pack Qty.
436	Plastic Sanding Block with Sandpaper	Carded	3	10
336	Rubber Sanding Block	Carded	3	5
10307	Quick-Change Sanding Block	Carded	3	10
10310	2-in-1 Hand/Pole Sander*	Carded	2	4



Item No.	Description	Type of Packaging	Pack Weight	Pack Qty.
373	Tri-Pad® Hand Sander	Labeled	3	5
337	Tri-Pad® Pole Sander, Head Only, Female Threaded	Labeled	4	5
392	Tri-Pad® Replacement Sandpaper, 120 Grit, 25 Sheets/Pack	Wrapped	1	1

Pry Bars

Rugged tools help remove molding and trim fast and easy. Every toolbox needs one of these pry bars.

PRY BARS



Item No.	Description	Type of Packaging	Pack Weight	Pack Qty.
443	9-1/2" Pry Bar	Labeled	5	10
743	7-1/2" Mini Pry Bar	Labeled	3	10
10350	Painter's Pry Bar	Labeled	4	5

Plastic Buckets

Warner offers a variety of buckets ideal for all maintenance and construction projects. Economical buckets make work go faster and cleanup easier.

BUCKETS AND OPENERS



Item No.	Description	Type of Packaging	Pack Weight	Pack Qty.
543	5-Gallon Plastic Bucket, .070 Wall Thickness	Labeled	20	10
549	5-Quart Plastic Bucket, Steel Rim	Labeled	11	20
550	5-Quart Promotional Plastic Bucket	Labeled	7	50



Item No.	Description	Type of Packaging	Pack Weight	Pack Qty.
10056	5-Quart Container	Labeled	25	100
10059	5-Quart Container Lid	Labeled	3	50



Item No.	Description	Type of Packaging	Pack Weight	Pack Qty.
556	Plastic Bucket Opener	Labeled	3	10
144	3-in-1 Bucket Opener, Cast Aluminum	Labeled	4	5
683	ProGrip® 4-in-1 Bucket Opener	Labeled	2	5
1283	ProGrip® 4-in-1 Bucket Opener, 5/Counter Display, #683	Boxed	2	1



Item No.	Description	Type of Packaging	Pack Weight	Pack Qty.
10000	Wire Paint Can Openers, 2-Pack	Carded	1	5
260	Wire Paint Can Opener, 100/Bulk	Boxed	10	100
176	5-Gallon Bucket Brush	Labeled	4	4

Mixers

Use heavy-duty mixing blades for paint, drywall compound, adhesive, driveway coatings and other viscous materials. All have steel shafts for 1/2" or 3/8" drills except the mud masher, which is used for hand mixing. Mixer heads reach to the bottom of the bucket. Model #345 mixer with twin propeller blades has an adjustable upper blade.

MIXERS



Item No.	Description	Type of Packaging	Pack Weight	Pack Qty.
204	5-Gallon 5-1/2" Inverted Blade Mixer, 32" Hex Shaft, Fits 1/2" Drill	Labeled	3	1
342	Mud Masher, Hand Mixer, 28" Handle	Labeled	10	5
345	Mixer, 5" Twin Propeller Blades, 25" Hex Shaft, Fits 1/2" Drill	Labeled	9	5
347	5-Gallon Mixer, 8-1/4" Dual Propeller Blade, 36" Hex Shaft, Fits 1/2" Drill	Carded	12	5
344	5-Gallon Mixer, 8-1/4" Dual Propeller Blade, 30" Hex Shaft, Fits 1/2" Drill	Carded	11	5



Item No.	Description	Type of Packaging	Pack Weight	Pack Qty.
10330	1-Gallon Plastic Paint Mixer, 9-1/2" Round Metal Shaft, Fits 3/8" Drill	Labeled	1	6
10331	5-Gallon Plastic Paint Mixer, 15" Round Metal Shaft, Fits 3/8" Drill	Labeled	3	6
446	5-Gallon, 2" Plastic Paint Mixer, 15" Round Metal Shaft, Fits 3/8" Drill	Labeled	4	10
447	1-Gallon, 2" Plastic Paint Mixer, 9-1/2" Round Metal Shaft, Fits 3/8" Drill	Labeled	3	10



Item No.	Description	Type of Packaging	Pack Weight	Pack Qty.
340	2-Gallon Paint Mixer, 2-1/4" Spiral Blade, 17-3/4" Hex Shaft, Fits 3/8" Drill	Carded	10	6
10011	1- to 5-Gallon Paint/Epoxy 1-3/4" Spiral Blade, 17" Hex Shaft, Fits 3/8" Drill	Labeled	4	6
10121	5-Gallon Paint Mixer, 3-1/4" Spiral Blade, 19" Hex Shaft, Fits 3/8" Drill	Labeled	4	6
341	5-Gallon Paint Mixer, 4" Spiral Blade, 23-1/2" Hex Shaft, Fits 1/2" Drill	Carded	16	6

MISCELLANEOUS



Item No.	Description	Type of Packaging	Pack Weight	Pack Qty.
411	Swivel Pot Hook	Carded	2	10
412	6" Handy Pot Hooks, 2/Label	Carded	2	10
468	Tack Cloth	Bagged	4	10



Item No.	Description	Type of Packaging	Pack Weight	Pack Qty.
10031	Super Soft Knee Pads	Labeled	8	12



Item No.	Description	Type of Packaging	Pack Weight	Pack Qty.
439	"Bender" Paint Pad with 9" Flex Handle for Hard-to-Reach Areas	Labeled	1	10
16	1/4" Round Graining Tool	Carded	2	10
414	QuickTruss Door Stand, 6/Card	Carded	5	3

Surface Prep and Applicator Brushes

Wire brushes remove rust, scale and flaking paint. Also for roughing smooth surfaces before applying adhesives.

BRUSHES



Item No.	Description	Type of Packaging	Pack Weight	Pack Qty.
572	Mini Brush Set, 3-Piece, Stainless Steel, Brass and Nylon	Bagged	2	12
10024	Mini Brush Set, 2-Piece, Brass	Bagged	1	24
10025	Mini Brush Set, 2-Piece, Stainless Steel	Bagged	1	24

Mini-Rollers

Warner paint roller covers are made to fit virtually all mini-roller frames using a 6 mm rod and come with an easy-to-use plastic core that slides over the rod. Our roller fabrics are secured to the core using a special process and stand up to water and solvents without damage. Warner rollers produce great results quickly and easily with just about any type of paint or material.

Making the Right Choice

SURFACE/PROJECT	FABRIC
Metals, Cabinets, Trim	Smoothfoam™
Doors, Cabinets, Furniture	Veri-Smooth™
Walls, Closets, Siding	Profab™
Stains, Sidings, Waterproofing	Ultra-Sorb™
Walls, General Purpose	EZ-Roll™

SMOOTHFOAM™ – ULTRA-SMOOTH SURFACES

High-density foam mini-roller offering outstanding rollout results with a variety of coatings. The domed-end reduces bubbling and line marks caused by square-ended rollers, producing cleaner, clearer finishes. Use with varnishes, urethanes and low-viscosity enamels.



Item No.	Description	Type of Packaging	Pack Weight	Pack Qty.
20203	2" Smoothfoam™ Roller, 6" Frame, 1 Pk	Carded	2	6
20201	4" Smoothfoam™ Roller, 12" Frame, 1 Pk	Carded	2	6
20202	6" Smoothfoam™ Roller, 12" Frame, 1 Pk	Carded	3	6



Item No.	Description	Type of Packaging	Pack Weight	Pack Qty.
20204	2" Smoothfoam™ Roller Covers, 2 Pk	Bagged	1	8



Item No.	Description	Type of Packaging	Pack Weight	Pack Qty.
20205	4" Smoothfoam™ Roller Covers, 2 Pk	Bagged	1	8
20207	4" Smoothfoam™ Roller Covers, 6 Pk	Bagged	2	5
20209	4" Smoothfoam™ Roller Covers, 10 Pk Clamshell		3	5
20230	4" Smoothfoam™ Roller Covers, 50 Pk	Carton	3	1



Item No.	Description	Type of Packaging	Pack Weight	Pack Qty.
20206	6" Smoothfoam™ Roller Covers, 2 Pk	Bagged	1	8
20208	6" Smoothfoam™ Roller Covers, 6 Pk	Bagged	2	5
20210	6" Smoothfoam™ Roller Covers, 10 Pk Clamshell		4	5
20231	6" Smoothfoam™ Roller Covers, 50 Pk	Carton	4	1

VERI-SMOOTH™ – SMOOTH SURFACES

Velour mini-roller that consistently delivers uncompromising finishes on smooth surfaces like doors, cabinets, furniture and trims. Achieve beautiful, lasting results with enamels, varnishes and urethanes.



Item No.	Description	Type of Packaging	Pack Weight	Pack Qty.
20451	4" Veri-Smooth™ Roller, 12" Frame, 1/4" Nap, 1 Pk	Carded	2	6
20452	6" Veri-Smooth™ Roller, 12" Frame, 1/4" Nap, 1 Pk	Carded	3	6



Item No.	Description	Type of Packaging	Pack Weight	Pack Qty.
20454	4" Veri-Smooth™ Roller Covers, 2 Pk, 1/4" Nap	Bagged	1	8

VERI-SMOOTH™ – SMOOTH SURFACES



Item No.	Description	Type of Packaging	Pack Weight	Pack Qty.
20455	6" Veri-Smooth™ Roller Covers, 2 Pk, 1/4" Nap	Bagged	1	8



Item No.	Description	Type of Packaging	Pack Weight	Pack Qty.
20453	6" Veri-Smooth™ Jumbo Roller Cover, 1 Pk, 1/4" Nap	Bagged	1	6

PROFAB™ – TEXTURED SURFACES

Covered-end rollers that utilize durable, resilient polyamide fibers that load and release paints with excellent results on surfaces from interior textured walls to exterior application, including soffit and trim boards. Best used with primers, flat paints, stains and adhesives.



Item No.	Description	Type of Packaging	Pack Weight	Pack Qty.
20301	4" Profab™ Roller, 12" Frame, 1 Pk, 1/2" Nap	Carded	2	6
20302	6" Profab™ Roller, 12" Frame, 1 Pk, 1/2" Nap	Carded	3	6



Item No.	Description	Type of Packaging	Pack Weight	Pack Qty.
20303	4" Profab™ Roller Covers, 2 Pk, 1/2" Nap	Bagged	1	8
20304	4" Profab™ Roller Covers, 2 Pk, 3/4" Nap	Bagged	1	8
20308	4" Profab™ Roller Covers, 6 Pk, 1/2" Nap	Bagged	2	6
20309	4" Profab™ Roller Covers, 6 Pk, 3/4" Nap	Bagged	2	6
20312	4" Profab™ Roller Covers, 10 Pk, 1/2" Nap	Clamshell	3	10
20330	4" Profab™ Roller Covers, 50 Pk, 1/2" Nap	Carton	3	1



Item No.	Description	Type of Packaging	Pack Weight	Pack Qty.
20305	6" Profab™ Roller Covers, 2 Pk, 1/2" Nap	Bagged	1	8
20306	6" Profab™ Roller Covers, 2 Pk, 3/4" Nap	Bagged	1	8
20310	6" Profab™ Roller Covers, 6 Pk, 1/2" Nap	Bagged	2	6
20311	6" Profab™ Roller Covers, 6 Pk, 3/4" Nap	Bagged	2	6
20313	6" Profab™ Roller Covers, 10 Pk, 1/2" Nap	Clamshell	4	10
20314	6" Profab™ Roller Covers, 10 Pk, 3/4" Nap	Clamshell	4	5
20331	6" Profab™ Roller Covers, 50 Pk, 1/2" Nap	Carton	3	1



Item No.	Description	Type of Packaging	Pack Weight	Pack Qty.
20307	6" Profab™ Jumbo Roller Cover, 1 Pk, 1/2" Nap	Bagged	1	6

ULTRA-SORB™ – MICROFIBER-THIN COATINGS

Ultra-absorbent microfiber mini-roller that offers even distribution of thinner paints, stains and oil-based materials. Cover up to 2 times more surface area than other rollers with no stippling or drips on textured and rough surfaces.



Item No.	Description	Type of Packaging	Pack Weight	Pack Qty.
20351	4" Ultra-Sorb™ Roller, 12" Frame, 1 Pk	Carded	2	6
20352	6" Ultra-Sorb™ Roller, 12" Frame, 1 Pk	Carded	3	6

ULTRA-SORB™ — MICROFIBER-THIN COATINGS



Item No.	Description	Type of Packaging	Pack Weight	Pack Qty.
20354	4" Ultra-Sorb™ Roller Covers, 2 Pk	Bagged	1	8
20356	4" Ultra-Sorb™ Roller Covers, 6 Pk	Bagged	2	6



Item No.	Description	Type of Packaging	Pack Weight	Pack Qty.
20355	6" Ultra-Sorb™ Roller Covers, 2 Pk	Bagged	1	8
20357	6" Ultra-Sorb™ Roller Covers, 6 Pk	Bagged	2	6



Item No.	Description	Type of Packaging	Pack Weight	Pack Qty.
20353	6" Ultra-Sorb™ Jumbo Roller Cover, 1 Pk, 1/2" Nap	Bagged	1	6

EZ-ROLL™ — MULTI-SURFACES

Button-end knit mini-rollers are the multi-purpose, shed-resistant solution for applying a broad range of paints on smooth, semi-smooth and textured surfaces. Use with all paints, stains and varnishes.



Item No.	Description	Type of Packaging	Pack Weight	Pack Qty.
20401	4" EZ-Roll™ Roller, 12" Frame, 1 Pk, 3/8" Nap	Carded	2	6
20402	6" EZ-Roll™ Roller, 12" Frame, 1 Pk, 3/8" Nap	Carded	3	6
20412	6" EZ-Roll™ Roller, 12" Frame, 1 Pk, 1/2" Nap	Carded	3	6



Item No.	Description	Type of Packaging	Pack Weight	Pack Qty.
20403	4" EZ-Roll™ Roller Covers, 2 Pk, 1/4" Nap	Bagged	1	8
20404	4" EZ-Roll™ Roller Covers, 2 Pk, 3/8" Nap	Bagged	1	8
20417	4" EZ-Roll™ Roller Covers, 2 Pk, 1/2" Nap	Bagged	1	8
20407	4" EZ-Roll™ Roller Covers, 6 Pk, 1/4" Nap	Bagged	2	6
20408	4" EZ-Roll™ Roller Covers, 6 Pk, 3/8" Nap	Bagged	2	6
20430	4" EZ-Roll™ Roller Covers, 50 Pk, 1/2" Nap	Carton	3	1



Item No.	Description	Type of Packaging	Pack Weight	Pack Qty.
20405	6" EZ-Roll™ Roller Covers, 2 Pk, 1/4" Nap	Bagged	1	8
20406	6" EZ-Roll™ Roller Covers, 2 Pk, 3/8" Nap	Bagged	1	8
20413	6" EZ-Roll™ Roller Covers, 2 Pk, 1/2" Nap	Bagged	1	8
20418	6" EZ-Roll™ Roller Covers, 6 Pk, 1/4" Nap	Bagged	2	6
20409	6" EZ-Roll™ Roller Covers, 6 Pk, 3/8" Nap	Bagged	2	6
20414	6" EZ-Roll™ Roller Covers, 6 Pk, 1/2" Nap	Bagged	2	6
20410	6" EZ-Roll™ Roller Covers, 10 Pk, 1/4" Nap	Clamshell	4	10
20411	6" EZ-Roll™ Roller Covers, 10 Pk, 3/8" Nap	Clamshell	4	10
20415	6" EZ-Roll™ Roller Covers, 10 Pk, 1/2" Nap	Clamshell	4	5
20431	6" EZ-Roll™ Roller Covers, 50 Pk, 1/2" Nap	Carton	4	1



Item No.	Description	Type of Packaging	Pack Weight	Pack Qty.
20416	6" EZ-Roll™ Jumbo Roller Cover, 1 Pk, 1/2" Nap	Bagged	1	6

KITS AND FRAMES



Item No.	Description	Type of Packaging	Pack Weight	Pack Qty.
20518	Smoothfoam™ 3-Piece Roller Kit, 2" Cover	Shrinkwrapped	3	8
20511	Smoothfoam™ 3-Piece Roller Kit, 4" Cover	Shrinkwrapped	3	6
20512	Smoothfoam™ 3-Piece Roller Kit, 6" Cover	Shrinkwrapped	4	5
20513	Profab™ 3-Piece Roller Kit, 4" Cover, 1/2" Nap	Shrinkwrapped	3	6
20514	Profab™ 3-Piece Roller Kit, 6" Cover, 1/2" Nap	Shrinkwrapped	4	5



Item No.	Description	Type of Packaging	Pack Weight	Pack Qty.
20515	7-Piece Roller Kit, 4" Smoothfoam™ and 1/2" Nap Profab™ Covers	Shrinkwrapped	5	5
20516	7-Piece Roller Kit, 6" Smoothfoam™ and 1/2" Nap Profab™ Covers	Shrinkwrapped	5	5



Item No.	Description	Type of Packaging	Pack Weight	Pack Qty.
20502	8" Mini-Roller Frame, Fits 4" Cover, 1 Pk	Labeled	2	8

DOUBLE DIAMOND™ ROLLER FRAMES



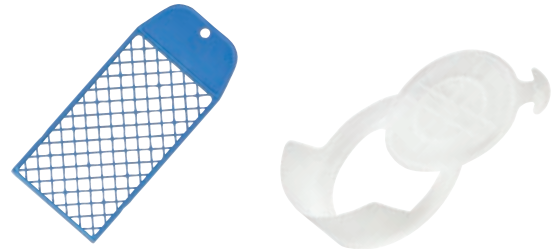
Item No.	Description	Type of Packaging	Pack Weight	Pack Qty.
20503	12" Soft-Grip Mini-Roller Frame, Fits 4" Cover, 1 Pk	Carded	3	8
20504	12" Soft-Grip Mini-Roller Frame, Fits 6" Cover, 1 Pk	Carded	3	8
20505	16" Soft-Grip Mini-Roller Frame, Fits 4" Cover, 1 Pk	Carded	3	8
20506	16" Soft-Grip Mini-Roller Frame, Fits 6" Cover, 1 Pk	Carded	4	8
20507	24" Soft-Grip Mini-Roller Frame, Fits 4" Cover, 1 Pk	Carded	4	8
20508	24" Soft-Grip Mini-Roller Frame, Fits 6" Cover, 1 Pk	Carded	5	8

ROLLER TRAYS AND PAINT TOTE



Item No.	Description	Type of Packaging	Pack Weight	Pack Qty.
20517	2" Solvent-Resistant Roller Tray	Labeled	1	10
20509	2"-4" Solvent-Resistant Roller Tray	Labeled	3	10
20510	2"-6" Solvent-Resistant Roller Tray	Labeled	4	10
20530	SideKick Paint Tote™ and Grid	Labeled	5	5
20531	SideKick Paint Tote™ Replacement Liners, 3 Pk	Labeled	2	5

PAINT CAN ACCESSORIES



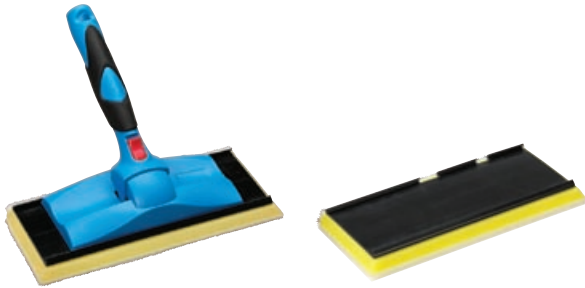
Item No.	Description	Type of Packaging	Pack Weight	Pack Qty.
20157	One-Gallon Paint Can Grid	Labeled	2	20
20159	One-Gallon Paint Pourer	Labeled	2	10

Fabric	2"	4"	6"	Kits
Smoothfoam™	20203 20204	20201	20202	20518 20511 20512
		20205	20206	
		20207	20208	
		20209	20210	
		20230	20231	
		20230	20231	
Veri-Smooth™		20451	20452	
		20454	20455 20453	
Profab™		20301	20302	20513
		20303	20305	
		20304	20306	
		20308	20310	
		20309	20311	
		20312	20313	
		20330	20314	
		20330	20331 20307	
Ultra-Sorb™		20351	20352	
		20354	20355	
		20356	20357	
		20356	20353	
EZ-Roll™		20401	20402	
		20403	20412	
		20404	20405	
		20417	20406	
		20407	20413	
		20408	20418	
		20430	20409	
			20414	
			20410	
			20411	
			20415	
	20431 20416			

Paint Pads

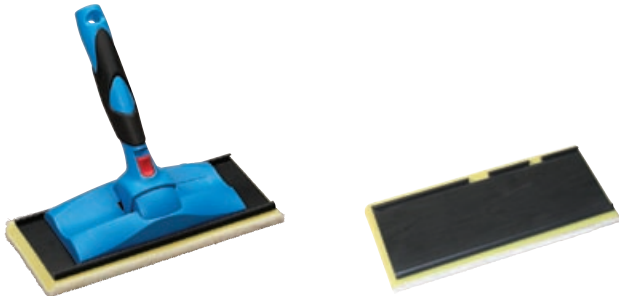
Warner Paint Pads are available for all your painting needs, including painting corners, stain application, rough surface application and edging. Warner's flocked foam pads deliver superior smoothness on many different surfaces while eliminating virtually all lines, drips and runs.

PAD PAINTERS



Item No.	Description	Type of Packaging	Pack Weight	Pack Qty.
20150	7" Pad Painter	Carded	3	6
20151	9" Pad Painter	Carded	3	6
20152	7" Pad Painter Refill	Carded	2	10
20153	9" Pad Painter Refill	Carded	3	10

DECK AND STAIN PAD PAINTERS



Item No.	Description	Type of Packaging	Pack Weight	Pack Qty.
20164	7" Deck, Fence and Siding Pad Painter	Carded	3	6
20165	9" Deck, Fence and Siding Pad Painter	Carded	3	6
20162	7" Deck, Fence and Siding Pad Painter Refill	Carded	2	10
20163	9" Deck, Fence and Siding Pad Painter Refill	Carded	3	10

EDGE AND TRIM PAINTERS



Item No.	Description	Type of Packaging	Pack Weight	Pack Qty.
20155	2-Wheel Edge Painter	Carded	3	10
20154	2-Wheel Edge Painter with Extension Pole Adapter	Carded	3	10
20156	2-Wheel Edge Painter Replacement Pads, 2 Pk.	Carded	1	10



Item No.	Description	Type of Packaging	Pack Weight	Pack Qty.
20141	Trim Painter w/2 Pads	Carded	1	10
20139	Touch-Up Painter's Kit, 2 Pk.	Carded	1	10
20140	Corner Painter	Carded	1	10



Item No.	Description	Type of Packaging	Pack Weight	Pack Qty.
20168	Multi-Painter	Carded	1	20
20501	EZ-Corner™ 4" Foam Corner Roller	Carded	1	10

ROLLERS



Item No.	Description	Type of Packaging	Pack Weight	Pack Qty.
20142	9" Roller Guard	Carded	4	6
20145	9" Roller Guard Replacement Caps, 2 Pk.	Bagged	1	10
20143	3" Trim Roller and Tray	Carded	2	12
20144	3" Trim Roller Refills, 2 Pk.	Bagged	1	12
20183	3" Trim Roller and Tray	Carded	2	12
20184	3" Refill Trim Roller, 2 Pk.	Bagged	1	12

Glass Cutter

Proper tools make prepping windows for painting practically trouble-free. The glass cutter has a super-hard cutting wheel and breaking ball.

GLASS CUTTER



Item No.	Description	Type of Packaging	Pack Weight	Pack Qty.
138	Glass Cutter	Carded	1	10

Window Tools

The window opener helps to break windows free after they have been painted shut. The double-ended window tool helps remove old, hardened putty and apply new putty for a neat, clean seal. The 1-5/8" sharp chisel edge is the largest window blade on the market, making compound removal faster and easier. The glazing blade is angled to give you a perfect bead every time.

WINDOW TOOLS



Item No.	Description	Type of Packaging	Pack Weight	Pack Qty.
142	Glazier Push Points	Carded	1	10
268	Window Opener	Carded	3	10
395	Double-Ended Window Tool	Carded	2	5

Utility Knives

Utility knives feature heavy-duty, die-cast zinc or aluminum housings with ground and honed high-carbon steel blades. Three styles are available. Side or top trigger release designs allow blade to be retracted for safety. The fixed-blade version securely clamps the blade in a cutting position. #350 side trigger knife has four locking blade adjustments and accepts all Warner utility blades.

Unique to the line is the ProCut® Rasp N' Knife®, which features a zinc body die cast to double as a drywall rasp. A special safety feature of the #566 safety utility knife is a spring-loaded, self-retracting blade. Pressing the trigger exposes the blade and the blade retracts when trigger is released.

UTILITY KNIVES

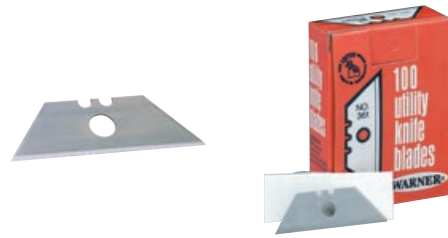


Item No.	Description	Type of Packaging	Pack Weight	Pack Qty.
350	Side Trigger Utility Knife with 1 Blade	Carded	4	10
351	Side Trigger Utility Knife with 5 Blades (#350 Knife)	Carded	4	10
366	Top Trigger Utility Knife with 3 Blades	Carded	4	10
364	Fixed-Blade Utility Knife with 3 Blades	Carded	4	10



Item No.	Description	Type of Packaging	Pack Weight	Pack Qty.
10316	Soft-Grip Top Trigger Utility Knife	Carded	2	10
10317	Soft-Grip Fixed Blade Utility Knife	Carded	2	10
352	ProCut® Rasp N' Knife®, Fixed-Blade with 1 Blade	Carded	4	10
566	Safety 1st™ Utility Knife, Self-Retracting Blade with 1 Blade	Carded	4	10
1052	ProCut® Rasp N' Knife®, 10/Bucket, #352	Bucket	4	1
1044	Quick Change Utility Knife, 24/Counter Display	Boxed	8	1

UTILITY BLADES



Item No.	Description	Type of Packaging	Pack Weight	Pack Qty.
360	Utility Blades, 5/Card	Carded	1	10
361	Utility Blades, 100 Single-Wrapped	Boxed	1	1

Hopper Gun

Ideal for spraying walls and ceilings, the hopper gun includes three nozzles, air shutoff valve, and 1/4" quick disconnect. Made of lightweight aluminum with 1-3/4 gallon capacity, internal brass components, and comfortable, full-length grip trigger. Angled boot for ceiling spraying.

HOPPER GUN



Item No.	Description	Type of Packaging	Pack Weight	Pack Qty.
10041	Hopper Gun	Boxed	5.5	1
10091	Angled Boot/Adapter	Bagged	0.5	1
10077	O-Ring Replacement Kit Kit Contains: 4 ea. O-Ring 10.82mm x 1.78mm 1 ea. O-Ring 9.25mm x 1.78mm 1 ea. O-Ring 11.5mm x 1.5mm 1 ea. O-Ring 35mm x 3mm	Bagged	0.2	1
10079	Adj. Knob Assembly	Bagged	0.5	1
10080	Nickel Gun Replacement Needle	Bagged	0.5	1
10202	3 Nozzles with Retaining Ring Kit Contains: 1 ea. 1/4" (6.0mm) Nozzle 1 ea. 3/16" (4.0mm) Nozzle 1 ea. 5/16" (8.0mm) Nozzle 1 ea. Retaining Ring	Bagged	0.5	1

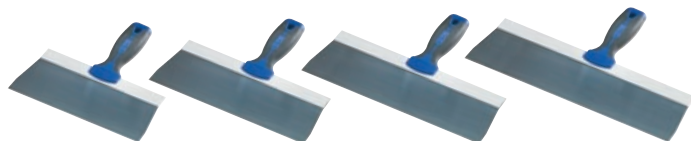
Taping Knives

Warner offers a wide range of taping knives. Typically 6" and 8" knives are used for setting tape and 10" to 12" blades are used for applying finish coats. Blades are supported with aluminum or steel backings.

ProGrip² ProGrip² Stainless Steel

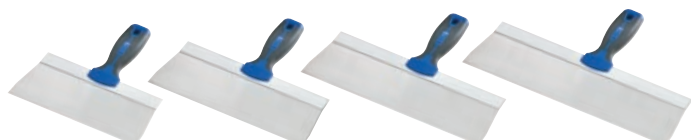
The ProGrip²™ line of taping knives feature soft grip, ergonomic handles and stainless steel blades. These top-of-the-line taping knives are hot sellers.

PROGRIP²™ - BLUE STEEL



Item No.	Description	Type of Packaging	Pack Weight	Pack Qty.
90748	8" Taping Knife, XL, Blue Steel, Flex	Labeled	4	5
90750	10" Taping Knife, XL, Blue Steel, Flex	Labeled	4	5
90752	12" Taping Knife, XL, Blue Steel, Flex	Labeled	4	5
90754	14" Taping Knife, XL, Blue Steel, Flex	Labeled	4	5

PROGRIP²™ - STAINLESS STEEL

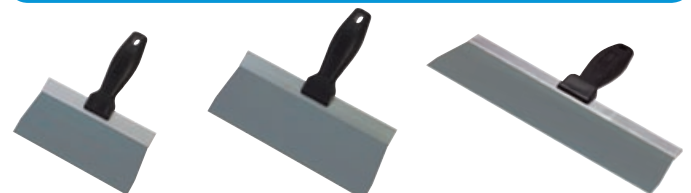


Item No.	Description	Type of Packaging	Pack Weight	Pack Qty.
90758	8" Taping Knife, XL, Stainless Steel, Flex	Labeled	3	5
90760	10" Taping Knife, XL, Stainless Steel, Flex	Labeled	3	5
90762	12" Taping Knife, XL, Stainless Steel, Flex	Labeled	4	5
90764	14" Taping Knife, XL, Stainless Steel, Flex	Labeled	4	5

Professional Aluminum Backing Plate

Aluminum backing plates provide blade rigidity while making these knives up to 40% lighter than standard taping knives. Hollow poly handle is molded to the extruded aluminum backing plate so it can't come loose. Blade flares out at edges to reach into corners. Blue steel or stainless steel blades.

ALUMINUM BACKING PLATE - POLY HANDLE



Item No.	Description	Type of Packaging	Pack Weight	Pack Qty.
748	8" Taping Knife, Blue Steel	Labeled	2	5
750	10" Taping Knife, Blue Steel	Labeled	2.5	5
752	12" Taping Knife, Blue Steel	Labeled	3	5



Item No.	Description	Type of Packaging	Pack Weight	Pack Qty.
758	8" Taping Knife, Stainless Steel	Labeled	2	5
760	10" Taping Knife, Stainless Steel	Labeled	2	5
762	12" Taping Knife, Stainless Steel	Labeled	2.5	5

ALUMINUM BACKING PLATE - WOOD HANDLE



Item No.	Description	Type of Packaging	Pack Weight	Pack Qty.
233	8" Taping Knife, Aluminum Back, Blue Steel	Labeled	3	5
234	10" Taping Knife, Aluminum Back, Blue Steel	Labeled	4	5
235	12" Taping Knife, Aluminum Back, Blue Steel	Labeled	4	5



Item No.	Description	Type of Packaging	Pack Weight	Pack Qty.
263	8" Taping Knife, Aluminum Back, Stainless Steel	Labeled	3	5
264	10" Taping Knife, Aluminum Back, Stainless Steel	Labeled	4	5
265	12" Taping Knife, Aluminum Back, Stainless Steel	Labeled	4	5

Molded Backing Plates

High-impact handle of molded plastic makes these knives an excellent value. They are 40% lighter than ordinary knives and are available with stainless or blue steel blades.

MOLDED BACKING PLATE - PLASTIC HANDLE



Item No.	Description	Type of Packaging	Pack Weight	Pack Qty.
191	6" Taping Knife, Blue Steel	Labeled	3	10
192	8" Taping Knife, Blue Steel	Labeled	4	10
193	10" Taping Knife, Blue Steel	Labeled	5	10
194	12" Taping Knife, Blue Steel	Labeled	5	10

CURVED BLADE KNOCK DOWN KNIVES



Item No.	Description	Type of Packaging	Pack Weight	Pack Qty.
10354	18" Curved Blade Knife	Labeled	5	4
10355	24" Curved Blade Knife	Labeled	7	4

KNOCK DOWN KNIVES – LONG-HANDLE



Item No.	Description	Type of Packaging	Pack Weight	Pack Qty.
10305	12" Knock Down Knife, 18" Wood Handle	Labeled	5	5
10306	14" Knock Down Knife, 18" Wood Handle	Labeled	6	5
10302	18" Knock Down Knife, 18" Wood Handle	Labeled	7	5

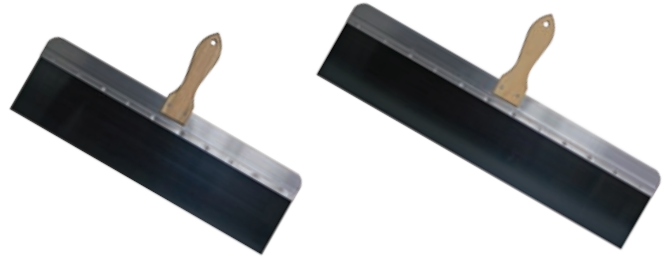


Item No.	Description	Type of Packaging	Pack Weight	Pack Qty.
10303	20" Knock Down Knife, 18" Wood Handle	Labeled	7	5
10304	24" Knock Down Knife, 18" Wood Handle	Labeled	8	5

KNOCK DOWN KNIVES – SHORT-HANDLE



Item No.	Description	Type of Packaging	Pack Weight	Pack Qty.
10406	14" Knock Down Knife, 7" Wood Handle	Labeled	5	5
10402	18" Knock Down Knife, 7" Wood Handle	Labeled	5	5



Item No.	Description	Type of Packaging	Pack Weight	Pack Qty.
10403	20" Knock Down Knife, 7" Wood Handle	Labeled	6	5
10404	24" Knock Down Knife, 7" Wood Handle	Labeled	7	5

MISCELLANEOUS TAPING KNIVES



Item No.	Description	Type of Packaging	Pack Weight	Pack Qty.
300	12-7/8" Offset Taping Knife, Stainless Steel	Labeled	5	5
272	7" Taping Knife, Long Handle	Labeled	3	5



Item No.	Description	Type of Packaging	Pack Weight	Pack Qty.
10070	8" Taping Knife, Blue Steel, "Pro Choice"	Labeled	2	5
10071	10" Taping Knife, Blue Steel, "Pro Choice"	Labeled	2.5	5
10072	12" Taping Knife, Blue Steel, "Pro Choice"	Labeled	3	5

Corner and Curved Trowels

Stainless steel blades are corrosion-proof and long-lasting. Adjustable trowel can handle a variety of wall-ceiling applications. Reversible handle on the adjustable trowels give you two tip angles.

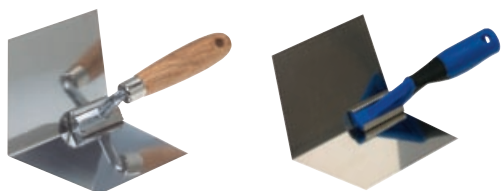
The curved blade on a drywall trowel puts a perfect crown on finish joints.

Bull nose trowels (#148 and #149) are used to quickly knock down mud on outside bull nose corners.

TROWELS



Item No.	Description	Type of Packaging	Pack Weight	Pack Qty.
131	88°–155° Bull Nose Inside Corner Trowel, Adjustable	Labeled	3	4
190	90° Inside Corner Taping Knife, Steel Blade, Plastic Handle	Labeled	2	5
214	89°–150° Inside Corner Trowel, Adjustable	Carded	3	4



Item No.	Description	Type of Packaging	Pack Weight	Pack Qty.
217	90° Inside Corner Trowel	Labeled	3	5
10128	98° Inside Corner Trowel, Plastic Threaded Handle	Labeled	2	5



Item No.	Description	Type of Packaging	Pack Weight	Pack Qty.
921	4" x 14" Curved Blade Trowel	Labeled	5	5
922	4-1/2" x 11" Curved Blade Trowel	Labeled	5	5
973	5-1/2" x 11" EIFS Plastic Trowel	Labeled	5	5



Item No.	Description	Type of Packaging	Pack Weight	Pack Qty.
148	3/4" Outside Bull Nose Trowel, Plastic Handle, Flex	Labeled	1	10
149	1-1/2" Outside Bull Nose Trowel, Plastic Handle, Flex	Labeled	1	5

FLOATS

Floats are used for finishing or smoothing drywall compound, stucco, concrete or grout.



Item No.	Description	Type of Packaging	Pack Weight	Pack Qty.
976	4" x 9-1/8" Red Rubber Float	Labeled	5	10

APPLICATOR BRUSHES

Applicator brushes are used for applying masonry and stucco, adhesives and compounds.



Item No.	Description	Type of Packaging	Pack Weight	Pack Qty.
457	4-1/2" Beveled Textured Brush	Labeled	4	10
459	6-1/2" Cement Brush	Labeled	5	10

SMOOTHERS

Soft, flexible blades for smoothing sprayed surfaces. Smoothes rough and uneven surfaces, including paint, drywall joints and stucco. Comfortable foam handle has threaded end cap for extension pole. Blade cover included.

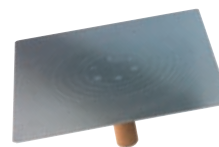


Item No.	Description	Type of Packaging	Pack Weight	Pack Qty.
303	18" Drywall Finishing Smoother with Blade Cover	Labeled	3	5
304	22" Drywall Finishing Smoother with Blade Cover	Labeled	4	5

Hawk

The 13" x 13" Hawk is made of aluminum and features concentric circles engraved in the top surface to prevent mud slides. Has screw-on, removable handle for easy cleanup.

HAWK



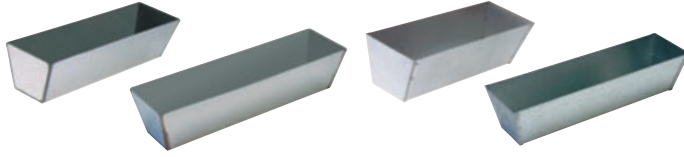
Item No.	Description	Type of Packaging	Pack Weight	Pack Qty.
216	13" x 13" Drywall Hawk, Aluminum	Labeled	8	4

Mud Pans

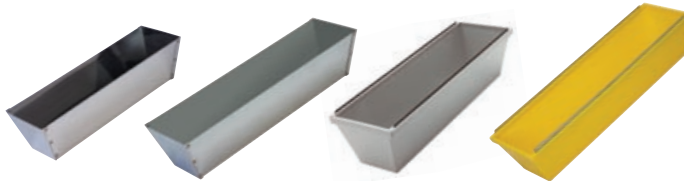
Mud pans for drywall compound are available in stainless steel, plastic and galvanized steel in 12" and 14" sizes. Mud pans #196 and #197 have heli-arc welded seams and are leakproof. The other metal mud pans listed are spot-welded construction.

The #221 mud pan features removable steel blades along each side for knife scraping and easy cleaning.

MUD PANS



Item No.	Description	Type of Packaging	Pack Weight	Pack Qty.
197	12" Mud Pan, Heli-Arc Welded, Stainless Steel	Labeled	14	10
196	14" Mud Pan, Heli-Arc Welded, Stainless Steel	Labeled	15	10
206	12" Mud Pan, Spot-Welded, Galvanized	Labeled	14	10
267	14" Mud Pan, Spot-Welded, Galvanized	Labeled	16	10



Item No.	Description	Type of Packaging	Pack Weight	Pack Qty.
207	12" Mud Pan, Spot-Welded, Stainless Steel	Labeled	13	10
266	14" Mud Pan, Spot-Welded, Stainless Steel	Labeled	15	10
221	12" Mud Pan, Removable Steel Blades, Plastic	Labeled	8	10
10340	14" Plastic Mud Pan	Labeled	5	5

Saws

The ProCut® drywall saw has Warner's sawtooth grind, resulting in needle-sharp, long-lasting teeth. The 6-1/2" inch blade is extremely stiff with a chisel point. Ergonomic grip for comfort.

SAWS



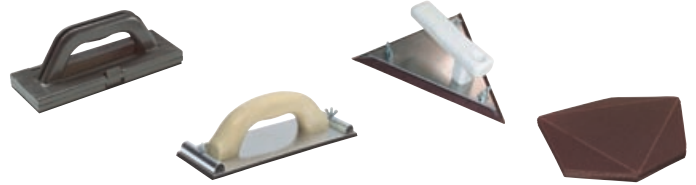
Item No.	Description	Type of Packaging	Pack Weight	Pack Qty.
625	ProCut® Drywall Saw, 6-1/2" Blade	Carded	1.5	6
10005	Drywall Saw, 15" Blade, Hardwood Handle	Labeled	6	5

Sanders

Warner professional sanding heads, pads, and blocks are among the most forgiving in the industry. Thick, soft, and flexible, they help create the perfect joint or seam.

HAND SANDERS

Hand sanders include the Tri-Pad® sander for finishing walls next to ceilings and corners. Has three usable sanding edges and makes perfect seams to minimize callbacks. Sanding blocks are spongy and affordable. Good for quick touch-ups.



Item No.	Description	Type of Packaging	Pack Weight	Pack Qty.
208	Hand Sander, Molded Plastic	Labeled	2	5
229	Pro Hand Sander, Metal Base with Plastic Handle	Labeled	6	5
373	Tri-Pad® Hand Sander	Labeled	3	5
392	Tri-Pad® Replacement Sandpaper, 120 Grit, 25 Sheets/Pack	Wrapped	1	1

POLE SANDERS

Professional pole sanders increase productivity thanks to a swivel head that assures flat surface contact without tipping or rocking. All sanding heads accept standard die-cut sandpaper and 3/4" standard threaded extension poles.



Item No.	Description	Type of Packaging	Pack Weight	Pack Qty.
337	Tri-Pad® Pole Sander, Head Only, Female Threaded	Labeled	4	5
209	Pole Sander, Head Only, Female Threaded, Plastic	Labeled	2	5
256	Pole Sander, Head Only, Female Threaded	Labeled	6	5
10310	2-in-1 Hand/Pole Sander	Carded	2	4

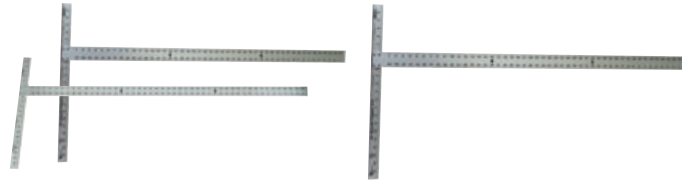


Item No.	Description	Type of Packaging	Pack Weight	Pack Qty.
218	Pole Sander with 48" Pole, 1/ Carton	Labeled	3	1
254	Replacement Head for #218, Head Only	Labeled	4	5
255	Replacement Pole for #218, Pole Only	Labeled	4	5
147	Female Pole Adapter	Bagged	1	10

T-Squares and Tapes

Heavy-duty T-Squares are 3/16" thick aluminum with easy-to-read 1/8" graduations silk-screened on the surface. The #223 T-Square is a value version for light-duty use.

T-SQUARES AND TAPES



Item No.	Description	Type of Packaging	Pack Weight	Pack Qty.
223	48" T-Square, 1/8" Thick	Labeled	5	1
282	48" Heavy-Duty T-Square, 3/16" Thick	Labeled	6.5	2
165	54" Heavy-Duty T-Square, 3/16" Thick	Labeled	6	2



Item No.	Description	Type of Packaging	Pack Weight	Pack Qty.
287	12' Retractable Tape Measure, Aluminum Case	Carded	4	12
296	25' Neon Tape Measure, Plastic Case	Carded	6	6

Mixers

Heavy-duty 5-gallon mixers for drywall compound. Mixer heads don't stop short, they reach all the way to the bottom of the bucket. Hexagonal steel shafts fit 1/2" drills.

MIXERS



Item No.	Description	Type of Packaging	Pack Weight	Pack Qty.
204	5-Gallon Inverted Blade Mixer	Labeled	3	1
342	Mud Masher, Hand Mixer, 28" Handle	Labeled	10	5
344	5-Gallon Mixer, Dual Propeller Blade, 30" Hex Shaft, Fits 1/2" Drill	Labeled	11	5
345	Mixer, Twin Propeller Blades, 25" Hex Shaft, Fits 1/2" Drill	Labeled	9	5
347	5-Gallon Mixer, Dual Propeller Blade, 36" Hex Shaft, Fits 1/2" Drill	Labeled	12	5

MISCELLANEOUS



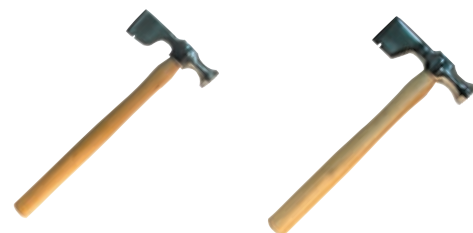
Item No.	Description	Type of Packaging	Pack Weight	Pack Qty.
95	Tin Snips	Carded	4	3
96	No Pock Pro	Bottle	29	4
438	Drywall Rasp	Labeled	1	5



Item No.	Description	Type of Packaging	Pack Weight	Pack Qty.
157	Drywall Boot Lifter	Labeled	4	2
174	Drywall Edge Cutter	Labeled	5	3
227	Drywall Toe Roll Lifter	Labeled	7	2



Item No.	Description	Type of Packaging	Pack Weight	Pack Qty.
175	Drywall Tape Applicator	Boxed	3.5	1
10109	Replacement Cutting Blade for #175	Bagged	1.5	1
338	1-1/4" Corner Bead Crimper with Rubber Mallet	Boxed	1	1
10265	Replacement Teeth Kit for #338	Bagged	1	1
339	Circle Cutter, Adjustable	Labeled	2.3	6



Item No.	Description	Type of Packaging	Pack Weight	Pack Qty.
10101	Drywall Hammer, 12 oz.	Labeled	4.5	3
10102	Drywall Hammer, 16 oz.	Labeled	4	3

EZ-Stride® Step-Up Benches

EZ-Stride® Step-Up Benches are made of lightweight, extruded, high-strength aluminum. They set up quickly and easily and are available in four sizes, 24", 29", 35" and 46". They fit in small, tight areas and are easy to transport. They hold up to 300 lbs with tools.

EZ-STRIDE® STEP-UP BENCHES



Item No.	Description	Type of Packaging	Pack Weight	Pack Qty.
10225*	EZ-Stride® 24" Step-Up Bench	Boxed	27	2
10226*	EZ-Stride® 29" Step-Up Bench	Boxed	30	2
10227*	EZ-Stride® 35" Step-Up Bench	Boxed	40	2
10228*	EZ-Stride® 46" Step-Up Bench	Boxed	57	2



Item No.	Description	Type of Packaging	Pack Weight	Pack Qty.
10296	Foot Pad Kit for #10225, #10226, #10227 & #10228	Bagged	1	1
10297	24" x 29" Spreader Bar Kit for #10225 & #10226	Bagged	1	1
10298	35" x 46" Spreader Bar Kit for #10227 & #10228	Bagged	1	1
10314	Hinge Kit for #10225, #10226, #10227 & #10228	Boxed	1	1

EZ-Stride® Drywall Bench

The EZ-Stride® Folding Drywall Bench is made of lightweight, extruded aircraft aluminum with heavy-duty welds, and it holds up to 450 lbs with tools. Bench top measures 9-1/2" wide and 48" long, providing ample room for working. Bench folds to 6-1/2" x 16" x 48" and weighs just 36 lbs.

Double-action, spring-loaded pin locks make leg height adjustment quick and easy. Available leg extension kit increases bench top height to 47". Extension legs are flared to increase stability and minimize tipping.

EZ-STRIDE® BENCH



Item No.	Description	Type of Packaging	Pack Weight	Pack Qty.
10329*	EZ-Stride® Drywall Bench	Boxed	36	1



Item No.	Description	Type of Packaging	Pack Weight	Pack Qty.
10040	Extension Legs for #10329	Boxed	21	1
10127	Replacement Rubber Foot Pads for #10329	Bagged	1	1
10090	Replacement Leg with Pad for #10329	Bagged	2	1



Item No.	Description	Type of Packaging	Pack Weight	Pack Qty.
10345	Replacement Step for #10329	Boxed	3	1
10160	Extension Leg Brace/Step for #10329	Boxed	3	1

*90-Day Limited Warranty. See www.warnertool.com or call 800-444-0606 for details.

EZ-Stride® Stilts

Lightweight stilts are perfect for handling walls and overheads where scaffolding and ladders are inconvenient. EZ-Stride® Adjustable Stilts adjust quickly and easily without tools, featuring dual-spring action to make walking more natural. Stilts have cotton straps with heavy-duty spring clips permanently installed at the factory to prevent accidental loss. Other features include adjustable sole and heel plates with rubber sole bottoms. Instruction manual included. Weight limit of 225 lbs with tools.

EZ-STRIDE® ALUMINUM STILTS



Item No.	Description	Type of Packaging	Pack Weight	Pack Qty.
10231*	EZ-Stride® Aluminum 15"-23" Stilts	Boxed	16	1
10230*	EZ-Stride® Aluminum 18"-30" Stilts	Boxed	18	1
10229*	EZ-Stride® Aluminum 24"-40" Stilts	Boxed	19	1
10235	Strut Tube Kit, 15"-23" for #10231	Bagged	2	1
10233	Strut Tube Kit, 18"-30" for #10230	Bagged	2	1
10232	Strut Tube Kit, 24"-40" for #10229	Bagged	2	1
10236	Replacement Strap Kit	Bagged	1	1
10237	Replacement Sole w/Screws Kit	Bagged	2	1
10238	Leg Band Kit	Bagged	1	1
10239	Leg Tube Clamping Kit	Bagged	1	1
10240	Adjustable Heel Bracket Kit	Bagged	0.25	1
10245	Forward 15" Leg Extrusion	Bagged	2	1
10241	Forward 24" Leg Extrusion	Boxed	2	1
10242	Forward 18" Leg Extrusion	Boxed	2	1
10246	Outward 15" Leg Extrusion, Left	Bagged	2	1
10243	Outward 18" Leg Extrusion, Left	Boxed	2	1
10244	Outward 24" Leg Extrusion, Left	Boxed	2	1
10249	Outward 15" Leg Extrusion, Right	Bagged	2	1
10248	Outward 18" Leg Extrusion, Right	Boxed	2	1
10247	Outward 24" Leg Extrusion, Right	Boxed	2	1
6473	Spring Kit	Bagged	1	1
7090	Nylon Bushing Kit	Bagged	0.25	1
10036	Foot/Floor Plate Kit	Bagged	1.3	1
6476	Wing Bolt Kit	Bagged	0.25	1
7089	Bolt/Bearing Overhaul Kit	Bagged	1	1

*90-Day Limited/1-Year Structural Warranty. See www.warnertool.com or call 800-444-0606 for details.

Each pair of Magnesium EZ-Stride® Stilts is two pounds lighter than our industry standard Aluminum EZ-Stride® Stilts. Magnesium components create a lighter product, which means less fatigue and a more productive workday. In addition, Magnesium EZ-Stride® Stilts include all the great features of our extremely popular aluminum stilts. Weight limit of 225 lbs with tools.

EZ-STRIDE® MAGNESIUM STILTS



Item No.	Description	Type of Packaging	Pack Weight	Pack Qty.
10392*	EZ-Stride® Magnesium 18"-30" Stilts	Boxed	14.25	1
10393*	EZ-Stride® Magnesium 24"-40" Stilts	Boxed	15.5	1
10411	Strut Tube Kit, 18"-30" for #10392	Bagged	2	1
10412	Strut Tube Kit, 24"-40" for #10393	Bagged	2	1
10236	Replacement Strap Kit	Bagged	1	1
10237	Replacement Sole Kit	Bagged	2	1
10238	Leg Band Kit	Bagged	1	1
10239	Leg Tube Clamping Kit	Bagged	1	1
10240	Adjustable Heel Bracket Kit	Bagged	0.25	1
10413	Forward 18" Leg Extrusion	Boxed	2	1
10414	Forward 24" Leg Extrusion	Boxed	2	1
10415	Outward 18" Leg Extrusion, Left	Boxed	2	1
10416	Outward 24" Leg Extrusion, Left	Boxed	2	1
10417	Outward 18" Leg Extrusion, Right	Boxed	2	1
10418	Outward 24" Leg Extrusion, Right	Boxed	2	1
6473	Spring Kit	Bagged	1	1
7090	Nylon Bushing Kit	Bagged	0.25	1
10036	Foot/Floor Plate Kit	Bagged	1.3	1
6476	Wing Bolt Kit	Bagged	0.25	1
7089	Bolt/Bearing Overhaul Kit	Bagged	1	1

Adhesive Spreaders

These handy spreaders are just the right size for smaller jobs and reaching into crowded areas.

Inexpensive plastic tools are perfect for projects involving hard-to-clean adhesives. Save time and energy by using them one time.

SPREADERS



Item No.	Description	Type of Packaging	Pack Weight	Pack Qty.
908	3" Spreader, V-Notch, Plastic	Labeled	2	20
909	3" Spreader, Square-Notch, Plastic	Labeled	2	20

MISCELLANEOUS



Item No.	Description	Type of Packaging	Pack Weight	Pack Qty.
994	3/16" Tile Spacers, 100/Box	Boxed	3	50
999	1/4" Tile Spacers, 100/Box	Boxed	3	50
995	6-1/2" x 4-1/2" x 2-1/2" Tile Grout Sponge	Film	5	48
996	Tile Grout Spreader, Flexible 6" Blade, Wood Handle	Labeled	3	10

Finishing Trowels

Full line of trowels for every need, including masonry, cement, drywall, plaster, and brick work. Carbon steel blades with sturdy hardwood or molded plastic handles.

TROWELS



Item No.	Description	Type of Packaging	Pack Weight	Pack Qty.
916	16" x 4" Flat Blade Trowel	Labeled	6	5
921	4" x 14" Curved Blade Trowel	Labeled	5	5
922	4-1/2" x 11" Curved Blade Trowel	Labeled	5	5
923	4" x 14" Flat Blade Trowel	Labeled	6	5



Item No.	Description	Type of Packaging	Pack Weight	Pack Qty.
924	4-1/2" x 11" Flat Blade Trowel	Labeled	4	5
440	4-1/2" x 10" Finishing Trowel	Labeled	8	10
973	5-1/2" x 11" EIFS Plastic Trowel	Labeled	5	10

Pointing Trowels

Used for bricklaying and making cement joints. Hardened, tempered steel blade with hardwood and plastic handles.

POINTING TROWELS



Item No.	Description	Type of Packaging	Pack Weight	Pack Qty.
441	5-1/2" Pointing Trowel	Labeled	8	10
920	2" x 5-1/8" Margin Trowel	Labeled	2	5



Item No.	Description	Type of Packaging	Pack Weight	Pack Qty.
926	10" Philadelphia Brick Pointing Trowel	Labeled	3	5
927	5-1/2" Brick Pointing Trowel	Labeled	2	5



Item No.	Description	Type of Packaging	Pack Weight	Pack Qty.
928	7" Brick Pointing Trowel	Labeled	3	5
929	10" London Brick Pattern Trowel	Labeled	4	5
971	7-1/2" Pointing Trowel	Labeled	4	10
972	10" Pointing Trowel	Labeled	5	10

Groover and Jointing Trowels

Cement groover trowels have curved edges to prevent gouging. Brick jointing trowels produce a smooth mortar joint between cement block or bricks. Steel blades with hardwood handles.

GROOVER AND JOINTING TROWELS



Item No.	Description	Type of Packaging	Pack Weight	Pack Qty.
442	Patcher, Stiff	Labeled	2	10
933	Cement Groover Trowel	Labeled	3	5
934	2-3/4" x 6" Cement Edger Trowel	Labeled	3	5

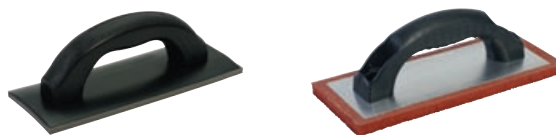


Item No.	Description	Type of Packaging	Pack Weight	Pack Qty.
935	Tuck Pointing Trowel, 3/8" x 6" Blade	Labeled	2	10
937	3/8" x 1/2" Brick Jointer	Labeled	4	10
938	5/8" x 1/2" Brick Jointer	Labeled	4	10

Floats

Floats are used for finishing or smoothing drywall compound, stucco, concrete, or grout. Blade choices include plastic or rubber.

FLOATS



Item No.	Description	Type of Packaging	Pack Weight	Pack Qty.
975	3-5/8" x 9" Professional Rubber Grout Float	Labeled	8	10
976	4" x 9-1/8" Red Rubber Float, Aluminum Backing Plate, Plastic Handle	Labeled	5	10

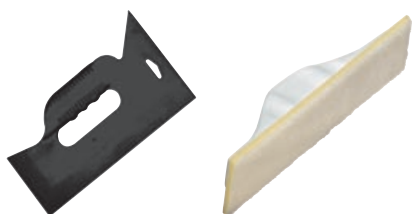
Smoothers

Warner offers a variety of smoothers for virtually every need. They're made of plastic or foam and come in flexible or stiff for specific uses.

SMOOTHERS



Item No.	Description	Type of Packaging	Pack Weight	Pack Qty.
497	9" Plastic Smoother, White, Stiff, Use on Vinyl Paper	Labeled	4	20
498	9" Plastic Smoother, Beige, Flexible, Use on Paper	Labeled	4	20



Item No.	Description	Type of Packaging	Pack Weight	Pack Qty.
431	11-1/2" Smoother/Trimmer Guide, Triple-Edge, Flex	Labeled	3	10
461	12" Foam Smoother, Flex	Labeled	2	12

Brushes

Wallcovering brushes with the proper stiffness produce a professional appearance.

BRUSHES



Item No.	Description	Type of Packaging	Pack Weight	Pack Qty.
456	6" Pasting Brush	Labeled	3	10
474	2-Way Smoother, 1-1/2" Bristles	Labeled	3	10
495	2-Way Vinyl Smoother, 3/4" Bristles	Labeled	3	10

Cutters and Snap-Off Blade Knives

Handy shears have long blades for faster, more accurate cutting. Double seam cutter cuts two overlapping layers of wallpaper so edges match perfectly. Features locking blade and industrial-ground cutting edges. Snap-off blade knife offers multiple cutting edges with a locking thumb advance mechanism so a fresh blade is instantly available. Just snap off the old blade to expose a fresh, sharp edge.

CUTTERS AND SNAP-OFF BLADE KNIVES



Item No.	Description	Type of Packaging	Pack Weight	Pack Qty.
90	11" Shears, Stainless Steel Blades	Carded	5	10
64	Double Seam Cutter with 1 Blade	Carded	1	5
65	Double Seam Cutter Replacement Blades, 20/Card	Carded	2	10
124	Hobby Knife, Snap-Off Blade with 1 Blade, 13-Points	Carded	2	10
116	Snap-Off Blades, 13-Point Blade, 5/Card for #117, #123 & #124, 13-Points	Carded	1	10
1034	Hobby Knife, Snap-Off Blade, 48/Counter Display, 13-Points	Boxed	1	1
125	Hobby Knife, Snap-Off Blade, 40/Bucket, #124, 13-Points	Bucket	2	1

Razor Knives

Razor knives have hardwood handles and steel housings to hold blades rigid. Warner's patented blade-locking system is an industry exclusive.

RAZOR KNIVES



Item No.	Description	Type of Packaging	Pack Weight	Pack Qty.
490	Razor Knife with 1 Blade	Carded	2	10
429	Razor Knife, Plain (Same as #490, UPC Sticker on Handle)	Labeled	2	10
10132	Razor Knife, Plastic Handle	Bagged	2	10

Heavy-Duty Professional Rollers

Double- or single-bracket construction with heavy-duty brass bearings. Choice of roller materials. Soft rollers are recommended for delicate mylar or natural fiber papers. Single-bracket rollers go into corners or along ceiling lines. All feature contoured wooden handles.

SEAM ROLLERS



Item No.	Description	Type of Packaging	Pack Weight	Pack Qty.
32	2" Hardwood Roller, Flat Surface, Double Bracket	Labeled	3	10
423	1" Wood Roller, Flat Surface, Double Bracket	Carded	2	10
426	1" Wood Roller, #423, Flat Surface, Double Bracket, UPC Labeled	Bulk	2	10



Item No.	Description	Type of Packaging	Pack Weight	Pack Qty.
222	1" Plastic Roller, Flat Surface, Double Bracket	Labeled	3	10
224	1" Plastic Roller, Oval Surface, Double Bracket	Labeled	3	10



Item No.	Description	Type of Packaging	Pack Weight	Pack Qty.
422	1" Plastic Roller, Flat Surface, Single Bracket	Labeled	2	10
232	2" Plastic Roller, Flat Surface, Double Bracket	Labeled	3	10
415	1" Plastic Roller and Handle, Flat Surface, Single Bracket, UPC Labeled	Bulk	1	10
416	1" Plastic Roller and Handle, Flat Surface, Single Bracket	Labeled	1	10

Wallcovering Kit

A handy kit for light home decorating projects. This kit provides all the necessary tools for wallcovering that is not prepacked.

WALLCOVERING KIT



Item No.	Description	Type of Packaging	Pack Weight	Pack Qty.
581	Vinyl Wallcovering Set Kit Contains: Instructions, Locking Snap Knife, 2-Way Smoothing Brush, Seam Roller, Tape Measure, 4" Foam Roller	Clam Shell	10	10

Rulers and Levels

Durable, high-quality measuring devices are a special Warner value. Essential for practically every project. They belong in every toolbox.

RULERS AND LEVELS

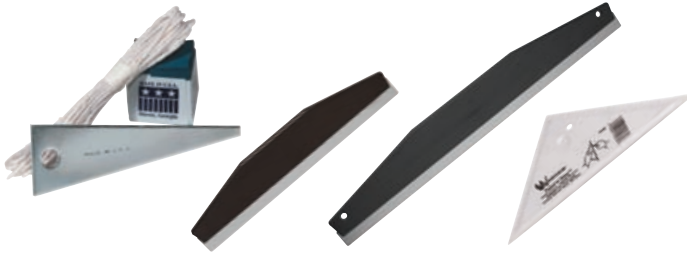


Item No.	Description	Type of Packaging	Pack Weight	Pack Qty.
290	3' Yardstick, Aluminum	Labeled	3	10
293	2' Bubble Stick, Plastic with Level and Plumb Vials	Labeled	3	5
292	4' Bubble Stick, Plastic with Level and Plumb Vials	Labeled	6	5

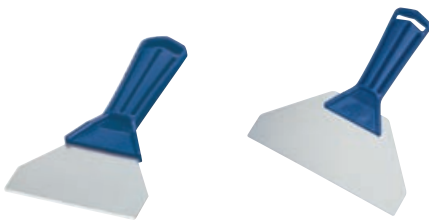
Accessory Tools

Specialized tools designed by wallcovering professionals to make projects go smoother, faster. They'll help you save time and minimize problems.

ACCESSORIES



Item No.	Description	Type of Packaging	Pack Weight	Pack Qty.
134	Lump Chalk, Line and Bob	Carded	3	20
428	12" Paint Guide and Wallcovering Tool	Labeled	3	10
433	23" Paint Guide and Wallcovering Tool	Labeled	6	10
435	7-3/4" x 6-1/4" x 9-7/8" Paint 'N' Trim™ Guide, Metal	Labeled	2	10



Item No.	Description	Type of Packaging	Pack Weight	Pack Qty.
195	4" Chisel Broad Knife, Stainless Steel	Labeled	2	10
187	6" Patch 'N' Trim™ Trim Guide and Patching Tool, Stainless Steel	Labeled	2	10



Item No.	Description	Type of Packaging	Pack Weight	Pack Qty.
250	Wallcovering Perforator Tool with Plastic Head Cover, 19" Handle	Labeled	1	1
449	7-3/4" x 3-3/8" x 2-1/2" Wallcovering Sponge	Film	2	12
548	30" Plastic Water Tray	Labeled	9	10

Assortments

The practical way to display and sell many of the most popular tools in the Warner line.

PROGRIP2™ ASSORTMENTS

All three assortments come with 24" full-color header and hooks.



Item No.	Description	Pack Qty.
91066	ProGrip2™ Standard Handle Assortment	
	1-1/2" Putty Knife, Stiff, #90109	5
	3" Scraper, Stiff, #90115	5
	5-in-1 Glazier Knife, Stiff, #90189	5
	6" Broad Knife, Hammer Cap™, Flex #90126	5
	1-1/2" Putty Knife, Flex, #90108	5
	3" Putty Knife, Flex, #90114	5
	4" Broad Knife, Hammer Cap™, Flex, #90124	5
91093	ProGrip2™ XL Handle Assortment	
	1-1/2" Putty Knife, Stiff, #90109	5
	3" Scraper, XL, Hammer Cap™, Stiff, #90175	5
	8-in-1 Scraper, Hammer Cap™, Stiff, #90173	5
	1-1/2" Putty Knife, Flex, #90108	5
	3" Putty Knife, XL, Hammer Cap™, Flex, #90174	5
	4" Broad Knife, XL, Hammer Cap™, Flex, #90176	5
	6" Broad Knife, XL, Hammer Cap™, Flex, #90178	5
91100	ProGrip2™ Tool Assortment	
	1-1/4" Chisel Putty Knife, Stiff, #90100	3
	1-1/2" Putty Knife, Flex, #90108	3
	1-1/2" Putty Knife, Stiff, #90109	3
	3" Putty Knife, Flex, #90114	3
	3" Scraper, Stiff, #90115	3
	4" Broad Knife, Hammer Cap™, Flex, #90124	3
	6" Broad Knife, Hammer Cap™, Flex, #90126	3
	6-in-1 Glazier Knife, Hammer Cap™, Stiff, #90199	3

DIY SERIES ASSORTMENT

Comes with 24" full-color header, hooks and backup tags. Includes 10 of each item for a total of 60 knives.



Item No.	Description	Pack Qty.
1081	DIY Series Assortment	
	1-1/4" Putty Knife, Stainless, Stiff, #180	10
	3" Scraper, Stainless, Stiff, #181	10
	1-1/4" Putty Knife, Stainless, Flex, #182	10
	3" Putty Knife, Stainless, Flex, #183	10
	4" Broad Knife, Stainless, Flex, #184	10
	6" Broad Knife, Stainless, Flex, #186	10

PLASTIC SERIES ASSORTMENT

Includes hooks and 20 of each item for a total of 120 knives.



Item No.	Description	Pack Qty.
1092	Plastic Series Assortment	
	1-1/2" Putty Knife, Plastic, Flex, #902	20
	3" Putty Knife, Plastic, Flex, #903	20
	2" Putty Knife, Plastic, Flex, #904	20
	3" Spreader, V-Notch, Plastic, #908	20
	3" Spreader, Square-Notch, Plastic, #909	20
	4" Broad Knife, Flex, #905	20

PAINTER'S SERIES DISPLAY

Includes rack, 16" full-color header, seven hooks and seven backup tags.



Item No.	Description	Pack Qty.
10337	Painter's Series Display	
	1-1/2" Flex Putty Knife, #10320	5
	1-1/2" Stiff Putty Knife, #10327	5
	3" Flex Putty Knife, #10322	5
	3" Stiff Scraper, #10323	5
	4" Broad Knife, Hammer Cap™, #10324	5
	6" Broad Knife, Hammer Cap™, #10326	5
	5-in-1 Glazier Knife, #10321	5

PAINT PAD ASSORTMENTS

All Paint Pad assortments contain a full-color header and hooks.



Item No.	Description	Pack Qty.
10192	2' Paint Pad Assortment	
	9" Pad Painter, #20151	6
	9" Pad Painter Refill, #20153	10
	7" Pad Painter, #20150	6
	7" Pad Painter Refill, #20152	10
	2 Wheel Edge Painter w/Pole Adapter, #20154	10
	2 Wheel Edge Painter, #20155	10
	2 Wheel Edge Painter Replacement Pad, 2/Card, #20156	10
	9" Roller Guard, #20142	6
	Replacement Caps for #20142, #20145	10
	Trim Painter w/2 Pads, #20141	10
	Touch Up Painters Kit, 2 Pads, #20139	10
	Corner Painter, #20140	10
	Multi-Painter, #20168	20
	Trim Roller and Tray, #20143	12
	Trim Roller Refills, 2/Bag, #20144	12
	Paint Can Grid, #20157	20
	Paint Pourer, #20159	10



Item No.	Description	Pack Qty.
10193	4' Paint Pad Assortment	
	9" Pad Painter, #20151	12
	9" Pad Painter Refill, #20153	20
	7" Pad Painter, #20150	12
	7" Pad Painter Refill, #20152	20
	2 Wheel Edge Painter w/Pole Adapter, #20154	10
	2 Wheel Edge Painter, #20155	20
	2 Wheel Edge Painter Replacement Pad, 2/Card, #20156	20
	9" Roller Guard, #20142	12
	Replacement Caps for #20142, #20145	10
	Trim Painter w/2 Pads, #20141	20
	Touch Up Painters Kit, 2 Pads, #20139	20
	Corner Painter, #20140	20
	Multi-Painter, #20168	20
	Trim Roller and Tray, #20143	24
	Trim Roller Refills, 2/Bag, #20144	24
	Paint Can Grid, #20157	20
	Paint Pourer, #20159	10

PAINT APPLICATOR ASSORTMENTS

2', 4' and 6' Paint Applicator assortments contain a full-color header and hooks.



Item No.	Description	Pack Qty.
20551	2' Paint Applicator Assortment	
	4" Smoothfoam™ Roller, 12" Frame, #20201	6
	4" Smoothfoam™ Roller, 2 Pk., #20205	8
	4" Profab™ Roller, 12" Frame, 1/2" Nap, #20301	6
	4" Profab™ Roller, 2 Pk., 1/2" Nap, #20303	8
	3 Piece 2" Smoothfoam™ Roller Kit, #20518	8
	2-Wheel Edge Painter, #20155	10
	Touch Up Painter's Kit, 2 Pads, #20139	10
	Corner Painter, #20140	10
	Trim Painter, 2 Pads, #20141	10
	Trim Roller and Tray, #20143	12
	Trim Roller Refills, 2 Pk., #20144	12
	7" Pad Painter, #20150	6
	9" Pad Painter, #20151	6
	7" Pad Painter Refill, #20152	10
	9" Pad Painter Refill, #20153	10
	2-Wheel Edge Painter w/Pole Adapter, #20154	10
	2-Wheel Edge Painter Replacement Pad, 2 Pk., #20156	10
	Sidekick Paint Tote™, #20530	5
	Sidekick Paint Tote™ Replacement Liners, #20531	5



Item No.	Description	Pack Qty.
20552	4' Paint Applicator Assortment	
	4" Smoothfoam™ Roller, 12" Frame, #20201	6
	6" Smoothfoam™ Roller, 12" Frame, #20202	6
	4" Smoothfoam™ Roller, 2 Pk., #20205	8
	6" Smoothfoam™ Roller, 2 Pk., #20206	8
	4" Profab™ Roller, 12" Frame, 1/2" Nap, #20301	6
	6" Profab™ Roller, 12" Frame, 1/2" Nap, #20302	6
	4" Profab™ Roller, 2 Pk., 1/2" Nap, #20303	8
	Continued...	

PAINT APPLICATOR ASSORTMENTS

20552 Continued

6" Profab™ Roller, 2 Pk., 1/2" Nap, #20305	8
EZ-Corner™ 4" Foam Corner Roller, #20501	10
2"-6" Solvent-Resistant Roller Tray, #20510	10
Profab™ 3-Piece Roller Kit, 6" Cover, 1/2" Nap, #20514	5
Sidekick Paint Tote™, #20530	5
Sidekick Paint Tote™ Replacement Liners, #20531	5
Touch Up Painter's Kit, 2 Pads, #20139	10
Corner Painter, #20140	10
Trim Painter, 2 Pads, #20141	10
9" Roller Guard, #20142	6
Trim Roller and Tray, #20143	12
Trim Roller Refills, 2 Pk., #20144	12
9" Roller Guard Replacement Caps, 2 Pk., #20145	10
7" Pad Painter, #20150	6
9" Pad Painter, #20151	6
7" Pad Painter Refill, #20152	10
9" Pad Painter Refill, #20153	10
2-Wheel Edge Painter w/Pole Adapter, #20154	10
2-Wheel Edge Painter, #20155	10
2-Wheel Edge Painter Replacement Pad, 2 Pk., #20156	10
One-Gallon Paint Can Grid, #20157	20
One-Gallon Paint Pourer, #20159	10
Multi-Painter, #20168	20

Sidekick Paint Tote™, #20530	5
Sidekick Paint Tote™ Replacement Liners, #20531	5
Touch Up Painter's Kit, 2 Pads, #20139	10
Corner Painter, #20140	10
Trim Painter, 2 Pads, #20141	10
9" Roller Guard, #20142	6
Trim Roller and Tray, #20143	12
Trim Roller Refills, 2 Pk., #20144	12
9" Roller Guard Replacement Caps, 2 Pk., #20145	10
7" Pad Painter, #20150	6
9" Pad Painter, #20151	6
7" Pad Painter Refill, #20152	10
9" Pad Painter Refill, #20153	10
2-Wheel Edge Painter w/Pole Adapter, #20154	10
2-Wheel Edge Painter, #20155	10
2-Wheel Edge Painter Replacement Pad, 2 Pk., #20156	10
One-Gallon Paint Can Grid, #20157	20
One-Gallon Paint Pourer, #20159	10
Multi-Painter, #20168	20



Item No.	Description	Pack Qty.
20553	6" Paint Applicator Assortment	
	4" Smoothfoam™ Roller, 12" Frame, #20201	6
	6" Smoothfoam™ Roller, 12" Frame, #20202	6
	4" Smoothfoam™ Roller, 2 Pk., #20205	8
	6" Smoothfoam™ Roller, 2 Pk., #20206	8
	4" Profab™ Roller, 12" Frame, 1/2" Nap, #20301	6
	6" Profab™ Roller, 12" Frame, 1/2" Nap, #20302	6
	4" Profab™ Roller, 2 Pk., 1/2" Nap, #20303	8
	4" Profab™ Roller, 2 Pk., 3/4" Nap, #20304	8
	6" Profab™ Roller, 2 Pk., 1/2" Nap, #20305	8
	6" Profab™ Roller, 2 Pk., 3/4" Nap, #20306	8
	4" Ultra-Sorb™ Roller, 2 Pk., #20354	8
	6" Ultra-Sorb™ Roller, 2 Pk., #20355	8
	4" EZ-Roller™ Roller, 2 Pk., 3/8" Nap, #20404	8
	6" EZ-Roller™ Roller, 2 Pk., 3/8" Nap, #20406	8
	6" EZ-Roller™ Roller, 2 Pk., 1/2" Nap, #20413	8
	4" Veri-Smooth™ Roller, 2 Pk., 1/4" Nap, #20454	8
	6" Veri-Smooth™ Roller, 2 Pk., 1/4" Nap, #20455	8
	EZ-Corner™ 4" Foam Corner Roller, #20501	10
	12" Soft-Grip Mini-Roller Frame, Fits 4" Cover, #20503	8
	12" Soft-Grip Mini-Roller Frame, Fits 6" Cover, #20504	8
	16" Soft-Grip Mini-Roller Frame, Fits 4" Cover, #20505	8
	16" Soft-Grip Mini-Roller Frame, Fits 6" Cover, #20506	8
	2"-4" Solvent-Resistant Roller Tray, #20509	10
	2"-6" Solvent-Resistant Roller Tray, #20510	10
	Smoothfoam™ 3-Piece Roller Kit, 6" Cover, #20512	5
	Profab™ 3-Piece Roller Kit, 6" Cover, 1/2" Nap, #20514	5

Item No.	Description	Pack Qty.
20580	Mini-Roller Wire Rack Display (Product, Wire Rack and Hooks)	
20581	Mini-Roller Wire Rack Assortment (Product Only)	
	4" Smoothfoam™ Roller, 12" Frame, #20201	6
	4" Smoothfoam™ Roller, 2 Pk., #20205	8
	4" Veri-Smooth™ Roller, 12" Frame, 1/4" Nap, #20451	6
	4" Veri-Smooth™ Roller, 2 Pk., 1/4" Nap, #20454	8
	4" Profab™ Roller, 12" Frame, 1/2" Nap, #20301	6
	4" Profab™ Roller, 2 Pk., 1/2" Nap, #20303	8
	4" Ultra-Sorb™ Roller, 12" Frame, #20351	6
	4" Ultra-Sorb™ Roller, 2 Pk., #20354	8
	One-Gallon Paint Can Grid, #20157	20
	EZ-Corner™ 4" Foam Corner Roller, #20501	10
	Trim Painter, 2 Pads, #20141	10
	Touch Up Painter's Kit, 2 Pads, #20139	10
	Corner Painter, #20140	10
	Multi-Painter, #20168	20
	2-Wheel Edge Painter w/Pole Adapter, #20154	10
	2-Wheel Edge Painter, #20155	10
	2-Wheel Edge Painter Replacement Pad, 2 Pk., #20156	10

CERTIFIED PARTS ASSORTMENTS

Assortment includes product and 24" header. Display includes product, 24" header, hooks and 2' floor display.



Item No.	Description	Pack Qty.
10201	Certified Parts Assortment	
10203	Certified Parts Display	
	Spring Kit for Hi-Stride™ Stilts, #6473	2
	Wing Bolt Kit for Hi-Stride™ Stilts, #6476	2
	Bolt/Bearing Overhaul Kit for Hi-Stride Stilts™, #7089	2
	Nylon Brushing Kit for Hi-Stride™ Stilts, #7090	2
	Foot Floor Plate Kit for Hi-Stride™ Stilts, #10036	2
	O Ring Replacement Kit for #10041 Hopper Gun, #10077	2
	Adj. Knob Assembly Kit for #10041 Hopper Gun, #10079	2
	Nickel Gun Replacement Needle for #10041 Hopper Gun, #10080	2
	Angled Boot/Adapter for #10041 Hopper Gun, #10091	2
	Nozzles and Retaining Kit for #10041 Hopper Gun, #10202	2
	Replacement Sole Kit for #10229, #10230, #10231 EZ-Stride® Stilts, #10237	2
	Replacement Strap for #10231, #10230, #10229 EZ-Stride® Stilts, #10236	4
	Leg Band Kit for #10231, #10230, #10229 EZ-Stride® Stilts, #10238	2
	Leg Tube Clamping Kit for #10231, #10230, #10229 EZ-Stride® Stilts, #10239	2
	Adj. Heel Bracket Kit for #10231, #10230, #10229 EZ-Stride® Stilts, #10240	2

DRYWALL ASSORTMENTS

Includes 24" header, hooks, and five of each item.



Item No.	Description	Pack Qty.
1191	Drywall Assortment, Blue Steel	
	6" Taping Knife, Blue Steel, #191	5
	8" Taping Knife, Blue Steel, #192	5
	10" Taping Knife, Blue Steel, #193	5
	12" Taping Knife, Blue Steel, #194	5
10003	ProGrip2™ Taping Knife Assortment	
	8" Taping Knife, Stainless Steel, #90758	5
	10" Taping Knife, Stainless Steel, #90760	5
	12" Taping Knife, Stainless Steel, #90762	5
10004	ProGrip2™ Taping Knife Assortment	
	8" Taping Knife, Blue Steel, #90748	5
	10" Taping Knife, Blue Steel, #90750	5
	12" Taping Knife, Blue Steel, #90752	5

CARBIDE 100X® ASSORTMENTS

Both assortments come with 12" header and hooks. Includes three of each item.



Item No.	Description	Pack Qty.
6142	Carbide 100X® Scraper Assortment	
	1" Carbide 100X® Scraper, #808	3
	2" Carbide 100X® Scraper, #803	3
	2-3/8" Carbide 100X® Scraper, #806	3
	1" Carbide 100X® Triangle Blade, #828	3
	2" Carbide 100X® Double-Edge Blade, #813	3
	2-3/8" Carbide 100X® Double-Edge Blade, #814	3
6141	Carbide 100X® Scraper Assortment with Knobs	
	1" Carbide 100X®, #808	3
	2" Carbide 100X® Scraper with Knob, #804	3
	2-3/8" Carbide 100X® Scraper with Knob, #807	3
	1" Carbide 100X® Triangle Blade, #828	3
	2" Carbide 100X® Double-Edge Blade, #813	3
	2-3/8" Carbide 100X® Double-Edge Blade, #814	3

Both assortments come with 12" header and hooks. Includes three of each item.



Item No.	Description	Pack Qty.
10063	Softgrip Carbide 100X® Scraper Assortment	
	1" Triangle Softgrip Carbide 100X®, #10016	3
	2" Softgrip Carbide 100X®, #10017	3
	2-3/8" Carbide 100X®, #10019	3
	1" Triangle Blade Carbide 100X®, #828	3
	2" Double-Edge Blade Carbide 100X®, #813	3
	2-3/8" Double-Edge Blade Carbide 100X®, #814	3
10062	Softgrip Carbide 100X® Scraper Assortment with Knobs	
	1" Triangle Softgrip Carbide 100X®, #10016	3
	2" Softgrip Carbide 100X® with Knob, #10018	3
	2-3/8" Softgrip Carbide 100X® with Knob, #10020	3
	1" Triangle Blade Carbide 100X®, #828	3
	2" Double-Edge Blade Carbide 100X®, #813	3
	2-3/8" Double-Edge Blade Carbide 100X®, #814	3

PRO-X-TEND™ ASSORTMENTS

Includes floor stand and either two (7033) or three (7034) of each item.



Item No.	Description	Pack Qty.
7033	Extension Pole Display Two of Each Pole 2'-4' Pro-X-Tend™ #90724	2
	3'-6' Pro-X-Tend™ #90726	2
	4'-8' Pro-X-Tend™ #90728	2
	6'-12' Pro-X-Tend™ #90722	2
7034	Extension Pole Display Three of Each Pole 2'-4' Pro-X-Tend™ #90724	3
	3'-6' Pro-X-Tend™ #90726	3
	4'-8' Pro-X-Tend™ #90728	3
	6'-12' Pro-X-Tend™ #90722	3

Countertop Displays

Countertop displays boost selling impact and increase sales.

PROGRIP®/PROGRIP2™ DISPLAYS



Item No.	Description	Pack Qty.
1283	ProGrip® 4-in-1 Bucket Opener, 5/Counter Display Box, #683	1
10173	ProGrip2™ 8-in-1 Painter's Scraper, 10/Counter Display Box, #90173	1
10199	ProGrip2™ 6-in-1 Glazier's Knife, 10/Counter Display Box, #90199	1

MISCELLANEOUS DISPLAYS



Item No.	Description	Pack Qty.
1034	Hobby Knife, Snap-Off Blade, 13-Points, 48/Counter Display Box	1
1044	Quick Change Utility Knife, 24/Counter Display Box	1
8150	3-Pack Plastic Knives, (#901, #902, #903)	15
1069	Mini Glazier Knife, 10/Counter Display Box, #369	1
1039	Painter's 6-in-1 Scraper, 10/Counter Display Box, #639	1

Kits

This handy kit contains tools to prepare all your painting projects.

KITS



Item No.	Description	Pack Weight	Pack Qty.
579	Painter's Prep Kit Kit Contains: Pistol Grip Scraper, Painter's Scraper and Safety 1st™ Scraper	3	5

Bucket Displays

Surveys show that almost 60% of store customers often buy items at the spur of the moment. Our bucket displays help attract and sell this bonus business.

BUCKET DISPLAYS



Item No.	Description	Pack Qty.
101	Plastic Neon Razor Blade Holder and Blade, 50/Bucket, #114	1
10312	Blade Holder with Plastic Blade, 25/Bucket, #10266 Carded	1
102	Bucket of 5/Pack Razor Blades (100 Packs of 5 = 500 Blades)	1
125	Hobby Knife, Snap-Off Blade, 40/Bucket, #124, 13-Points	1
130	Safety 1st™ Razor Scraper, 50/Bucket, #105	1
1052	ProCut® Rasp N' Knife,® 10/Bucket, #352	1

Display Strip Promotions

Display strips are a quick, convenient way to add extra merchandising space to the selling floor. They help capture impulse sales and add profits.

DISPLAY STRIPS

Item No.	Description
15100	3-1/2" Safety 1st™ Glass Scraper, 12/Display Strip
15105	Safety 1st™ Razor Scraper, 12/Display Strip
15110	Razor Blade, 12/Display Strip
15114	Single-Edge Blade Scraper/Holder, 12/Display Strip
15116	Snap-Off Replacement Blades for #123, 12/Display Strip
15123	Snap-Off Blade Knife, 12/Display Strip
15124	Hobby Knife, 12/Display Strip
15279	Brush Comb Cleaner, 12/Display Strip
15287	12' Retractable Tape Measure, 12/Display Strip
15366	Utility Knife, Top Trigger, 12/Display Strip
15411	Swivel Pot Hook, 12/Display Strip
15416	Wallcovering Seam Roller, 12/Display Strip
15434	10" Paint Guide, 12/Display Strip
15597	1-1/4" Retractable Scraper/Spreader, 12/Display Strip
15690	4" Scraper, Big Blade, 10/Display Strip
20560	4" Profab™ Roller Covers, 2 Pk, 1/2" Nap, 12/Display Strip
20561	4" Smoothfoam™ Roller Covers, 2 Pk, 12/Display Strip
20562	4" EZ-Roll™ Roller Covers, 2 Pk, 3/8" Nap, 12/Display Strip
20563	EZ-Corner™ 4" Foam Corner Roller, 12/Display Strip



Bucket Tree Display

Base is 26" and the height with the header is 63". Order any 12 items from below and receive 12 buckets, one easy-to-assemble tree and one header, FREE.* Just dump the items ordered into the plastic buckets and watch your sales grow.

BUCKET TREE DISPLAY PRODUCTS

Item No.	Description
102	Razor Blade Holders and Blades in Bucket, 500 Count (100 Boxes, 5/Box)
105	Safety 1st™ Scraper with 1 Single-Edge Razor Blade, 40 Count
110	10 Razor Blades, 20 Count, (2 Packs, 10/Pack)
114	Plastic Neon Razor Blade Holder and Blade, 60 Count
119	Heavy-Duty Snap-Off Blade Knife with 1 Blade, 8-Points, 10 Count
138	Glass Cutter, 10 Count
180	1-1/4" Putty Knife, Stainless Steel, Stiff, 10 Count
181	3" Scraper, Stainless Steel, Stiff, 10 Count
182	1-1/4" Putty Knife, Stainless Steel, Flex, 10 Count
183	3" Putty Knife, Stainless Steel, Flex, 10 Count
260	Wire Paint Can Opener, 100 Count
287	12' Retractable Tape Measure, Aluminum Case, 12 Count
356	Safety 1st™ Utility Scraper with 1 Utility Blade, 10 Count
393	3" Plastic Refinishing Tool, 10 Count
411	Swivel Pot Hook, 10 Count
415	1" Plastic Roller and Handle, Flat Surface, Single Bracket, UPC Labeled, 20 Count
434	10" Paint Guide (Same Style as #430), 20 Count
465	1-1/8" Putty Knife, Tang-Driven, Flex, 10 Count
466	3" Scraper, Tang-Driven, Stiff, 10 Count
468	Tack Cloth, 30 Count
572	Mini Brush Set, 3-Piece, Stainless Steel, Brass and Nylon, 12 Count
743	7-1/2" Mini Pry Bar, 10 Count
902	1-1/2" Putty Knife, Flex, 20 Count
903	3" Putty Knife, Flex, 20 Count
908	3" Spreader, V-Notch, Plastic, 20 Count
909	3" Spreader, Square-Notch, Plastic, 20 Count
1034	Hobby Knife, Snap-Off Blade, 13-Points, 48 Count
5791	Clear Buckets (12 for #6164 Bucket Tree)
6164	Bucket Tree Display

*When ordering, add #5791-Buckets (12), #6164-Tree (1) and #5968-Header Card (1) and mark them FREE. (You must order 12 items from above in standard packs to equal order quantity.)



Lectric® Wallpaper Steamer

Profitable tool for rentals. Steamer operates on 110V, 15 amp household current. Draws 1,500 watts. Comes with narrow and standard steam pans, 15' steam hose, 15' electric cord with GFI housing and extra water glass. Includes rental form pad. U.L. listed—CSA in Canada.

LECTRIC® WALLPAPER STEAMER



Item No.	Description	Type of Packaging	Pack Weight	Pack Qty.
5687*	Lectric® Wallpaper Steamer	Boxed	40	1

Floor Stripper

Fast, smooth way for customers to strip off carpet, vinyl or ceramic tile. Floor stripper features an eccentric drive (no belts) and has an adjustable cutting angle. Operates on 110V, 10 amp current. Stripper blades come in four sizes.

FLOOR STRIPPERS



Item No.	Description	Type of Packaging	Pack Weight	Pack Qty.
7080*	Electric Floor Stripper, 3/4 HP, without Blade	Boxed	75	1



Item No.	Description	Type of Packaging	Pack Weight	Pack Qty.
7001	3" x 10" Floor Stripper Blade – Use for Tough Rubber Back Carpet or Tile	Carded	1	1
7002	3" x 16" Floor Stripper Blade – Use for Rubber Back Carpet Only	Carded	1	1
7003	4" x 6" Floor Stripper Blade – Use for Tile or Sheet Goods on Linoleum or Concrete	Carded	1	1
7004	5" x 6" Floor Stripper Blade – Use for Tile or Sheet Goods on Wood Floors	Carded	1	1

*1-Year Limited Warranty. See www.warnertool.com or call 800-444-0606 for details.



Customer Service:

800-444-0606 | 763-559-4740

Fax Numbers:

800-455-9883 | 877-927-6370 | 763-559-0613 | 763-559-1364

Consumer Inquiries:

877-Warner-1, or visit **www.warnertool.com** for dealer locator

13435 Industrial Park Blvd., Minneapolis, MN 55441-3899

www.warnertool.com