



**The best paint jobs start with
Scotch® Painter's Tape.**





We are excited to introduce an updated line of Scotch® Painter's Tapes!

The best painters know that every job is unique, but they all start the same way: with the right preparation. Prepping with a painter's tape from Scotch® Brand means you have a family of tapes specifically designed for your surfaces. By choosing to use the right tape, you're choosing to end up with a better result.

The best paint jobs start with Scotch® Painter's Tape.



How to choose the right tape for the job.

Scotch®

Painter's Tape

SURFACE AND ADHESION LEVEL

First determine what type of surface you'll be masking, then choose the appropriate tape.

Delicate surfaces like wallpaper and fresh paint (24 hours to 7 days old) require tapes with gentle adhesive, such as Scotch® Delicate Surface Painter's Tape

Rough surfaces like brick and concrete require more aggressive tapes with very strong adhesive, such as Scotch® Rough Surface Painter's Tape

Challenging coatings like lacquers require a tape with rubber adhesive, such as Scotch® Rough Surface Painter's Tape

ENVIRONMENTAL CONDITIONS

Temperatures between 50°F and 100°F and clean, dry surfaces are ideal

Cool temperatures and sunlight can affect some tapes' adhesive properties

Most Scotch® Painter's Tapes are UV resistant for use whenever tape will be exposed to direct sunlight

KEY BENEFITS

For sharp paint lines:

choose ScotchBlue™ Ultra Sharp Lines or ScotchBlue™ Sharp Lines Painter's Tapes with Edge-Lock™ Technology



For tear-free removal:

use tapes with poly backing such as ScotchBlue™ Ultra Sharp Lines or Scotch® Exterior Surface Painter's Tape



For a straight tear off the roll:

use tapes with poly backing such as ScotchBlue™ Ultra Sharp Lines or Scotch® Exterior Surface Painter's Tape





ScotchBlue™
Original
Multi-Surface Painter's Tape



Multi-Surface Painter's Tapes

Whether your vision is a fresh new color or a bold, trendy look, we can help you mask and protect — so you can reveal great results the first time. Our Multi-Surface Painter's Tapes allow your creativity to shine through, with ultra sharp paint lines and the ability to leave painter's tape up longer on multiple surfaces.

2090
ORIGINAL

**FOR SMOOTH OR LIGHTLY
TEXTURED SURFACES**

**USE ON
WALLS, TRIM, BASEBOARDS,
TILE & GLASS**

14-DAY
CLEAN REMOVAL

MEDIUM
ADHESIVE





ScotchBlue™
Sharp Lines
 Multi-Surface Painter's Tape



2093
SHARP LINES

**FOR SMOOTH OR LIGHTLY
 TEXTURED SURFACES**

**USE ON
 WALLS, TRIM, BASEBOARDS,
 TILE & GLASS**

21-DAY
 CLEAN REMOVAL

MEDIUM
 ADHESIVE



ScotchBlue™
Ultra Sharp Lines
 Multi-Surface Painter's Tape



2098
ULTRA SHARP LINES

**FOR SMOOTH OR LIGHTLY
 TEXTURED SURFACES**

**USE ON
 WALLS, TRIM, BASEBOARDS,
 TILE & GLASS**

28-DAY
 CLEAN REMOVAL

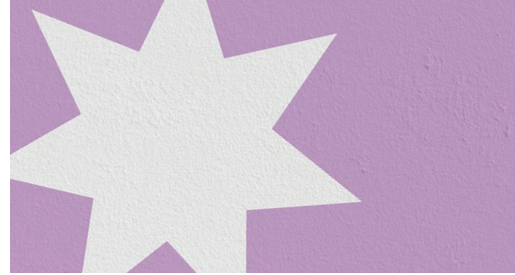
MEDIUM
 ADHESIVE





Surface-Specific Painter's Tapes

Sometimes, your project involves challenging or less-than-ideal surface conditions. That's why we've developed quality paint prep and masking products to help make sure you've got the best tape for the job. Make sure your prep work keeps up with you. No matter the surface, Scotch® Painter's Tape is up for the challenge.



Scotch®
Delicate Surface
Washi Painter's Tape



2080
GENTLE REMOVAL

**FOR SMOOTH OR LIGHTLY
TEXTURED SURFACES
AND CREATING STRIPES
AND PATTERNS**

**USE ON
PAINTED DRYWALL, FRESHLY
PAINTED WALLS,* WOOD
FLOORS, WALLPAPER,
VENEERS & CABINETS**

60-DAY
CLEAN REMOVAL

GENTLE
ADHESIVE

*At least
24 hours old





**Scotch®
Exterior Surface
Painter's Tape**

**Scotch®
Rough Surface
Painter's Tape**



2097

WEATHERPROOF

2060

EXTRA STRENGTH

**FOR SMOOTH AND
SEMI-SMOOTH
EXTERIOR SURFACES**

**FOR ROUGH TEXTURED
SURFACES**

**USE ON
GLASS, METAL, VINYL,
PAINTED WOOD & HUMID
CONDITIONS**

**USE ON
CONCRETE, BRICK, STUCCO,
ROUGH WOOD &
LACQUER COATINGS**

10-DAY
CLEAN REMOVAL

**VERY
STRONG**
ADHESIVE

5-DAY
CLEAN REMOVAL

**VERY
STRONG**
ADHESIVE

INNOVATIVE POLY-TAPE
**TEAR
FREE
REMOVAL**

+

**90°
SNAP
TEAR**





Scotch®

Masking Tapes

The right prep makes all the difference in achieving professional-looking results. From simple projects to those that need special considerations, start your project by prepping with Scotch® Masking Tape, and you're on your way to a great paint job.



**Scotch®
Heavy Duty
Masking Tape**



**2020+
HEAVY DUTY**

**FOR NON-DAMAGEABLE
SURFACES**

**USE ON
VINYL, CARPET, METAL,
PLASTIC &
LACQUER COATINGS**

3-DAY
CLEAN REMOVAL

STRONG
ADHESIVE





Masking Solutions

The best products are even better when you have the best tools. The ScotchBlue™ Painter's Tape Applicator makes large projects more manageable and gives you a consistent, quality application every time. ScotchBlue™ Tape + Plastic Dispenser helps provide the ultimate protection against drips and splatters. The best paint jobs start with Scotch® Painter's Tape.



ScotchBlue™ Tape + Plastic Dispenser



PTD2093

**FOR SMOOTH OR LIGHTLY
TEXTURED SURFACES**

**USE ON
WALLS, TRIM, BASEBOARDS,
TILE AND GLASS**

21-DAY
CLEAN REMOVAL

MEDIUM
ADHESIVE

ScotchBlue™ Painter's Tape and plastic combined in one product

Easy to apply and readjust

Static cling helps plastic stay in place

Plastic unfolds to 24" or 48" long



ScotchBlue™ Painter's Tape Applicator



TA-3

**FOR SMOOTH OR LIGHTLY
TEXTURED SURFACES**

**USE ON
WALLS, TRIM, BASEBOARDS,
TILE AND GLASS**

14-DAY
CLEAN REMOVAL

MEDIUM
ADHESIVE

Rolls smoothly and applies flush along baseboards and casing

Proprietary rollers designed to ride along curves/contours of molding

Built-in metal blade provides a straight, even cut

Refills easily and dispenses standard 1.41"/36mm tape

Works left to right or right to left

Includes starter roll of ScotchBlue™ Original Painter's Tape #2090

Tips for perfect paint prep.

PREPARATION

Clean the surface you're going to tape using a damp rag. Allow the surface to dry completely.

APPLICATION

Tape all the surfaces you want to keep paint-free: baseboards, windows, tiles and other areas.



Tear off about 2 to 3 feet of tape at a time, laying each new piece of tape over the end of the previous piece.



Press down as you go, using your fingers to lay tape into surface depressions.



Secure tape by pressing the edge down with a putty knife or 5-in-1 tool. For textured surfaces, seal the edge of the tape with the existing base paint color of the wall.

REMOVAL

For best results, remove as soon as you've applied the last coat of paint, or after the paint is dry to the touch.



Remove tape slowly, pulling it back on itself at a 45° angle from the original line of tape.



If the adhesive sticks to the surface, try pulling at a 90° angle.



If the tape pulls paint up with it, try lightly scoring the edge of the tape with a razor blade before continuing to remove tape.

Scotch®

Painter's Tape

Choose the right tape for the job.

Good prep is key to pulling off amazing results. When choosing a painter's tape, make sure you determine the right product for your surface.

Get more painting tips and techniques at ScotchBrand.com/PaintersTape.

★
recommended

●
alternate

WALLS & CEILINGS

Lightly Textured Drywall (painted 1-7 days ago)

Lightly Textured Drywall (painted over 7 days ago)

Wallcoverings – Solid Vinyl, Wood

Wallpaper

Plaster Walls

BASEBOARDS & DOOR TRIM

Wood Trim/Baseboards

Aluminum, Metal

Vinyl

FLOOR

Finished or Engineered Hardwood

Unfinished Hardwood

Carpet

Marble, Slate

Brick, Stone, Grout

Concrete, Cement

Vinyl, Laminate, Linoleum

OTHER INTERIOR SURFACES

Cabinets

Countertops

Tile, Caulk

Window Glass

Hardware

Brick Wall or Fireplace

Plastic

Veneers

Lacquer Coatings

EXTERIOR SURFACES

Brick, Stone, Grout

Concrete, Cement

Hardware

Window Glass

Trim (metal, wood)

Trim (vinyl)

Siding (wood, non-rough clapboard)

Siding (vinyl)

MULTI-SURFACE PAINTER'S TAPES

SURFACE-SPECIFIC PAINTER'S TAPES

MASKING TAPES



Original
2090

Sharp Lines
2093

Ultra Sharp Lines
2098

Delicate
2080

Exterior
2097

Rough
2060

Heavy Duty
2020+

Surface	Original 2090	Sharp Lines 2093	Ultra Sharp Lines 2098	Delicate 2080	Exterior 2097	Rough 2060	Heavy Duty 2020+
Acrylic Enamel	●	★	●	★			
Aluminum				★			
Asphalt	●	★	●				
Brick	●	●	★				●
Concrete	●	●	★				●
Enamel	●			★		★	●
Exterior Siding	●	●	★			★	★
Galvanized Steel	●	●	★			★	●
Glass				★			
Grout	●	●	★				
Hardwood	●	★	●				★
Interior Siding	●	●	★				
Latex Enamel	●	●	★				
Masonry	●	●	★				
Metals	●	●	★				
Paint	●	●	★				
Plastic	●	●	★				
Stucco	●	●	★				
Textured Surfaces	●	●	★				
Tile	●	●	★				
Unfinished Wood	●	●	★				
Vinyl	●	●	★				
Walls	●	●	★				
Windows	●	●	★				
Wood	●	●	★				
Wrought Iron	●	●	★				
Zinc Plating	●	●	★				

Test tape/surface compatibility before use, as results may vary. None of the ScotchBlue™ Painter's Tapes are recommended for use on lacquered surfaces.

Point of Purchase Materials

Header Examples

8-Foot

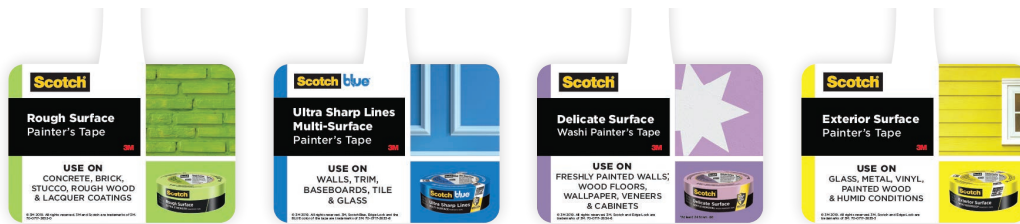
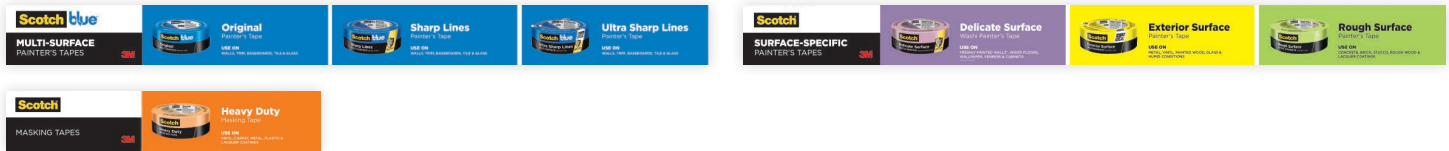


4-Foot

2-Foot



Channel Rail Strip Examples



Shelf Talker Examples

The best paint jobs start with **Scotch Painter's Tape**

Introducing the updated line of Scotch® Painter's Tapes

2090	2093	2098	2080	2097	2060	2020+
Original Multi-Surface Painter's Tape	Sharp Lines Multi-Surface Painter's Tape	Ultra Sharp Lines Multi-Surface Painter's Tape	Delicate Surface Washi Painter's Tape	Exterior Surface Painter's Tape	Rough Surface Painter's Tape	Heavy Duty Masking Tape
USE ON WALLS, TRIM, BASEBOARDS, TILE & GLASS	USE ON WALLS, TRIM, BASEBOARDS, TILE & GLASS	USE ON WALLS, TRIM, BASEBOARDS, TILE & GLASS	USE ON FRESHLY PAINTED WALLS, WOOD FLOORS, WALLPAPER, VENEERS & CABINETS	USE ON METAL, VINYL, PAINTED WOOD, GLASS & HUMID CONDITIONS	USE ON CONCRETE, BRICK, STUCCO, ROUGH WOOD & LACQUER COATINGS	USE ON VINYL, CARPET, METAL, PLASTIC & LACQUER COATINGS
MEDIUM	MEDIUM	MEDIUM	GENTLE	VERY STRONG	VERY STRONG	STRONG
14-DAY CLEAN REMOVAL	21-DAY CLEAN REMOVAL	28-DAY CLEAN REMOVAL	60-DAY CLEAN REMOVAL	10-DAY CLEAN REMOVAL	5-DAY CLEAN REMOVAL	3-DAY CLEAN REMOVAL

Counter Mat Example

Contact your shopper marketer for ordering information.

Secondary Display Options

Single Case Displays



Permanent Counter Spinners



Mixed Floor Display



Floor Displays



Contact your shopper marketer for ordering information.

Ordering Information

Catalog No.	Name	Consumer UPC	Shipper UPC	Rolls/ Unit	Units/ Shipper
ScotchBlue™ Ultra Sharp Lines Multi-Surface Painter's Tape					
2098-36CC-XS	ScotchBlue™ Ultra Sharp Lines Painter's Tape, 1.41 in x 45 yd (36mm x 41,1m)	000-76308-72658-4	500-76308-72658-9	1	8
ScotchBlue™ Sharp Lines Multi-Surface Painter's Tape					
2093-24NC	ScotchBlue™ Sharp Lines Painter's Tape, 0.94 in x 60 yd (24mm x 54,8m)	000-51141-32030-4	500-51141-32585-4	1	36
2093-36NC	ScotchBlue™ Sharp Lines Painter's Tape, 1.41 in x 60 yd (36mm x 54,8m)	000-51141-32032-8	500-51141-32584-7	1	24
2093-48NC	ScotchBlue™ Sharp Lines Painter's Tape, 1.88 in x 60 yd (48mm x 54,8m)	000-51141-32034-2	500-51141-32586-1	1	18
2093-24EC	ScotchBlue™ Sharp Lines Painter's Tape, 0.94 in x 60 yd (24mm x 54,8m)	000-51141-32030-4	000-51141-92580-6	1	24
2093-36EC	ScotchBlue™ Sharp Lines Painter's Tape, 1.41 in x 60 yd (36mm x 54,8m)	000-51141-32032-8	000-51141-92581-3	1	16
2093-48EC	ScotchBlue™ Sharp Lines Painter's Tape, 1.88 in x 60 yd (48mm x 54,8m)	000-51141-32034-2	000-51141-92582-0	1	12
ScotchBlue™ Original Multi-Surface Painter's Tape					
2090-18NC	ScotchBlue™ Original Painter's Tape, 0.70 in x 60 yd (18mm x 54,8m)	000-51115-03680-4	000-51115-11665-0	1	48
2090-24NC	ScotchBlue™ Original Painter's Tape, 0.94 in x 60 yd (24mm x 54,8m)	000-51115-03681-1	000-51141-33128-7	1	36
2090-36NC	ScotchBlue™ Original Painter's Tape, 1.41 in x 60 yd (36mm x 54,8m)	000-51115-03682-8	000-51141-33129-4	1	24
2090-48NC	ScotchBlue™ Original Painter's Tape, 1.88 in x 60 yd (48mm x 54,8m)	000-51115-03683-5	000-51141-33130-0	1	18
2090-72NC	ScotchBlue™ Original Painter's Tape, 2.83 in x 60 yd (72mm x 54,8m)	000-21200-98031-2	000-21200-46985-5	1	12
2090-24AP	ScotchBlue™ Original Painter's Tape, 0.94 in x 60 yd (24mm x 54,8m)	000-51115-03681-1	500-51115-03681-6	1	36
2090-36AP	ScotchBlue™ Original Painter's Tape, 1.41 in x 60 yd (36mm x 54,8m)	000-51115-03682-8	500-51115-03682-3	1	24
2090-48MP	ScotchBlue™ Original Painter's Tape, 1.88 in x 60yd (48mm x 54,8m)	000-51115-03683-5	500-51115-09127-3	1	24
2090-18EC	ScotchBlue™ Original Painter's Tape, 0.70 in x 60 yd (18mm x 54,8m)	000-51115-03680-4	006-38060-27370-8	1	32
2090-24EC	ScotchBlue™ Original Painter's Tape, 0.94 in x 60 yd (24mm x 54,8m)	000-51115-03681-1	000-76308-90626-9	1	24
2090-36EC	ScotchBlue™ Original Painter's Tape, 1.41 in x 60 yd (36mm x 54,8m)	000-51115-03682-8	000-51125-00413-8	1	16
2090-48EC	ScotchBlue™ Original Painter's Tape, 1.88 in x 60 yd (48mm x 54,8m)	000-51115-03683-5	500-76308-90635-6	1	12
2090-24GP	ScotchBlue™ Original Painter's Tape, 0.94 in x 60 yd (24mm x 54,8m)	000-51115-03681-1	000-51115-12016-9	1	12
2090-36GP	ScotchBlue™ Original Painter's Tape, 1.41 in x 60 yd (36mm x 54,8m)	000-51115-03682-8	000-51115-12044-2	1	8
2090-24AP9	ScotchBlue™ Original Painter's Tape, 0.94 in x 60 yd (24mm x 54,8m)	000-51115-09171-1	500-51115-09171-6	9	4
2090-36AP3	ScotchBlue™ Original Painter's Tape, 1.41 in x 60 yd (36mm x 54,8m)	000-76308-92804-9	500-76308-92804-4	3	8
2090-36AP6	ScotchBlue™ Original Painter's Tape, 1.41 in x 60 yd (36mm x 54,8m)	000-51115-09221-3	500-51115-09221-8	6	4
2090-48TP6	ScotchBlue™ Original Painter's Tape, 1.88 in x 60yd (48mm x 54,8m)	000-51115-09168-1	500-51115-09168-6	6	4
2090-24EC3	ScotchBlue™ Original Painter's Tape, 0.94 in x 60 yd (24mm x 54,8m)	000-76308-91144-7	500-76308-91144-2	3	8
2090-24EP6	ScotchBlue™ Original Painter's Tape, 0.94 in x 60 yd (24mm x 54,8m)	000-51141-31887-5	000-51141-33139-3	6	4
2090-36EP4	ScotchBlue™ Original Painter's Tape, 1.41 in x 60 yd (36mm x 54,8m)	000-51141-31883-7	000-51141-33140-9	4	4
2090-48EP3	ScotchBlue™ Original Painter's Tape, 1.88 in x 60 yd (48mm x 54,8m)	000-51141-31888-2	000-51141-33141-6	3	4
ScotchBlue™ Painter's Tape Applicator					
TA3-SB	ScotchBlue™ Painter's Tape Applicator, English-only packaging	006-38060-26224-5	506-38060-26224-0	1	6
TA3-SB-ESF	ScotchBlue™ Painter's Tape Applicator, English, Spanish, French packaging	006-38060-26237-5	506-38060-26237-0	1	6
ScotchBlue™ Tape + Plastic					
PTD2093EL-24-S	ScotchBlue™ Tape + Plastic with Dispenser	000-51141-93749-6	000-51141-99419-2	1	6
PT2093EL-24	ScotchBlue™ Tape + Plastic Refill	000-51141-34065-4	500-51141-34065-9	1	6
PTD2093EL-48-S	ScotchBlue™ Tape + Plastic with Dispenser	000-51141-34064-7	500-51141-34064-2	1	6
PT2093EL-48	ScotchBlue™ Tape + Plastic Refill	000-51141-34067-8	500-51141-34067-3	1	6
Scotch® Delicate Surface Painter's Tape					
2080-24NC	Scotch® Delicate Surface Painter's Tape, 0.94 in x 60 yd (24mm x 54,8m)	000-51131-79748-2	000-51141-31854-7	1	36
2080-36NC	Scotch® Delicate Surface Painter's Tape, 1.41 in x 60 yd (36mm x 54,8m)	000-51131-79749-9	000-51141-31855-4	1	24
2080-48NC	Scotch® Delicate Surface Painter's Tape, 1.88 in x 60 yd (48mm x 54,8m)	000-51131-79750-5	000-51141-31856-1	1	18
2080-18EC	Scotch® Delicate Surface Painter's Tape, 0.70 in x 60 yd (18mm x 54,8m)	000-51131-80988-8	000-51141-59904-5	1	32
2080-24EC	Scotch® Delicate Surface Painter's Tape, 0.94 in x 60 yd (24mm x 54,8m)	000-51131-79748-2	000-51141-92576-9	1	24
2080-36EC	Scotch® Delicate Surface Painter's Tape, 1.41 in x 60 yd (36mm x 54,8m)	000-51131-79749-9	000-51141-92577-6	1	16
2080-48EC	Scotch® Delicate Surface Painter's Tape, 1.88 in x 60 yd (48mm x 54,8m)	000-51131-79750-5	000-51141-92578-3	1	12
Scotch® Exterior Surface Painter's Tape					
2097-36EC-XS	Scotch® Exterior Surface Painter's Tape, 1.41 in x 45 yd (36mm x 41,1m)	000-51141-36200-7	000-51141-36202-1	1	16
2097-48EC-XS	Scotch® Exterior Surface Painter's Tape, 1.88 in x 45 yd (48mm x 41,1m)	000-51141-36197-0	000-51141-36199-4	1	12

This chart has the information you need to order Scotch® Painter's Tapes products. Additional products are also available. Please contact your Shopper Marketer or our Category Development Manager with questions or for further information.

Catalog No.	Name	Consumer UPC	Shipper UPC	Rolls/ Unit	Units/ Shipper
Scotch® Rough Surface Painter's Tape					
2060-18AP	Scotch® Rough Surface Painter's Tape, 0.70 in x 60.1 yd (18mm x 55m)	000-21200-71131-2	500-21200-71131-7	1	48
2060-24AP	Scotch® Rough Surface Painter's Tape, 0.94 in x 60.1 yd (24mm x 55m)	000-21200-71132-9	500-21200-71132-4	1	36
2060-36AP	Scotch® Rough Surface Painter's Tape, 1.41 in x 60.1 yd (36mm x 55m)	000-21200-71133-6	500-21200-71133-1	1	24
2060-48MP	Scotch® Rough Surface Painter's Tape, 1.88 in x 60.1 yd (48mm x 55m)	000-21200-71134-3	500-21200-71134-8	1	24
2060-18AR-BK	Scotch® Rough Surface Painter's Tape, 0.70 in x 60.1 yd (18mm x 55m), BULK	000-21200-72065-9	500-21200-72065-4	1	48
		Each stack of tape is held together with clear film. Rolls not intended to be sold individually. No UPC on primary.			
2060-24AR-BK	Scotch® Rough Surface Painter's Tape, 0.94 in x 60.1 yd (24mm x 55m), BULK	000-21200-72066-6	500-21200-72066-1	1	36
		Each stack of tape is held together with clear film. Rolls not intended to be sold individually. No UPC on primary.			
2060-36AR-BK	Scotch® Rough Surface Painter's Tape, 1.41 in x 60.1 yd (36mm x 55m), BULK	000-21200-72067-3	500-21200-72067-8	1	24
		Each stack of tape is held together with clear film. Rolls not intended to be sold individually. No UPC on primary.			
2060-48TR-BK	Scotch® Rough Surface Painter's Tape, 1.88 in x 60.1 yd (48mm x 55m), BULK	000-21200-72068-0	500-21200-72068-5	1	24
		Each stack of tape is held together with clear film. Rolls not intended to be sold individually. No UPC on primary.			
Scotch® Heavy Duty Masking Tape					
2020+-24AP	Scotch® Heavy Duty Masking Tape, 0.94 in x 60.1 yd (24mm x 55m)	000-51125-00539-5	500-51125-00539-0	1	36
2020+-36AP	Scotch® Heavy Duty Masking Tape, 1.41 in x 60.1 yd (36mm x 55m)	000-51125-00541-8	500-51125-00541-3	1	24
2020+-48TP	Scotch® Heavy Duty Masking Tape, 1.88 in x 60.1 yd (48mm x 55m)	000-76308-49737-8	500-76308-49737-3	1	24
2020+-24AP9	Scotch® Heavy Duty Masking Tape, 0.94 in x 60.1 yd (24mm x 55m)	000-76308-92845-2	500-76308-92845-7	9	4
2020+-36AP6	Scotch® Heavy Duty Masking Tape, 1.41 in x 60.1 yd (36mm x 55m)	000-76308-92844-5	500-76308-92844-0	6	4
2020+-48TP6	Scotch® Heavy Duty Masking Tape, 1.88 in x 60.1 yd (48mm x 55m)	000-76308-15095-2	500-76308-15095-7	6	4



Construction and Home Improvement Markets Division
3M Center, Building 223-4S-02
St. Paul, MN 55144-1000 USA

© 3M 2019. All rights reserved. 3M, ScotchBlue, Scotch, Edge-Lock, the BLUE color of the tape and the Plaid Design are trademarks of 3M.
Please recycle. Printed in U.S.A. 70-0717-4356-4