



Airless Spray Equipment

TACKLE ANY JOB WITH CONFIDENCE!



Featuring a full line of Airless Paint Sprayers, Heavy-Duty Pressure Washers, Texture Sprayers, and Accessories.

Power Application Equipment For The Painting Industry

Table of Contents

Page 1.....	Why Airless Spray - Selection Chart
Page 2.....	Zip Spray™ ESP, 1700, 2100 Plus
Page 3.....	Zip Spray 2300 Plus, 2700 Plus, 3100 Plus
Page 4.....	Zip Spray 3600 G Plus & Accessories
Page 5.....	Airless Accessories - Guns
Page 6.....	Airless Accessories - Pressure Rollers, Mini Poles
Page 7.....	Airless Accessories - Maxi Poles, Gun Filters, Repair Kits, AngleHead™ & Fittings
Page 8.....	Tip Selection Guide Reversible Tip
Page 9.....	Tip Selection Guide Standard Reversible Uni-Tip™, Striping & Fine Finish
Page 10.....	Super Zip™ Tip Selection Guide
Page 11.....	Flat Tip Selection Guide
Page 12.....	Texture Application Guide
Page 13.....	Texture Intro - Zip-Tex™ 650
Page 14.....	Texture Zip-Tex 900, ASM Professional Contractor Hopper Gun
Page 15.....	Texture Hopper, Accessories & Replacement Parts
Page 16.....	Pressure Washers - Zip Clean™ 2525
Page 17.....	Pressure Washers - Zip Clean 2730, 3030 & Accessories
Page 18.....	Fluids
Page 19.....	Merchandising Displays
Page 20.....	Electric Airless Product Specifications & Comparison Guide
Page 21.....	Gas Engine Airless Product Specifications, Zip-Tex Units, Pressure Washers & Comparison Guide



ASM MAKES PROJECTS A ZIP!

For use with a variety of coatings including stains, enamels, interior/exterior latex and oil-based paints.

EASIER! Professional results made easy!

Uniform and professional results are now a zip! ASM's Zip-Spray Airless Sprayers & Texture Units produce a high-quality finish on every job they tackle!

FASTER! Finish large projects fast!

ASM's Zip-Spray Airless Sprayers are up to 10X faster than brushing and 4 times faster than traditional rolling. Save time and increase your productivity.

AFFORDABLE! Save Money!

ASM's Zip-Spray Airless Sprayers & Texture Units pay for themselves in just over one project.

- Enjoy increased productivity and finish the job fast
- Contractors save money by reducing both on-the-job time and down time
- Save money on paint with professional coverage and a smooth finish every time

Why Airless Spray?

Airless spray is 10 times faster than brushing, and 4 times faster than traditional rolling. Airless spray provides even material coverage on all types of surfaces. You can spray most common coatings, including stains, latex, and oil-based paints. And best of all, airless spray saves you money!

Zip-Spray™ airless spray systems are designed to save time by increasing your productivity and reducing downtime. They are durable, perfect for rugged job site conditions. They are easy to operate and transport for convenience as you work. And you'll find that Zip-Spray airless sprayers still offer the innovation and value you've come to expect from ASM.

Airless Equipment Selection Chart

	Highest Operating Pressure	Delivery Rating	Max Tip Size Supported	Recommended Annual Use	Typical Coatings	Ideal Users
Zip-Spray ESP	2800 psi (19.3 MPa, 193 bar)	.24 gpm (.91 lpm)	.015 in (.381 mm)	Roll: 1000 gal (3785 L) Spray: 175 gal (662 L)	Varnish, Enamels, Primers, Interior/Exterior Latex	Light-Duty
Zip-Spray 1700	3000 psi (20.7 MPa, 207 bar)	.31 gpm (1.17 lpm)	.017 in (.432 mm)	Roll: 1500 gal (5678 L) Spray: 300 gal (1135 L)	Varnish, Enamels, Primers, Interior/Exterior Latex	Medium-Duty
Zip-Spray 2100 PLUS	3300 psi (20.7 MPa, 207 bar)	.47 gpm (1.8 lpm)	.021 in (.483 mm)	1000 gal (3785 L)	Varnish, Enamels, Primers, Interior/Exterior Latex	Heavy-Duty
Zip-Spray 2300 PLUS	3300 psi (22.7 MPa, 227 bar)	.54 gpm (2.0 lpm)	.023 in (.584 mm)	1250 gal (4732 L)	Varnish, Enamels, Primers, Interior/Exterior Latex & Heavier Bodied Latex	Heavy-Duty
Zip-Spray 2700 PLUS	3300 psi (22.7 MPa, 227 bar)	.86 gpm (3.25 lpm)	.027 in (.686 mm)	1500 gal (5678 L)	Varnish, Enamels, Primers, Interior/Exterior Latex & Heavier Bodied Latex	Pro-Duty
Zip-Spray 3100 PLUS	3300 psi (22.7 MPa, 227 bar)	1.1 gpm (4.2 lpm)	.031 in (.787 mm)	1500 gal (5678 L)	Varnish, Enamels, Primers, Interior/Exterior Latex & Heavier Bodied Latex	Pro-Duty
Zip-Spray 3600 G PLUS	3300 psi (22.7 MPa, 227 bar)	1.25 gpm (4.7 lpm)	.036 in (.912 mm)	1500 gal (5678 L)	Block Fillers & Elastomers, Enamels, Primers, Interior/Exterior Latex & Heavier Bodied Latex	Pro-Duty

Zip-Spray ESP

Light-Duty Electric Airless Sprayer

The Zip-Spray ESP offers convenience, durability, and value for tradesmen with occasional painting needs, homeowners, and do-it-yourselfers. Ideal for use with paint spraying and paint pressure rolling applications (pressure roller kit sold separately).

Zip-Flush™ Cleaning

- Connect to a garden hose and clean the pump, hoses, and gun in minutes!

Lightweight Design

- Portable and easy to store. Weighs only 13 lbs (5.9 kg)
- 4-legged stand is durable and stable

Demand Delivery System

- Pump runs only when gun trigger is activated, reducing sprayer wear
- Draws from a 1 or 5 gallon container

Simple Piston Design

- For reliable performance and long life
- Max tip supported .015

Includes:

- ASM 200 Contractor Spray Gun with 4-Finger Trigger
- 515 Uni-Tip with Uni-Tip Hand-Tight™ Base
- 1/4 in x 25 ft (6.4 mm x 7.5 m), 3300 psi (22.7 MPa, 227 bar) airless paint hose
- Pump Life™ Protectant Fluid



Part# 248772
UPC# 769946084481

Zip-Spray 1700

Medium-Duty Electric Airless Sprayer

The Zip-Spray 1700 is ideal for moderate spraying needs, including property maintenance, remodeling, and light commercial projects.

Zip-Flush Cleaning

- Connect to a garden hose and clean the pump, hoses, and gun in minutes!
- Pump lower is modular design for easy repair and maintenance

Easy to transport and store

- Rugged cart with fold-down handle and 75 ft (23 m) capacity hose rack is maneuverable and convenient to store
- Pail hook holds paint bucket for easy transport on job site and reduces spilling

Durable Piston Pump

- Stainless steel pump resists corrosion for long life
- Modular piston is removable for easy quick repair and replacement
- Max tip supported .017

Includes:

- 500 Series Contractor Spray Gun with 2-Finger Trigger
- 517 Uni-Tip with Uni-Tip Hand-Tight Base
- 1/4 in x 50 ft (6.4 mm x 15 m), 3300 psi (22.7 MPa, 227 bar) airless paint hose
- Pump Life Protectant Fluid



Modular Displacement Pump
Part# 245569

Part# 233789
UPC# 769946075632

Zip-Spray 2100 Plus

Heavy-Duty Electric Airless Sprayer

The Zip-Spray 2100 Plus is great for contractors, property owners, handymen, and remodelers with frequent spraying needs.

Industry-Proven Hardened Chrome and Stainless Steel Piston Pump

Outlasts competitive pumps by 65%.

Durable Piston Pump

- Double-Acting - pumps paint on both the up and the down stroke for consistent delivery
- Long-Lasting Packings - Ultra high molecular weight polyethylene (UHMWPE) construction
- Wiper Ring Packing - Wipes the inside of the pump clean, extending life up to 50%
- Rotating Ball Checks - Maximize component life by eliminating wear on a single surface
- Trouble free electro-mechanical pressure control for smooth spraying.
- Max tip supported .021

- Pump lower knocks off using only a hammer for easy repair and maintenance
- Reliable DC motor
- Long extension cords can be used

Includes:

- 500 Series Contractor Spray Gun with 2-Finger Trigger
- 517 Uni-Tip with Uni-Tip Hand-Tight Base
- 1/4 in x 50 ft (6.4 mm x 15 m), 3300 psi (22.7 MPa, 227 bar) airless paint hose
- Pump Life Protectant Fluid, Packing Seal™



Part# 247482
UPC# 769946090048

Part# 247485
UPC# 769946090055

Zip-Spray 2300 Plus

Heavy-Duty Electric Airless Sprayer

The Zip-Spray 2300 Plus is perfect for professionals who spray 3-5 times a week for most painting applications.

Heavy-Duty Piston Pump

- Pump lower knocks off easily for convenient maintenance and repair
- Max tip supported .023

Electronic Pressure Control

- Trouble free electro-mechanical variable speed pressure control for smooth spraying.

Fan-Cooled DC Motor

- Run longer extension cord

Full-Flow Manifold Filter

- Filter screen comes out with the cap for less mess
- Full-flow design flushes completely and cleans up quickly
- Reduces tip clogs and improves finish

Welded Steel-Chrome Plated Cart

- Features a retractable handle

Includes

- 500 Series Contractor Gun with 2-Finger Trigger
- 517 Uni-Tip with Uni-Tip Hand-Tight base
- 1/4 in x 50 ft (6.4 mm x 15 m) 3300 psi (22.7 MPa, 227 bar) airless paint hose
- Pump Life Protectant Fluid, Packing Seal



Zip-Spray 2700 Plus

Pro-Duty Electric Airless Sprayer

The Zip-Spray 2700 Plus is designed for professional contractors in many applications, from residential to commercial. Supports 2 guns.

Heavy-Duty Piston Pump

- Pump lower knocks off easily for convenient maintenance and repair
- Max tip supported .027

Electronic Pressure Control

- Maintains consistent fan pattern for a better finish

Enclosed Design, Fan-Cooled Brushless DC Motor

- Major components are protected from dirt, dust, and overspray
- Run longer extension cord

Full-Flow Manifold Filter

- Filter screen comes out with the cap for less mess
- Full-flow design flushes completely and cleans up quickly
- Reduces tip clogs and improves finish

Welded Steel-Chrome Plated Cart

- Features a retractable handle

Includes

- 500 Series Contractor Gun with 2-Finger Trigger
- 517 Uni-Tip with Uni-Tip Hand-Tight base
- 1/4 in x 50 ft (6.4 mm x 15 m) 3300 psi (22.7 MPa, 227 bar) airless paint hose
- Pump Life Protectant Fluid, Packing Seal



Zip-Spray 3100 Plus

Pro-Duty Electric Airless Sprayer

The Zip-Spray 3100 Plus is designed for professional contractors in many applications, from residential to commercial including some block filler and elastomers. Supports 2 guns.

Heavy-Duty Piston Pump

- Pump lower knocks off easily for convenient maintenance and repair
- Max tip supported .031

Electronic Pressure Control

- Maintains consistent fan pattern for a better finish

Enclosed Design, Fan-Cooled Brushless DC Motor

- Major components are protected from dirt, dust, and overspray
- Run longer extension cord

Full-Flow Manifold Filter

- Filter screen comes out with the cap for less mess
- Full-flow design flushes completely and cleans up quickly
- Reduces tip clogs and improves finish

Welded Steel-Chrome Plated Cart

- Features a retractable handle

Includes

- 500 Series Contractor Gun with 2-Finger Trigger
- 517 Uni-Tip with Uni-Tip Hand-Tight base
- 1/4 in x 50 ft (6.4 mm x 15 m) 3300 psi (22.7 Mpa, 227 bar) airless paint hose
- Pump Life Protectant Fluid, Packing Seal



Zip-Spray 3600 G Plus

Pro-Duty Gas Mechanical Airless Sprayer Complete

The Zip-Spray 3600 G Plus is perfect for professional painting contractors who demand high output and portability where electricity is unavailable or inconvenient. Sprays architectural coatings, light block fillers and light elastomerics. Supports up to 3 guns.

Full Flow Filter

- Cleans from the inside out
- Reduces tip clogs

Electronic Pressure Control

- Provides excellent spray pattern
- Superior spray finish

Honda power

- Highly reliable
- Portable Power

Drive System

- Heavy-duty clutch - Adjusts and aligns itself for long life
- Hardened gears - Durable and quiet operation

Heavy-Duty Chrome Over Steel Frame

- Rust resistant for long life

Heavy-Duty Pump

- Knocks off easily for convenient maintenance
- Long wearing rod
- Max tip supported .036

Drain Tube

- Safe, durable and built to last

Lift Handles

- One person loading and unloading

Includes

- 500 Series Contractor Gun with 2-Finger Trigger
- 517 Uni-Tip with Uni-Tip Hand-Tight base
- 1/4 in x 50 ft (6.4 mm x 15 m) 3300 psi (22.7 MPa, 227 bar) airless paint hose
- Pump Life Protectant Fluid, Packing Seal



Part# 247560
UPC# 769946090161

ACCESSORIES

Airless Hose

- 3300 psi (22.7 MPa, 227 bar) rating
- Swivel couplers and spring guards on both ends
- Can be coupled with other airless hose
- Female fitting ends.

Part # HSE1450	1/4 in (6.4 mm) x 50 ft (15 m)
Part # HSE3850	3/8 in (9.5 mm) x 50 ft (15 m)
Part # 245449	1/4 in (6.4 mm) x 25 ft (7.5 m)



Whip Hose

- Whip Hoses add flexibility and reduce operator fatigue
- | | |
|----------------|---------------------------------------|
| Part # HSE3163 | 3 ft (0.9 m) x 3/16 in (4.8 mm) (MXF) |
| Part # HSE3165 | 5 ft (1.5 m) x 3/16 in (4.8 mm) (MXF) |



Gun Hose Kits

- 500 Series Contractor Gun with Uni-Tip, Hand-Tight Base, and 1/4 in (6.4 mm) x 50 ft (15 m) Airless Hose ("G" thread only)

Part # 256244	(4-Finger)
Part # 256245	(2-Finger)
- 400 Series Professional Gun with Uni-Tip, Uni-Tip Hand-Tight Base, and 1/4 in (6.4 mm) x 50 ft (15 m) Airless Hose

Part # 248249	("G" thread only) (4-Finger)
Part # 248250	("G" thread only) (2-Finger)
- 400 Series Professional Gun with Super-Zip, Hand-Tight Base and 1/4 in (6.4 mm) x 50 ft (15 m) Airless Hose

Part # 451-SHF ("F" thread), 451-SHG ("G" thread) (4-Finger)
Part # 456-SHF ("F" thread), 456-SHG ("G" thread) (2-Finger)
- 300 Series Contractor Gun with Super-Zip, Hand-Tight Base, and 1/4 in (6.4 mm) x 50 ft (15 m) Airless Hose

Part # 351-SHF ("F" thread), Part # 351-SHG ("G" thread) (4-Finger)
Part # 356-SHF ("F" thread), Part # 356-SHG ("G" thread) (2-Finger)



Gun & Hose Connectors

Part # 4410	3/8 in (npt) x 3/8 in (npt) MBE
Part # 4413	1/4 in (npt) x 1/4 in (npt) Hex Nipple MBE
Part # 4414	1/4 in (npt) x 3/8 in (npt) MBE
Part # 162485	3/8 in (npt) x 3/8 in (npsm) MBE
Part # 239663	1/4 in (npt)(M) x 1/4 in (npsm)(F) Swivel

THREAD SIZE ON DIFFUSER "F" = 11/16 "G" = 7/8

500 Series Professional Airless Spray Gun

The ASM 500 Contractor Gun is new and designed for durability, spraying performance and a long life

- Lightweight gun with easy trigger pull
 - Includes 517 Uni-Tip & Guard
 - Heavy-duty swivel allows easy gun movement
 - Split handle for easy filter removal
 - Available "G" thread only
 - Maximum working pressure 3600 psi (24.8 MPa, 248 bar)
- Part # 289316 2-Finger Gun with Uni-Tip
 Part # 288681 4-Finger Gun with Uni-Tip
 Repair Kit # 288817



400 Series Professional Airless Spray Gun

- Improved! Life of the 400 Series gun before repair is equal to or better than that of competitive guns
 - Heavy-duty swivel allows easy gun movement
 - Anodized body resists corrosion
 - Split handle for easy access to filter
 - Includes 517 Uni-Tip & Guard
 - Available with "F" and "G" diffusers to match all systems
 - Maximum working pressure 3600 psi (24.8 MPa, 248 bar)
- Part # 248240 2-Finger Gun with Uni-Tip ("G" thread only)
 Part # 456-SF, 456-SG 2-Finger Gun with Super-Zip
 Part # 248239 4-Finger Gun with Uni-Tip ("G" thread only)
 Part # 451-SF, 451-SG 4-Finger Gun with Super-Zip
 Repair Kit # 4427-F, 4427-G



300 Series Professional Airless Spray Gun

- Improved! New needle design for reduced spitting and long life
 - Includes 517 Uni-Tip
 - Available with "F" and "G" diffusers to match all systems
 - Maximum working pressure 3600 psi (24.8 MPa, 248 bar)
- Part # 248238 2-Finger Gun with Uni-Tip ("G" thread only)
 Part # 356-SF, 356-SG 2-Finger Gun with Super-Zip Tip
 Part # 248237 4-Finger Gun with Uni-Tip ("G" thread only)
 Part # 351-SF, 351-SG 4-Finger Gun with Super-Zip Tip
 Repair Kit # 3027-F, 3027-G



200 Series Airless Spray Gun

- Easy-access in-handle paint filter reduces tip clogging and improves finish
 - Comfortable 4-Finger Trigger
 - Ideal for small projects
 - Includes 515 Uni-Tip & Guard
 - Maximum working pressure 3600 psi (24.8 MPa, 248 bar)
- Part # 251-U 4-Finger Gun with Uni-Tip
 Part # 251-SG 4-Finger Gun with Super-Zip Tip
 Not repairable



Combo Gun

- Well-balanced, lightweight, comfortable handle and trigger
 - In-handle gun filter and internal trigger lock
 - Add a Mini Pole or Maxi Pole for extra reach
- Part # 248241 with 517 Uni-Tip and Uni-Tip Hand-Tight Base ("G" thread only)
 Part # 6700-SF, 6700-SG with 517 Super-Zip and Super-Zip Hand-Tight Base
 Repair Kit # 6727-F, 6727-G



Zip-Roll™ Pressure Roller

The Zip-Roll pressure roller accessory attaches and is fed paint from your airless pump allowing you to use your system to roll in areas where spraying is not practical. Provides smooth, continuous delivery of paint to all types of surfaces. Just trigger gun to release paint to roller. Pressure rolling is 4 times faster than standard rolling!

- Extends reach – no need for a ladder
- Chrome-plated stainless steel frame provides rust resistance and eliminates streaking
- Hand-Tight system for easy assembly – no tools required

- Convenient Zip-Clip™ holds roller cover securely on frame and quickly releases for easy cleanup
- Few parts for quicker cleaning time

Zip-Roll Pressure Roller

(Includes Combo Gun)

	3 ft	6 ft
Wrench-Tight with Flat Guard	Part # 970309(F)	Part # 970609(F)
Wrench-Tight with Flat Guard	Part # 970309(G)	Part # 970609(G)
Hand-Tight with Zip Guard	Part # 980309(F)	Part # 980609(F)
Hand-Tight with Zip Guard	Part # 980309(G)	Part # 980609(G)
Hand-Tight with Super Zip Guard	Part # 980309(SG)	Part # 980609(SG)
Hand-Tight with Super Zip Guard	Part # 980309(SF)	Part # 980609(SF)
Zip-Roll Frame only	Part # 244278	

Zip-Roll Pressure Roller

Attaches to gun that comes with units.

Includes: 45° "G" thread gun adapter, 24 in. (61 cm) extension, 9 in (23 cm) roller frame & 1/2 in (13 cm) nap cover
Part # 287713



Zip-Roll Frame Only
Part # 244278

Zip-Roll Pressure Roller Covers

High-quality, all-purpose pressure roller covers. Available in a variety of naps.

Part # 7721	Smooth Surfaces – 9 in x 3/8 in (23 cm x .95 cm)
Part # 7722	Semi-Smooth Surfaces – 9 in x 1/2 in (23 cm x 1.27 cm)
Part # 7723	Medium Surfaces – 9 in x 3/4 in (23 cm x 1.90 cm)
Part # 7724	Rough Surfaces – 9 in x 1 1/4 in (23 cm x 3.18 cm)

Must be ordered in multiples of 6.



45° Swivel Fitting Kit

To be used between the gun and Heavy-Duty Extension for pressure rolling. ("G" to "G" thread)

Part # 239531 Kit Includes (239531, 166969, 114049)



Mini Poles

- Durable stainless steel construction for rust resistance
- Hand-Tight system allows for easy attachment to gun, without tools
- Two or more poles can be combined for extended reach

- Available in 4 lengths and "F" and "G" thread sizes to fit all guns
- For spraying ceilings, overhangs, floors, and decks

3400 Series

With Uni-Tip Hand-Tight Base ("G" thread only)

6 in (15.2 cm)	Part # 248233
12 in (30.5 cm)	Part # 248234
18 in (45.7 cm)	Part # 248235
24 in (61.0 cm)	Part # 248236

3400 Series
Mini Pole



With Super-Zip Hand-Tight Base

6 in (15.2 cm)	Part # 3406-SF	Part # 3406-SG
12 in (30.5 cm)	Part # 3412-SF	Part # 3412-SG
18 in (45.7 cm)	Part # 3418-SF	Part # 3418-SG
24 in (61.0 cm)	Part # 3424-SF	Part # 3424-SG

With Flat Tip Base Wrench Tight

6 in (15.2 cm)	Part # 2406-F	Part # 2406-G
12 in (30.5 cm)	Part # 2412-F	Part # 2412-G
18 in (45.7 cm)	Part # 2418-F	Part # 2418-G
24 in (61.0 cm)	Part # 2424-F	Part # 2424-G

3500 Series*(with Anglehead)

With Uni-Tip Hand-Tight Base ("G" thread only)

6 in (15.2 cm)	Part # 255258
12 in (30.5 cm)	Part # 255259
18 in (45.7 cm)	Part # 255260
24 in (61.0 cm)	Part # 255261

3500 Series
Mini Pole



With Super-Zip Hand-Tight Base

6 in (15.2 cm)	Part # 3506-SF	Part # 3506-SG
12 in (30.5 cm)	Part # 3512-SF	Part # 3512-SG
18 in (45.7 cm)	Part # 3518-SF	Part # 3518-SG
24 in (61.0 cm)	Part # 3524-SF	Part # 3524-SG

With Flat Tip Base Wrench Tight

6 in (15.2 cm)	Part # 2506-F	Part # 2506-G
12 in (30.5 cm)	Part # 2512-F	Part # 2512-G
18 in (45.7 cm)	Part # 2518-F	Part # 2518-G
24 in (61.0 cm)	Part # 2524-F	Part # 2524-G

Maxi Poles

Hand-Tight Maxi Poles accept Hand-Tight adapters and an additional Maxi Pole or Mini Pole for 12 ft maximum length.

- Includes Anglehead™ to adjust spray angle
- Available in "F" and "G" thread sizes to fit all guns

With Uni-Tip Hand-Tight Base ("G" thread only)		With Super-Zip Hand-Tight Base		With Flat Tip Base	
Part # 248242	2 ft (60.9 cm)	Part # 7402-SF, 7402-SG	2 ft (60.9 cm)	Part # 7302-F, 7302-G	2 ft (60.9 cm)
Part # 248243	3 ft (91.4 cm)	Part # 7403-SF, 7403-SG	3 ft (91.4 cm)	Part # 7303-F, 7303-G	3 ft (91.4 cm)
Part # 248244	4 ft (121.9 cm)	Part # 7404-SF, 7404-SG	4 ft (121.9 cm)	Part # 7304-F, 7304-G	4 ft (121.9 cm)
Part # 248245	6 ft (182.9 cm)	Part # 7406-SF, 7406-SG	6 ft (182.9 cm)	Part # 7306-F, 7306-G	6 ft (182.9 cm)
Part # 248246	9 ft (274.2 cm)	Part # 7409-SF, 7409-SG	9 ft (274.2 cm)	Part # 7309-F, 7309-G	9 ft (274.2 cm)

Part # 3430-G, 3430-F Connect two poles
Part # 233951 Pole Gasket (1)



Maxi Pole

AngleHead

- In-line AngleHead Swivel provides accurate spraying at any height or angle
- Swivels to 90° (shown) for easy spraying of challenging areas
- Tip not included

Part # 7506A	("F" thread) no base included
Part # 7506AG	("G" thread) no base included
Part # 248247	with Uni-Tip Hand-Tight Base ("G" thread only)
Part # 7506-SF	with Super-Zip Hand-Tight Base
Part # 7506-SG	with Super-Zip Hand-Tight Base
Part # 7551-G	Pole Gun Adapter, Hand-Tight
Part # 7551-F	Pole Gun Adapter, Hand-Tight
Part # 87500G	With Flat Tip Guard, Wrench-Tight
Part # 87500F	With Flat Tip Guard, Wrench-Tight
Part # 7556-G	Pole Gun Adapter, Wrench-Tight
Part # 7556-F	Pole Gun Adapter, Wrench-Tight



0° to 90° (90° Shown)

Gun Filters – 2-Pack

- Stainless steel mesh to eliminate rust

200 Series

Part # 248677 60 Mesh & 100 Mesh (1 ea.)

300, 400, 500 Series and Combo Gun

Part # 4435-2	Extra Fine 200 Mesh	Red for varnishes and lacquers
Part # 4434-2	Fine 100 Mesh	Yellow for enamels and stains
Part # 4433-2	Medium 50 Mesh	White for latex paints
Part # 4436-2	Coarse 30 Mesh	Green for heavy-bodied paints



Gun Repair Kits

- Includes Ball Valve Plunger Assembly and Diffuser

Part # 288817	500 Gun repair kit
Part # 4427-F, 4427-G	400 Series gun
Part # 3027-F, 3027-G	300 Series gun
Part # 6727-F, 6727-G	Combo gun

Note: 400 Series Gun Repair Kits may be used in 300 Series Guns.



Pump Repair Kits

Part # 245078	Zip-Spray ESP
Part # 245569	Zip-Spray 1700
Part # 244194	Zip-Spray 2100 Plus
Part # 244194	Zip-Spray 2300 Plus
Part # 248212	Zip-Spray 2700, 3100, 3400G, 3600G

"F" to "G" Adapter

- Converts 11/16 in (17 mm) "F" Thread to 7/8 in (22 mm) "G" Thread
Part # 248248

Strainer Bags

Part # 238769 Strainer Bags available in multiples of 25

Reversible Tip Systems

From state-of-the-art features to our color-coded tip handles, we make spray tips easier to use and select. Plus, we provide the technology to give you durable, reliable equipment that delivers a consistent spray pattern for a variety of materials.

- Patented diffuser allows atomization at lower pressures, reducing tip wear and extending tip life
- Pinned handle resists twisting and breakage
- Reversible for easy cleaning
- Liquid-honed for long life and double-tested to ensure accurate spray pattern and flow rate
- Highest-quality carbide tip produces longer useable life
- Color-coded handles for easy identification

ASM's color-coded tip handle and corresponding tip selection guide make it simple to select the right orifice and fan pattern for your painting application. Follow the steps below for easy tip selection.

Spray Tip Application Guide

- 1 - Identify the surface you will be spraying
- 2 - Choose your coating
- 3 - Determine your spray pattern width [spraying 12 in (30.5 cm) from the surface]
- 4 - Follow chart to tip number

Tip handles are color-coded by orifice (tip hole) size for easy identification on the job site.

- Red — 200 Mesh, For Varnishes and Lacquers
- Yellow — 100 Mesh, For Enamels and Stains
- White — 50 Mesh, For Latex
- Green — 30 Mesh, For Heavy-Bonded Paints

How to Determine Spray Tip Size:

EXAMPLE:
#5 = 1/2 Fan Width or 2 x 5 = 10 Inch Fan

517

#17 Orifice is diameter of opening in thousandths

Surface	Coating	Fan Width in Inches	Grey	Red	Orange	Yellow	Blue	Green	Purple	Brown	Black	Black	Black	Black	Black	Black	Black	Filter Mesh Color Code		
			.009	.011	.013	.015	.017	.019	.021	.023	.025	.027	.029	.031	.035	.045	.061			
Wood Interiors,	Lacquer, Varnish, Shellac	2 in																Red		
		4 in	209	211														Red		
		6 in	309	311														Red		
		8 in	409	411	413													Red		
		10 in	509	511	513													Red		
		12 in	609		613													Red		
	Alkyd Stain, Alkyd Enamel, Sanding Sealer	4 in		211	213														Yellow	
		6 in		311	313														Yellow	
		8 in		411	413	415													Yellow	
		10 in				515	517	519											Yellow	
		12 in				615	617	619	621	623									Yellow	
		16 in																	White	
Interior Walls, Ceilings, Drywall	Latex, Vinyl, Acrylic	2 in			113	115												Yellow		
		4 in		211	213	215												Yellow		
		6 in			313	315												Yellow		
		8 in				415	417	419											Yellow	
		10 in				515	517	519											Yellow	
		12 in				615	617	619	621	623									Yellow	
	Roof Overhangs	Primer, Enamel, Latex, Acrylic	2 in			113	115												Yellow	
			4 in			213	215	217											Yellow	
			6 in				315	317	319											Yellow
			8 in				415	417	419											Yellow
			10 in				515	517	519											Yellow
			12 in				615	617	619											Yellow
Masonry, Block, Stucco, Concrete	Vinyl, Oil Base, Alkyd	6 in																Yellow		
		8 in				415	417	419	421	423								Yellow		
		10 in				515	517	519	521	523									Yellow	
		12 in							621	623									Yellow	
		16 in				615	617	619											White	
		18 in																	White	
	Latex, Acrylic	8 in				417	419	421	423										Yellow	
		10 in				517	519	521	523										Yellow	
		12 in				617	619	621	623										Yellow	
		16 in																	White	
		18 in																	White	
		20 in																	White	
Smooth Elastomeric	Smooth Elastomeric	6 in										327						White		
		8 in						419	421	423	425	427	429	431	435			White		
		10 in						519	521	523	525	527		531	535			White		
		12 in						619	621	623	625			631	635	645	661		White	
		16 in													835				White	
		18 in																	White	
	Wood Exteriors, Shingle Siding, Shiplap	Exterior Stain	6 in			315													Yellow	
			8 in			415	417												Yellow	
			10 in			515	517	519											Yellow	
		Vinyl, Acrylic, Latex	6 in			315														Yellow
			8 in			415	417	419	421											Yellow
			10 in			515	517	519	521											Yellow
Open Joists Ceiling Areas RIB Deck Ceilings	Mil White	6 in			315	317	319	321										White		
		8 in				417	419	421										White		
		10 in				517	519	521										White		
	High Build	6 in						619	621										White	
		8 in				315	317												White	
		10 in				415	417	419	421	423	425								White	
	Dry Fall	6 in				517	519	521	523	525									White	
		8 in							621	623	625								White	
		12 in																	White	

Uni-Tip

Universal Reversible Spray Tips

- The Uni-Tip is universal with major brands, including Titan, SprayTECH, Graco RAC® IV and RAC 5 and Airlessco. Not compatible with Graco RAC X™, ASM Super-Zip or Zip-Tip™.
- Best quality carbide tip means a superior spray pattern and a longer useable fan pattern life
- The color-coded handle makes it easy to identify the tip size on the job
- Each tip individually tested for consistent fan and orifice size
- One-piece Uni-Tip seal means fewer parts on hand
- Uni-Tip seal is compatible with the full range of paints and solvents
- Pinned Handle resists twisting and breakage
- Nib on handle for seal replacement
Part # 69-XXX



Striping Uni-Tip

- Specifically manufactured to provide crisp, clean edges
- Available in all common striping tip sizes
Part # 69xxxST

Fine-Finish Uni-Tip

- All the features of the Uni-Tip Plus, double orifice gives greater break-up of fine-finish materials
- Provides the finest atomization and a high-quality finish
- Up to 85% transfer efficiency
Part # 69-FFXXX

Uni-Tip Hand-Tight Base/Guard (Tip not included)

- Aluminum won't rust
- Virtually eliminates paint buildup and dripping
- Easy no-tools assembly
- Quickly change from horizontal to vertical spray pattern
Part # 248200 "G" thread is 7/8" (22 mm)
Part # 249303 "F" thread is 11/16" (17 mm)



Uni-Tip Seal

- Easily installs without tools!
Part # 248228 (5-pack)



Standard Uni-Tips (69-XXX)

Fan Width in Inches	Grey .009	Red .011	Orange .013	Yellow .015	Blue .017	Green .019	Purple .021	Brown .023	Black .025	Black .027	Black .029	Black .031	Black .035	Black .045	Black .061
2 in			113	115											
4 in	209	211	213	215	217	219	221								
6 in	309	311	313	315	317	319	321	327							
8 in	409	411	413	415	417	419	421	423	425	427	429	431	435		
10 in	509	511	513	515	517	519	521	523	525	527		531	535		
12 in	609		613	615	617	619	621	623	625			631	635	645	661
16 in													835		

Striping Uni-Tips (69XXXST)

Fan Width in Inches	Yellow .015	Blue .017	Green .019	Purple .021	Black .027
4 in	215	217			
6 in	315	317	319	321	327
8 in		417			
10 in		517			
12 in	615	617			

Fine Finish Uni-Tips (69-FFXXX)

Fan Width in Inches	Red .011	Orange .013	Yellow .015	Blue .017	Green .019
4 in	211	213	215		
6 in	311	313	315		
8 in	411	413	415		
10 in		513		517	
12 in					619

Super-Zip

Reversible Spray Tips

- Liquid-honed and double-tested to ensure an accurate spray pattern
 - Patented diffusion chamber for superior atomization
 - Color-coded tip handles for easy selection
 - Reversible to quickly clear tip clogs
- Part # 59-xxx

Striping Super-Zips

- Specifically manufactured to provide crisp, clean edges
 - Available in all common striping tip sizes (213, 215, 315, 217, 317, 417, 219, 319, 419, 321, 421, 621, 323, 623, 625, 327, 627)
- Part # 59xxxST

Fine-Finish Super-Zips

- Double orifice gives greater break-up of fine-finish materials
 - Provides the finest atomization and a high-quality finish
 - Up to 85% transfer efficiency
- Part # 59FFXX-XXX

Super-Zip Hand-Tight Base/Guard

- Hand-Tight Base – no tools required!
 - Patented Cartridge Seal is compatible with all materials, will last through multiple tips and is spring-loaded for easy tip insertion and removal
 - Patented safety tab design locks for safe tip reversing when unclogging tip
 - Available to fit all makes of guns
- Part # 5901-F Fits "F" thread size - 11/16 in (17 mm)
 Part # 5901-G Fits "G" thread size - 7/8 in (22 mm)

Super-Zip Cartridge Seals

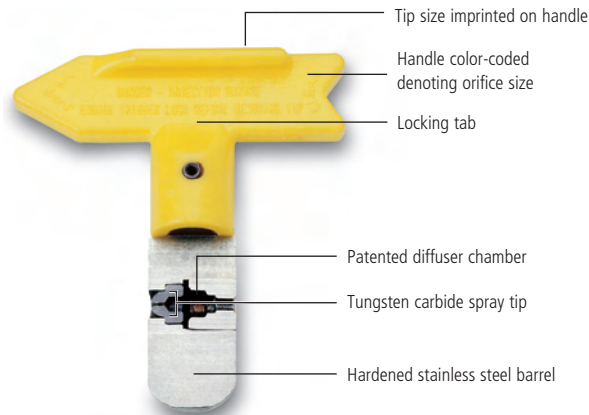
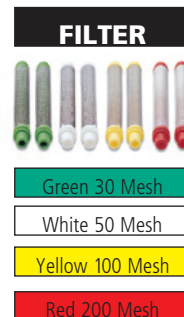
- Replace Cartridge Seals quickly, without tools
 - No loose gaskets
- Part # 5907 Hand-Tight Cartridge Seal

Super-Zip Selection Guide

FAN WIDTH IN INCHES	GREY	FILTER	RED	FILTER	ORANGE	FILTER	YELLOW	FILTER	BLUE	FILTER	GREEN	FILTER	PURPLE	FILTER	BROWN	FILTER	BLACK	FILTER	BLACK	FILTER	BLACK	FILTER
	.009 0.08		.011 0.12		.013 0.17		.015 0.23		.017 0.30		.019 0.36		.021 0.46		.023 0.55		.025 0.66		.027 0.77		.029 0.88	
2 in	•		111		113		115		117		119		121		•		•		•		•	
4 in	209		211		213		215		217		219		221		•		•		•		•	
6 in	309		311		313		315		317		319		321		323		325		327		•	
8 in	409		411		413		415		417		419		421		423		425		427		429	
10 in	•		511		513		515		517		519		521		523		525		527		529	
12 in	•		611		613		615		617		619		621		623		625		627		629	
14 in	•		•		•		715		717		719		721		723		725		•		729	
16 in	•		•		813		815		817		819		821		823		•		827		829	
18 in	•		•		•		915		917		•		921		•		925		•		•	

FAN WIDTH IN INCHES	BLACK	FILTER	BLACK	FILTER	BLACK	FILTER	BLACK	FILTER	BLACK	FILTER	BLACK	FILTER	BLACK	FILTER	BLACK	FILTER	BLACK	FILTER	BLACK	FILTER	BLACK	FILTER
	.031 1.02		.033 1.16		.035 1.31		.039 1.62		.041 1.79		.043 1.98		.045 2.16		.047 2.36		.049 2.57		.051 2.81		.053 3.00	
2 in	•		•		•		•		•		•		•		•		•		•		•	
4 in	•		•		•		•		•		•		•		•		•		•		•	
6 in	331		333		335		339		•		•		•		•		•		•		•	
8 in	431		433		435		439		441		443		445		447		449		451		453	
10 in	531		533		535		539		541		543		545		547		549		551		553	
12 in	631		633		635		639		641		643		645		647		649		651		653	
14 in	731		733		735		739		741		743		745		747		749		751		753	
16 in	831		833		835		839		•		•		•		•		•		•		•	
18 in	931		933		935		939		•		•		•		•		•		•		•	

REFERENCE
 ----- COLOR
 ----- ORIFICE SIZE
 ----- GPM / FLOW



	09	111	211	311	411	511	611	711
11	113	213	313	413	513	613	713	
13	115	215	315	415	515	615	715	
15	117	217	317	417	517	617	717	
17	119	219	319	419	519	619	719	
19	121	221	321	421	521	621	—	



Flat Tip Systems

Standard Flat Tips

- Flat Tips are universal and fit all makes of Flat Tip Bases
Part # 90-xxx

Flat Tip Base/Guard

- Flat Tip Bases are universal and are available to fit all makes of guns
- Accommodates Flat Tip-n-Gasket (93-xxx) and Standard Flat Tips (90-xxx)
Part # 420-F Fits "F" thread size - 11/16 in (17 mm)
Part # 420-G Fits "G" thread size - 7/8 in (22 mm)
- Separate tip gasket available in tubes of eight (8)
Part # 401-8



Flat Tip Selection Guide

FAN WIDTH IN INCHES	.007		.009		.011		.013		.015		.017		.019		.021		.023	
	0.04	FILTER	0.08	FILTER	0.12	FILTER	0.17	FILTER	0.23	FILTER	0.30	FILTER	0.36	FILTER	0.46	FILTER	0.55	FILTER
2 in	•		109		111		113		115		•		119		121		•	
4 in	207		209		211		213		215		217		219		221		223	
6 in	307		309		311		313		315		317		319		321		323	
8 in	407		409		411		413		415		417		419		421		423	
10 in	•		509		511		513		515		517		519		521		523	
12 in	•		609		611		613		615		617		619		621		623	
14 in	•		•		•		•		715		717		719		721		723	
16 in	•		•		•		813		815		817		819		821		823	
18 in	•		•		•		•		•		917		•		921		•	

REFERENCE

- ORIFICE SIZE
- GPM / FLOW

FAN WIDTH IN INCHES	.025		.027		.029		.031		.033		.035		.039		.043		.045		.051		.055	
	0.66	FILTER	0.77	FILTER	0.88	FILTER	1.02	FILTER	1.16	FILTER	1.31	FILTER	1.62	FILTER	1.98	FILTER	2.16	FILTER	2.81	FILTER	3.17	FILTER
2 in	•		•		•		•		•		•		•		•		•		•		•	
4 in	•		227		•		•		•		235		•		•		•		•		•	
6 in	325		327		•		331		•		•		•		•		•		•		•	
8 in	425		427		429		431		433		435		439		•		•		451		•	
10 in	525		527		529		531		533		535		•		543		•		•		•	
12 in	625		627		629		631		633		635		•		•		645		•		•	
14 in	725		•		729		•		•		735		•		•		•		•		•	
16 in	•		827		829		831		833		835		•		•		•		•		•	
18 in	925		•		•		•		•		935		•		•		•		•		•	



Texture Application Guide

Get the Interior and Exterior Texture Finish You Want

Interior Texture

Simulated Acoustic (Popcorn)



Orange Peel, Fine Splatter



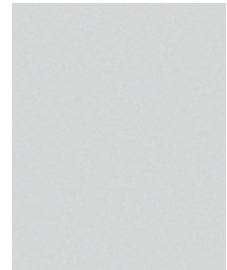
Splatter



Knockdown



Smooth, Level 5 and Skim Coat



Commonly Used Materials

- Ceiling Spray Textures Containing Polystyrene or Vermiculite Aggregate (Fine, Medium, Coarse)

- All-Purpose Joint Compounds
- Lightweight Joint Compounds
- Wall and Ceiling Spray Textures

- All-Purpose Joint Compounds
- Lightweight Joint Compounds
- Wall and Ceiling Spray Textures

- All-Purpose Joint Compounds
- Lightweight Joint Compounds
- Wall and Ceiling Spray Textures

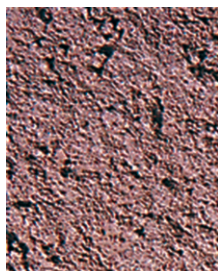
- All-Purpose Joint Compounds
- Lightweight Joint Compounds
- Wall and Ceiling Spray Textures
- Skim Coat Materials
- Wall Surfacing Materials

Exterior Texture Not suitable for stucco or EIFS materials

Textured Acrylics and Elastomers



Deck Coatings



Commonly Used Materials

- Textured Acrylic Materials
- Textured Elastomeric Materials

- Decorative and Anti-Skid Deck Coatings

Zip-Tex Spray Nozzles Part # 234153

Black 12 mm
Acoustics
Large Knockdown
Popcorn

Beige 4 mm
Fine Finish
Orange Peel

White 6 mm
Orange Peel
Fine Spatter

Gray 8 mm
Splatter
Small to Med
Knockdown

Texture Sprayers

ASM Zip-TEX texture units are manufactured by the worlds leading manufacturer of airless spray equipment. Our pumping systems are built rugged and are designed for large and small jobs offering a less fatiguing and better way to add texture coatings. ASM offers two texture spray systems for the contractor who is ready to graduate from the traditional hopper gun. ASM's texture units deliver a smooth material flow for uniform coverage and a consistent and professional pattern.

Interior Coatings:

- Popcorn
- Orange Peel
- Splatter
- Knockdown
- Smooth Level 5 or Skim Coat

Exterior Coatings:

- Textured Acrylics and Elastomers
- Deck Coatings
- Not suitable for Stucco or EIFS coatings

Zip-TEX 650

Interior Texture Sprayer

The Zip-TEX 650 is the perfect pumping system for tradesmen and contractors who are ready to graduate from a hopper gun to a faster, more productive, less-fatiguing spray rig. Just add air.

Innovative Pump-Only Texture Sprayer

- Small, lightweight and portable – easy to bring on and off the job site
- weight: 25 lbs (11.3 kg)

RotoFlex II™ Texture Pump

- Delivers smooth material flow for uniform coverage and a consistent pattern
- Provides material flow rates up to .65 gpm for faster applications

Superior Texture Projection

- Pumping system force-feeds material through the texture gun and projects texture farther than a traditional hopper gun

Material Hopper

- Holds 5 gallons of material, allowing you to complete a whole room without stopping to refill

Includes

Unit, Gun, 6 mm and 8 mm nozzles, 20 ft material hose and viscosity ball



Part # 254982
UPC # 69946089943

IMPORTANT:

- Designed for use with a user-supplied air compressor minimum air compressor rating 3.5 cfm at 40 psi; .09 m³/min

Zip-Tex 900

Interior Texture Sprayer

The all new Zip-Tex 900 is the perfect choice for the contractor who's looking to spray high-quality texture finishes with a simple-to-use, self-contained machine.

New RotoFlex II Texture Pump

- Features an innovative braided sling that provides extra support to the RotoFlex pump tube for higher performance and life
- Delivers smooth material flow for uniform coverage and a consistent spray pattern

New Higher-Production Performance Points

- Max output .9 gallons per minute (Finish jobs even faster)
- Material flow increased by more than 20% over the previous model 750.
- Material pressure max 60 psi, 4.2 bar boosted by more than 10% over the 750 – handle thicker mud mixes

New Higher-Capacity On-Board Air Compressor

- Compressor Air Output: 8.7 displacement cfm; 4.0 cfm at 45 psi; 4.0 m³/min
- 20% greater air output than the 750. Projects material further
- Complete air-consuming splatter and orange peel finishes jobs faster

New Larger-Capacity Hopper

- Holds 8 gallons of material for more time spraying between refills
- Ultra-low entry height of 32 inches makes filling the hopper easier

Exclusive Dual-Use Gun

- Versatile, patent-pending design converts quickly to a hopper gun for touch-up jobs
- Easy-to-use air trigger adjustments on the gun
- New through-handle air passage prevents material from contaminating the needle spring

New Single-Motor Design

- One motor operates the pump and air compressor, making the sprayer smaller and 15 lbs (7 kg) lighter
- Delivers 1.7 hp for optimal performance

Touch-Up Hopper (included)

- Attaches to air spray gun without tools for completing quick jobs and touch-ups
- 3/4-gallon capacity

Includes

Unit, Gun, 25 ft material and air hose, touch-up hopper, 4 nozzles and viscosity ball



Part # 254983
UPC # 769946089950

ASM Professional Hopper Gun

Sprays acoustics, drywall mud, waterproofing material, pool deck sealant, stucco, and most gravity-fed materials. Angled 1-1/2 gallon (5.7 L) hopper allows more material capacity for longer spraying before refills!

Zip-Tex 650 Gun

Part # 288906 Gun only

Zip-Tex 750, 900 and 1000

Part # 288905 Gun only
 Part # 246409 Gun including Hopper



Spray Nozzles & Replacement Parts

- Part # **234153** **Spray Nozzles**
 Beige, 4 mm — Fine Finish, Orange Peel
 White, 6 mm — Orange Peel, Fine Splatter
 Gray, 8 mm — Splatter, Small to Medium Knockdown
 Black, 12 mm — Acoustics, Large Knockdown, Popcorn

- Part # **234149** **25 ft (7.6 m) Material/Air Hose (Zip-Tex 750, 900 & 1000)**

- Part # **288622** **20 ft Material/Air Hose Kit for Zip-Tex 650**

- Part # **15C090** **Viscosity Ball – All Machines**

- Part # **234156** **RotoFlex Replacement Pump Hose (Zip-Tex 750 & 1000 only)**
 Recommended replacement after 2000-2500 gallons (7571-9463 L) of gypsum-based material

- Part # **288623** **RotoFlex II Replacement Pump Hose (Zip-Tex 650 & 900 only)**

- Part # **234159** **Gun Repair Kit (All guns except 288906 Gun)**

- Part # **258000** **Gun Repair Kit for 288906 Gun**

- Part # **234162** **Material Hose Plug and Hopper Gun Attachment Plug**

- Part # **234188** **Hopper Clamp**

Zip-Clean

Direct Drive Pressure Washers

Zip-Clean pressure washers offer innovative features to make your job easier, and reliable components to make you more productive. You'll spend less time on machine set-up with our one-hand hose connection and built-in chemical injector. Use Zip-Clean pressure washers for surface preparation before painting houses, decks, fences, buildings and more.

- Dependable Honda® overhead valve engines
- General® pump with unloader, thermal relief, and over-pressure protection
- Low-profile cart for easy transport; easy to lift
- Double swivel on high pressure hose prevents tangling
- Self-siphoning chemical hose
- Features a steel powder-coated cart, built-in chemical injector, nozzle holder, and gun-hose rack

Zip-Clean 2525

Perfect for those who need a washer heavy-duty enough to get the job done, without the investment of a commercial-grade model.

- 2500 psi (172 bar) at 2.5 gpm (9.5 lpm)
- 160cc Honda GC series motor
- Radial axial pump with thermal protection
- 30 ft (9.1 m) hose (Maximum)
- Includes chemical injector and set of 3 nozzles 0°, 15° and 40°
- 1 year limited warranty



Zip-Clean 2525

2500 psi (17.2 MPa, 172 bar)
160cc Honda GC series motor
Part # 246602
UPC # 769946080407

Includes:

- 30 ft (9.1 m) high pressure hose
- Heavy-duty gun and wand
- 4 color-coded quick-connect spray nozzles
(3 spray nozzles, 1 chemical injection nozzle)

Zip-Clean 2730

2700 psi (18.6 MPa, 186 bar) @ 2.4 gpm (9 lpm)
 200cc Honda OHV Engine
 Part # 245348
 UPC # 769946075663

Includes:

- 50 ft (15.2 m) high pressure non-marking hose
- Heavy-duty gun and wand
- 4 color-coded quick-connect spray nozzles (3 spray nozzles, 1 chemical injection nozzle)



Zip-Clean 3030

3000 psi (20.6 MPa, 206 bar) @ 3.0 gpm (11 lpm)
 270cc Honda OHV Engine
 Part # 245349
 UPC # 769946075670

Includes:

- 50 ft (15.2 m) high pressure non-marking hose
- Heavy-duty gun and wand
- 4 color-coded quick-connect spray nozzles (3 spray nozzles, 1 chemical injection nozzle)



Standard Nozzles (2525)(2730)

Part # 244768 - Includes: 0°, 15°, 25°, 40°
 Part # 805634 - Includes: Chemical Injector Nozzle
 Part # 805535 - 0° Red
 Part # 805536 - 15° Yellow
 Part # 805537 - 25° Green
 Part # 805538 - 40° White



Standard Nozzle (3030)

Part # 244769 - Includes: 0°, 15°, 25°, 40°
 Part # 805634 - Includes: Chemical Injector Nozzle
 Part # 805539 - 0° Red
 Part # 805540 - 15° Yellow
 Part # 805541 - 25° Green
 Part # 805542 - 40° White



Rotating Nozzle

Part # 198012

Oscillating Nozzle (Not Shown)

Part # 198013

High Pressure Non-Marking Hose

3/8 in x 50 ft (10 mm x 15 m), 3000 psi (21.0 MPa, 210 bar)
 Part # 245416 for 2730/3030

3/8 in x 30 ft (10 mm x 8 m), 3000 psi (21.0 MPa, 210 bar)
 Part # 118125 for 2525



Guns

Part # 244784
 Gun with vented composite wand handle and quick-connect fittings, 5000 psi (344 bar, 34.4 MPa) max. working pressure

Part # 246674 for use with 2525 only
 Gun only

Part # 118124 Gun Extension for 2525



Fluids

ASM fluids and protectants keep your equipment in top performing condition. ASM fluids are approved for use in all airless pumps.

Pump Life

- Protects pump from corrosion and rust during short- and long-term storage
 - Lubricates and cleans to help stop sticking valve seats
 - Freeze proof to -30° F (-34° C)
- Part # 245650 (8 oz, 237 ml; 48 per case)
245423 (32 oz, 946 ml; Available in multiples of 6)

Packing Seal

- Prevents coating material from adhering to the pump's piston rod
 - Prolongs pump packing life in all brands of piston pumps
- Part # 245427 (8 oz, 237 ml; Available in multiples of 6)
Part # 245428 (32 oz, 946 ml; Available in multiples of 12)

Hydraulic Fluid

- Non-foaming formula
 - Resists emulsifying and chemical breakdown
- Part # 245425 (32 oz, 946 ml; Available in multiples of 12)

Starter Kit

- For lubrication and protection
- Part # 245651 (8 oz, 237 ml; Pump Life) (4 oz, 119 ml; Packing Seal)



Visit your local Dealer for ASM Accessories located in these merchandise racks.

**Revolving Locking Tower
Floor Merchandiser**



Requires 4 Square feet
24 in Wide x 24 in Deep x 91 in High.

**Wall or Counter Locking
Merchandiser**



13 in Wide x 7 in Deep x 26 in or 30 in High
without header.

For more information contact ASM Customer Service at 1-800-854-4025

AIRLESS PRODUCT SPECIFICATIONS



Model	Zip-Spray ESP	Zip-Spray 1700	Zip-Spray 2100 Plus	Zip-Spray 2300 Plus	Zip-Spray 2700 Plus	Zip-Spray 3100 Plus
Part Number:	248772 (120V) 248850 (240V)*	233789 (120V)	247485 (Cart) 247482 (Stand) 247484 (240V Stand)* 247487 (240V Cart)*	247531 247533 (240V)*	247558 247565 (240V)*	247559
Max Tip:	.015	.017	.021	.023	.027	.031
Max psi/bar:	2800 psi (19.3 MPa, 19.3 bar)	3000 psi (20.7 MPa, 207 bar)	3300/227	3300/227	3300/227	3300/227
Max gpm/lpm:	.24 gpm (.91 lpm)	.31 gpm (1.17 lpm)	.47/1.8	.54/2.0	.86/3.3	1.1/4.2
Weight lbs/kg:	21 lbs	36 lbs	36 lbs Stand, 65 lbs Cart	66 lbs Cart	100 lbs	104 lbs
Max Hose Length:	75 ft (45.7/91.4 m) depending on tip size	150 ft (45.7/91.4 m) depending on tip size	150/300 ft (45.7/91.4 m) depending on tip size	150/300 ft (45.7/91.4 m) depending on tip size	150/300 ft (45.7/91.4 m) depending on tip size	150/300 ft (45.7/91.4 m) depending on tip size
Motor:	3/8 HP	3/4 HP	5/8 HP DC	7/8 HP	1.75 HP Brushless	2.0 HP Brushless
Generator Requirements:			3000W	3000W	5000W	5000W
Gun Support:					1 Gun .027 Tip 2 Guns .017 Tip	1 Gun .031 Tip 2 Guns .019 Tip
Sprayer Includes:	<ul style="list-style-type: none"> • 200 Contractor Spray Gun with 4-finger trigger • 515 Uni-Tip with Hand-Tight Base • Hose: 1/4 in x 25 ft (6.3mm x 7.6m), 3300 psi (22.7 MPa, 227 bar) airless paint hose • Pump Life Protectant Fluid 	<ul style="list-style-type: none"> • 500 Series Professional Airless Spray Gun with 2-finger trigger • 517 Uni-Tip with Uni-Tip Hand-Tight Base • Hose: 1/4 in x 50 ft (6.3mm x 15.2m), 3300 psi (22.7 MPa, 227 bar) airless paint hose • Pump Life Protectant Fluid 	<ul style="list-style-type: none"> • 500 Series Professional Airless Spray Gun with 2-finger trigger • 517 Uni-Tip with Uni-Tip Hand-Tight Base • Hose: 1/4" x 50' (6.4mm x 15m) 3300 psi (227 bar) • Pump Life Protectant Fluid 	<ul style="list-style-type: none"> • 500 Series Professional Airless Spray Gun with 2-finger trigger • 517 Uni-Tip with Uni-Tip Hand-Tight Base • Hose: 1/4" x 50' (6.4mm x 15m) 3300 psi (227 bar) • Pump Life Protectant Fluid 	<ul style="list-style-type: none"> • 500 Series Professional Airless Spray Gun with 2-finger trigger • 517 Uni-Tip with Uni-Tip Hand-Tight Base • Hose: 1/4" x 50' (6.4mm x 15m) 3300 psi (227 bar) • Pump Life Protectant Fluid 	<ul style="list-style-type: none"> • 500 Series Professional Airless Spray Gun with 2-finger trigger • 517 Uni-Tip with Uni-Tip Hand-Tight Base • Hose: 1/4" x 50' (6.4mm x 15m) 3300 psi (227 bar) • Pump Life Protectant Fluid
Pump Filter:			Includes Easy Out Pump Filter	Includes Easy Out Pump Filter	Includes Easy Out Pump Filter	Includes Easy Out Pump Filter
Easy Out Filter Screens:			<ul style="list-style-type: none"> • 60 Mesh - 245527 • 100 Mesh - 245528 • 200 Mesh - 245526 	<ul style="list-style-type: none"> • 60 Mesh - 245527 • 100 Mesh - 245528 • 200 Mesh - 245526 	<ul style="list-style-type: none"> • 30 Mesh- 244071 • 60 Mesh- 244067 • 100 Mesh- 244068 • 200 Mesh- 244069 	<ul style="list-style-type: none"> • 30 Mesh- 244071 • 60 Mesh- 244067 • 100 Mesh- 244068 • 200 Mesh- 244069
Dimensions:	<ul style="list-style-type: none"> • 14.9 L x 15.0 W x 15.6 H (in) 37.8 L x 38.1 W x 39.6 H (cm) 	<ul style="list-style-type: none"> • 19.5 L x 17.25 W x 40.75 H (in) 49.5 L x 43.8 W x 103.5 H (cm) 	<ul style="list-style-type: none"> • Cart - 22.0 L x 20.5 W x 38.8 H (in) 55.9 L x 52.1 W x 98.6 H (cm) • Stand - 15.75 L x 14.0 W x 17.0 H (in) 40.0 L x 36.0 W x 43.0 H (cm) 	<ul style="list-style-type: none"> • Cart - 22.0 L x 20.5 W x 38.8 H (in) 55.9 L x 52.1 W x 98.6 H (cm) 	<ul style="list-style-type: none"> • Cart - 26.5 L x 22.5 W x 38.75 H (in) 67.3 L x 57.2 W x 98.4 H (cm) 	<ul style="list-style-type: none"> • Cart - 26.5 L x 22.5 W x 38.75 H (in) 67.3 L x 57.2 W x 98.4 H (cm)
Repair Parts:	<ul style="list-style-type: none"> • Inlet Strainer - 245578 • Pump Repair Kit - 245078 	<ul style="list-style-type: none"> • Pump Repair Kit: 245569 	<ul style="list-style-type: none"> • Inlet Strainer - 276897 • Packing Kit - 244194 • Rod - 249125 • Cylinder - 243176 • Complete Pump Lower: • Part # 255475 	<ul style="list-style-type: none"> • Inlet Strainer - 276897 • Packing Kit - 244194 • Rod - 249125 • Cylinder - 243176 • Complete Pump Lower: • Part # 255475 	<ul style="list-style-type: none"> • Inlet Strainer - 189920 • Packing Kit- 248212 • Rod- 248206 • Sleeve- 248209 • Complete Pump Lower: • Part # 248204 	<ul style="list-style-type: none"> • Inlet Strainer - 189920 • Packing Kit- 248212 • Rod- 248206 • Sleeve- 248209 • Complete Pump Lower: • Part # 248204
Manuals:			<ul style="list-style-type: none"> • Operation - 312360 • Repair - 312361 • Pump - 312362 • Gun - 312363 	<ul style="list-style-type: none"> • Operation - 312360 • Repair - 312361 • Pump - 312362 • Gun - 312363 	<ul style="list-style-type: none"> • Operation- 312538 • Repair- 312537 • Pump- 310643 • Gun- 312363 	<ul style="list-style-type: none"> • Operation- 312538 • Repair- 312537 • Pump- 310643 • Gun- 312363
Warranty:	1 year warranty against defects, materials and workmanship; excluding wear parts.	1 year warranty against defects, materials and workmanship; excluding wear parts.	2 year warranty against defects, materials and workmanship; excluding wear parts.	2 year warranty against defects, materials and workmanship; excluding wear parts.	2 year warranty against defects, materials and workmanship; excluding wear parts.	2 year warranty against defects, materials and workmanship; excluding wear parts.

* 240V Units are not sold domestically

AIRLESS PRODUCT SPECIFICATIONS



Zip-Spray 3600 G Plus
247560
.036
3300/227
1.25/4.7
113 lbs
150/300 ft (45.7/91.4 m) depending on tip size
(1) Gun with .036 (2) Guns with .023 (3) Guns with .018
<ul style="list-style-type: none"> 500 Series Professional Airless Spray Gun with 2-finger trigger 517 Uni-Tip with Uni-Tip Hand-Tight Base Hose: 1/4 in x 50 ft (6.4 mm x 15 m) 3300 psi (227 bar) Pump Life Protectant Fluid
Includes Easy-Out Pump Filter
<ul style="list-style-type: none"> 30 Mesh - 246425 60 Mesh - 246384 100 Mesh - 246382 200 Mesh - 246383
<ul style="list-style-type: none"> Cart - 32 L x 22.25 W x 31.5 H (in) 81 L x 56.5 W x 80 H (cm)
<ul style="list-style-type: none"> Inlet Strainer - 189920 Packing Kit - 248212 Chromex Rod - 248206 Cylinder - 287551 Sleeve - 248209 Piston Valve - 239937 Intake Valve Kit - 246429 30/55 Gallon Siphon Kit - 287541 Complete Pump Lower: Part # 287512
<ul style="list-style-type: none"> Instruction - 312576 Repair - 312586
2 year warranty against defects, materials and workmanship; excluding wear parts.

Model	Zip-TEX 650	Zip-TEX 900
Part Number:	254982	254983
Max psi/bar:	50/3.5	60/4.2
Max gpm/lpm:	.65/2.5	.9/2.5
Weight lbs/kg:	25/11.3	60/27.2
Max Hose Length:	20 ft (6 m)	25 ft (6 m)
Motor:	1.0 HP	1.7 HP
Compressor Air Output:	<ul style="list-style-type: none"> User supplied air compressor required Minimum air compressor rating 3.5 cfm @ 40 psi (.09 m³/min) 	<ul style="list-style-type: none"> 8.7 Displacement cfm - (sm.ltrs) 4.0 cfm @ 45 psi (.1 m³/min)
Sprayer Includes:	<ul style="list-style-type: none"> Hopper: 5 gal Contractor Texture Gun Tips/Discs Supplied with Trigger Gun: 6 mm, 8 mm 20 ft material hose 	<ul style="list-style-type: none"> Hopper: 8 gal Contractor Texture Gun Tips/Discs Supplied with Trigger Gun: 4 mm, 6 mm, 8 mm, 12mm 3/4 gal Touch-up Hopper 25 ft Material/Air hose
Dimensions:	<ul style="list-style-type: none"> 12 W x 20 L x 20 H (in) 30 W x 51 L x 51 H (cm) 	<ul style="list-style-type: none"> 18 W x 23 L x 41 H (in) 46 W x 58 L x 100 H (cm)
Repair Parts:	<ul style="list-style-type: none"> Gun - 288906 20 ft Air/Material Hose - 288622 RotoFlex II Hose - 288623 	<ul style="list-style-type: none"> Gun - 288905 Gun/Hopper - 246409 25 ft Material/Air Hose - 234149 RotoFlex II Hose - 288623
Manuals:	<ul style="list-style-type: none"> Operation - 311766 Repair - 311774 	<ul style="list-style-type: none"> Operation - 311766 Repair - 311774
Materials Sprayed	Simulated acoustic and drywall mud	Simulated acoustic and drywall mud
Typical Applications	Residential and light commercial interiors	Residential and light commercial interiors
Warranty:	1 year warranty against defects, materials and workmanship; excluding wear parts.	1 year warranty against defects, materials and workmanship; excluding wear parts.

Model	Zip-Clean 2525 Direct-Drive	Zip-Clean 2730 Direct-Drive	Zip-Clean 3030 Direct-Drive
Part Number:	246602	245348	245349
Operating Pressure:	2500 psi (172 bar, 17.2 MPa)	2700 psi (186 bar, 18.6 MPa)	3000 psi (206 bar, 20.6 MPa)
Water Pump Flow Rate:	2.5 gpm (9.5 lpm)	2.7 gpm (10.2 lpm)	3.0 gpm (11 lpm)
Weight lbs/kg:	70 lb (32 kg)	99 lb (45 kg)	135 lb (61 kg)
Fuel Tank Capacity:	1.8 qt (1.8 liter)	3.8 qt (3.6 liter)	6.2 qt (6.1 liter)
Motor:	(4 cycle, air-cooled): 160cc Honda GC Series	(4 cycle, air-cooled): 200cc Honda OHV	(4 cycle, air-cooled): 270cc Honda OHV
Pump Type:	Radial Axial Pump	General Pump, Triplex Piston Ceramic Plunger	General Pump, Triplex Piston Ceramic Plunger
Tips:	<ul style="list-style-type: none"> 0° Red - 805535 15° Yellow - 805536 25° Green - 805537 40° White - 805538 Black Chemical Injector - 805634 Set of 4 Tips (0°, 15°, 25°, 40°) - 244768 	<ul style="list-style-type: none"> 0° Red - 805535 15° Yellow - 805536 25° Green - 805537 40° White - 805538 Black Chemical Injector - 805634 Set of 4 Tips (0°, 15°, 25°, 40°) - 244768 	<ul style="list-style-type: none"> 0° Red - 805539 15° Yellow - 805540 25° Green - 805541 40° White - 805542 Black Chemical Injector - 805634 Set of 4 Tips (0°, 15°, 25°, 40°) - 244769
Dimensions:	<ul style="list-style-type: none"> 22 W x 23.5 L x 34 H (in) 56 W x 60 L x 86 H (cm) 	<ul style="list-style-type: none"> 21.5 W x 35.5 L x 34 H (in) 55 W x 90 L x 86 H (cm) 	<ul style="list-style-type: none"> 21.5 W x 35.5 L x 34 H (in) 55 W x 90 L x 86 H (cm)
Replacement Parts:	<ul style="list-style-type: none"> Gun only - 246674 Wand Extension - 118124 Hose - 118125 	<ul style="list-style-type: none"> Gun - 288905 Gun/Hopper - 246409 25 ft Material/Air Hose - 234149 RotoFlex II Hose - 288623 	<ul style="list-style-type: none"> Gun & Wand - 244784 Hose - 245416
Manuals:	Instruction - 309829	Instruction - 309424 Repair - 309425	Instruction - 309424 Repair - 309425
Warranty:	1 year warranty against defects, materials and workmanship; excluding wear parts.	2 year warranty against defects, materials and workmanship; excluding wear parts.	2 year warranty against defects, materials and workmanship; excluding wear parts.

ASM CUSTOMER SERVICE

20500 David Koch Ave.
Rogers, MN 55374
Phone: 800-854-4025
Fax: 800-228-5104

**VISIT US ON THE WEB FOR PROMOTIONS,
PRODUCT UPDATES, MANUALS, DEALERS,
SERVICE CENTERS AND GENERAL
INFORMATION**

WARRANTY

ASM warrants its products to be free of defects in material and workmanship for one year (See operation manual for complete warranty information)

ASM AUTHORIZED SERVICE AGENCIES

Call 1-800-854-4025 or see our website for the nearest ASM Authorized Service Agency.

www.asmcompany.com



A DIVISION OF GRACO®